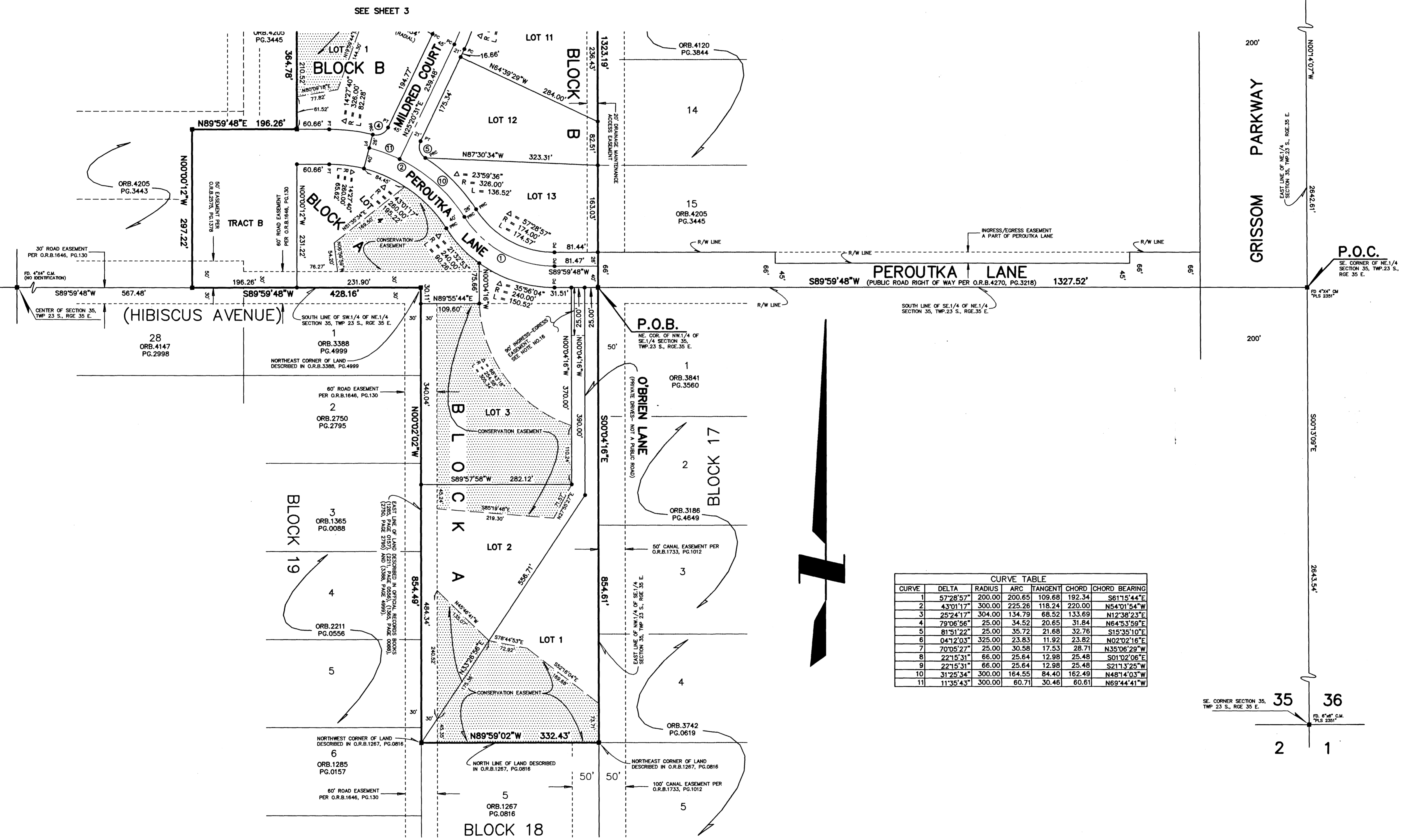
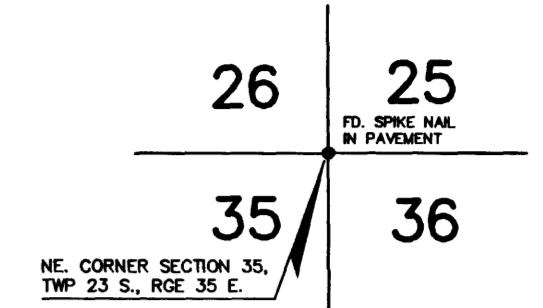
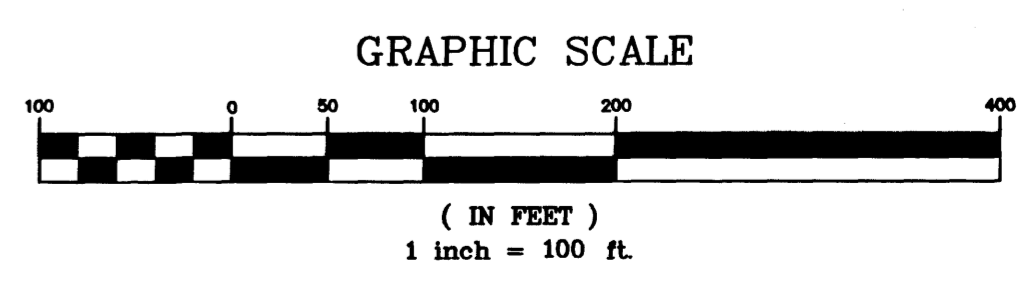
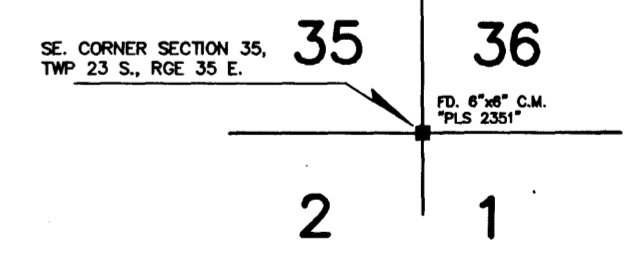


VERONICA ESTATES PHASE ONE

A SUBDIVISION OF A PART OF THE EAST 1/2 OF SECTION 35,
TOWNSHIP 23 SOUTH, RANGE 35 EAST BREVARD COUNTY, FLORIDA.



CURVE TABLE						
CURVE	DELTA	RADIUS	ARC TANGENT	CHORD	CHORD BEARING	
1	57°28'57"	200.00	200.65	109.68	S61°15'44"E	
2	43°01'17"	300.00	225.26	118.24	N54°01'54"W	
3	25°24'17"	304.00	134.79	68.52	N12°38'23"E	
4	79°06'56"	25.00	34.52	20.65	N64°53'59"E	
5	81°51'22"	25.00	35.72	21.68	S15°35'10"E	
6	04°12'03"	325.00	23.83	11.92	N02°02'16"E	
7	70°05'27"	25.00	30.58	17.53	N35°06'29"W	
8	22°15'31"	66.00	25.64	12.98	S01°02'06"E	
9	22°15'31"	66.00	25.64	12.98	S21°13'25"W	
10	31°25'34"	300.00	164.55	84.40	N48°14'03"W	
11	11°35'43"	300.00	60.71	30.46	N69°44'41"W	



PREPARED BY:
Honeycutt & Associates, Inc.
ENGINEERS-SURVEYORS-PLANNERS
5195 South Washington Avenue • Titusville, FL 32780
(407) 267-6233 Fax (407) 269-7847
CERTIFICATE OF AUTHORIZATION NO. LB 6762