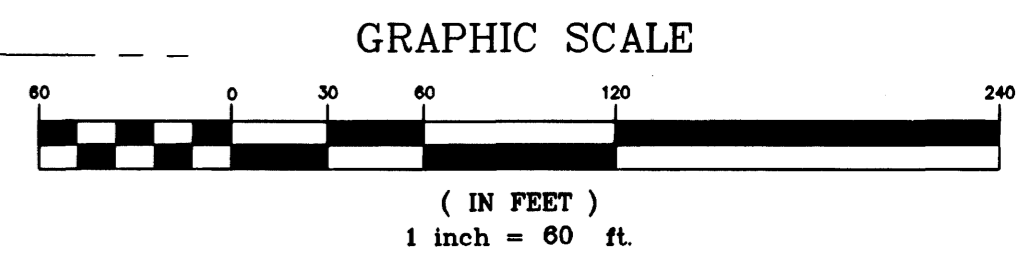
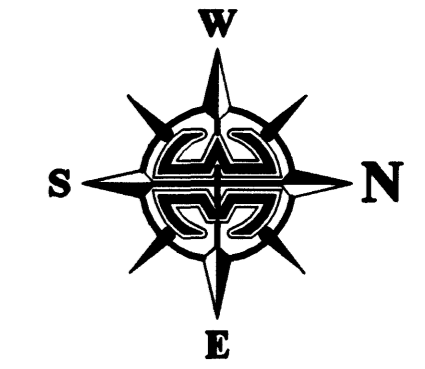


STRATFORD POINTE PHASE TWO

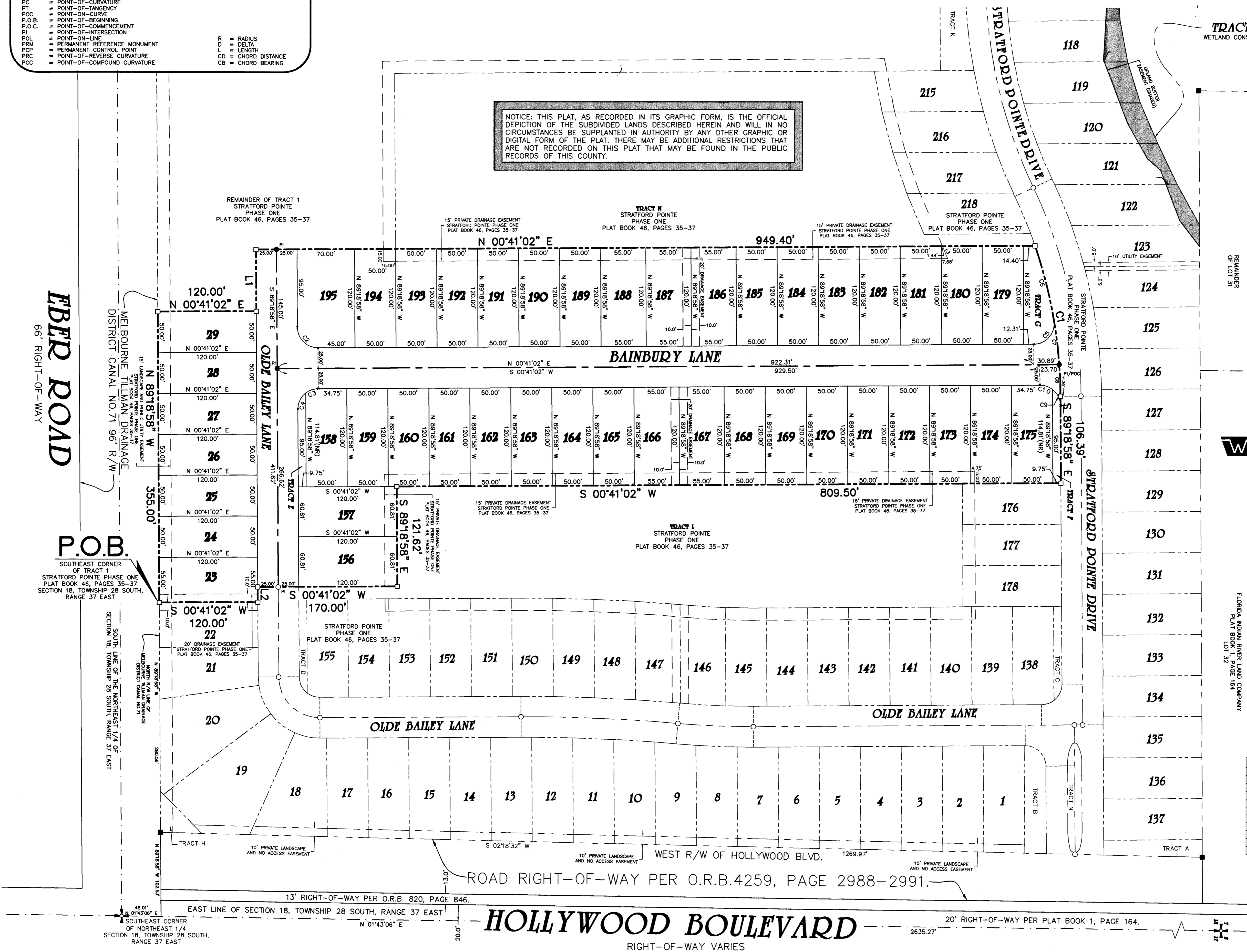
A REPLAT OF A PORTION OF TRACT 1, STRATFORD POINTE PHASE ONE, (PLAT BOOK 46, PAGES 35-37)
SECTION 18, TOWNSHIP 28 SOUTH, RANGE 37 EAST
CITY OF WEST MELBOURNE, COUNTY OF BREVARD, FLORIDA.

PLAT BOOK 46 PAGE 82
SHEET 2 OF 2
SECTION 18 TWP. 28 S., RANGE 37 E.

- LEGEND:**
- 4"x4" CONCRETE MONUMENT WITH NAIL AND DISK MARKED "PRM PLS 5060" (SET)
 - 4"x4" CONCRETE MONUMENT WITH NAIL AND DISK MARKED "PRM PLS 5060" (FOUND)
 - NAIL AND DISK MARKED "PCP PLS 5060" (SET)
 - NAIL AND DISK MARKED "PCP PLS 5060" (FOUND)
 - CURVE NUMBER FOR CURVE TABLE
 - LINE NUMBER FOR LINE TABLE
 - ESMT. = EASEMENT
 - P.U.&D.E. = PUBLIC UTILITIES AND DRAINAGE EASEMENT
 - R/W = RIGHT-OF-WAY
 - (R) = RADIAL
 - (NR) = NON-RADIAL
 - P.B. = PLAT BOOK
 - P.C. = PAGE
 - P.C. = POINT-OF-CURVATURE
 - P.T. = POINT-OF-TANGENCY
 - P.O.C. = POINT-ON-CURVE
 - P.O.B. = POINT-OF-BEGINNING
 - P.O.C. = POINT-OF-COMMENCEMENT
 - P.I. = POINT-OF-INTERSECTION
 - POL = POINT-ON-LINE
 - PRM = PERMANENT REFERENCE MONUMENT
 - PCP = PERMANENT CONTROL POINT
 - PRC = POINT-OF-REVERSE CURVATURE
 - PCC = POINT-OF-COMPOUND CURVATURE
- R = RADIUS
D = DELTA
L = LENGTH
CD = CHORD DISTANCE
CB = CHORD BEARING



NOTICE: THIS PLAT, AS RECORDED IN ITS GRAPHIC FORM, IS THE OFFICIAL DEPICTION OF THE SUBDIVIDED LANDS DESCRIBED HEREIN AND WILL IN NO CIRCUMSTANCES BE SUPPLANTED IN AUTHORITY BY ANY OTHER GRAPHIC OR DIGITAL FORM OF THE PLAT. THERE MAY BE ADDITIONAL RESTRICTIONS THAT ARE NOT RECORDED ON THIS PLAT THAT MAY BE FOUND IN THE PUBLIC RECORDS OF THIS COUNTY.



PREPARED BY:
WILLIAM MOTT LAND SURVEYING INC.
SATELLITE BEACH PROFESSIONAL CENTER
1275 SOUTH PATRICK DRIVE, SUITE H
SATELLITE BEACH, FLORIDA, 32937-3955
PHONE (321) 773-4323
PROJECT NUMBER: 2010066
DRAWING NAME: STRATFORD-PH2.DWG
DRAWN BY: DANIEL D. GARNER P.S.M. 6189

LINE TABLE

| LINE | LENGTH | BEARING |
|------|--------|---------------|
| L1 | 75.28' | N 89°18'58" W |
| L2 | 18.66' | S 89°18'58" E |
| L3 | 16.25' | N 68°05'08" E |

CURVE TABLE

| CURVE | RADIUS | DELTA | LENGTH | CHORD | CHORD BEARING |
|-------|---------|-----------|---------|---------|---------------|
| C1 | 575.00' | 18°37'19" | 186.88' | 186.06' | S 81°22'23" W |
| C2 | 25.00' | 90°00'00" | 39.27' | 35.36' | N 45°41'02" E |
| C3 | 25.00' | 37°35'22" | 16.40' | 16.11' | S 89°08'39" E |
| C4 | 25.00' | 52°24'38" | 22.87' | 22.08' | S 63°06'39" E |
| C5 | 25.00' | 99°16'17" | 43.32' | 38.10' | N 48°57'06" W |
| C6 | 575.00' | 9°21'02" | 93.84' | 93.74' | S 76°44'14" W |
| C7 | 575.00' | 5°25'16" | 54.40' | 54.38' | S 84°07'23" W |
| C8 | 575.00' | 3°51'01" | 38.64' | 38.63' | S 88°45'32" W |
| C9 | 25.00' | 52°24'38" | 22.87' | 22.08' | S 64°28'43" W |
| C10 | 25.00' | 37°35'22" | 16.40' | 16.11' | S 19°28'43" W |

HOLLYWOOD BOULEVARD
RIGHT-OF-WAY VARIES