

5/16/01

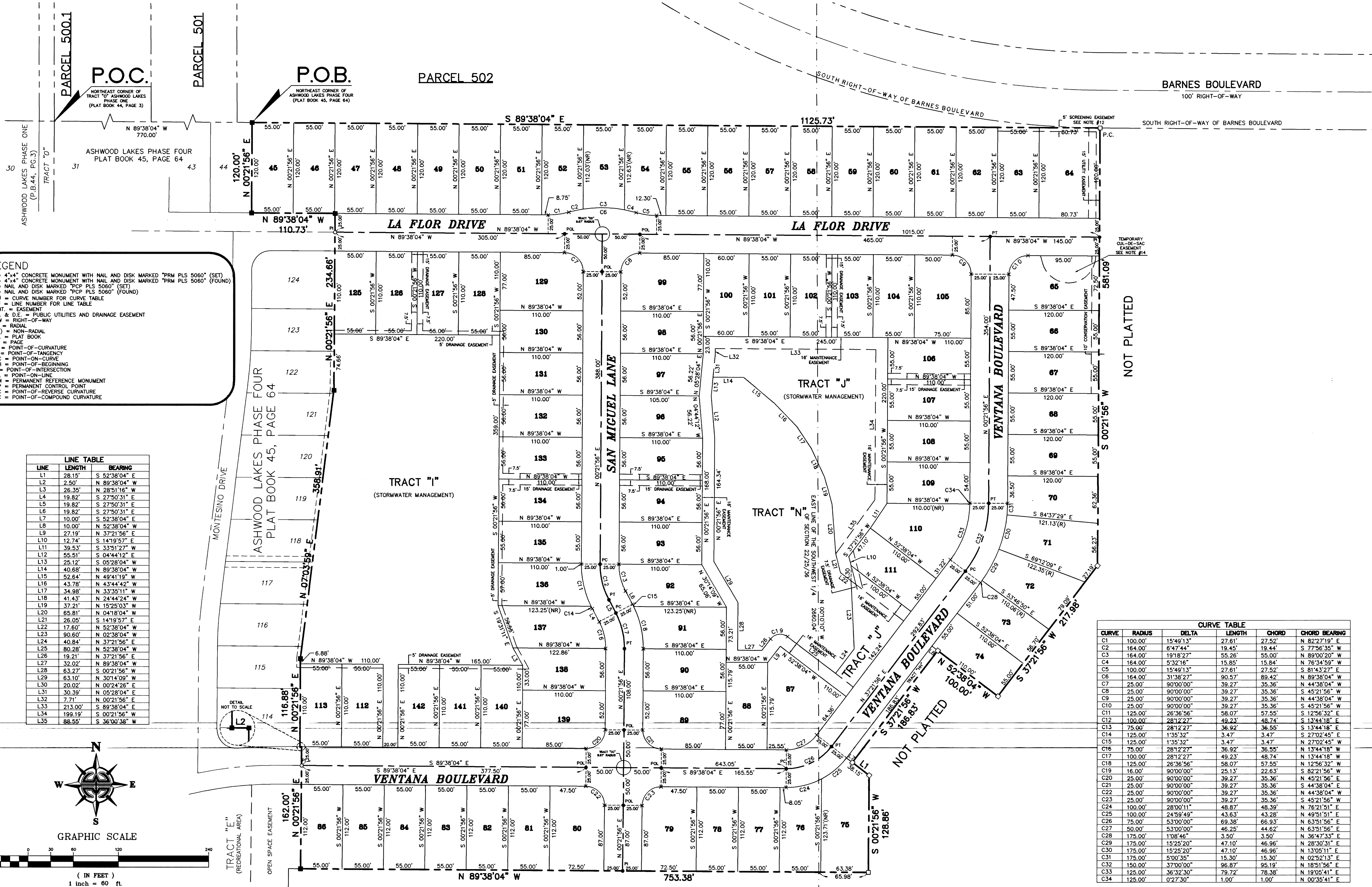
WILLIAM MOTT LAND SURVEYING INC.

PREPARED BY: WILLIAM MOTT LAND SURVEYING INC. SATELLITE BEACH PROFESSIONAL CENTER 1275 SOUTH PATRICK DRIVE, SUITE H SATELLITE BEACH, FLORIDA, 32937-3955 PHONE (321) 773-4323 PROJECT NUMBER: 2000979 DRAWN BY: DANIEL D. GARNER

# ASHWOOD LAKES PHASE FIVE

SECTION 22, TOWNSHIP 25 SOUTH, RANGE 36 EAST CITY OF ROCKLEDGE, COUNTY OF BREVARD, FLORIDA

NOTICE: THIS PLAT, AS RECORDED IN ITS GRAPHIC FORM, IS THE OFFICIAL DESCRIPTION OF THE SUBDIVIDED LANDS DESCRIBED HEREIN AND WILL IN NO CIRCUMSTANCES BE SUPPLANTED IN AUTHORITY BY ANY OTHER GRAPHIC OR DIGITAL FORM OF THE PLAT. THERE MAY BE ADDITIONAL RESTRICTIONS THAT ARE NOT RECORDED ON THIS PLAT THAT MAY BE FOUND IN THE PUBLIC RECORDS OF THIS COUNTY.



**LEGEND**

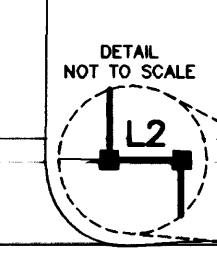
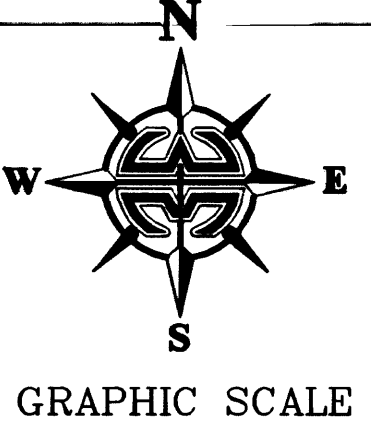
- = 4"x4" CONCRETE MONUMENT WITH NAIL AND DISK MARKED "PRM PLS 5060" (SET)
- = 4"x4" CONCRETE MONUMENT WITH NAIL AND DISK MARKED "PRM PLS 5060" (FOUND)
- = NAIL AND DISK MARKED "PCP PLS 5060" (SET)
- = NAIL AND DISK MARKED "PCP PLS 5060" (FOUND)
- C# = CURVE NUMBER FOR CURVE TABLE
- L# = LINE NUMBER FOR LINE TABLE
- ESMT. = EASEMENT
- P.U. & D.E. = PUBLIC UTILITIES AND DRAINAGE EASEMENT
- R/W = RIGHT-OF-WAY
- (R) = RADIAL
- (NR) = NON-RADIAL
- P.B. = PLAT BOOK
- PC = PAGE
- PC = POINT-OF-CURVATURE
- PT = POINT-OF-TANGENCY
- POC = POINT-ON-CURVE
- POB = POINT-OF-BEGINNING
- PI = POINT-OF-INTERSECTION
- POL = POINT-ON-LINE
- PRM = PERMANENT REFERENCE MONUMENT
- PCP = PERMANENT CONTROL POINT
- PRC = POINT-OF-REVERSE CURVATURE
- PSC = POINT-OF-COMPOUND CURVATURE

**LINE TABLE**

LINE	LENGTH	BEARING
L1	28.15'	S 52°38'04" E
L2	2.50'	N 89°38'04" W
L3	26.35'	N 28°51'16" W
L4	19.82'	S 27°50'31" E
L5	19.82'	S 27°50'31" E
L6	19.82'	S 27°50'31" E
L7	10.00'	S 52°38'04" E
L8	10.00'	N 52°38'04" W
L9	27.19'	N 37°21'56" E
L10	12.74'	S 14°19'57" E
L11	39.53'	S 33°51'27" W
L12	55.51'	S 04°44'12" E
L13	25.12'	S 05°28'04" W
L14	40.68'	N 89°38'04" W
L15	52.64'	N 49°41'19" W
L16	43.78'	N 43°44'42" W
L17	34.98'	N 33°35'11" W
L18	41.43'	N 24°44'24" W
L19	37.21'	N 15°25'03" W
L20	65.81'	N 04°18'04" W
L21	26.05'	S 14°19'57" E
L22	17.60'	N 52°38'04" W
L23	90.80'	N 02°38'04" W
L24	40.84'	N 37°21'56" E
L25	80.28'	N 52°38'04" W
L26	19.21'	N 37°21'56" E
L27	32.02'	N 89°38'04" W
L28	63.27'	S 00°21'56" W
L29	63.10'	N 30°14'09" W
L30	20.02'	N 00°24'26" E
L31	30.39'	N 05°28'04" E
L32	7.71'	N 00°21'56" E
L33	213.00'	S 89°38'04" E
L34	199.19'	S 00°21'56" E
L35	88.55'	S 36°00'38" W

**CURVE TABLE**

CURVE	RADIUS	DELTA	LENGTH	CHORD	CHORD BEARING
C1	100.00'	15°49'13"	27.61'	27.52'	N 82°27'19" E
C2	164.00'	6°47'44"	19.45'	19.44'	S 77°56'35" W
C3	164.00'	19°18'27"	55.26'	55.00'	N 89°00'20" W
C4	164.00'	5°32'16"	15.85'	15.84'	N 76°34'59" W
C5	100.00'	15°49'13"	27.61'	27.52'	S 81°43'27" E
C6	164.00'	31°38'27"	90.57'	89.42'	N 89°38'04" W
C7	25.00'	90°00'00"	39.27'	35.36'	N 44°38'04" W
C8	25.00'	90°00'00"	39.27'	35.36'	S 45°21'56" W
C9	25.00'	90°00'00"	39.27'	35.36'	N 44°38'04" W
C10	25.00'	90°00'00"	39.27'	35.36'	S 45°21'56" W
C11	125.00'	26°36'56"	58.07'	57.55'	S 12°56'32" E
C12	100.00'	28°12'27"	49.23'	48.74'	S 13°44'18" E
C13	75.00'	28°12'27"	36.92'	36.53'	S 13°44'18" E
C14	125.00'	1°35'32"	3.47'	3.47'	S 27°02'45" E
C15	125.00'	1°35'32"	3.47'	3.47'	S 27°02'45" E
C16	75.00'	28°12'27"	36.92'	36.53'	N 13°44'18" W
C17	100.00'	28°12'27"	49.23'	48.74'	N 13°44'18" W
C18	125.00'	26°36'56"	58.07'	57.55'	N 12°56'32" W
C19	16.00'	90°00'00"	25.13'	22.63'	S 82°21'56" W
C20	25.00'	90°00'00"	39.27'	35.36'	N 45°21'56" E
C21	25.00'	90°00'00"	39.27'	35.36'	S 44°38'04" E
C22	25.00'	90°00'00"	39.27'	35.36'	N 44°38'04" W
C23	25.00'	90°00'00"	39.27'	35.36'	S 45°21'56" W
C24	100.00'	28°00'11"	48.87'	48.39'	N 78°21'51" E
C25	100.00'	24°59'49"	43.63'	43.28'	N 49°51'51" E
C26	75.00'	53°00'00"	69.38'	66.83'	N 63°51'56" E
C27	50.00'	53°00'00"	46.25'	44.62'	N 63°51'56" E
C28	175.00'	1°08'46"	3.50'	3.50'	N 36°47'33" E
C29	175.00'	15°25'20"	47.10'	46.96'	N 28°30'31" E
C30	175.00'	15°25'20"	47.10'	46.96'	N 13°05'11" E
C31	175.00'	5°00'35"	15.30'	15.30'	N 02°52'13" E
C32	150.00'	37°00'00"	96.87'	95.19'	N 18°51'56" E
C33	125.00'	36°32'30"	79.72'	78.38'	N 19°05'41" E
C34	125.00'	0°27'30"	1.00'	1.00'	N 00°35'41" E



TRACT "E" (RECREATIONAL AREA)

TEMPORARY CUL-DE-SAC EASEMENT SEE NOTE #14

NOT PLATTED

NOT PLATTED

NOT PLATTED