

# BEL VISTA

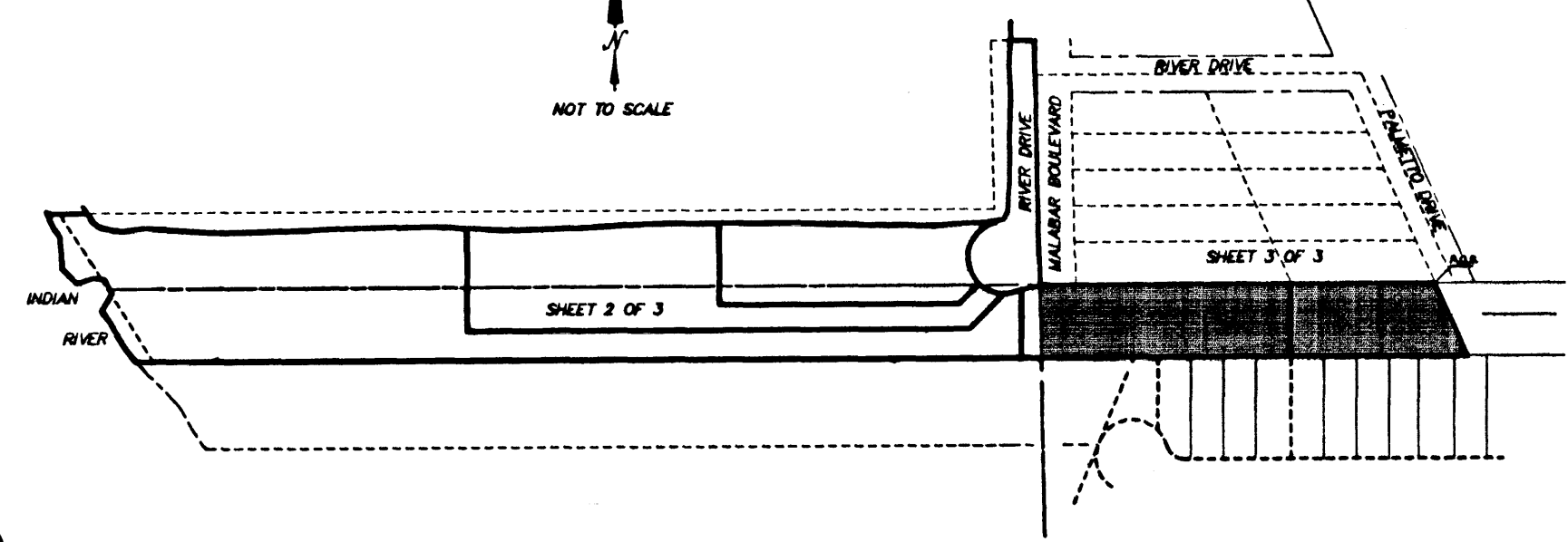
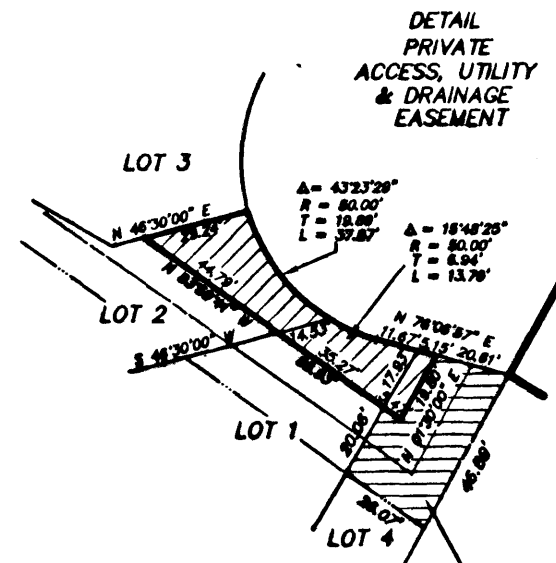
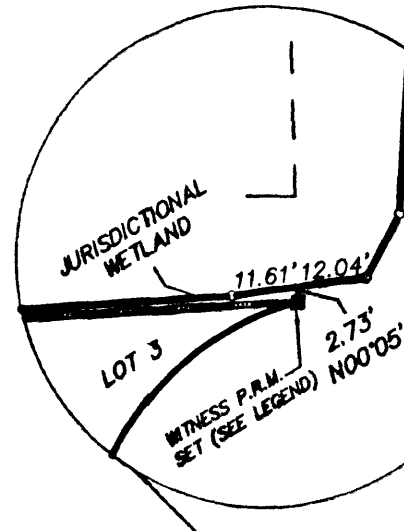
## A SUBDIVISION LYING IN SECTION 10, TOWNSHIP 29 SOUTH, RANGE 38 EAST

### BREVARD COUNTY, FLORIDA.

KEY MAP

NOT TO SCALE

NORTH LINE GOVERNMENT LOT 2  
SECTION 10, TOWNSHIP 29 SOUTH, RANGE 38 EAST



CURVE	RADIUS	LENGTH	TANGENT	CHORD	BEARING	DELTA
C1	50.00'	13.79'	13.75'	13.75'	N 88°17'21" E	152°29'21"
C2	50.00'	105.32'	82.05'	89.20'	S 14°52'54" W	191°29'21"
C4	50.00'	137.58'	N/A	100.00'	S 13°32'58" E	162°34'07"

LINE	DIRECTION	DISTANCE
L1	S 00°05'43" W	351.60'
L2	N 83°59'41" W	722.37'
L3	N 2°02'56" W	104.62'
L4	S 88°17'21" W	100.86'
L5	S 80°24'58" E	102.22'
L6	N 80°39'00" E	102.25'
L7	S 89°02'50" E	98.65'
L8	N 83°44'18" W	100.74'
L9	S 81°39'48" E	100.11'
L10	N 86°50'00" W	101.05'
L11	N 88°00'00" E	89.63'
L12	N 81°10'50" W	101.22'
L13	S 87°22'18" W	73.63'
L14	S 01°32'24" W	38.99'
L15	S 81°44'11" E	33.29'
L16	S 81°47'59" E	45.95'
L17	S 81°16'11" W	39.58'
L18	N 83°19'41" W	134.83'
L19	N 4°02'58" W	103.78'
L20	S 88°17'21" W	100.39'
L21	N 80°24'58" W	101.72'
L22	S 80°39'00" W	101.44'
L23	N 89°02'50" W	89.85'
L24	N 85°44'18" W	101.40'
L25	N 87°52'54" W	102.01'
L26	N 86°50'00" W	100.15'
L27	S 88°00'00" W	100.15'
L28	N 81°10'50" W	114.50'
L29	S 82°52'18" W	75.75'
L30	S 14°57'10" W	10.46'
L31	N 14°57'10" E	10.46'
L32	S 88°30'00" E	81.03'
L33	S 88°30'00" E	81.03'
L34	S 30°54'03" E	242.65'
L35	N 89°30'00" W	175.59'
L36	S 14°57'10" W	20.31'

THE NORTH LINE OF O.R.B. 4077/PAGE 1501

MATCH LINE SEE SHEET 3 OF 3

MEAN WATER LINE 0.50 N.G.V.D. 1929 AS LOCATED 1/23/2000

SEE SHEET 2 OF 3

MATCH LINE SEE SHEET 3 OF 3

UNPLATTED

UNPLATTED

UNPLATTED

UNPLATTED

UNPLATTED

UNPLATTED

UNPLATTED

UNPLATTED

UNPLATTED

UNPLATTED

UNPLATTED

UNPLATTED

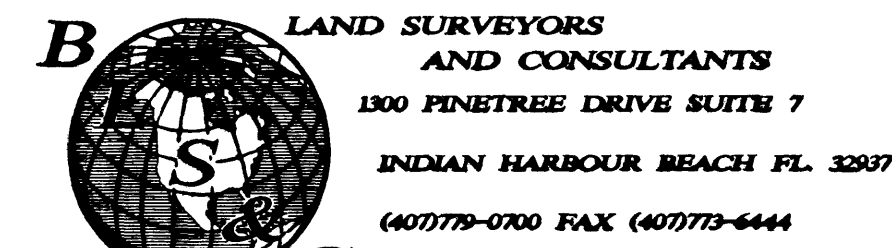
UNPLATTED

UNPLATTED

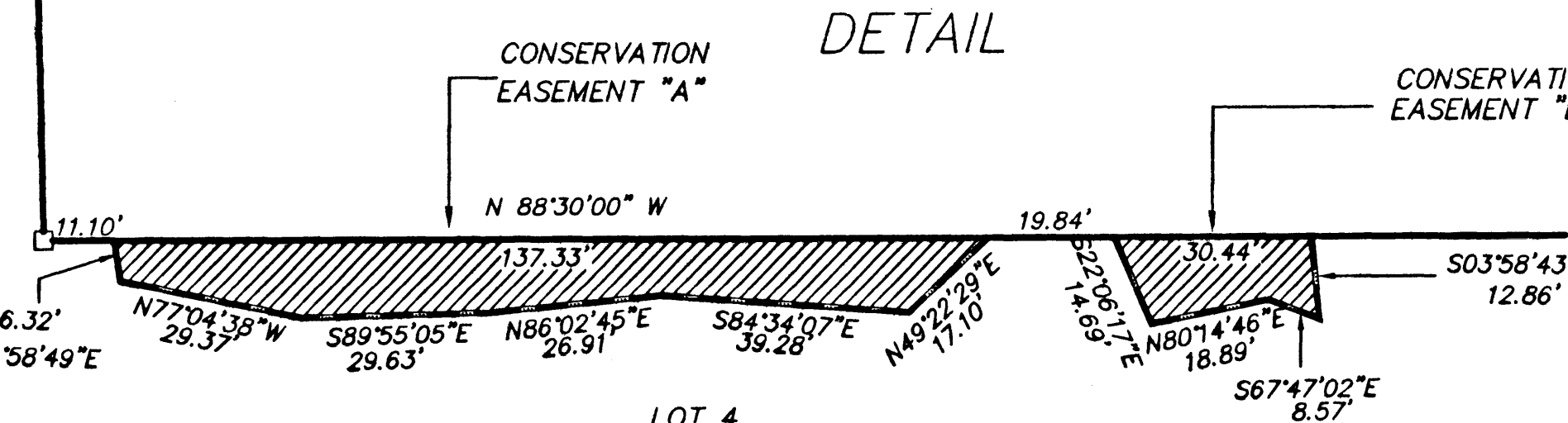
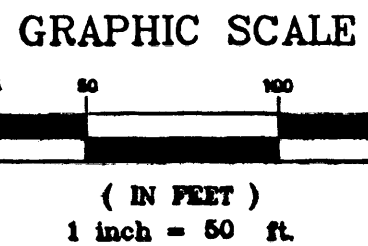
UNPLATTED

UNPLATTED

**PLAT PREPARED BY**  
 THIS INSTRUMENT WAS PREPARED BY RICHARD A. PUTZ P.S.M. NO. 4505 ON NOVEMBER 15, 1999



LAND SURVEYING / LAND PLATTING



The bearing structure shown hereon is referenced to the North line of government lot 2 which bears South 88°30'00" East and being assumed meridian.

- This Plat reflects a survey performed on 1/23/2000
- = Permanent Reference Monument Set 4"x4" concrete marked (P.R.M. 4505)
  - = Witness Permanent Reference Monument set 4"x4" concrete marked (P.R.M. 4505 witness.)
  - = Permanent Control Point, Set Marked P.C.P. #4505 (5/8" iron rod with cap.)
  - = Witness corner set (PSM #4505) 5/8" iron rod.
  - = Lot corner set (PSM #4505) 5/8" iron rod
  - N.R. = NON RADIAL
  - P.O.B. = Point of Beginning
  - P.O.C. = Point of Commencement
  - G/L = Government Lot
  - R = Radius
  - L = Arc Length
  - C = Chord Length
  - C.B. = Chord Bearing
  - Δ = Delta Angle
  - D & U ESMT = Drainage and utility easement
  - O.R.B. = Official Records Book
  - F.P. & L. = Florida Power and Light
  - O.A. = OVER ALL

NOTICE: THIS PLAT, AS RECORDED IN ITS GRAPHIC FORM, IS THE OFFICIAL DEPICTION OF THE SUBDIVIDED LANDS DESCRIBED HEREIN AND WILL IN NO CIRCUMSTANCES BE SUPPLANTED IN AUTHORITY BY ANY OTHER GRAPHIC OR DIGITAL FORM OF THE PLAT. THERE MAY BE ADDITIONAL RESTRICTIONS THAT ARE NOT RECORDED ON THIS PLAT THAT MAY BE FOUND IN THE PUBLIC RECORDS OF THIS COUNTY.