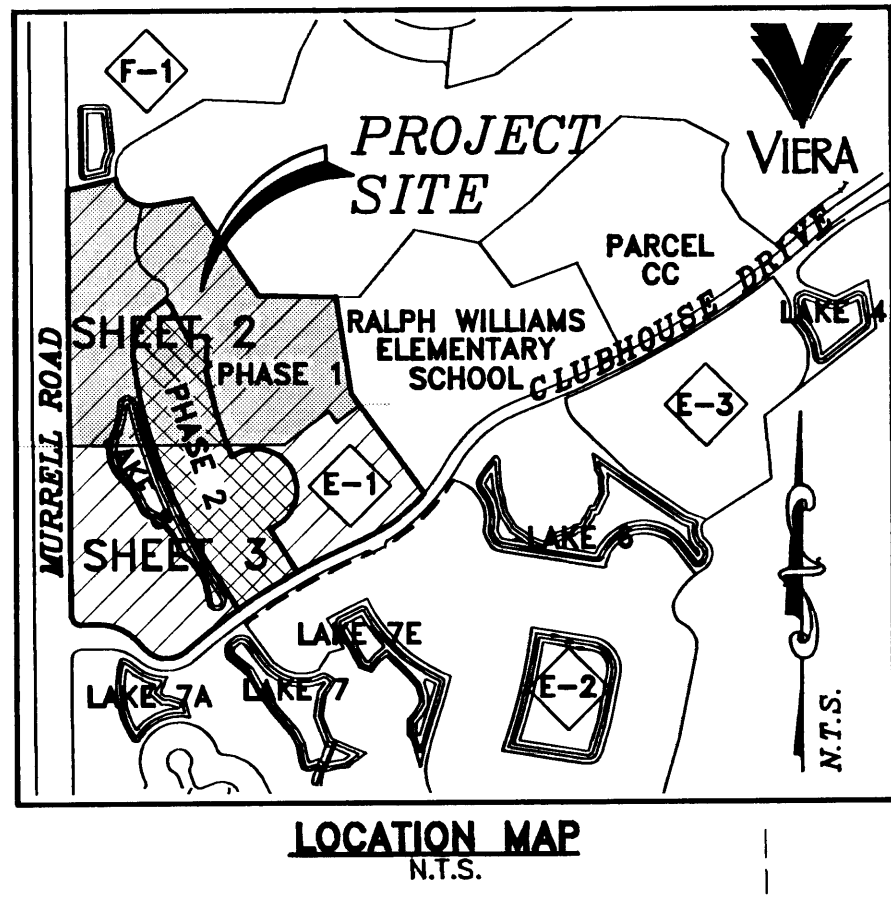


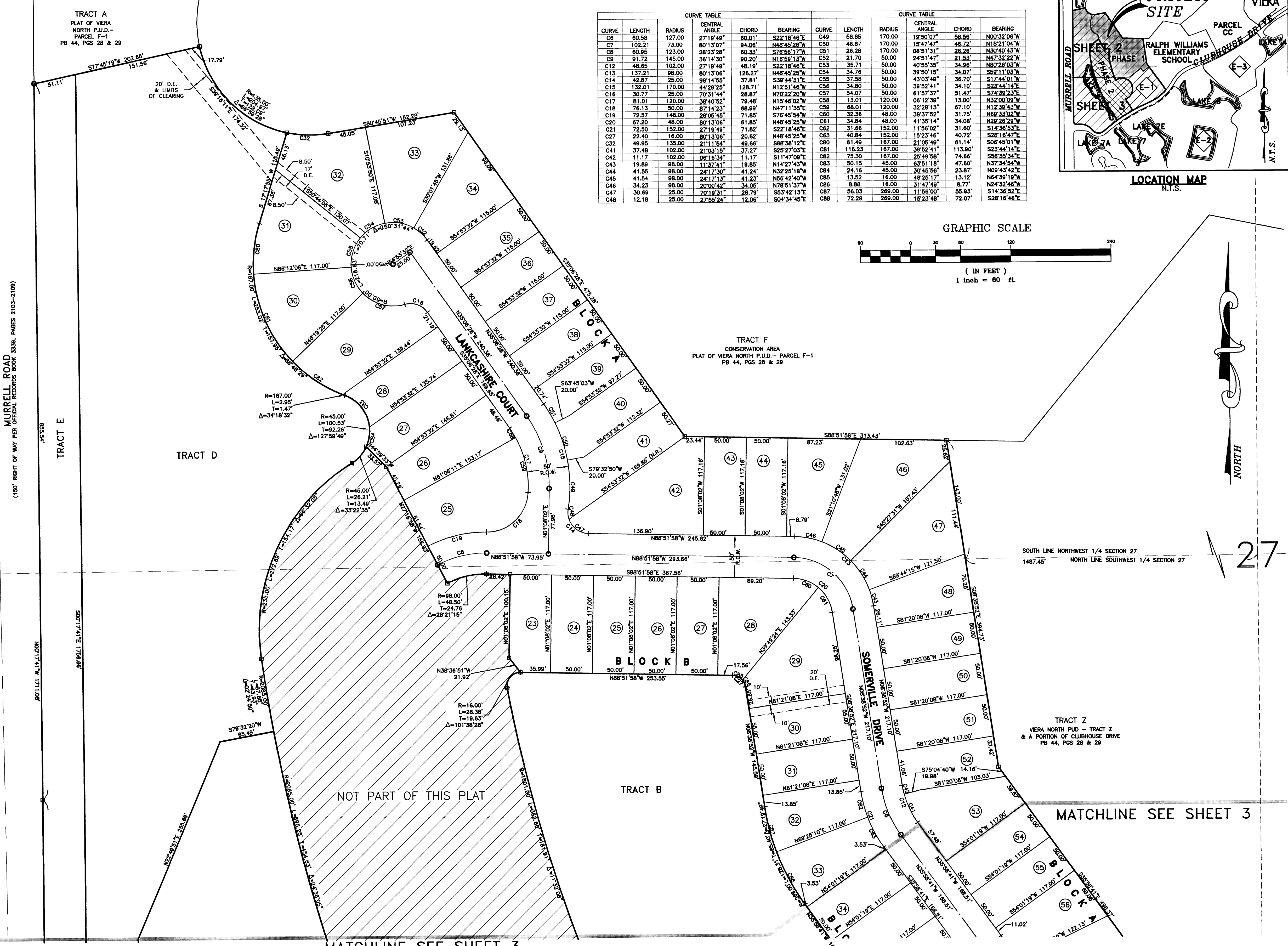
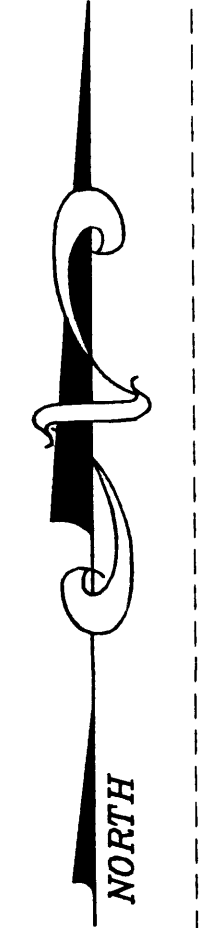
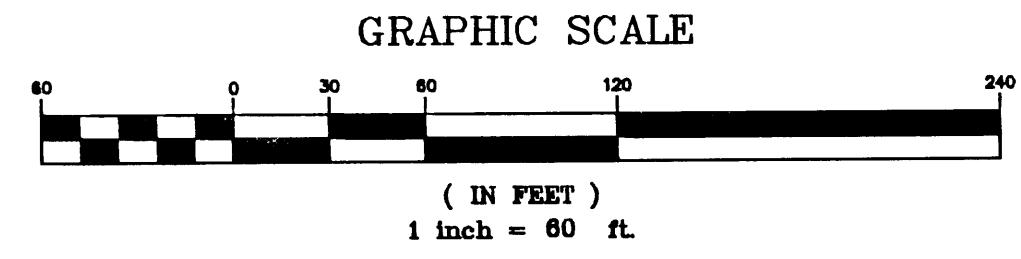
5/15/01

SOMERVILLE SUBDIVISION - PHASE ONE VIERA NORTH P.U.D. - PARCEL E-1 SECTION 27, TOWNSHIP 25 SOUTH, RANGE 36 EAST VIERA, BREVARD COUNTY, FLORIDA

PLAT BOOK 46, PAGE 46
SHEET 2 OF 3
SECTION 27, TWP. 25., RANGE 36 E.



CURVE TABLE					CURVE TABLE				
CURVE	LENGTH	RADIUS	CENTRAL ANGLE	CHORD BEARING	CURVE	LENGTH	RADIUS	CENTRAL ANGLE	CHORD BEARING
C6	60.58	127.00	27°19'49"	S22°18'46"E	C49	58.85	170.00	19°50'07"	S88°51'58"W
C7	102.21	73.00	80°13'07"	N48°45'28"W	C50	46.87	170.00	15°47'47"	N00°32'06"W
C8	60.95	123.00	28°23'28"	S76°56'17"W	C51	26.28	170.00	08°51'31"	N18°21'04"W
C9	91.72	145.00	36°14'30"	N16°59'13"W	C52	21.70	50.00	24°51'47"	N30°40'43"W
C10	48.65	102.00	27°19'49"	S22°18'46"E	C53	35.71	50.00	40°55'35"	N47°32'22"W
C11	137.21	98.00	80°13'06"	N48°45'28"W	C54	34.76	50.00	39°50'15"	N80°26'03"W
C12	42.87	25.00	98°14'55"	S39°44'31"E	C55	37.58	50.00	43°03'49"	S59°11'03"W
C13	132.01	170.00	44°28'25"	N12°51'46"W	C56	34.80	50.00	39°52'41"	S17°44'01"W
C14	30.77	25.00	70°31'44"	S28°8'7"E	C57	54.07	50.00	61°57'37"	S23°44'14"E
C15	81.01	120.00	38°40'52"	N15°46'02"W	C58	13.01	120.00	06°12'39"	N32°00'09"W
C16	76.13	50.00	87°14'23"	S68°99'48"W	C59	68.01	120.00	32°28'13"	N12°39'43"W
C17	72.57	148.00	28°05'45"	S76°45'54"W	C60	32.36	48.00	38°37'52"	N69°33'02"W
C18	67.20	48.00	80°13'06"	N48°45'28"W	C61	34.84	48.00	41°35'14"	N29°26'29"W
C19	72.50	152.00	27°19'49"	S22°18'46"E	C62	31.66	152.00	11°56'02"	S14°36'53"E
C20	22.40	16.00	80°13'06"	N48°45'28"W	C63	40.84	152.00	15°23'46"	S28°18'47"E
C21	49.95	135.00	21°11'54"	S88°38'12"E	C64	61.49	167.00	21°05'49"	S06°45'01"W
C22	37.48	102.00	21°03'15"	S29°27'03"E	C65	116.23	167.00	39°52'41"	S23°44'14"E
C23	11.17	102.00	06°18'34"	S11°47'09"E	C66	75.30	167.00	25°49'58"	S56°35'34"E
C24	19.89	98.00	11°37'41"	N14°27'43"W	C67	50.15	45.00	63°51'18"	N37°34'54"W
C25	41.55	98.00	24°17'30"	N32°25'18"W	C68	24.16	45.00	30°45'56"	N09°43'42"E
C26	41.54	98.00	24°17'31"	N32°25'18"W	C69	13.52	16.00	48°25'17"	N64°39'19"W
C27	34.23	98.00	20°00'42"	N78°51'37"W	C70	8.88	16.00	31°47'48"	N24°32'46"W
C28	30.69	25.00	70°19'31"	S53°42'13"E	C71	56.03	269.00	11°56'00"	S14°36'52"E
C29	12.18	25.00	27°55'24"	S04°34'46"E	C72	72.29	269.00	15°23'48"	S28°16'46"E



MATCHLINE SEE SHEET 3

MATCHLINE SEE SHEET 3

THIS PLAT PREPARED BY
B.S.E. CONSULTANTS, INC.
CONSULTING, ENGINEERING, LAND SURVEYING
312 S. Harbor City Blvd., Suite 4, Melbourne, Florida (321) 725-3674