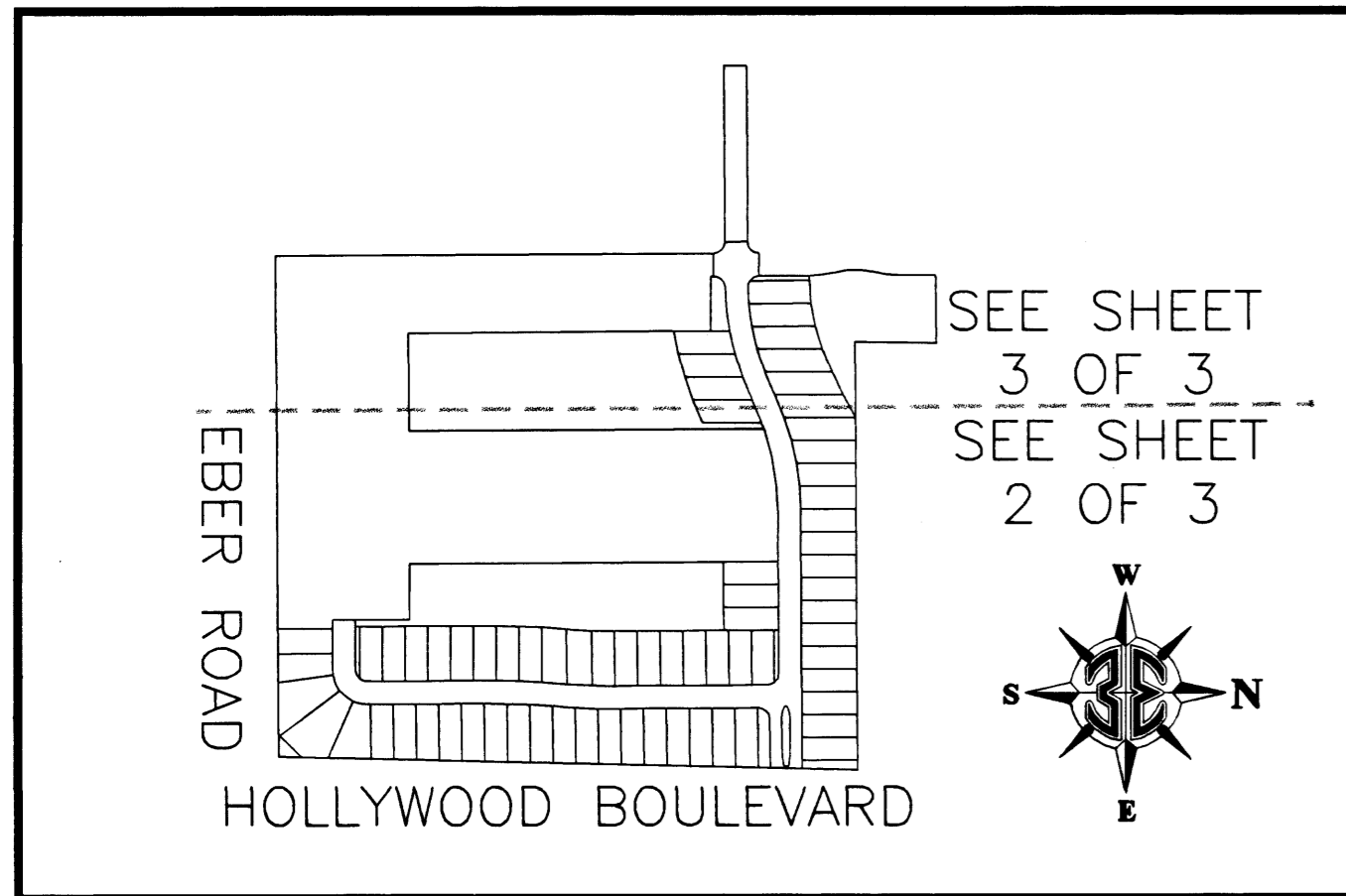


STRATFORD POINTE PHASE ONE

SECTION 18, TOWNSHIP 28 SOUTH, RANGE 37 EAST CITY OF WEST MELBOURNE, COUNTY OF BREVARD, FLORIDA.

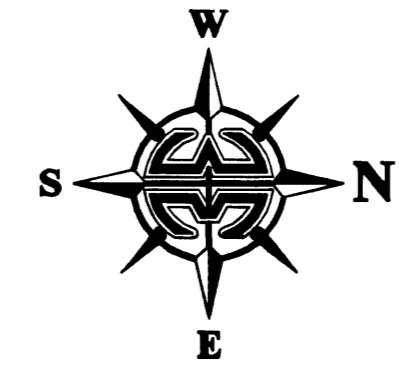
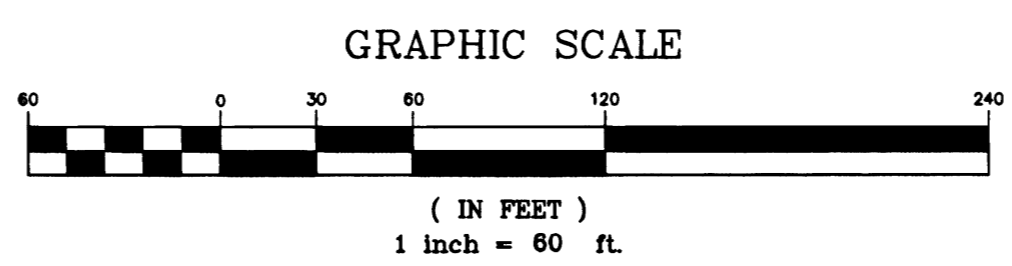
KEY MAP
(NOT TO SCALE)



CURVE	RADIUS	DELTA	LENGTH	CHORD	CHORD BEARING
C1	25.00'	90°00'00"	39.27'	35.36'	N 44°18'58" W
C2	25.00'	90°00'00"	39.27'	35.36'	N 45°41'02" E
C3	225.00'	14°24'21"	56.57'	56.42'	N 06°31'08" W
C4	175.00'	28°48'41"	88.00'	87.08'	N 00°41'02" E
C5	225.00'	14°24'21"	56.57'	56.42'	S 07°53'12" W
C6	975.00'	5°24'50"	92.13'	92.09'	N 03°23'27" E
C7	2025.00'	5°24'50"	191.34'	191.27'	S 03°23'27" W
C8	50.00'	90°00'00"	78.54'	70.71'	N 45°41'02" E
C9	25.00'	90°00'00"	39.27'	35.36'	S 45°41'02" W
C10	1000.00'	1°09'10"	20.12'	20.12'	N 01°15'37" E
C11	1000.00'	2°52'05"	50.06'	50.05'	N 03°16'15" E
C12	1000.00'	1°23'35"	24.31'	24.31'	N 05°24'05" E
C13	2000.00'	0°44'28"	25.87'	25.87'	S 05°43'58" W
C14	2000.00'	1°28'09"	50.12'	50.12'	S 04°38'19" W
C15	2000.00'	1°28'02"	50.05'	50.05'	S 03°12'14" W
C16	1829.39'	1°33'59"	50.01'	50.01'	S 01°44'41" W
C17	1276.30'	0°34'49"	12.93'	12.93'	S 00°58'06" W
C18	75.00'	24°14'34"	31.73'	31.50'	N 12°48'19" E
C19	75.00'	28°57'18"	37.90'	37.50'	N 39°24'16" E
C20	75.00'	28°57'18"	37.90'	37.50'	N 68°21'34" E
C21	75.00'	7°50'49"	10.27'	10.26'	N 86°45'37" E
C22	25.00'	52°24'38"	22.87'	22.08'	N 64°28'43" E
C23	25.00'	37°35'22"	16.40'	16.11'	N 19°28'43" E
C24	2050.00'	1°06'17"	39.52'	39.52'	S 01°14'10" W
C25	2170.00'	1°02'37"	39.52'	39.52'	S 01°12'20" W
C26	2170.00'	1°19'15"	50.02'	50.02'	S 02°33'16" W
C27	2050.00'	1°23'53"	50.03'	50.02'	S 02°29'15" W
C28	2050.00'	1°23'59"	50.08'	50.08'	S 03°53'12" W
C29	2170.00'	1°19'19"	50.07'	50.07'	S 03°42'33" W
C30	2170.00'	1°27'08"	55.00'	55.00'	S 05°05'47" W
C31	2050.00'	1°30'41"	54.07'	54.07'	S 05°20'31" W
C32	2170.00'	0°16'31"	10.43'	10.43'	S 05°57'36" W
C33	950.00'	0°03'25"	0.94'	0.94'	N 06°04'10" E
C34	950.00'	3°20'05"	55.29'	55.28'	N 04°22'25" E
C35	830.00'	3°05'56"	44.89'	44.89'	N 04°32'54" E
C36	830.00'	2°18'54"	33.54'	33.53'	N 01°50'29" E
C37	950.00'	2°01'21"	33.53'	33.53'	N 01°41'42" E
C38	2170.00'	5°24'50"	208.04'	204.67'	S 03°23'27" W
C39	830.00'	5°24'50"	78.43'	78.40'	N 03°23'27" E
C40	25.00'	37°35'22"	16.40'	16.11'	N 18°06'39" W
C41	25.00'	52°24'38"	22.87'	22.08'	N 63°06'39" W
C42	600.00'	25°07'13"	263.06'	260.96'	S 78°07'26" W
C43	600.00'	25°07'13"	263.06'	260.96'	N 78°07'26" E
C44	575.00'	18°37'19"	186.88'	186.06'	S 81°22'23" W
C45	575.00'	1°33'19"	15.61'	15.61'	S 71°17'03" W
C46	575.00'	4°56'35"	49.61'	49.59'	S 68°02'07" W
C47	625.00'	4°41'52"	51.25'	51.23'	N 78°05'47" E
C48	625.00'	8°49'12"	96.21'	96.12'	N 84°51'19" E
C49	25.00'	88°34'53"	38.65'	34.91'	S 44°58'28" W
C50	25.00'	53°07'48"	23.18'	22.36'	S 25°52'52" E
C51	25.00'	38°32'47"	16.82'	16.50'	S 71°31'01" E
C52	575.00'	3°28'16"	34.33'	34.33'	N 87°17'48" E
C53	575.00'	5°01'41"	50.46'	50.44'	N 83°04'19" E
C54	575.00'	5°06'31"	51.27'	51.25'	N 78°00'13" E
C55	575.00'	5°14'10"	52.55'	52.53'	N 72°49'53" E
C56	575.00'	4°38'59"	46.66'	46.65'	N 67°53'19" E
C57	625.00'	0°42'22"	7.70'	7.70'	S 65°55'00" W
C58	625.00'	4°56'35"	53.92'	53.90'	S 68°44'28" W
C59	625.00'	4°47'47"	52.32'	52.30'	S 73°36'40" W
C60	625.00'	4°41'35"	51.19'	51.18'	S 78°21'21" W
C61	625.00'	4°37'35"	50.46'	50.45'	S 83°00'56" W
C62	625.00'	4°35'29"	50.08'	50.07'	S 87°37'28" W
C63	625.00'	0°45'50"	8.33'	8.33'	N 89°41'53" W
C64	3.67'	122°04'50"	7.82'	6.42'	S 00°41'02" E
C65	43.65'	28°58'00"	22.07'	21.83'	S 76°12'27" W
C66	73.67'	16°38'36"	21.40'	21.32'	N 80°59'40" W
C67	6.17'	148°46'55"	16.02'	11.88'	N 01°43'06" E
C68	73.67'	14°34'29"	18.74'	18.69'	N 83°23'47" E
C69	43.66'	28°57'35"	22.07'	21.83'	S 74°50'10" E
C70	625.00'	4°48'12"	52.40'	52.38'	N 73°20'45" E
C71	625.00'	4°57'10"	54.03'	54.01'	N 68°28'04" E
C72	625.00'	0°25'40"	4.67'	4.67'	N 65°46'39" E

WILLIAM MOTT LAND SURVEYING INC.

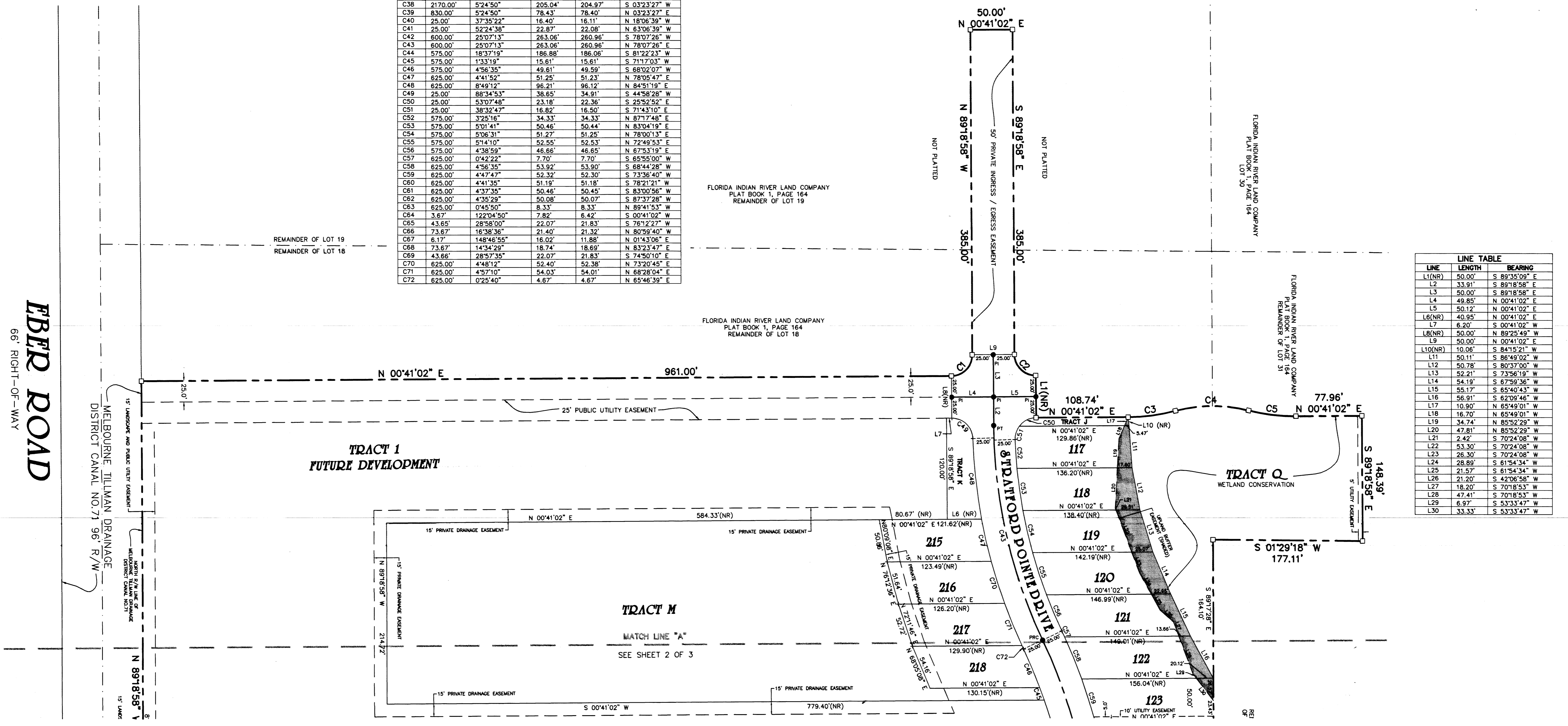
PREPARED BY:
SATELLITE BEACH PROFESSIONAL CENTER
1275 SOUTH PATRICK DRIVE, SUITE H
SATELLITE BEACH, FLORIDA, 32937-3955
PHONE (407) 773-4323
PROJECT NUMBER: 2000404
DRAWING NAME: STRATFORD-PH1.DWG
DRAWN BY: DANIEL D. GARNER



LEGEND

- 4"x4" CONCRETE MONUMENT WITH NAIL AND DISK MARKED "PRM PLS 5060" (SET)
- 4"x4" CONCRETE MONUMENT WITH NAIL AND DISK MARKED "PRM PLS 5060" (FOUND)
- NAIL AND DISK MARKED "PCP PLS 5060" (SET)
- NAIL AND DISK MARKED "PCP PLS 5060" (FOUND)
- ### CURVE NUMBER FOR CURVE TABLE
- ## LINE NUMBER FOR LINE TABLE
- ESMT. = EASEMENT
- P.U. & D.E. = PUBLIC UTILITIES AND DRAINAGE EASEMENT
- R/W = RIGHT-OF-WAY
- (R) = RADIAL
- (NR) = NON-RADIAL
- PC = POINT-ON-CURVE
- POB = POINT-OF-BEGINNING
- PI = POINT-OF-INTERSECTION
- POL = POINT-ON-LINE
- PRM = PERMANENT REFERENCE MONUMENT
- PCP = PERMANENT CONTROL POINT
- PRC = POINT-OF-REVERSE CURVATURE
- PCC = POINT-OF-COMPOUND CURVATURE

NOTICE: THIS PLAT, AS RECORDED IN ITS GRAPHIC FORM, IS THE OFFICIAL DEPICTION OF THE SUBDIVIDED LANDS DESCRIBED HEREIN AND WILL IN NO CIRCUMSTANCES BE SUPPLANTED IN AUTHORITY BY ANY OTHER GRAPHIC OR DIGITAL FORM OF THE PLAT. THERE MAY BE ADDITIONAL RESTRICTIONS THAT ARE NOT RECORDED ON THIS PLAT THAT MAY BE FOUND IN THE PUBLIC RECORDS OF THIS COUNTY.



LINE TABLE

LINE	LENGTH	BEARING
L1(NR)	50.00'	S 89°35'09" E
L2	33.91'	S 89°18'58" E
L3	50.00'	S 89°18'58" E
L4	49.85'	N 00°41'02" E
L5	50.12'	N 00°41'02" E
L6(NR)	40.95'	N 00°41'02" E
L7	6.20'	S 00°41'02" W
L8(NR)	50.00'	N 89°25'49" W
L9	50.00'	N 00°41'02" E
L10(NR)	10.06'	S 84°15'21" W
L11	50.11'	S 88°49'02" W
L12	50.78'	S 80°37'00" W
L13	52.21'	S 73°56'19" W
L14	54.19'	S 67°59'36" W
L15	55.17'	S 65°40'43" W
L16	56.91'	S 62°09'46" W
L17	10.90'	N 65°49'01" W
L18	16.70'	N 65°49'01" W
L19	34.74'	N 85°52'29" W
L20	47.81'	N 85°52'29" W
L21	2.42'	S 70°24'08" W
L22	53.30'	S 70°24'08" W
L23	26.30'	S 70°24'08" W
L24	28.89'	S 61°54'34" W
L25	21.57'	S 61°54'34" W
L26	21.20'	S 42°06'58" W
L27	18.20'	S 70°18'53" W
L28	47.41'	S 70°18'53" W
L29	6.97'	S 53°33'47" W
L30	33.33'	S 53°33'47" W