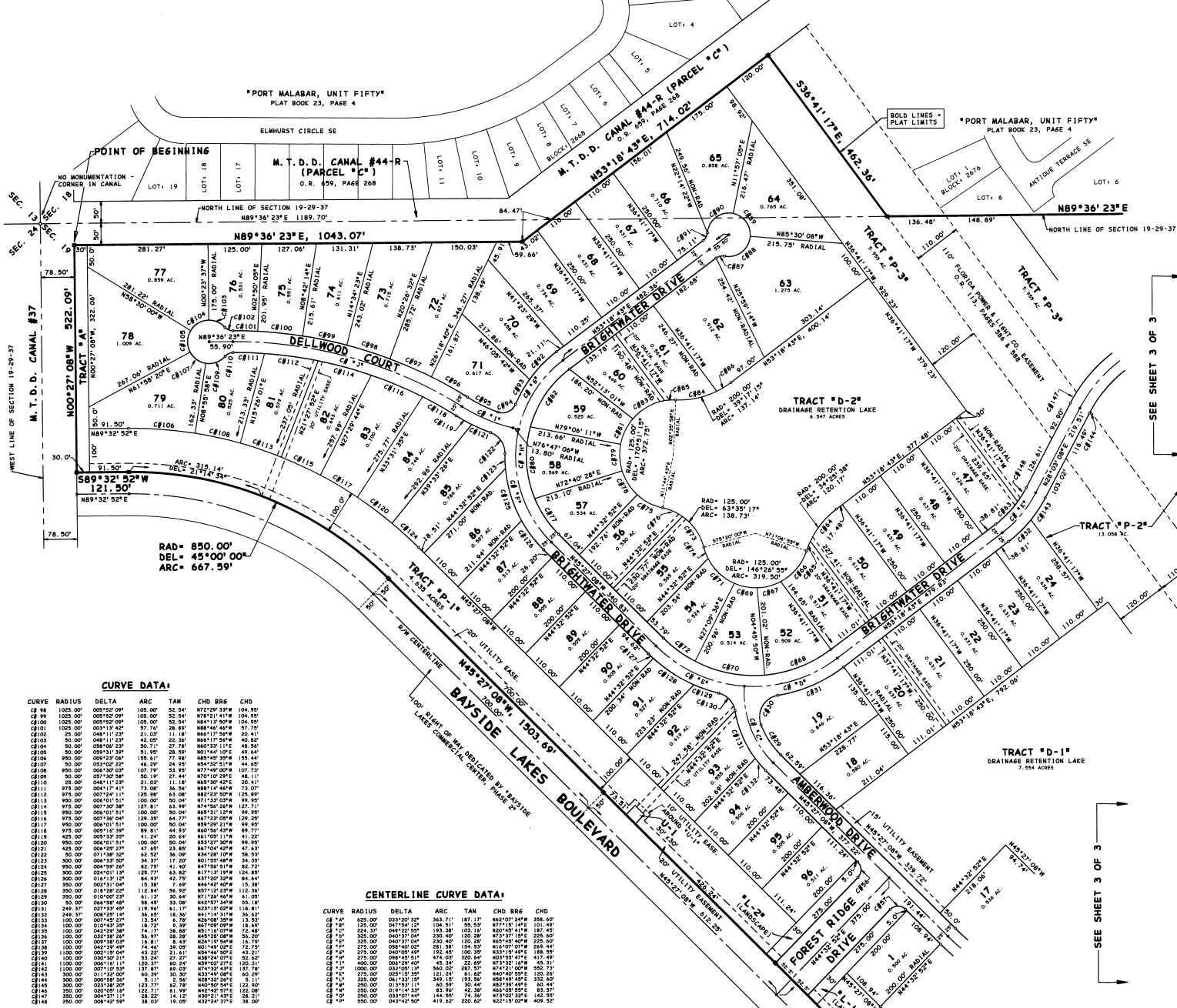




LAKE FOREST AT BAYSIDE LAKES



A PARCEL OF LAND LYING IN SECTION 19, TOWNSHIP 29 SOUTH, RANGE 37 EAST, CITY OF PALM BAY, BREVARD COUNTY, FLORIDA BEING A "REPLAT" OF PORTIONS OF SECTION 19, "FLORIDA INDIAN RIVER LAND CO." RECORDED IN PLAT BOOK 1, PAGE 165



CURVE DATA:

CURVE	RADIUS	DELTA	ARC	TAN	CHD	BRG	CHD
C1	800.00	009°15'54"	105.40	32.81	872°29'58"	128.90	80
C2	800.00	009°15'54"	105.40	32.81	850°09'04"	137.31	81
C3	800.00	009°15'54"	105.40	32.81	827°52'50"	146.72	82
C4	800.00	009°15'54"	105.40	32.81	805°36'36"	156.13	83
C5	800.00	009°15'54"	105.40	32.81	783°20'22"	165.54	84
C6	800.00	009°15'54"	105.40	32.81	761°04'08"	174.95	85
C7	800.00	009°15'54"	105.40	32.81	738°47'54"	184.36	86
C8	800.00	009°15'54"	105.40	32.81	716°31'40"	193.77	87
C9	800.00	009°15'54"	105.40	32.81	694°15'26"	203.18	88
C10	800.00	009°15'54"	105.40	32.81	671°59'12"	212.59	89
C11	800.00	009°15'54"	105.40	32.81	649°42'58"	222.00	90
C12	800.00	009°15'54"	105.40	32.81	627°26'44"	231.41	91
C13	800.00	009°15'54"	105.40	32.81	605°10'30"	240.82	92
C14	800.00	009°15'54"	105.40	32.81	582°54'16"	250.23	93
C15	800.00	009°15'54"	105.40	32.81	560°38'02"	259.64	94
C16	800.00	009°15'54"	105.40	32.81	538°21'48"	269.05	95
C17	800.00	009°15'54"	105.40	32.81	516°05'34"	278.46	96
C18	800.00	009°15'54"	105.40	32.81	493°49'20"	287.87	97
C19	800.00	009°15'54"	105.40	32.81	471°33'06"	297.28	98
C20	800.00	009°15'54"	105.40	32.81	449°16'52"	306.69	99
C21	800.00	009°15'54"	105.40	32.81	427°00'38"	316.10	100
C22	800.00	009°15'54"	105.40	32.81	404°44'24"	325.51	101
C23	800.00	009°15'54"	105.40	32.81	382°28'10"	334.92	102
C24	800.00	009°15'54"	105.40	32.81	360°11'56"	344.33	103
C25	800.00	009°15'54"	105.40	32.81	337°55'42"	353.74	104
C26	800.00	009°15'54"	105.40	32.81	315°39'28"	363.15	105
C27	800.00	009°15'54"	105.40	32.81	293°23'14"	372.56	106
C28	800.00	009°15'54"	105.40	32.81	271°07'00"	381.97	107
C29	800.00	009°15'54"	105.40	32.81	248°50'46"	391.38	108
C30	800.00	009°15'54"	105.40	32.81	226°34'32"	400.79	109
C31	800.00	009°15'54"	105.40	32.81	204°18'18"	410.20	110
C32	800.00	009°15'54"	105.40	32.81	182°02'04"	419.61	111
C33	800.00	009°15'54"	105.40	32.81	159°45'50"	429.02	112
C34	800.00	009°15'54"	105.40	32.81	137°29'36"	438.43	113
C35	800.00	009°15'54"	105.40	32.81	115°13'22"	447.84	114
C36	800.00	009°15'54"	105.40	32.81	92°57'08"	457.25	115
C37	800.00	009°15'54"	105.40	32.81	70°40'54"	466.66	116
C38	800.00	009°15'54"	105.40	32.81	48°24'40"	476.07	117
C39	800.00	009°15'54"	105.40	32.81	26°08'26"	485.48	118
C40	800.00	009°15'54"	105.40	32.81	3°52'12"	494.89	119
C41	800.00	009°15'54"	105.40	32.81	17°51'58"	504.30	120
C42	800.00	009°15'54"	105.40	32.81	41°51'44"	513.71	121
C43	800.00	009°15'54"	105.40	32.81	65°51'30"	523.12	122
C44	800.00	009°15'54"	105.40	32.81	89°51'16"	532.53	123
C45	800.00	009°15'54"	105.40	32.81	113°51'02"	541.94	124
C46	800.00	009°15'54"	105.40	32.81	137°50'48"	551.35	125
C47	800.00	009°15'54"	105.40	32.81	161°50'34"	560.76	126
C48	800.00	009°15'54"	105.40	32.81	185°50'20"	570.17	127
C49	800.00	009°15'54"	105.40	32.81	209°50'06"	579.58	128
C50	800.00	009°15'54"	105.40	32.81	233°49'52"	588.99	129
C51	800.00	009°15'54"	105.40	32.81	257°49'38"	598.40	130
C52	800.00	009°15'54"	105.40	32.81	281°49'24"	607.81	131
C53	800.00	009°15'54"	105.40	32.81	305°49'10"	617.22	132
C54	800.00	009°15'54"	105.40	32.81	329°48'56"	626.63	133
C55	800.00	009°15'54"	105.40	32.81	353°48'42"	636.04	134
C56	800.00	009°15'54"	105.40	32.81	377°48'28"	645.45	135
C57	800.00	009°15'54"	105.40	32.81	401°48'14"	654.86	136
C58	800.00	009°15'54"	105.40	32.81	425°48'00"	664.27	137
C59	800.00	009°15'54"	105.40	32.81	449°47'46"	673.68	138
C60	800.00	009°15'54"	105.40	32.81	473°47'32"	683.09	139
C61	800.00	009°15'54"	105.40	32.81	497°47'18"	692.50	140
C62	800.00	009°15'54"	105.40	32.81	521°47'04"	701.91	141
C63	800.00	009°15'54"	105.40	32.81	545°46'50"	711.32	142
C64	800.00	009°15'54"	105.40	32.81	569°46'36"	720.73	143
C65	800.00	009°15'54"	105.40	32.81	593°46'22"	730.14	144
C66	800.00	009°15'54"	105.40	32.81	617°46'08"	739.55	145
C67	800.00	009°15'54"	105.40	32.81	641°45'54"	748.96	146
C68	800.00	009°15'54"	105.40	32.81	665°45'40"	758.37	147
C69	800.00	009°15'54"	105.40	32.81	689°45'26"	767.78	148
C70	800.00	009°15'54"	105.40	32.81	713°45'12"	777.19	149
C71	800.00	009°15'54"	105.40	32.81	737°44'58"	786.60	150
C72	800.00	009°15'54"	105.40	32.81	761°44'44"	796.01	151
C73	800.00	009°15'54"	105.40	32.81	785°44'30"	805.42	152
C74	800.00	009°15'54"	105.40	32.81	809°44'16"	814.83	153
C75	800.00	009°15'54"	105.40	32.81	833°44'02"	824.24	154
C76	800.00	009°15'54"	105.40	32.81	857°43'48"	833.65	155
C77	800.00	009°15'54"	105.40	32.81	881°43'34"	843.06	156
C78	800.00	009°15'54"	105.40	32.81	905°43'20"	852.47	157
C79	800.00	009°15'54"	105.40	32.81	929°43'06"	861.88	158
C80	800.00	009°15'54"	105.40	32.81	953°42'52"	871.29	159
C81	800.00	009°15'54"	105.40	32.81	977°42'38"	880.70	160
C82	800.00	009°15'54"	105.40	32.81	1001°42'24"	890.11	161
C83	800.00	009°15'54"	105.40	32.81	1025°42'10"	899.52	162
C84	800.00	009°15'54"	105.40	32.81	1049°41'56"	908.93	163
C85	800.00	009°15'54"	105.40	32.81	1073°41'42"	918.34	164
C86	800.00	009°15'54"	105.40	32.81	1097°41'28"	927.75	165
C87	800.00	009°15'54"	105.40	32.81	1121°41'14"	937.16	166
C88	800.00	009°15'54"	105.40	32.81	1145°41'00"	946.57	167
C89	800.00	009°15'54"	105.40	32.81	1169°40'46"	955.98	168
C90	800.00	009°15'54"	105.40	32.81	1193°40'32"	965.39	169
C91	800.00	009°15'54"	105.40	32.81	1217°40'18"	974.80	170
C92	800.00	009°15'54"	105.40	32.81	1241°40'04"	984.21	171
C93	800.00	009°15'54"	105.40	32.81	1265°39'50"	993.62	172
C94	800.00	009°15'54"	105.40	32.81	1289°39'36"	1003.03	173
C95	800.00	009°15'54"	105.40	32.81	1313°39'22"	1012.44	174
C96	800.00	009°15'54"	105.40	32.81	1337°39'08"	1021.85	175
C97	800.00	009°15'54"	105.40	32.81	1361°38'54"	1031.26	176
C98	800.00	009°15'54"	105.40	32.81	1385°38'40"	1040.67	177
C99	800.00	009°15'54"	105.40	32.81	1409°38'26"	1050.08	178
C100	800.00	009°15'54"	105.40	32.81	1433°38'12"	1059.49	179

CENTERLINE CURVE DATA:

CURVE	RADIUS	DELTA	ARC	TAN	CHD	BRG	CHD
C1	825.00	003°20'22"	363.71	187.17	862°07'54"	356.60	80
C2	825.00	003°20'22"	363.71	187.17	877°18'14"	401.46	81
C3	825.00	003°20'22"	363.71	187.17	892°28'34"	446.32	82
C4	825.00	003°20'22"	363.71	187.17	907°38'54"	491.18	83
C5	825.00	003°20'22"	363.71	187.17	922°49'14"	536.04	84
C6	825.00	003°20'22"	363.71	187.17	937°59'34"	580.90	85
C7	825.00	003°20'22"	363.71	187.17	953°09'54"	625.76	86
C8	825.00	003°20'22"	363.71	187.17	968°20'14"	670.62	87
C9	825.00	003°20'22"	363.71	187.17	983°30'34"	715.48	88
C10	825.00	003°20'22"	363.71	187.17	998°40'54"	760.34	89
C11	825.00	003°20'22"	363.71	187.17	1013°51'14"	805.20	90
C12	825.00	003°20'22"	363.71	187.17	1029°01'34"	850.06	91
C13	825.00	003°20'22"	363.71	187.17	1044°11'54"	894.92	92
C14	825.00	003°20'22"	363.71	187.17	1059°22'14"	939.78	93
C15	825.00	003°20'22"	363.71	187.17	1074°32'34"	984.64	94
C16	825.00	003°20'22"	363.71	187.17	1089°42'54"	1029.50	95
C17	825.00	003°20'22"	363.71	187.17	1104°53'14"	1074.36	96
C18	825.00	003°20'22"	363.71	187.17	1120°03'34"	1119.22	97
C19	825.00	003°20'22"	363.71	187.17	1135°13'54"	1164.08	98
C20	825.00	003°20'22"	363.71	187.17	1150°24'14"	1208.94	99
C21	825.00	003°20'22"	363.71	187.17	1165°34'34"	1253.80	100
C22	825.00	003°20'22"	363.71	187.17	1180°44'54"	1298.66	101
C23	825.00	003°20'22"	363.71	187.17	1195°55'14"	1343.52	102
C24	825.00	003°20'22"	363.71	187.17	1211°05'34"	1388.38	103
C25	825.00	003°20'22"	363.71	187.17	1226°15'54"	1433.24	104
C26	825.00	003°20'22"	363.71	187.17	1241°26'14"	1478.10	105
C27	825.00	003°20'22"	363.71	187.17	1256°36'34"	1522.96	106
C28	825.00	003°20'22"	363.71	187.17	1271°46'54"	1567.82	107
C29</							