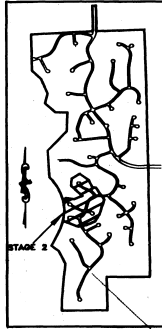


KEY MAP



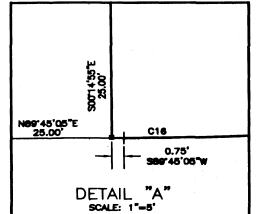
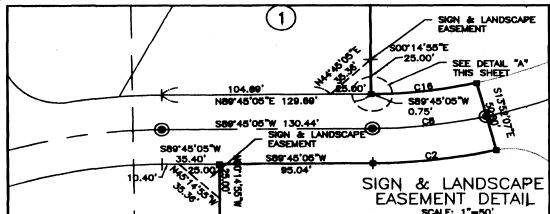
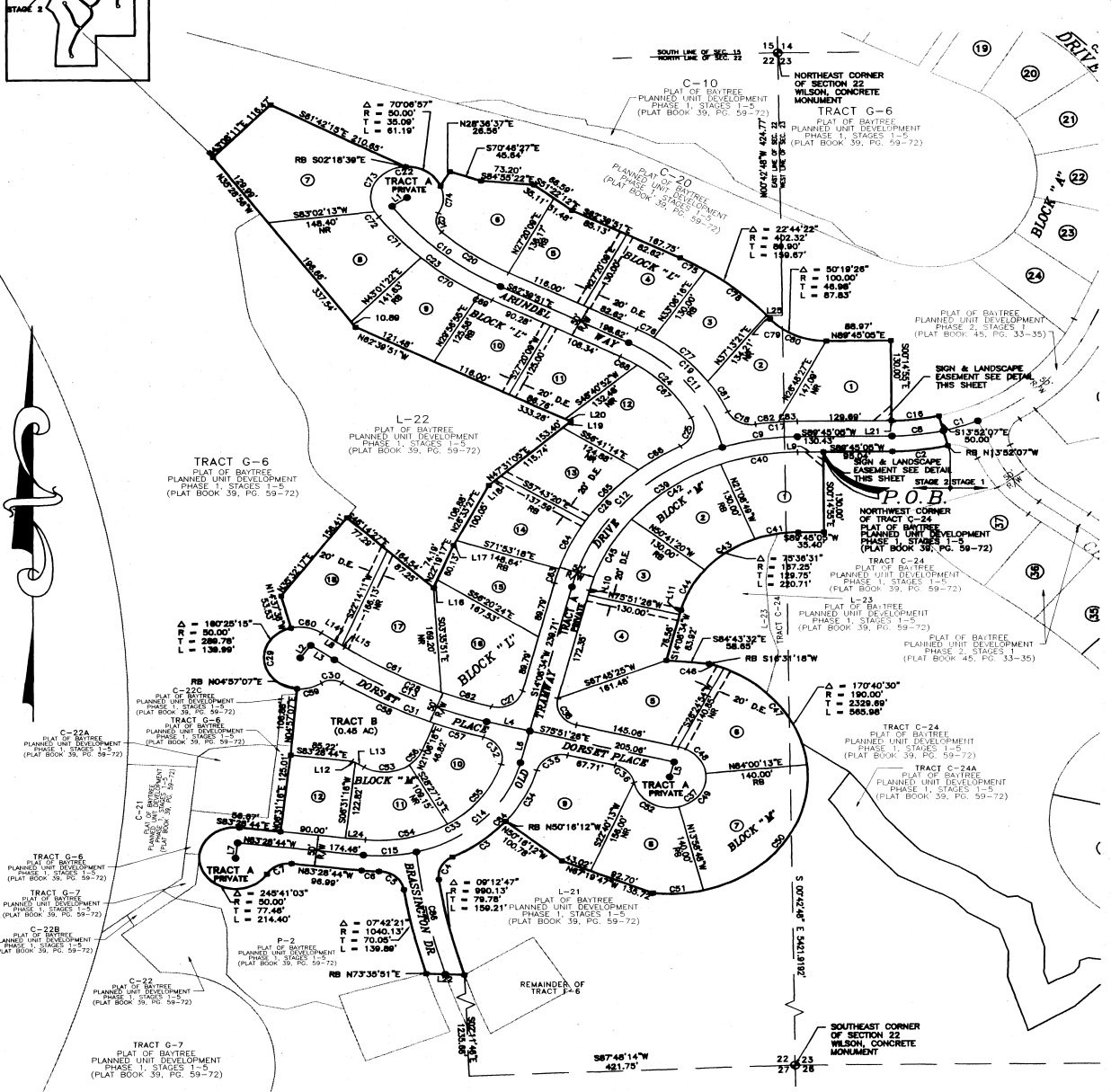
# ARUNDEL BAYTREE, PLANNED UNIT DEVELOPMENT PHASE 2, STAGE 2

A REPLAT OF A PORTION OF TRACT F-6,  
PLAT OF BAYTREE PLANNED UNIT DEVELOPMENT  
PHASE 1, STAGES 1-5 AS RECORDED IN  
PLAT BOOK 39, PAGES 59-72.

**SECTIONS 22 & 23,  
TOWNSHIP 26 SOUTH, RANGE 36 EAST  
BREVARD COUNTY, FLORIDA**

PLAT BOOK 46 PAGE 11  
SHEET 2 OF 2  
SECTION 22, 23, TWP. 26 South,  
RANGE 36 East

930108301.dwg 9-11-00 91603 am EST

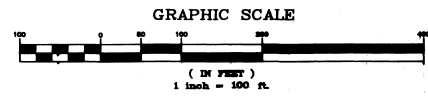


CURVE TABLE

CURVE	LENGTH	RADIUS	CENTRAL ANGLE	CHORD	BEARING
C1	80.18	300.00	09°36'03"	80.12	N71°20'21"E
C2	77.48	328.00	13°37'12"	77.04	N62°56'26"E
C3	63.87	225.00	23°56'46"	63.29	N51°41'41"E
C4	43.87	35.00	71°48'11"	41.08	S27°44'58"W
C5	46.50	35.00	80°52'28"	38.40	N58°08'00"E
C6	23.92	225.00	09°00'36"	23.91	S89°51'00"E
C7	40.12	35.00	86°41'03"	37.88	S83°40'45"W
C8	71.31	300.00	13°37'12"	71.15	N68°58'28"E
C9	108.28	322.22	18°43'04"	104.81	S80°23'33"W
C10	189.81	413.63	27°38'00"	187.88	S48°50'21"E
C11	220.44	247.32	31°04'08"	213.21	N37°07'48"W
C12	318.87	322.22	36°53'27"	308.99	S42°30'17"E
C13	333.28	881.70	20°11'58"	232.07	S84°33'42"E
C14	414.00	200.00	81°18'24"	203.84	N44°47'48"E
C15	73.88	200.00	21°04'18"	73.14	N62°30'17"E
C16	68.37	275.00	13°37'12"	68.22	N68°58'28"E
C17	87.85	347.22	09°30'42"	87.88	S82°59'44"W
C18	46.88	35.00	78°28'14"	43.51	S61°52'31"E
C19	188.88	274.32	30°30'28"	183.33	N41°52'31"E
C20	114.39	388.63	16°51'51"	113.86	S84°13'56"E
C21	33.13	25.00	78°58'21"	30.78	S07°50'18"E
C22	212.46	50.00	248°10'35"	89.43	S80°30'04"E
C23	208.18	438.63	27°11'23"	208.21	S48°04'08"E
C24	141.48	224.32	38°27'13"	138.07	N44°28'14"W
C25	83.84	35.00	88°17'47"	48.74	N17°54'18"E
C26	280.57	347.22	47°56'35"	282.18	S38°08'52"W
C27	86.71	35.00	81°11'45"	80.01	N68°44'28"E
C28	294.48	50.00	207°54'28"	123.28	S80°30'04"E
C29	219.10	50.00	281°04'28"	81.37	S00°00'04"E
C30	28.82	25.00	88°34'49"	28.17	S88°45'15"W
C31	212.21	888.70	17°43'21"	211.38	S88°58'31"E
C32	84.14	35.00	81°53'40"	80.41	N68°53'33"E
C33	242.73	175.00	78°28'18"	223.74	N58°47'07"E
C34	84.23	225.00	23°56'46"	83.88	N24°53'58"E
C35	84.01	35.00	88°24'30"	48.81	S69°18'18"E
C36	40.12	35.00	86°41'03"	37.88	N43°00'54"W
C37	214.40	50.00	248°41'03"	84.02	N48°59'08"E
C38	84.98	35.00	80°03'54"	48.90	S00°17'28"E
C39	362.28	287.22	78°36'31"	364.41	S81°58'48"W
C40	108.42	287.22	20°53'54"	107.82	S79°18'08"W
C41	81.00	187.22	20°53'54"	80.87	S78°18'08"W
C42	153.28	287.22	28°36'31"	151.57	S84°04'58"W
C43	88.23	187.22	28°36'31"	88.28	S84°04'58"W
C44	73.47	187.22	28°10'08"	72.88	S88°43'37"W
C45	84.98	130.87	28°10'08"	128.53	S88°43'37"W
C46	24.17	180.00	08°41'12"	22.16	N70°00'08"W
C47	201.80	180.00	80°47'43"	182.28	N58°23'08"W
C48	84.98	50.00	88°24'30"	87.28	N40°30'08"E
C49	71.57	50.00	82°00'58"	85.82	N38°00'43"E
C50	271.88	180.00	82°00'58"	249.34	N38°00'43"E
C51	70.22	180.00	211°55'28"	70.22	S69°18'18"E
C52	81.88	50.00	82°48'28"	73.02	S87°04'38"E
C53	86.28	50.00	88°01'28"	82.32	N68°36'08"E
C54	112.88	175.00	34°44'28"	114.82	N68°53'72"E
C55	124.80	175.00	40°53'38"	122.27	N57°28'48"E
C56	28.74	55.00	30°38'05"	28.38	N38°35'50"E
C57	71.31	888.70	80°57'01"	71.28	S71°58'12"E
C58	143.10	888.70	11°58'22"	142.84	N48°00'08"E
C59	36.33	50.00	40°28'18"	34.80	N74°42'28"E
C60	43.78	50.00	80°08'58"	43.98	N78°32'41"W
C61	181.80	838.70	13°38'32"	181.24	N18°18'08"E
C62	74.88	838.70	08°33'30"	72.84	S71°22'58"E
C63	24.08	347.22	14°09'58"	24.08	S18°07'38"W
C64	88.88	347.22	14°09'58"	88.84	S09°11'41"E
C65	111.31	347.22	18°21'57"	110.83	S41°27'38"W
C66	89.38	347.22	11°28'33"	88.23	S88°21'53"W
C67	242.73	222.32	28°24'17"	133.42	N40°50'08"E
C68	28.71	222.32	08°52'57"	28.89	N08°13'23"E
C69	20.00	438.63	02°38'45"	20.00	S81°21'28"E
C70	100.00	438.63	13°04'27"	89.87	S80°30'58"E
C71	84.98	438.63	11°30'11"	87.81	S41°13'31"E
C72	10.13	50.00	11°38'43"	10.12	S33°14'53"E
C73	106.77	50.00	118°07'34"	85.40	S50°07'28"W
C74	49.80	50.00	82°18'03"	44.08	N49°00'08"E
C75	40.81	402.32	08°48'07"	40.49	N68°48'47"W
C76	111.88	402.32	18°24'23"	111.33	N48°56'32"E
C77	7.47	402.32	01°03'32"	7.47	N40°27'28"W
C78	88.23	1080.00	90°47'28"	80.74	S07°50'18"E
C79	86.50	272.32	11°53'12"	86.40	N28°18'01"W
C80	31.44	347.22	08°11'44"	31.43	S82°50'00"W
C81	28.81	347.22	04°18'28"	28.70	S87°50'21"W
C82	183.04	243.00	48°38'36"	178.03	S07°50'18"E
C83	202.88	1015.13	11°28'24"	202.36	S11°08'18"E

LINE TABLE

LINE	BEARING	LENGTH
L1	N68°58'08"E	25.00
L2	N68°32'17"W	25.00
L3	S84°27'43"E	38.88
L4	S79°42'56"E	81.28
L5	S14°08'34"W	25.00
L6	S14°08'34"W	82.78
L7	N68°51'17"E	25.00
L8	N68°47'43"E	38.88
L9	S88°48'06"W	35.40
L10	N18°58'54"E	7.38
L11	S14°08'34"W	7.38
L12	N68°58'08"E	5.28
L20	N68°36'57"E	0.64
L13	N68°58'08"E	14.84
L14	S88°47'43"E	35.22
L15	S84°27'43"E	4.74
L16	N28°18'17"E	14.08
L17	N68°53'72"E	7.38
L18	N47°31'06"E	22.80
L19	S47°31'06"W	15.08
L21	N68°58'08"E	0.75
L22	N68°48'44"E	27.78
L23	N68°17'43"E	21.87



- THIS PLAT PREPARED BY -  
**B.S.E. CONSULTANTS, INC.**  
CONSULTING, ENGINEERING, LAND SURVEYING  
318 S. Harbor City Blvd., Suite 4, Melbourne, Florida (321) 728-3874  
DATE: JUNE 1, 2000 BSE DWG. #93010302