

SUNSET LAKES, WEST-ISLAND ESTATES

SECTION 3, TOWNSHIP 24 SOUTH, RANGE 36 EAST

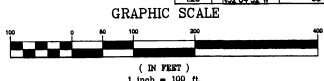
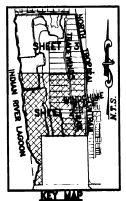
BREVARD COUNTY, FLORIDA

PLAT BOOK 45 PAGE 86
SHEET 2 OF 3
SECTION 3, TWP. 24 S., RANGE 36 E.

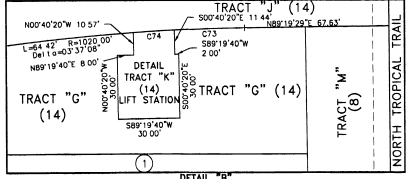
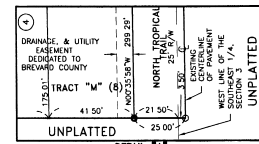
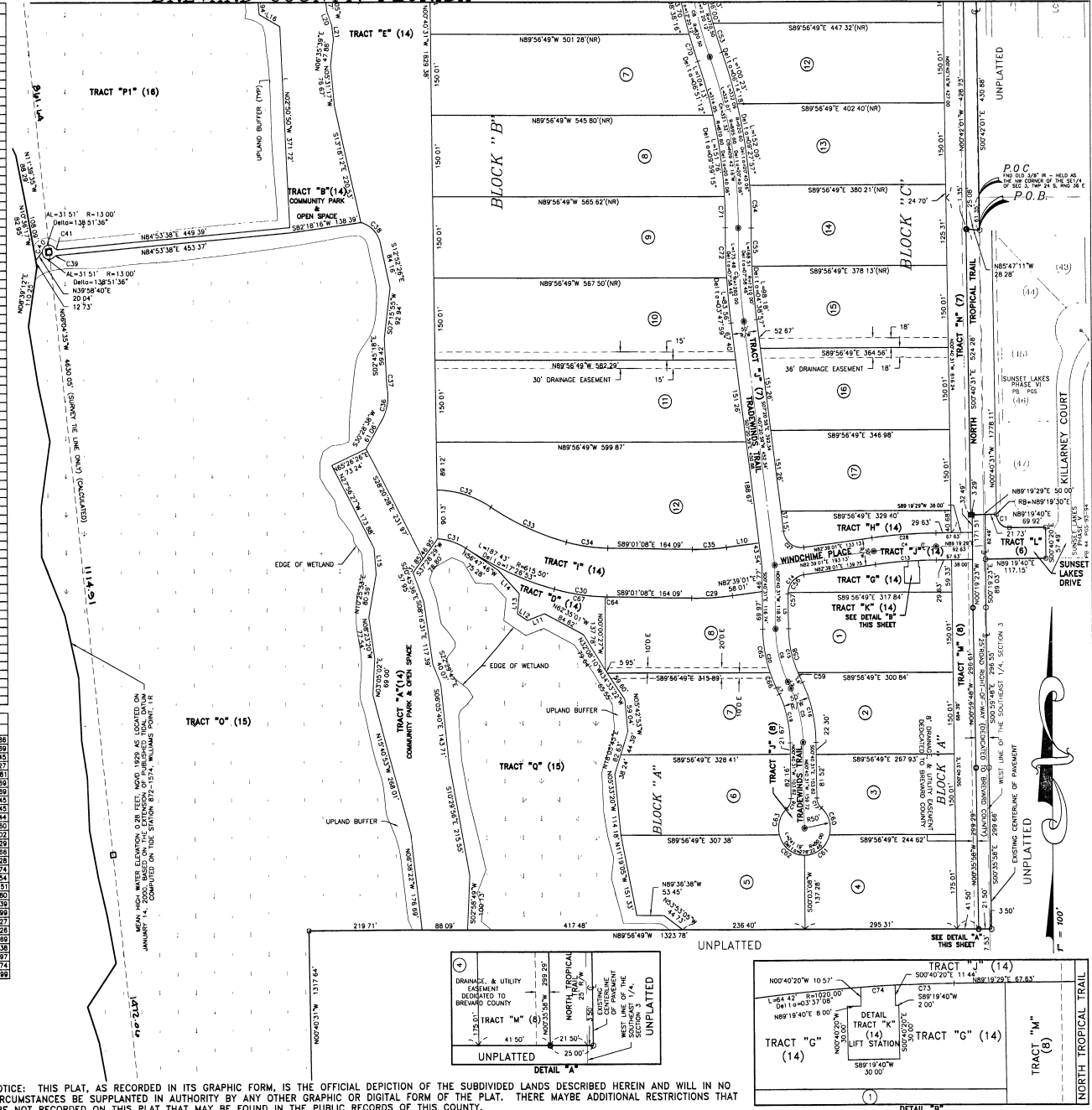
FOR CONTINUATION SEE SHEET 3

CURVE TABLE				
CURVE	LENGTH	RADIUS	CENTRAL ANGLE	CHORD
C1	39.27	25.00	89.5849°	35.35
C2	84.02	1345.00	03.3544°	84.01
C3	85.98	1370.00	03.3446°	85.57
C4	121.73	1045.00	08.4028°	121.88
C5	102.51	534.00	22.0539°	101.88
C6	102.51	534.00	22.0539°	101.89
C7	172.00	1235.00	07.2848°	171.88
C8	171.28	1265.00	07.2848°	170.85
C9	48.50	225.00	11.5028°	48.42
C10	156.15	285.00	32.0509°	153.72
C11	143.90	275.00	12.1233°	143.63
C12	85.37	850.00	07.3129°	85.30
C13	118.82	1020.00	06.4028°	118.75
C14	50.80	35.00	83.1937°	48.53
C15	81.58	209.00	22.0539°	80.83
C16	113.48	239.00	22.0539°	112.98
C17	21.03	25.00	48.1123°	20.41
C18	21.03	25.00	48.1123°	20.41
C19	81.58	209.00	22.0539°	80.83
C20	113.48	239.00	22.0539°	112.98
C21	41.33	200.00	11.5028°	41.28
C22	82.08	225.00	07.3129°	82.02
C23	20.08	25.00	48.0530°	18.53
C24	22.11	25.00	50.4028°	21.40
C25	88.85	675.00	07.3129°	88.59
C26	51.67	250.00	11.5028°	51.57
C27	54.98	35.00	80.0000°	49.50
C28	124.84	1070.00	08.4028°	124.87
C29	79.24	545.00	08.1930°	79.17
C30	103.22	420.00	14.0450°	102.98
C31	57.89	114.50	28.0137°	57.88
C32	110.13	304.50	30.5118°	108.80
C33	160.03	225.50	17.2833°	159.41
C34	81.10	330.00	14.0450°	80.89
C35	66.18	455.00	08.1930°	66.10
C36	58.45	85.00	38.0234°	55.41
C37	35.70	245.00	08.1930°	35.68
C38	56.81	51.83	82.3432°	53.84
C39	7.21	10.00	41.1740°	7.05
C40	83.51	13.00	27.4312°	17.11
C41	9.85	10.00	56.2532°	9.45
C42	118.83	88.88	70.2038°	111.89
C43	54.80	42.50	73.4119°	50.31
C44	40.52	35.00	66.1942°	38.29
C45	78.28	50.00	89.2428°	70.53
C46	54.47	50.00	82.2918°	51.82
C47	66.23	825.00	08.0417°	66.20
C48	21.81	875.00	01.5050°	21.81
C49	87.03	875.00	02.4124°	87.01
C50	41.70	700.00	03.2448°	41.70
C51	30.22	230.00	07.3129°	30.20
C52	47.77	837.00	02.4014°	47.77
C53	58.97	770.50	04.1411°	58.98
C54	78.78	620.80	04.3756°	78.73
C55	70.33	1210.00	03.1848°	70.32
C56	48.27	35.00	79.0134°	44.54
C57	2.83	35.00	04.1737°	2.83
C58	85.13	209.00	22.0539°	84.54
C59	6.43	209.00	01.4548°	6.43
C60	55.59	50.00	83.0033°	55.58
C61	86.14	50.00	78.4728°	81.42
C62	86.14	50.00	78.4734°	81.42
C63	53.82	81.40	14.4009°	51.28
C64	3.49	420.00	00.2833°	3.49
C65	83.55	299.00	18.2828°	83.19
C66	28.81	298.00	06.3730°	28.89
C67	99.73	420.00	13.3617°	99.49
C68	6.30	850.00	00.3350°	6.30
C69	25.80	280.00	09.1758°	25.89
C70	52.97	820.50	02.4158°	52.98
C71	88.18	870.80	02.4938°	88.18
C72	81.92	1260.00	04.1004°	81.90
C73	34.38	1020.00	01.5050°	34.38
C74	20.02	1020.00	01.5050°	20.02
C75	15.54	300.00	23.8248°	12.45
C76	49.33	84.51	28.2414°	48.77
C77	22.01	128.81	09.5841°	21.88

LINE TABLE		
LINE	BEARING	LENGTH
L1	N02°46'16"W	8.88
L2	N82°46'30"W	13.89
L3	N19°32'35"W	87.45
L4	N18°14'50"W	12.37
L5	N02°40'51"W	84.81
L6	S82°48'30"W	13.89
L7	N82°46'30"W	13.89
L8	S19°32'35"W	87.45
L9	N18°14'50"W	12.37
L10	N82°38'01"W	85.44
L11	S89°11'38"W	35.80
L12	N88°42'15"W	32.03
L13	N02°48'28"W	37.29
L14	N43°17'07"W	86.88
L15	N45°20'21"W	48.28
L16	N11°02'58"W	45.74
L17	N2°11'45"E	41.54
L18	S82°41'14"W	51.51
L19	S03°38'01"E	55.80
L20	S82°42'30"E	27.39
L21	S07°12'58"E	28.89
L22	N89°34'24"W	47.27
L23	S89°30'22"E	53.26
L24	N45°52'50"W	28.89
L25	N45°54'33"W	24.38
L26	S84°34'41"E	19.97
L27	N03°21'11"W	27.74
L28	N82°04'52"W	38.99



B.S.E. CONSULTANTS, INC.
CONSULTING, ENGINEERING, LAND SURVEYING
312 S. Harbor City Blvd Suite 4, Melbourne, Florida (321) 729-2678



NOTICE: THIS PLAT, AS RECORDED IN ITS GRAPHIC FORM, IS THE OFFICIAL DEPICTION OF THE SUBDIVIDED LANDS DESCRIBED HEREIN AND WILL IN NO CIRCUMSTANCES BE SUPPLANTED IN AUTHORITY BY ANY OTHER GRAPHIC OR DIGITAL FORM OF THE PLAT. THERE MAYBE ADDITIONAL RESTRICTIONS THAT ARE NOT RECORDED ON THIS PLAT THAT MAY BE FOUND IN THE PUBLIC RECORDS OF THIS COUNTY.