

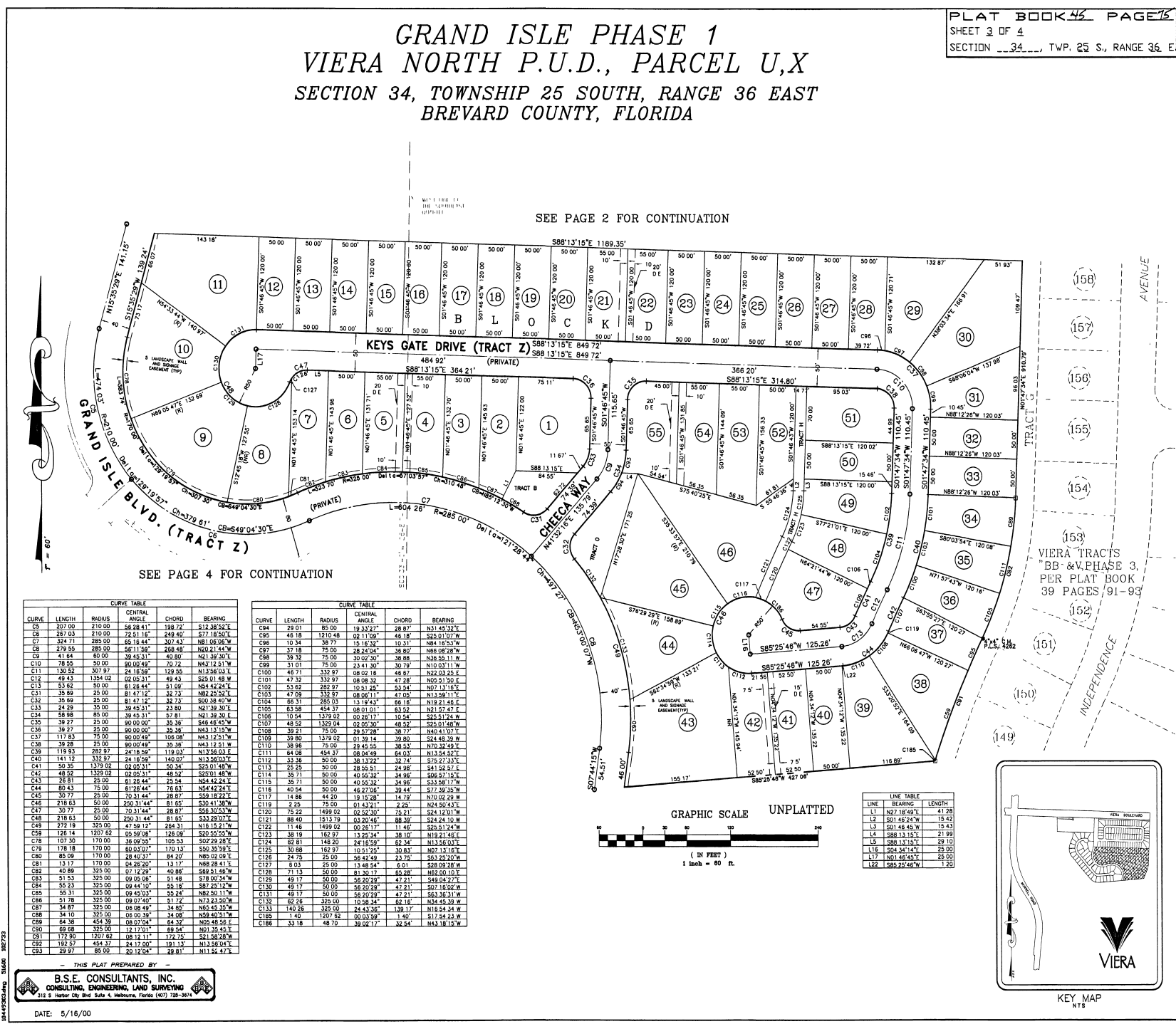
GRAND ISLE PHASE 1
 VIERA NORTH P.U.D., PARCEL U,X
 SECTION 34, TOWNSHIP 25 SOUTH, RANGE 36 EAST
 BREVARD COUNTY, FLORIDA

DRAWING NUMBER
45-75

DRAWING NUMBER

DRAWING NUMBER

DRAWING NUMBER

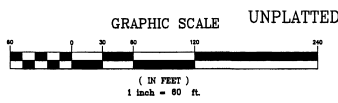


SEE PAGE 2 FOR CONTINUATION

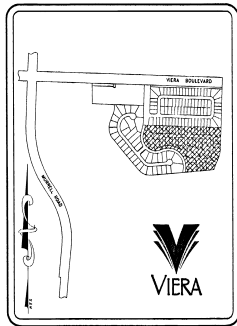
SEE PAGE 4 FOR CONTINUATION

CURVE	LENGTH	RADIUS	CENTRAL ANGLE	CHORD	BEARING
C5	207.00	210.00	56.28 41'	388.72	S12.38 52'E
C6	287.03	210.00	72.51 16'	249.40	S77.18 50'W
C7	324.71	285.00	65.16 44'	207.43	N81.08 06'W
C8	279.55	285.00	56.11 59'	268.48	N20.21 44'W
C9	41.64	60.00	39.45 31'	40.80	N21.39 30'E
C10	78.55	50.00	90.00 49'	70.72	N44.12 51'W
C11	130.52	207.00	24.18 59'	129.50	N17.56 03'E
C12	49.43	1354.02	02.05 31'	49.43	S25.01 48'W
C13	53.66	350.00	81.28 44'	51.09	N54.42 24'E
C31	35.69	25.00	81.47 12'	32.23	N82.02 52'E
C32	35.69	25.00	81.47 12'	32.23	S00.38 40'W
C33	24.29	35.00	39.45 31'	23.80	N21.39 30'E
C34	58.88	65.00	39.45 31'	57.81	N21.39 30'E
C35	39.27	25.00	90.00 00'	35.35	S46.46 45'W
C36	39.27	25.00	90.00 00'	35.35	N43.13 55'W
C37	117.83	75.00	50.00 49'	106.98	N44.12 51'W
C38	39.28	25.00	90.00 49'	35.35	N43.12 51'W
C39	119.83	292.87	24.18 59'	119.03	N17.56 03'E
C40	141.12	332.97	24.18 59'	140.07	N14.56 03'E
C41	30.35	1379.02	02.05 31'	30.34	S25.01 48'W
C42	48.52	1359.02	02.05 31'	48.32	S25.01 48'W
C43	28.81	25.00	81.28 44'	25.94	N54.42 24'E
C44	80.43	75.00	81.28 44'	76.63	N54.42 24'E
C45	30.77	25.00	70.31 44'	28.87	S50.18 25'E
C46	218.63	50.00	250.31 44'	81.65	S30.41 38'W
C47	20.77	25.00	70.31 44'	28.87	S50.30 53'W
C48	218.63	50.00	250.31 44'	81.65	S30.29 07'E
C49	272.19	325.00	47.59 12'	264.31	N18.15 21'W
C59	126.14	1207.62	05.59 06'	126.09	S20.55 50'W
C78	107.50	170.00	35.09 55'	105.53	S00.29 28'E
C79	178.18	170.00	60.03 07'	170.13	S50.35 59'E
C80	85.09	170.00	28.40 37'	84.20	N85.02 09'E
C81	131.17	170.00	50.29 20'	131.17	N85.28 41'E
C82	40.89	325.00	07.12 29'	40.89	S69.51 48'W
C83	51.53	325.00	09.09 06'	51.48	S78.00 34'W
C84	55.03	325.00	09.44 10'	54.16	S82.25 12'W
C85	55.31	325.00	09.45 03'	55.24	N82.50 11'W
C86	51.78	325.00	08.07 40'	51.74	N73.43 50'W
C87	34.87	325.00	08.08 49'	34.80	N55.45 35'W
C88	34.10	325.00	08.50 39'	34.08	N52.40 51'W
C89	64.38	325.00	08.07 40'	64.32	N82.48 56'W
C90	69.68	325.00	12.17 01'	69.54	N01.35 45'E
C91	172.90	1207.62	08.12 11'	172.75	S21.58 28'W
C92	192.57	1434.17	04.13 00'	191.13	N13.50 04'E
C93	29.87	85.00	20.12 04'	29.81	N11.54 47'E

CURVE	LENGTH	RADIUS	CENTRAL ANGLE	CHORD	BEARING
C84	29.81	85.00	18.33 27'	28.87	N11.45 32'E
C85	48.18	1210.48	02.11 00'	48.18	S25.01 07'W
C86	10.34	287.71	15.16 32'	10.31	N84.18 53'W
C87	37.18	75.00	28.24 04'	36.80	N88.08 00'W
C88	39.32	75.00	30.02 30'	38.88	N36.55 11'W
C89	31.01	75.00	23.41 30'	30.79	N10.03 11'W
C105	48.71	332.97	08.08 18'	48.87	N22.03 25'E
C107	47.32	332.97	08.08 18'	47.28	N05.51 50'E
C102	53.62	282.97	10.51 24'	52.54	N07.13 16'E
C103	47.09	332.97	08.08 17'	47.00	N13.98 11'E
C104	66.31	285.03	13.19 45'	66.18	N19.21 46'E
C105	83.98	454.37	08.01 01'	83.52	N21.57 47'E
C106	10.94	1379.02	00.28 17'	10.94	S25.01 47'W
C107	48.52	1329.04	02.05 30'	48.52	S25.01 48'W
C108	39.21	75.00	29.57 28'	38.77	N40.41 07'E
C110	38.88	75.00	29.45 55'	38.83	N70.32 49'E
C111	64.08	454.37	08.04 49'	64.03	N15.54 52'E
C112	53.38	50.00	38.13 22'	52.74	S75.27 57'E
C113	25.25	50.00	28.55 51'	24.98	N41.52 57'E
C114	35.11	50.00	40.55 32'	34.92	S08.37 15'E
C116	40.54	50.00	46.27 06'	39.44	S77.39 35'W
C117	14.66	44.20	19.55 28'	14.29	N70.02 49'W
C119	2.25	75.00	01.43 21'	2.25	N70.50 43'E
C120	75.22	1499.02	02.52 30'	75.21	S24.12 01'W
C121	88.40	1513.78	03.20 46'	88.30	S24.24 10'W
C122	11.46	1499.02	00.26 17'	11.45	S25.51 24'W
C123	38.19	182.97	13.26 34'	38.10	N19.21 48'E
C124	24.62	182.97	16.18 59'	24.21	N19.21 48'E
C125	30.88	182.97	10.51 25'	30.83	N07.13 16'E
C128	24.75	25.00	46.42 49'	23.75	S62.20 20'W
C127	2.03	25.00	01.43 21'	2.03	N70.50 43'E
C128	71.13	50.00	81.50 17'	65.28	N62.00 10'E
C129	49.17	50.00	56.20 29'	47.21	S49.04 27'E
C130	49.17	50.00	56.20 29'	47.21	S01.18 02'W
C131	49.17	50.00	56.20 29'	47.21	S63.36 31'W
C132	62.26	325.00	10.56 34'	62.16	N34.45 39'W
C133	140.28	325.00	32.92 17'	139.17	N19.24 34'W
C135	1.40	1207.62	00.03 59'	1.40	S17.54 23'W
C186	33.18	48.70	39.04 17'	32.54	N43.18 10'W



LINE	BEARING	LENGTH
L1	N27.18 49'E	41.28
L2	S01.46 24'W	15.40
L3	S01.46 45'W	15.43
L4	S88.13 15'E	21.99
L5	S88.13 15'E	29.10
L16	S04.34 41'E	25.00
L17	N01.48 45'E	25.00
L22	S85.29 45'W	1.20



— THIS PLAT PREPARED BY —
B.S.E. CONSULTANTS, INC.
 CONSULTING, ENGINEERING, LAND SURVEYING
 315 S Harbor City Blvd Suite A, Melbourne, Florida (321) 720-3874
 DATE: 5/16/00