

DRAWING NUMBER  
**45-72**

DRAWING NUMBER

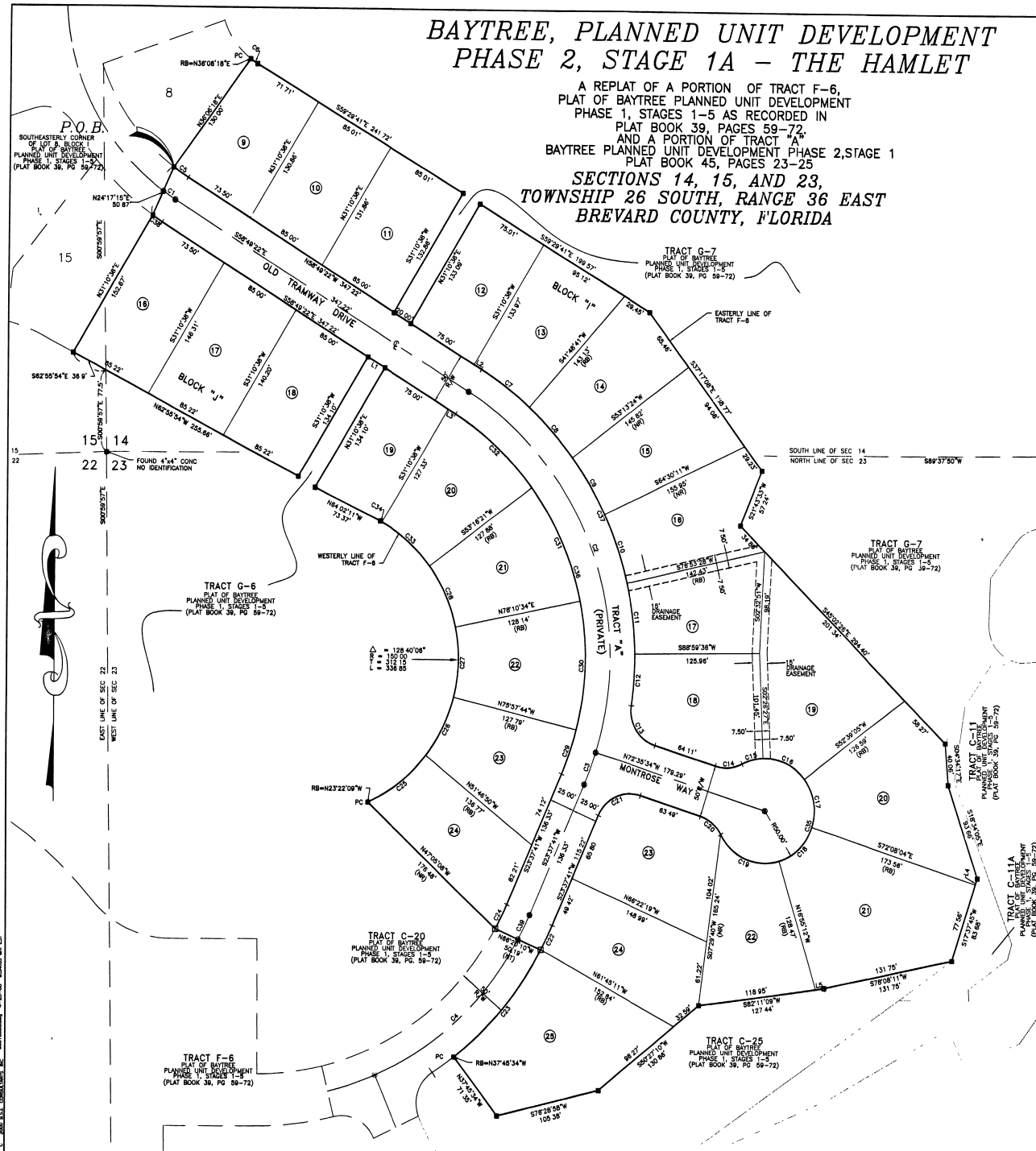
DRAWING NUMBER

DRAWING NUMBER

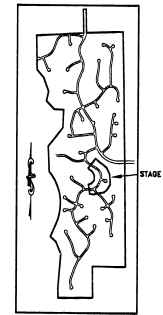
# BAYTREE, PLANNED UNIT DEVELOPMENT PHASE 2, STAGE 1A - THE HAMLET

A REPLAT OF A PORTION OF TRACT F-6,  
PLAT OF BAYTREE PLANNED UNIT DEVELOPMENT  
PHASE 1, STAGES 1-5 AS RECORDED IN  
PLAT BOOK 39, PAGES 59-72,  
AND A PORTION OF TRACT "A"  
BAYTREE PLANNED UNIT DEVELOPMENT PHASE 2, STAGE 1  
PLAT BOOK 45, PAGES 23-25  
**SECTIONS 14, 15, AND 23,**  
**TOWNSHIP 26 SOUTH, RANGE 36 EAST**  
**BREVARD COUNTY, FLORIDA**

PLAT BOOK **45** PAGE **72**  
SHEET **2** OF **2**  
SECTION **14, 15, 23**, TWP. **26** South,  
RANGE **36** East



KEY MAP

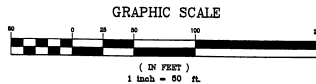


LINE TABLE

LINE	BEARING	LENGTH
L1	N58°49'22"W	20.00
L2	N58°49'22"W	8.73
L3	S58°49'22"E	8.73
L4	S17°37'45"W	8.12
L5	S82°11'02"W	8.48

CURVE TABLE

CURVE	LENGTH	RADIUS	CENTRAL ANGLE	CHORD	BEARING
C1	14.56	230.00	03°37'40"	14.58	S82°00'32"E
C2	39.14	300.00	78.1349'	370.38	N20°42'28"W
C3	32.57	300.00	08°13'14"	32.66	S02°31'04"E
C4	198.53	300.00	37°55'03"	184.83	N47°35'19"E
C5	17.83	225.00	04°25'40"	17.63	S55°21'42"E
C6	5.24	75.00	09°17'52"	8.74	S57°02'28"E
C7	80.32	325.00	10.38°03"	80.23	N53°30'20"W
C8	63.73	325.00	11°24'43"	64.62	N42°28'37"W
C9	63.98	325.00	11°16'47"	63.98	N31°08'15"W
C10	70.27	325.00	12°23'17"	70.13	N19°18'11"W
C11	68.68	325.00	12.00°00"	68.52	N07°02'28"W
C12	50.03	325.00	09°45'12"	49.88	N03°24'12"E
C13	49.12	35.00	80.24°22"	45.18	S32°23'23"E
C14	22.25	35.00	45.03°57"	20.84	N03°24'12"E
C15	22.04	50.00	20°15'04"	21.80	S74°50'01"W
C16	48.08	80.00	58°05'31"	45.28	N84°53'41"W
C17	48.18	50.00	55°12'52"	46.54	N09°44'30"W
C18	48.18	50.00	55°12'52"	46.54	N45°28'24"E
C19	69.31	50.00	79°26'34"	63.89	S37°12'24"E
C20	27.95	35.00	45°00'37"	26.54	S50°02'36"E
C21	51.18	35.00	83°48'45"	48.74	S85°31'04"W
C22	26.20	325.00	04°37'08"	26.19	N25°58'10"E
C23	132.10	325.00	23°29'37"	128.11	N62°14'53"E
C24	26.18	275.00	05°27'18"	26.17	N62°14'53"E
C25	74.38	150.00	28.24°41"	73.62	N52°20'30"E
C26	63.31	150.00	24°10'54"	62.84	N38°17'44"E
C27	67.71	150.00	22°51'42"	67.13	N01°05'25"E
C28	65.20	150.00	24.54°13"	64.69	N24°16'32"W
C29	44.60	275.00	08°17'51"	44.52	N18°56'04"E
C30	125.49	275.00	26°08'44"	124.40	N01°15'48"E
C31	120.89	275.00	25°10'50"	119.89	N24°23'59"W
C32	104.79	275.00	21.49°58"	104.12	N47°49'23"W
C33	64.33	150.00	24.34°14"	63.83	N49°00'46"W
C34	1.94	150.00	02°44'22"	1.94	N17°42'04"E
C35	235.79	50.00	27°11'54"	230.59	N17°42'04"E
C36	395.74	275.00	82°27'03"	382.45	N17°35'51"W
C37	37.98	325.00	05°36'17"	37.04	N25°30'17"W
C38	11.51	255.00	02°35'12"	11.51	S87°14'02"E
C39	26.19	300.00	02°00'08"	26.19	N82°07'44"E



THIS PLAT PREPARED BY  
**B.S.E. CONSULTANTS, INC.**  
CONSULTING, ENGINEERING, LAND SURVEYING  
312 S. Harbor City Blvd. Suite 4, Melbourne, Florida 32911-733-3874  
DATE MARCH 10, 2000 BSE DWG #93010302