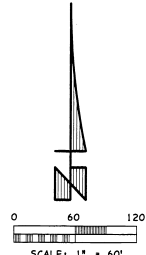
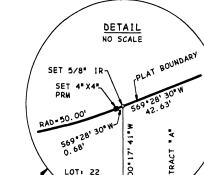
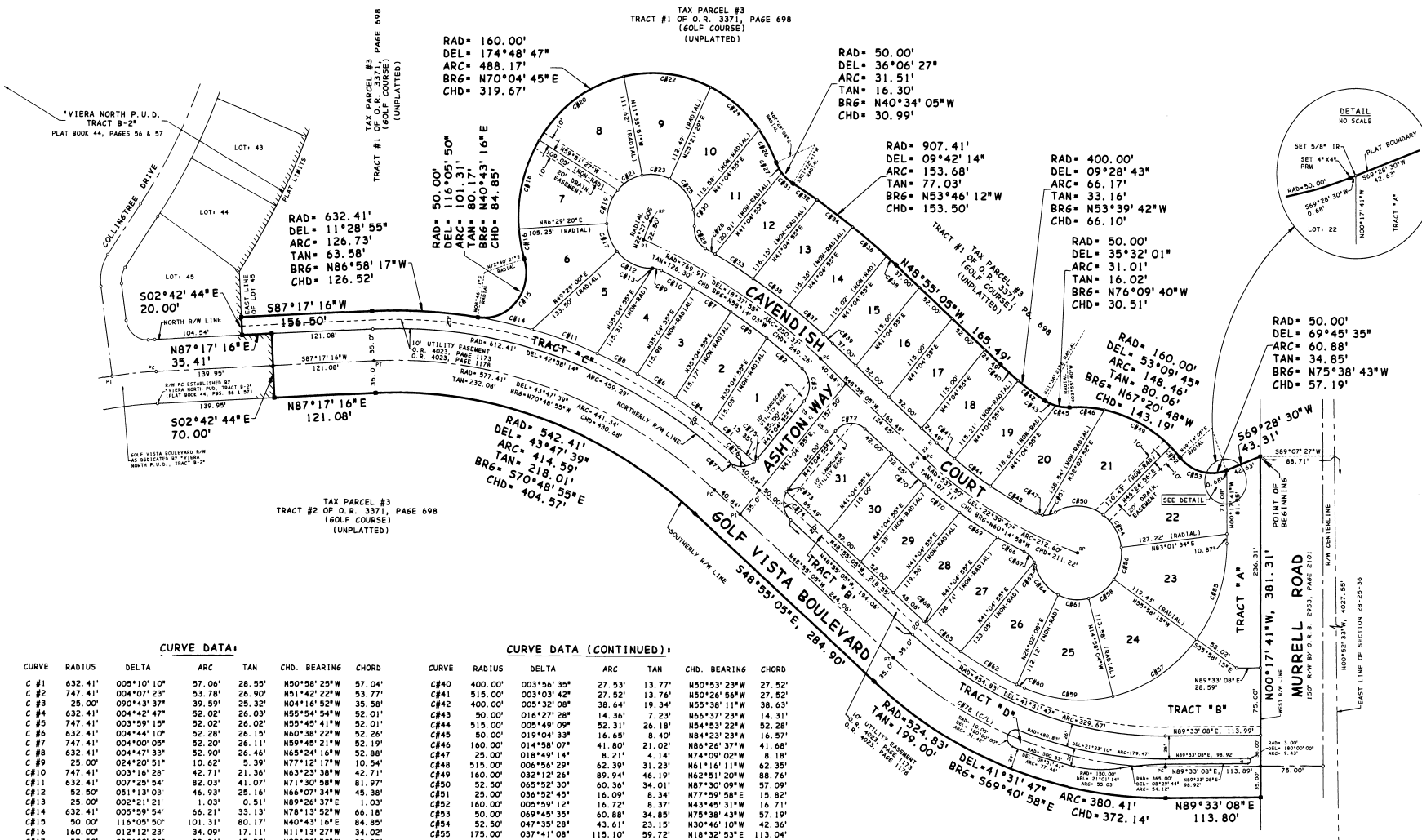


# ASHTON

VIERA NORTH P.U.D., TRACT B-1

A SUBDIVISION LYING IN SECTION 28, TOWNSHIP 25 SOUTH, RANGE 36 EAST, CITY OF ROCKLEDGE, BREVARD COUNTY, FLORIDA

PLAT BOOK 45 PAGE 53  
SHEET 2 OF 2  
SEC. 28, TWP. 25 S., R6E. 36 E.



**CURVE DATA:**

CURVE	RADIUS	DELTA	ARC	TAN	CHD.	BEARING	CHORD
C #1	632.41'	005°10'10"	57.06'	28.55'	N50°58'25"W	27.50'	47.04'
C #2	747.41'	004°07'23"	53.78'	26.90'	N51°42'22"W	53.77'	35.58'
C #3	25.00'	090°43'37"	39.59'	25.32'	N04°16'52"W	35.58'	52.01'
C #4	632.41'	004°42'47"	52.02'	26.03'	N55°54'54"W	52.01'	35.58'
C #5	747.41'	003°59'19"	52.02'	26.02'	N50°44'11"W	52.01'	35.58'
C #6	632.41'	004°44'10"	52.28'	26.15'	N60°38'22"W	52.26'	35.58'
C #7	747.41'	004°00'05"	52.20'	26.11'	N59°45'21"W	52.19'	35.58'
C #8	632.41'	004°47'33"	52.90'	26.46'	N65°24'16"W	52.88'	35.58'
C #9	25.00'	024°20'51"	10.52'	5.39'	N77°12'17"W	10.54'	10.54'
C#10	747.41'	003°16'28"	42.71'	21.36'	N63°32'38"W	42.71'	35.58'
C#11	632.41'	007°25'54"	82.03'	41.07'	N71°30'58"W	81.97'	35.58'
C#12	52.50'	051°13'03"	46.93'	25.16'	N66°07'34"W	45.38'	35.58'
C#13	25.00'	002°21'21"	1.03'	0.51'	N80°26'37"E	1.03'	1.03'
C#14	632.41'	005°59'54"	66.21'	33.13'	N78°13'52"W	66.18'	35.58'
C#15	50.00'	116°05'50"	101.31'	80.17'	N40°43'16"E	84.85'	35.58'
C#16	160.00'	012°12'23"	34.09'	17.11'	N11°13'27"W	34.02'	35.58'
C#17	52.50'	037°00'20"	33.91'	17.57'	N22°00'50"W	33.32'	35.58'
C#18	160.00'	037°04'14"	103.52'	53.64'	N13°24'51"E	101.72'	35.58'
C#19	52.50'	044°38'03"	40.90'	21.55'	N18°48'22"E	39.87'	35.58'
C#20	160.00'	045°23'57"	126.78'	66.93'	N54°38'57"E	123.49'	35.58'
C#21	52.50'	037°13'46"	34.11'	17.68'	N59°44'16"E	33.52'	35.58'
C#22	160.00'	038°06'01"	106.40'	55.25'	N83°56'04"W	104.45'	35.58'
C#23	52.50'	037°00'20"	33.91'	17.57'	N83°08'41"W	33.32'	35.58'
C#24	160.00'	027°04'59"	75.63'	38.54'	N51°00'34"W	74.93'	35.58'
C#25	52.50'	050°47'36"	46.54'	24.92'	N39°14'41"W	45.03'	35.58'
C#26	160.00'	014°57'13"	41.76'	21.00'	N29°50'59"W	41.64'	35.58'
C#27	50.00'	015°18'17"	13.36'	6.72'	N30°10'01"W	13.32'	35.58'
C#28	792.41'	000°56'43"	13.07'	6.54'	N61°51'12"W	13.07'	35.58'
C#29	25.00'	068°35'21"	29.33'	17.05'	N28°01'53"W	28.17'	35.58'
C#30	52.50'	020°06'43"	18.43'	9.31'	N05°47'34"W	18.33'	35.58'
C#31	50.00'	020°48'10"	18.15'	9.18'	N46°13'14"W	18.05'	35.58'
C#32	907.41'	002°10'05"	34.34'	17.17'	N57°32'16"W	34.34'	35.58'
C#33	792.41'	003°49'31"	52.90'	26.46'	N59°28'05"W	52.89'	35.58'
C#34	907.41'	003°18'04"	52.28'	26.15'	N54°48'12"W	52.27'	35.58'
C#35	792.41'	003°47'12"	52.37'	26.19'	N53°09'43"W	52.37'	35.58'
C#36	907.41'	003°17'14"	52.06'	26.04'	N51°30'33"W	52.05'	35.58'
C#37	792.41'	000°56'51"	15.01'	7.50'	N49°23'30"W	15.01'	35.58'
C#38	907.41'	001°56'51"	15.01'	7.50'	N49°23'30"W	15.01'	35.58'
C#39	792.41'	001°05'06"	15.01'	7.50'	N49°23'30"W	15.01'	35.58'

**CURVE DATA (CONTINUED):**

CURVE	RADIUS	DELTA	ARC	TAN	CHD.	BEARING	CHORD
C#40	400.00'	003°56'35"	27.53'	13.77'	N50°52'23"W	27.52'	35.58'
C#41	515.00'	003°03'42"	27.52'	13.76'	N50°26'56"W	27.52'	35.58'
C#42	400.00'	005°32'08"	38.63'	19.34'	N55°38'11"W	38.63'	35.58'
C#43	50.00'	016°27'28"	14.36'	7.23'	N66°37'23"W	14.31'	35.58'
C#44	515.00'	005°49'09"	52.31'	26.18'	N54°53'22"W	52.28'	35.58'
C#45	50.00'	019°04'33"	16.05'	8.40'	N84°23'23"W	16.05'	35.58'
C#46	160.00'	014°58'07"	41.80'	21.02'	N86°26'37"W	41.68'	35.58'
C#47	25.00'	018°49'14"	8.21'	4.14'	N74°09'02"W	8.18'	35.58'
C#48	515.00'	006°56'59"	62.39'	31.23'	N61°16'11"W	62.39'	35.58'
C#49	160.00'	032°12'24"	89.94'	46.19'	N63°12'20"W	89.76'	35.58'
C#50	52.50'	065°52'50"	60.36'	34.01'	N87°30'59"W	57.00'	35.58'
C#51	25.00'	036°52'45"	16.09'	8.34'	N77°59'58"E	15.82'	35.58'
C#52	160.00'	005°59'12"	16.72'	8.37'	N43°49'31"W	16.71'	35.58'
C#53	50.00'	069°45'35"	60.88'	34.85'	N75°12'51"W	57.19'	35.58'
C#54	52.50'	047°35'28"	43.61'	23.15'	N30°46'10"W	42.36'	35.58'
C#55	175.00'	037°41'08"	115.04'	59.72'	N18°32'53"E	113.04'	35.58'
C#56	52.50'	041°00'11"	37.57'	19.63'	N13°31'39"E	36.77'	35.58'
C#57	175.00'	039°34'59"	120.90'	62.97'	N57°10'56"E	118.51'	35.58'
C#58	52.50'	041°00'11"	37.57'	19.63'	N54°31'50"E	36.77'	35.58'
C#59	175.00'	035°19'08"	107.88'	55.71'	N85°22'01"W	106.18'	35.58'
C#60	434.83'	001°20'04"	10.13'	5.06'	N67°02'25"W	10.13'	35.58'
C#61	52.50'	041°00'11"	37.57'	19.63'	N84°27'58"W	36.77'	35.58'
C#62	434.83'	010°03'52"	76.38'	38.20'	N61°20'28"W	76.28'	35.58'
C#63	25.00'	008°47'19"	3.83'	1.92'	N20°34'44"W	3.83'	35.58'
C#64	52.50'	047°46'48"	43.78'	23.25'	N40°04'28"W	42.52'	35.58'
C#65	434.83'	006°52'20"	52.15'	26.11'	N52°52'22"W	52.12'	35.58'
C#66	560.00'	009°20'23"	35.95'	17.98'	N63°28'54"W	35.95'	35.58'
C#67	25.00'	040°20'52"	17.61'	9.19'	N45°08'49"W	17.24'	35.58'
C#68	434.83'	008°31'07"	3.94'	1.97'	N49°10'38"W	3.94'	35.58'
C#69	560.00'	005°24'17"	52.82'	26.43'	N58°56'24"W	52.81'	35.58'
C#70	25.00'	009°20'23"	52.15'	26.11'	N52°52'22"W	52.12'	35.58'
C#71	560.00'	001°58'47"	19.35'	9.68'	N49°54'29"W	19.35'	35.58'
C#72	25.00'	090°00'00"	39.27'	25.00'	N86°04'55"E	35.36'	35.58'
C#73	25.00'	01°13'21"	5.03'	2.53'	N39°18'48"E	5.03'	35.58'
C#74	25.00'	078°27'47"	34.52'	17.11'	N42°27'47"E	34.52'	35.58'
C#75	25.00'	011°22'59"	4.97'	2.49'	N46°46'24"E	4.96'	35.58'
C#76	25.00'	077°47'37"	33.94'	20.17'	N88°38'18"W	31.40'	35.58'
C#77	612.41'	000°40'28"	6.40'	3.40'	N49°01'07"W	6.40'	35.58'
C#78	489.83'	041°31'47"	355.04'	185.73'	N69°40'58"W	347.32'	35.58'

**ABBREVIATIONS:**

- RAD = RADIUS
- NON-RAD = NON-RADIAL
- ARC = ARC LENGTH
- TAN = TANGENT
- CHD = CHORD
- BRG = BEARING
- PC = POINT OF CURVATURE
- PT = POINT OF TANGENCY
- PI = POINT OF INTERSECTION
- R/W = RADIUS POINT
- R/W = RIGHT OF WAY
- O.R. = OFFICIAL RECORDS
- C/L = CENTERLINE

TAX PARCEL #3  
TRACT #2 OF O.R. 3371, PAGE 698  
(GOLF COURSE)  
(UNPLATTED)

POINT OF COMMENCEMENT  
PND. 4°44' CM / L5 8913  
S. E. CORNER OF SEC. 28

