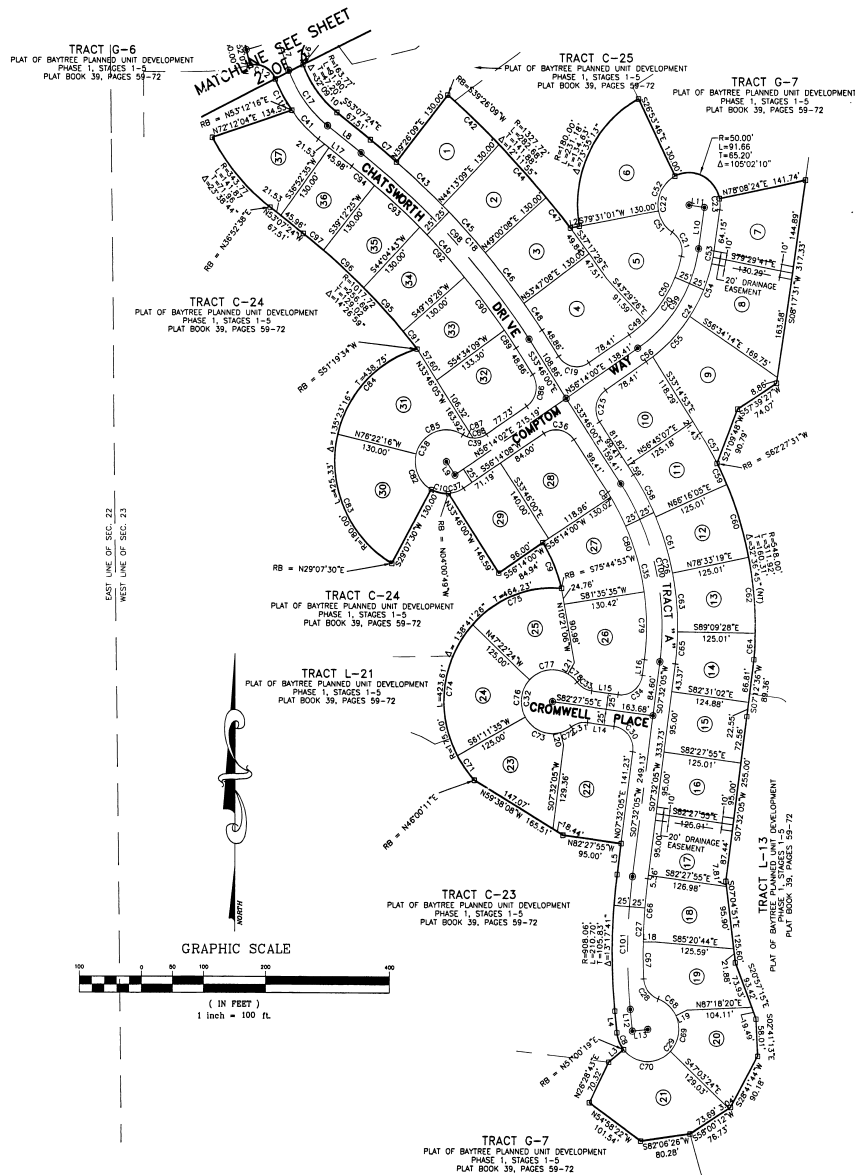


PLAT OF BAYTREE, PLANNED UNIT DEVELOPMENT PHASE 2, STAGE 1

A REPLAT OF A PORTION OF TRACT F-6,
PLAT OF BAYTREE PLANNED UNIT DEVELOPMENT
PHASE 1, STAGES 1-5 AS RECORDED IN
PLAT BOOK 39, PAGES 59-72.

SECTIONS 14 AND 23, TOWNSHIP 26 SOUTH, RANGE 36 EAST
BREVARD COUNTY, FLORIDA

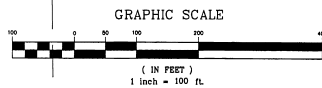
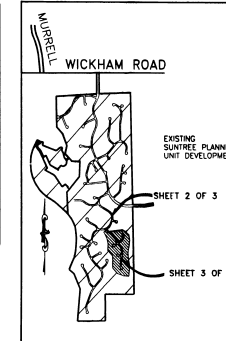
PLAT BOOK 45 PAGE 25
SHEET 3 OF 3
SECTION 14, & 23 TWP. 26 South,
RANGE 36 East



CURVE	LENGTH	RADIUS	CENTRAL ANGLE	CHORD	BEARING
C1	17.63	295.00	0450'39"	17.63	S82°13'32"E
C2	49.12	35.00	80°24'23"	45.19	S32°23'22"E
C3	27.55	35.00	45°05'37"	26.84	N84°1'28"E
C4	27.55	35.00	45°05'37"	26.84	N00°20'26"W
C5	51.18	35.00	83°46'44"	46.74	S65°21'04"W
C6	47.59	35.00	77°54'10"	44.01	S17°48'34"W
C7	33.50	1197.72	02°33'39"	33.49	N89°01'17"E
C8	29.00	50.00	33°14'05"	26.80	S22°24'39"E
C9	77.19	243.00	18°11'57"	76.86	N23°1'05"W
C10	29.92	50.00	33°38'19"	28.52	S77°46'02"E
C11	54.55	213.77	14°37'14"	54.40	S29°29'10"E
C12	49.90	35.00	81°41'34"	45.78	N63°01'20"W
C13	11.51	255.00	02°30'11"	11.51	S57°14'47"E
C14	14.56	250.00	03°37'39"	14.56	S57°00'32"E
C15	57.30	300.00	08°12'14"	57.56	N20°1'05"E
C16	59.23	300.00	10°03'54"	59.49	N71°08'12"E
C17	105.93	188.77	32°09'07"	104.55	S37°02'50"E
C18	35.14	1107.72	16°47'34"	34.98	N29°09'36"W
C19	54.98	35.00	90°00'00"	49.50	S78°46'00"E
C20	151.40	199.91	43°23'38"	147.81	N34°32'11"E
C21	42.87	35.00	89°50'59"	40.07	N22°05'03"W
C22	104.82	50.00	100°06'42"	86.85	S00°30'53"W
C23	17.89	50.00	20°09'13"	17.50	N01°42'00"W
C24	209.11	249.81	47°26'29"	203.08	N32°18'46"E
C25	54.98	35.00	90°00'00"	49.50	S11°44'00"W
C26	304.92	423.00	41°18'05"	298.38	N13°08'54"W
C27	154.01	698.08	12°17'01"	153.80	N28°32'38"W
C28	41.45	35.00	67°51'07"	39.07	S36°40'29"E
C29	184.68	50.00	211°36'22"	96.22	N32°12'08"E
C30	54.98	35.00	89°59'52"	49.50	N27°52'50"W
C31	27.55	35.00	45°05'37"	26.84	S74°59'07"W
C32	27.55	35.00	270°11'34"	70.99	S07°20'40"W
C33	27.55	35.00	45°05'37"	26.84	N89°01'17"E
C34	54.98	35.00	90°00'00"	49.50	N82°42'05"E
C35	268.88	372.00	41°18'05"	263.09	N13°08'54"W
C36	54.98	35.00	89°59'52"	49.50	N27°52'50"W
C37	25.96	50.00	29°45'10"	25.87	N71°08'38"E
C38	159.52	50.00	182°47'40"	99.87	S30°12'00"W
C39	40.13	35.00	89°41'07"	37.98	N89°01'17"E
C40	387.74	1147.72	16°21'24"	385.90	N43°26'54"W
C41	65.92	217.77	16°19'39"	65.71	S44°57'56"E
C42	110.84	1327.72	04°48'59"	110.81	N89°01'17"E
C43	99.99	1197.72	04°47'00"	99.98	N48°10'21"W
C44	110.84	1327.72	04°47'00"	110.81	N43°24'54"W
C45	99.99	1197.72	04°47'00"	99.98	N38°36'22"W
C46	99.99	1197.72	04°47'00"	99.98	N29°45'53"W
C47	51.00	1197.72	04°47'00"	51.17	N49°45'53"W
C48	51.17	1197.72	04°46'52"	51.17	N49°45'53"W
C49	33.93	199.91	09°43'29"	33.89	N81°22'10"E
C50	111.47	40.00	89°41'07"	115.79	N89°01'17"E
C51	40.60	50.00	48°31'29"	39.49	S34°44'43"E
C52	84.22	50.00	73°56'11"	59.89	S28°16'38"W
C53	9.65	249.81	8°45'	9.65	N22°55'22"E
C54	99.99	249.81	22°55'27"	99.32	N1°48'02"E
C55	86.82	249.81	19°13'36"	86.19	N43°24'54"W
C56	12.84	249.81	02°46'38"	12.84	N24°44'41"E
C57	54.56	548.00	05°42'24"	54.56	N30°23'41"W
C58	74.99	423.00	10°02'06"	73.99	N28°44'51"W
C59	64.43	548.00	03°48'52"	64.42	N22°31'17"W
C60	117.52	548.00	12°17'14"	117.29	N17°35'20"W
C61	90.71	423.00	12°17'13"	90.54	N17°36'18"W
C62	117.52	548.00	12°17'14"	117.29	N09°19'52"W
C63	90.71	423.00	12°17'13"	90.54	N09°18'05"W
C64	40.45	548.00	04°13'46"	40.44	N02°12'22"E
C65	49.41	423.00	08°41'33"	49.38	N04°11'18"E
C66	96.24	858.06	06°25'35"	95.19	S04°19'17"W
C67	57.76	858.06	03°51'25"	57.75	S02°41'18"E
C68	39.48	50.00	45°13'04"	38.44	N49°39'31"W
C69	59.63	50.00	86°19'35"	58.18	N08°46'48"E
C70	48.58	50.00	96°03'24"	47.51	S88°14'33"E
C71	46.40	175.00	101°11'24"	46.38	N04°11'18"E
C72	19.80	50.00	22°41'41"	19.89	N63°46'59"E
C73	66.38	50.00	76°04'48"	65.81	S68°50'14"E
C74	218.18	175.00	71°28'01"	204.32	N02°46'10"W
C75	156.03	175.00	56°24'01"	153.61	S68°39'38"W
C76	62.34	50.00	21°26'01"	62.38	S03°24'55"W
C77	67.62	50.00	77°43'01"	62.58	N02°46'10"W
C78	19.86	50.00	22°12'26"	19.83	N48°37'41"W
C79	103.78	373.00	15°46'30"	103.45	N02°46'10"W
C80	159.51	373.00	24°30'09"	156.30	N02°46'10"W
C81	5.58	373.00	02°41'27"	5.58	N33°21'02"E
C82	49.92	50.00	74°30'14"	49.53	S23°23'23"E
C83	234.08	180.00	74°30'14"	217.92	S23°23'23"E
C84	191.27	180.00	56°33'02"	187.40	S44°04'19"W
C85	94.50	50.00	108°12'27"	81.18	N67°49'23"E
C86	54.98	35.00	90°00'00"	49.50	N11°44'00"E
C87	17.80	35.00	28°49'02"	17.42	S72°29'21"E
C88	22.52	35.00	38°32'08"	22.14	N74°04'04"E
C89	33.34	1147.72	01°39'51"	33.33	N34°35'56"W
C90	105.08	1147.72	05°14'44"	105.04	N30°12'13"W
C91	35.57	1017.77	02°00'08"	35.57	S29°43'11"W
C92	105.07	1147.72	05°14'43"	105.03	N43°17'58"W
C93	97.58	1147.72	04°52'18"	97.58	N48°21'27"W
C94	46.68	1147.72	02°19'49"	46.67	S19°19'50"W
C95	93.17	1017.77	05°14'42"	93.14	N43°17'58"W
C96	86.53	1017.77	04°52'18"	86.51	N48°21'26"W
C97	41.41	1017.77	02°19'52"	41.41	N19°12'28"E
C98	386.19	1172.72	18°21'24"	384.31	N43°26'42"W
C99	188.19	274.91	67°26'19"	187.19	N32°19'44"E
C100	286.90	598.00	41°18'05"	286.73	N13°08'54"W
C101	204.80	883.06	13°17'41"	204.44	S00°23'14"W
C102	399.14	300.00	76°13'50"	370.55	N20°42'27"W

LINE	LENGTH	BEARING
L1	25.48	N42°17'15"E
L2	14.82	N78°12'19"E
L3	30.75	N51°00'19"E
L4	33.70	N09°45'36"W
L5	47.90	N07°35'05"E
L6	25.38	N24°17'15"E
L7	52.41	S40°26'17"E
L8	67.51	S83°07'24"E
L9	25.00	S32°46'00"E
L10	64.15	N08°12'31"E
L11	25.00	N81°42'40"W
L12	33.70	S09°45'36"E
L13	25.00	N84°14'24"E
L14	43.47	N62°23'59"W
L15	43.47	S82°27'55"E
L16	24.60	N07°34'09"E
L17	67.51	S83°07'24"E
L18	20.48	S88°33'30"E
L19	20.00	S44°37'01"W
L20	20.00	S14°58'11"E
L21	20.00	N30°06'36"E

KEY MAP



THIS PLAT PREPARED BY
B.S.E. CONSULTANTS, INC.
CONSULTING, ENGINEERING, LAND SURVEYING
312 S. Harbor City Blvd., Suite 4, Melbourne, Florida (407) 725-3874

DATE: AUGUST 5, 1999