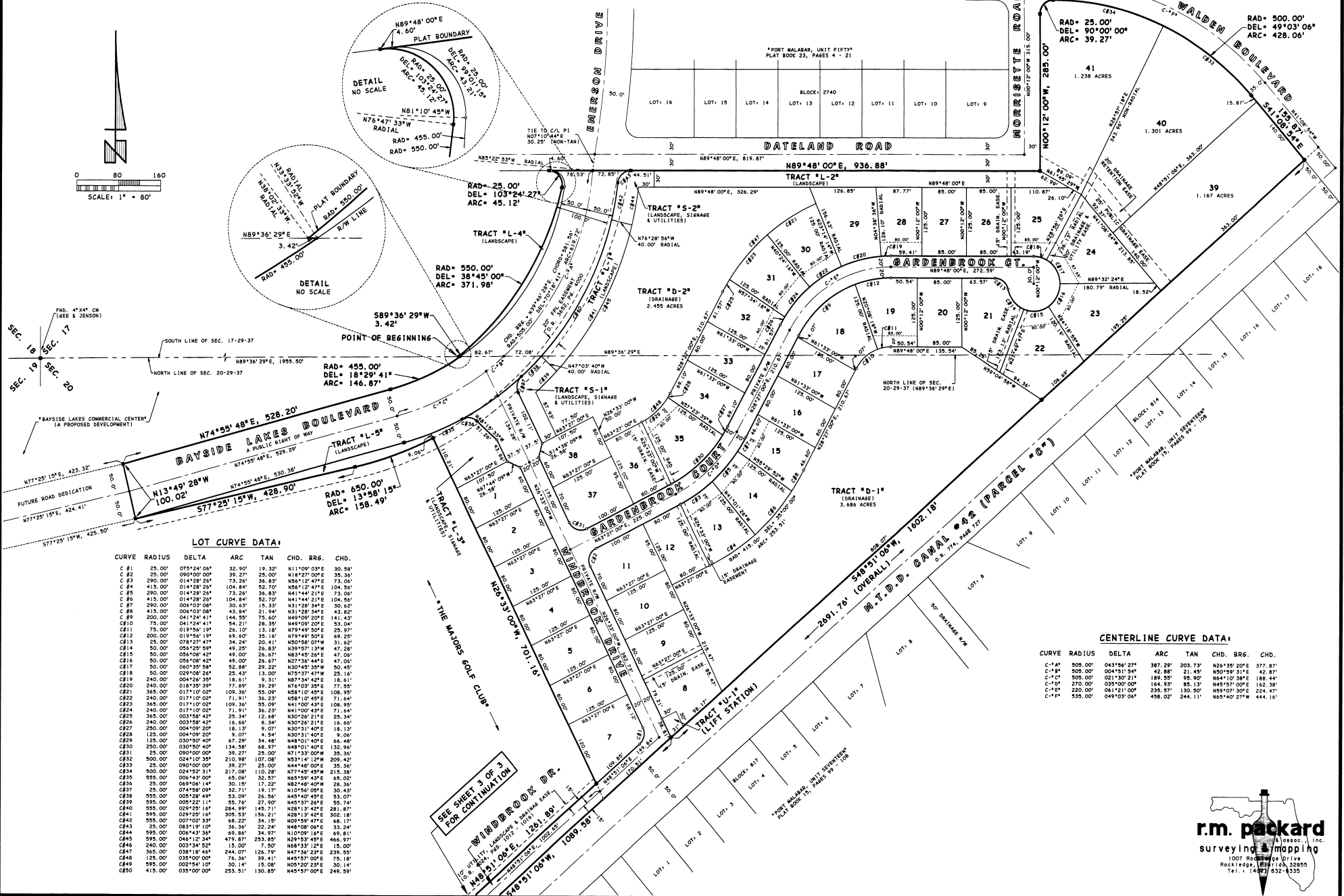
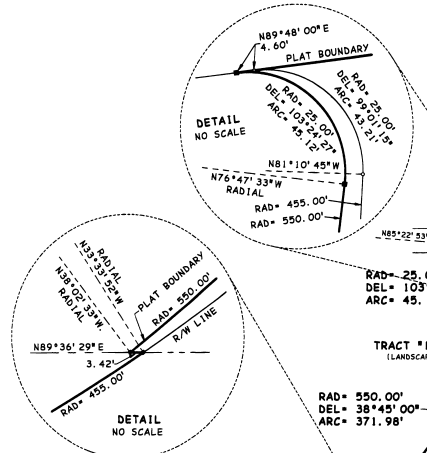
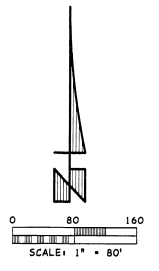


SUMMERFIELD at BAYSIDE LAKES - PHASE 1

PLAT BOOK 45 PAGE 19
 SHEET 2 OF 3
 SEC. 17 & 20, TWP. 29 S., R6E. 37 E.

A SUBDIVISION LYING IN SECTIONS 17 AND 20, TOWNSHIP 29 SOUTH, RANGE 37 EAST, CITY OF PALM BAY, BREVARD COUNTY, FLORIDA,
 BEING A "REPLAT" OF A PORTION OF TRACT "P" OF "PORT MALABAR, UNIT FIFTY" RECORDED IN PLAT BOOK 23, PAGES 4 THRU 21 AND
 A "REPLAT" OF PORTIONS OF "FLORIDA INDIAN RIVER LAND CO. OF SECTION 20-29-37 RECORDED IN PLAT BOOK 1, PAGE 165



LOT CURVE DATA:

CURVE	RADIUS	DELTA	ARC	TAN	CHD.	BRG.	CHD.
C #1	25.00'	075°24'06"	32.90'	19.32'	N11°09'03"E	30.58'	
C #2	25.00'	090°00'00"	39.27'	25.00'	N18°27'00"E	35.36'	
C #3	290.00'	014°28'26"	73.26'	36.83'	N56°12'47"E	73.06'	
C #4	415.00'	014°28'26"	106.84'	52.70'	N56°12'47"E	104.56'	
C #5	290.00'	014°28'26"	73.26'	36.83'	N41°44'21"E	73.06'	
C #6	415.00'	014°28'26"	106.84'	52.70'	N41°44'21"E	104.56'	
C #7	290.00'	006°03'08"	30.63'	15.33'	N31°28'34"E	30.62'	
C #8	415.00'	006°03'08"	43.84'	21.94'	N31°28'34"E	43.82'	
C #9	200.00'	041°24'41"	144.55'	75.60'	N49°09'20"E	141.43'	
C #10	50.00'	029°08'24"	25.43'	13.00'	N79°37'47"E	25.16'	
C #11	75.00'	019°56'19"	26.10'	13.18'	N79°49'50"E	26.97'	
C #12	200.00'	019°56'19"	69.60'	35.16'	N79°49'50"E	69.25'	
C #13	35.00'	078°52'47"	34.24'	30.61'	N50°58'07"E	31.62'	
C #14	50.00'	056°25'59"	49.25'	26.83'	N39°57'13"W	47.28'	
C #15	50.00'	056°25'59"	49.25'	26.83'	N69°45'58"E	47.28'	
C #16	50.00'	056°25'59"	49.25'	26.83'	N42°36'44"E	47.06'	
C #17	50.00'	060°35'58"	52.88'	29.22'	N30°45'35"W	50.45'	
C #18	50.00'	029°08'24"	25.43'	13.00'	N79°37'47"E	25.16'	
C #19	240.00'	004°28'26"	18.61'	9.31'	N87°34'42"E	18.61'	
C #20	240.00'	018°10'02"	71.91'	36.23'	N47°03'59"E	71.94'	
C #21	365.00'	017°10'02"	109.30'	55.09'	N58°10'45"E	108.95'	
C #22	240.00'	018°10'02"	71.91'	36.23'	N58°10'45"E	71.94'	
C #23	365.00'	017°10'02"	109.30'	55.09'	N41°00'43"E	108.95'	
C #24	240.00'	017°10'02"	71.91'	36.23'	N41°00'43"E	71.94'	
C #25	365.00'	003°58'42"	25.34'	12.68'	N30°26'21"E	25.34'	
C #26	240.00'	003°58'42"	16.66'	8.34'	N30°26'21"E	16.66'	
C #27	250.00'	004°09'20"	16.13'	9.07'	N30°31'40"E	16.13'	
C #28	125.00'	004°09'20"	9.07'	4.54'	N30°31'40"E	9.08'	
C #29	125.00'	030°50'40"	67.29'	34.48'	N48°01'40"E	66.48'	
C #30	250.00'	030°50'40"	134.58'	68.97'	N48°01'40"E	132.96'	
C #31	25.00'	090°00'00"	39.27'	25.00'	N71°33'00"W	39.36'	
C #32	500.00'	024°10'35"	210.98'	107.08'	N53°14'17"E	209.42'	
C #33	25.00'	090°00'00"	39.27'	25.00'	N44°48'00"E	35.36'	
C #34	500.00'	024°10'35"	212.08'	110.28'	N77°45'45"E	210.38'	
C #35	555.00'	006°43'00"	65.06'	32.57'	N65°59'43"E	65.02'	
C #36	555.00'	006°43'00"	65.06'	32.57'	N65°59'43"E	65.02'	
C #37	25.00'	074°58'09"	32.71'	19.17'	N10°58'09"E	30.45'	
C #38	555.00'	005°28'49"	53.09'	26.56'	N45°40'45"E	53.07'	
C #39	595.00'	005°22'11"	55.74'	27.90'	N45°37'24"E	55.74'	
C #40	555.00'	029°25'16"	284.99'	145.71'	N28°13'42"E	281.87'	
C #41	595.00'	003°34'52"	305.53'	152.88'	N33°33'21"E	303.18'	
C #42	555.00'	007°02'33"	68.22'	34.15'	N69°59'47"E	68.17'	
C #43	25.00'	083°19'10"	36.38'	22.24'	N48°58'50"E	35.04'	
C #44	595.00'	006°43'36"	69.80'	34.97'	N10°09'16"E	69.81'	
C #45	595.00'	048°12'34"	479.87'	253.85'	N29°53'45"E	466.97'	
C #46	240.00'	033°34'52"	15.00'	7.00'	N33°33'21"E	15.00'	
C #47	365.00'	038°18'46"	244.07'	126.79'	N47°38'23"E	239.50'	
C #48	125.00'	039°00'00"	78.34'	39.16'	N39°00'00"E	78.18'	
C #49	595.00'	002°54'10"	30.14'	15.08'	N05°20'23"E	30.14'	
C #50	415.00'	035°00'00"	253.51'	130.85'	N45°57'00"E	249.59'	

CENTERLINE CURVE DATA:

CURVE	RADIUS	DELTA	ARC	TAN	CHD.	BRG.	CHD.
C-1*	505.00'	043°56'27"	387.23'	203.73'	N62°39'20"E	373.87'	
C-2*	505.00'	004°51'54"	42.88'	21.45'	N50°59'31"E	42.87'	
C-3*	505.00'	021°30'21"	189.59'	95.90'	N64°10'38"E	188.44'	
C-4*	270.00'	025°00'00"	144.93'	85.13'	N45°07'00"E	142.38'	
C-5*	220.00'	061°21'00"	235.57'	130.50'	N59°07'30"E	224.47'	
C-6*	535.00'	040°03'06"	458.02'	244.11'	N69°40'27"W	444.10'	

SEE SHEET 3 OF 3 FOR CONTINUATION

