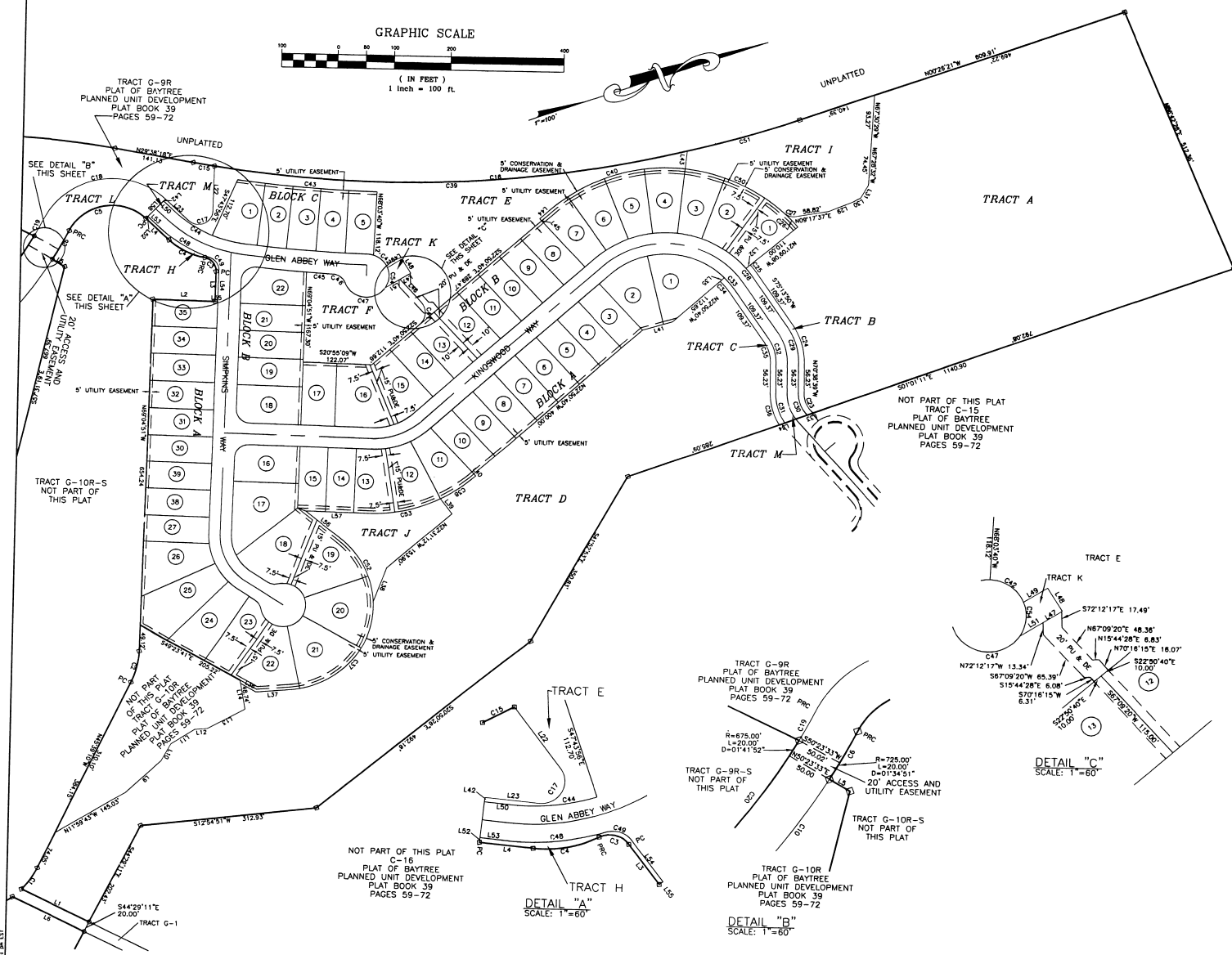
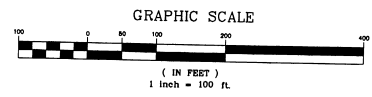


ISLES OF BAYTREE PHASE 1 SECTION 15, TOWNSHIP 26 SOUTH, RANGE 36 EAST BREVARD COUNTY, FLORIDA

PLAT BOOK 45, PAGE 9
SHEET 2 OF 3
SECTION 15, TWP. 26 S., RANGE 36 E.



LINE	LENGTH	BEARING
L1	124.43	S45°49'14"W
L2	110.00	N20°25'09"E
L3	55.82	N89°04'51"W
L4	51.39	S62°02'30"W
L5	25.48	N50°23'33"E
L6	12.45	N45°49'14"E
L7	125.34	N42°30'33"E
L8	54.43	N00°02'17"E
L9	86.17	N24°22'31"W
L10	35.08	N42°30'33"E
L11	49.83	N14°00'25"W
L12	22.52	N19°01'32"E
L13	75.57	N09°28'24"W
L14	55.25	N80°17'12"W
L15	11.59	N22°48'21"W
L16	47.08	N02°30'33"E
L17	31.50	N08°09'34"W
L18	36.95	N12°59'49"E
L19	41.65	N09°04'47"W
L20	34.38	N88°13'50"W
L21	85.00	N47°23'38"W
L22	84.38	S59°04'12"E
L23	57.39	S83°07'39"W
L24	110.00	N83°29'33"E
L25	77.32	N19°57'10"E
L26	41.31	N49°48'35"E
L27	14.80	N87°08'20"E
L28	75.56	N30°14'25"E
L29	44.93	N03°31'08"W
L30	16.76	N08°10'24"W
L31	27.42	N49°04'44"W
L32	10.00	S21°09'08"E
L33	11.97	N01°01'11"W
L34	10.27	N44°54'43"E
L35	10.01	S22°50'40"E
L36	31.35	N48°24'34"E
L37	59.80	N50°16'23"W
L38	66.58	N50°16'23"W
L39	34.48	S72°03'15"W
L40	5.00	S57°02'00"W
L41	55.43	N02°43'56"E
L42	8.03	N70°20'20"E
L43	32.95	S64°35'53"E
L44	25.68	S22°50'40"E
L45	5.00	N70°20'20"E
L46	55.58	S87°02'00"W
L47	22.13	N122°02'07"E
L48	30.00	S122°02'07"E
L49	30.00	S122°02'07"E
L50	28.00	S87°02'00"W
L51	5.00	N144°02'07"E
L52	5.00	N24°17'12"E
L53	28.00	N87°02'39"E
L54	5.00	S89°04'51"E
L55	5.00	S22°50'40"E
L56	81.70	S58°41'53"E
L57	11.47	N02°55'09"E
L58	50.03	S26°11'14"E

CURVE	RADIUS	LENGTH	CHORD	BEARING	DELTA
C1	150.00	48.93	24.68	48.71 N36°18'21"W	184°12'11"
C2	150.00	61.34	31.11	60.91 N57°21'58"W	232°50'50"
C3	25.00	35.32	21.33	32.46 S07°28'37"W	80°27'04"
C4	125.00	72.34	37.22	71.34 N48°32'32"E	370°29'41"
C5	85.00	159.63	118.15	137.19 S09°19'32"W	107°38'14"
C6	725.00	61.61	30.82	61.58 N42°02'31"E	04°52'08"
C7	150.00	374.70	449.92	284.80 N42°02'31"E	04°52'08"
C8	150.00	89.43	35.35	88.81 N48°07'10"W	263°11'13"
C9	175.00	49.62	24.47	48.48 S44°20'00"E	132°55'07"
C10	875.00	174.34	87.66	173.85 S01°50'40"W	88°05'52"
C11	150.00	236.64	145.10	208.58 S01°50'40"W	88°05'52"
C12	150.00	289.65	210.97	244.50 S08°47'11"E	109°10'30"
C13	1225.00	960.64	498.86	944.83 S19°00'29"E	38°05'34"
C14	1425.00	136.19	376.50	728.03 S14°50'17"W	29°36'01"
C15	2075.00	36.12	18.06	35.12 N02°06'35"E	01°03'09"
C16	2075.00	1089.27	857.50	1076.81 N14°35'58"E	30°04'39"
C17	25.00	57.89	56.43	45.71 N02°38'38"W	132°12'30"
C18	135.00	223.54	184.47	217.83 S09°19'32"W	107°38'14"
C19	675.00	37.36	18.60	37.35 N42°02'31"E	02°10'16"
C20	725.00	165.76	83.24	165.40 N33°02'37"W	1308°00"
C21	100.00	80.96	31.41	80.93 S43°58'16"W	34°32'20"
C22	420.00	78.08	39.14	77.95 N86°01'16"W	34°32'20"
C23	45.00	40.00	21.43	36.70 N87°53'33"E	50°55'25"
C24	150.00	72.43	39.80	78.28 N87°42'22"W	34°07'31"
C25	195.00	21.83	10.93	21.82 S72°02'21"W	05°22'36"
C26	506.00	35.44	17.74	35.42 S68°41'48"W	06°38'08"
C27	25.00	23.09	12.44	23.09 N42°02'31"E	05°22'36"
C28	186.00	20.72	10.37	20.71 S72°02'21"W	05°22'36"
C29	100.00	71.47	35.63	70.92 N87°42'22"W	34°07'31"
C30	55.00	43.15	22.59	43.08 N87°42'22"W	109°10'30"
C31	95.00	56.89	29.33	56.04 S87°47'57"E	34°18'36"
C32	60.00	47.65	24.50	45.99 N87°42'22"W	34°07'31"
C33	148.00	27.95	13.97	27.91 S88°42'12"W	11°03'16"
C34	136.00	26.24	13.16	26.20 N87°42'22"W	34°07'31"
C35	70.00	41.89	21.48	41.08 N87°42'22"W	32°23'27"
C36	105.00	60.40	31.06	59.57 S88°42'12"W	34°07'31"
C37	160.00	248.77	155.50	223.03 N28°28'16"W	88°21'58"
C38	265.00	70.99	35.71	70.76 N19°10'11"W	152°00'58"
C39	2075.00	843.50	427.65	831.70 N19°10'11"W	152°00'58"
C40	308.00	257.86	137.03	250.12 S01°18'41"W	48°14'43"
C41	50.00	147.12	72.56	147.12 N19°10'11"W	231°22'28"
C42	40.00	27.59	14.37	27.05 N87°50'40"W	90°00'00"
C43	2093.50	248.33	122.81	245.19 N28°49'53"E	08°42'51"
C44	220.00	83.07	43.74	82.56 N02°04'41"E	01°11'59"
C45	2250.00	46.78	23.59	46.78 N01°00'22"E	241°14'32"
C46	25.00	29.07	16.43	27.48 S59°45'40"W	86°37'21"
C47	35.65	68.68	82.30	71.44 N02°04'41"E	01°11'59"
C48	280.00	107.15	54.35	106.40 N01°00'22"E	128°33'08"
C49	25.00	31.16	17.97	29.18 S72°12'59"W	71°24'19"
C50	309.00	196.60	101.83	193.24 N02°55'09"E	232°12'59"
C51	2075.00	207.65	103.91	207.57 S42°48'24"W	38°48'43"
C52	160.00	133.15	70.70	129.34 S82°32'19"W	47°40'51"
C53	265.00	131.42	67.09	130.08 N62°52'43"E	28°24'51"
C54	40.00	39.07	21.25	37.54 N62°28'38"W	89°37'00"

THIS PLAT PREPARED BY
B.S.E. CONSULTANTS, INC.
CONSULTING, ENGINEERING, LAND SURVEYING
312 S. Harbor City Blvd., Suite 4, Melbourne, Florida (407) 725-3674
DATE: 4/8/99