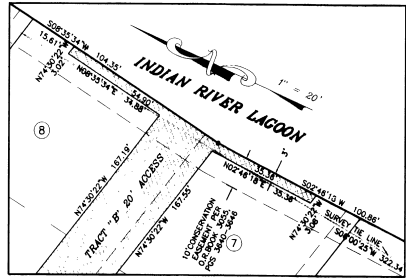


45-7

Portofino Bay

SECTION 18 & 19, TOWNSHIP 26 SOUTH, RANGE 37 EAST
BREVARD COUNTY, FLORIDA

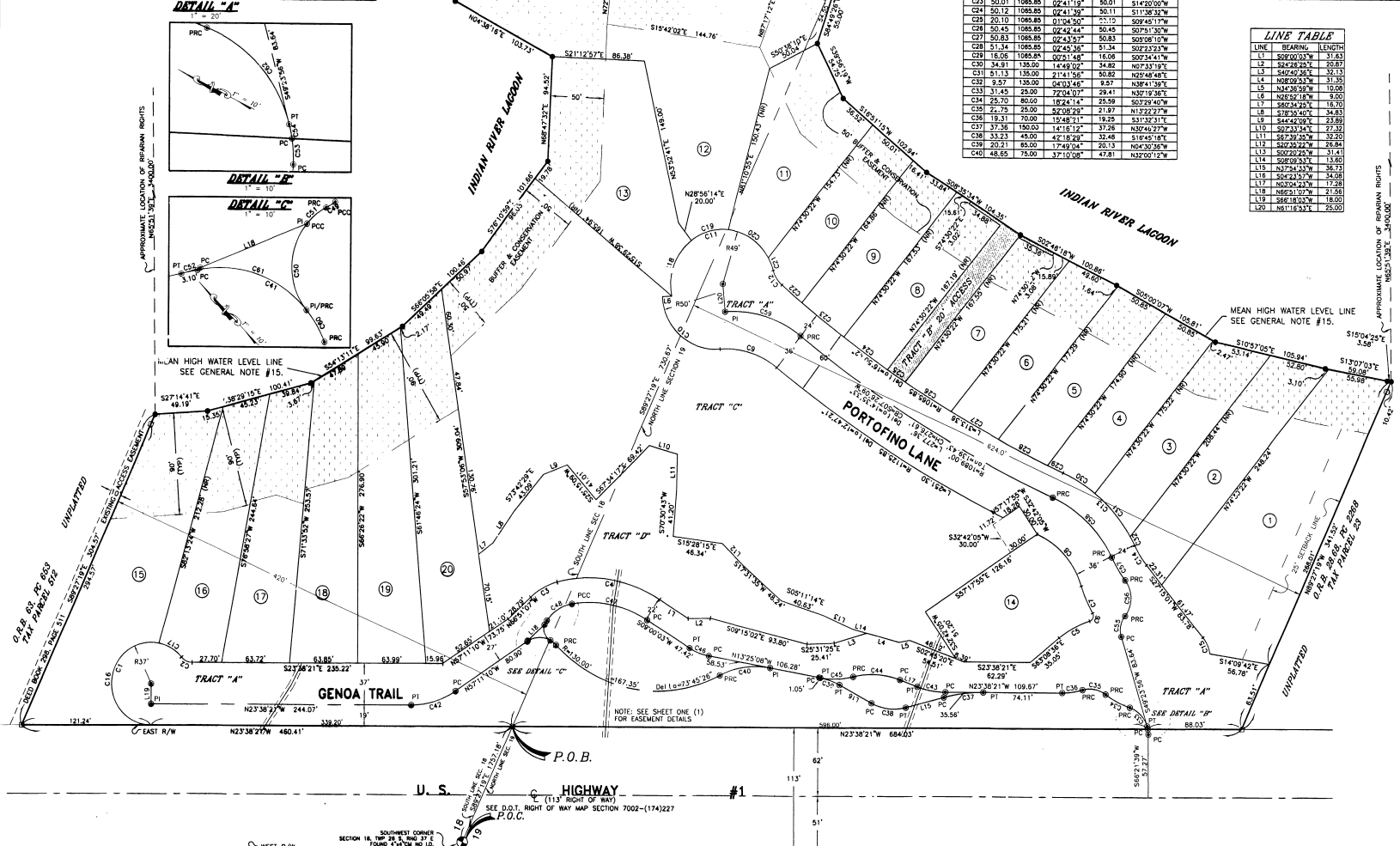


15. THE MEAN HIGH WATER LEVEL LINE HAS BEEN ESTABLISHED BY OTHERS AND IS DEPICTED IN MEAN HIGH WATER SURVEY FILE NUMBER 1206, DATED 12/28/94. THIS SURVEYOR USED THE APPROVED HORIZONTAL AND VERTICAL DATA TO RETRACE AND RESET MISSING MARKERS IN ORDER TO REESTABLISH THIS PREVIOUSLY APPROVED LINE. NO APPRECIABLE DIFFERENCE IN THE PHYSICAL LOCATION OF THIS LINE WAS NOTED AS OF THE DATE OF SURVEY.

CURVE TABLE				
CURVE LENGTH	RADIUS	CENTRAL ANGLE	CHORD	BEARING
C1	148.88	37.00	250.1273	87.01
C2	11.39	13.00	20.1299	1.03
C3	28.54	57.00	28.4732	28.34
C4	100.21	122.00	47.0338	37.41
C5	32.73	65.00	21.3318	32.34
C6	8.88	5.00	10.14308	7.78
C7	17.51	175.00	08.0130	07.49
C8	63.77	75.00	48.4255	41.88
C9	58.88	75.00	43.2202	35.52
C10	80.19	80.00	31.5048	15.84
C11	152.28	49.00	178.0277	97.99
C12	15.87	28.00	34.3150	18.43
C13	35.81	35.00	40.2445	35.83
C14	26.48	87.00	13.2804	30.41
C15	18.35	31.00	30.1329	18.16
C16	123.83	37.00	191.2804	73.63
C17	25.04	37.00	38.0455	24.58
C18	55.99	49.00	65.2821	53.00
C19	37.12	49.00	43.2473	35.24
C20	46.64	49.00	54.4207	44.90
C21	12.92	49.00	14.3821	12.49
C22	24.44	108.85	01.1838	24.44
C23	50.01	108.85	02.4119	50.01
C24	50.12	108.85	02.4139	50.11
C25	50.10	108.85	01.2430	50.10
C26	50.45	108.85	02.4244	50.45
C27	50.83	108.85	02.4377	50.83
C28	51.14	108.85	02.4538	51.14
C29	18.06	108.85	00.2148	18.06
C30	34.91	135.00	14.4902	34.82
C31	61.17	135.00	21.4156	60.82
C32	9.57	135.00	04.0345	9.57
C33	21.45	25.00	22.0407	21.41
C34	25.70	80.00	18.2414	25.59
C35	21.75	25.00	52.0829	21.97
C36	19.31	70.00	19.4871	19.29
C37	17.26	150.00	14.1812	17.26
C38	33.23	45.00	42.1829	32.46
C39	20.21	65.00	17.4904	20.13
C40	48.65	75.00	32.1008	47.81

CURVE TABLE				
CURVE LENGTH	RADIUS	CENTRAL ANGLE	CHORD	BEARING
C41	28.45	21.00	80.2120	27.10
C42	43.91	75.00	33.5249	43.99
C43	28.92	75.00	20.3358	26.78
C44	44.86	75.00	34.0711	44.01
C45	31.12	75.00	23.4277	30.90
C46	19.56	50.00	22.2511	19.44
C47	73.63	100.00	42.1117	71.98
C48	28.97	35.00	43.3914	28.93
C49	1.93	2.00	04.0000	1.93
C50	21.43	15.00	102.1820	18.89
C51	4.62	15.00	10.2348	4.62
C52	3.71	2.00	09.3957	3.71
C53	4.76	25.00	10.5220	4.75
C54	2.64	25.00	00.2023	2.64
C55	20.19	21.00	85.0051	19.42
C56	34.52	26.00	70.0359	32.04
C57	23.85	11.00	97.9131	23.80
C58	78.64	11.00	40.3537	77.01
C59	75.84	100.00	43.2702	74.03
C60	6.88	21.00	18.1430	6.88
C61	22.77	21.00	62.0717	21.87
C62	28.89	25.00	61.0046	28.44

LINE TABLE		
LINE #	BEARING	LENGTH
L1	S00°00'00"W	31.83
L2	S42°46'25"E	20.87
L3	S05°45'25"E	25.43
L4	N08°05'53"W	37.95
L5	S00°00'00"W	10.68
L6	N28°52'18"W	9.00
L7	S08°34'25"E	16.33
L8	S44°42'09"E	23.89
L9	S02°33'14"E	27.82
L10	S02°33'14"E	27.82
L11	S02°33'14"E	32.20
L12	S02°33'14"E	28.84
L13	S02°33'14"E	31.41
L14	S08°09'53"E	13.80
L15	S74°24'53"E	36.51
L16	S04°23'27"E	34.28
L17	N03°23'23"E	17.81
L18	N06°31'07"E	21.58
L19	S08°18'03"E	18.00
L20	N01°15'34"E	25.00



THIS PLAT PREPARED BY
B.S.E. CONSULTANTS, INC.
CONSULTING ENGINEERS, LAND SURVEYING
212 S. Harbor City Blvd., Suite 4, Melbourne, Florida 32901-7814
DRAWING NO. 10222301 DATE: 3/3/99 REVISED: 4/21/99

