

DRAWING NUMBER
44-94

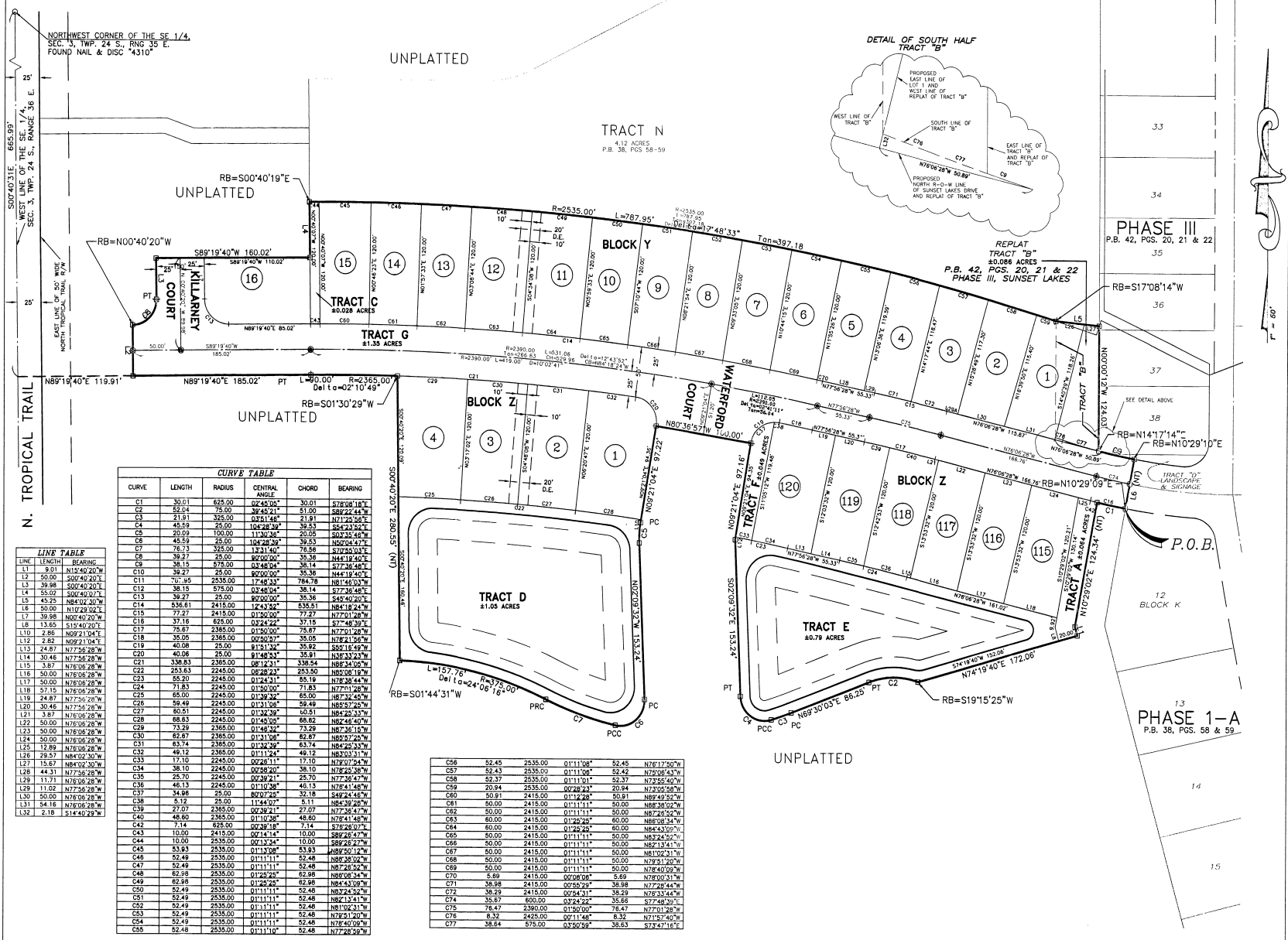
DRAWING NUMBER

DRAWING NUMBER

DRAWING NUMBER

SUNSET LAKES, PHASE V - AND A REPLAT OF TRACT B, SUNSET LAKES, PHASE III (P.B. 42, PGS. 20-22) SECTION 3, TOWNSHIP 24 SOUTH, RANGE 36 EAST BREVARD COUNTY, FLORIDA

PLAT BOOK 44 PAGE 94
SHEET 2 OF 2
SECTION 3, TWP. 24 S., RANGE 36 E.



CURVE TABLE

CURVE	LENGTH	RADIUS	CENTRAL ANGLE	CHORD	BEARING
C1	30.01	625.00	02°45'00"	30.01	S78°08'18"E
C2	62.04	78.00	30°24'11"	61.00	S82°22'44"E
C3	21.91	325.00	03°41'48"	21.91	S82°22'44"E
C4	45.59	25.00	104°28'30"	39.53	S84°23'22"E
C5	20.09	100.00	11°34'30"	20.09	S72°34'48"E
C6	45.59	25.00	104°28'30"	39.53	S82°04'47"E
C7	26.73	325.00	13°31'40"	26.73	S72°34'48"E
C8	39.29	25.00	80°00'00"	35.36	N41°19'40"E
C9	36.15	575.00	03°48'04"	36.14	S77°34'48"E
C10	39.27	25.00	117°40'30"	35.36	N41°19'40"E
C11	73.35	2535.00	17°43'30"	74.78	N41°19'40"E
C12	36.15	575.00	03°48'04"	36.14	S77°34'48"E
C13	39.27	25.00	117°40'30"	35.36	S42°40'20"E
C14	536.61	2415.00	124°33'00"	536.61	N81°19'24"E
C15	77.27	2415.00	01°50'00"	77.27	N77°19'24"E
C16	37.16	625.00	03°24'22"	37.16	S7°48'39"E
C17	75.67	2385.00	01°50'00"	75.67	N77°19'24"E
C18	35.05	2385.00	02°02'57"	35.05	N78°11'56"E
C19	40.08	25.00	01°21'30"	35.82	S82°11'49"E
C20	40.08	25.00	01°21'30"	35.81	N83°21'24"E
C21	338.83	2385.00	08°12'31"	338.84	N83°40'05"E
C22	253.63	2245.00	08°28'24"	253.50	N83°08'19"E
C23	65.20	2245.00	01°24'31"	65.19	N78°24'44"E
C24	71.83	2245.00	01°50'00"	71.83	N77°19'24"E
C25	65.00	2245.00	01°28'30"	65.00	N87°34'45"E
C26	59.49	2245.00	01°19'24"	59.49	N85°21'24"E
C27	60.51	2245.00	01°32'30"	60.51	N84°25'33"E
C28	69.83	2245.00	01°45'00"	69.82	N84°40'40"E
C29	73.29	2385.00	01°45'00"	73.29	N84°25'15"E
C30	62.67	2385.00	01°31'08"	62.67	N85°27'25"E
C31	63.74	2385.00	01°24'30"	63.74	N84°25'33"E
C32	49.12	2385.00	01°11'24"	49.12	N83°03'31"E
C33	17.10	2245.00	00°28'11"	17.10	N79°07'54"E
C34	38.10	2245.00	00°28'20"	38.10	N78°26'38"E
C35	25.70	2245.00	00°29'11"	25.70	N77°54'19"E
C36	46.13	2245.00	01°10'38"	46.13	N78°41'48"E
C37	34.98	2245.00	00°21'30"	34.98	S44°24'48"E
C38	5.12	25.00	114°40'30"	5.11	N84°30'28"E
C39	27.07	2385.00	00°38'21"	27.07	N77°30'47"E
C40	48.63	2385.00	00°11'28"	48.60	N78°41'48"E
C41	4.14	825.00	01°14'30"	4.14	S60°45'00"E
C42	10.00	2415.00	00°14'14"	10.00	S88°28'47"E
C43	10.00	2335.00	00°21'30"	10.00	S88°28'27"E
C44	53.93	2335.00	01°11'00"	53.93	N88°00'12"E
C45	56.48	2335.00	01°11'11"	56.48	N88°38'02"E
C46	52.48	2335.00	01°11'11"	52.48	N88°24'30"E
C47	52.48	2335.00	01°11'11"	52.48	N88°24'30"E
C48	62.98	2335.00	01°23'20"	62.98	N88°00'34"E
C49	62.98	2335.00	01°23'20"	62.98	N84°43'09"E
C50	52.48	2335.00	01°11'11"	52.48	N88°24'30"E
C51	52.48	2335.00	01°11'11"	52.48	N87°13'41"E
C52	52.48	2335.00	01°11'11"	52.48	N81°09'31"E
C53	52.48	2335.00	01°11'11"	52.48	N81°11'20"E
C54	52.48	2335.00	01°11'11"	52.48	N78°40'09"E
C55	52.48	2335.00	01°11'11"	52.48	N77°28'50"E

LINE TABLE

LINE	LENGTH	BEARING
L1	8.01	N15°40'00"E
L2	50.00	S00°40'20"W
L3	29.98	S00°40'20"W
L4	53.02	S00°40'20"W
L5	45.25	N84°02'30"W
L6	39.98	N00°40'00"W
L7	13.65	S15°40'20"E
L8	2.85	N09°21'04"E
L9	2.82	N09°21'04"E
L10	24.87	N77°26'28"W
L11	30.48	N77°26'28"W
L12	3.87	N76°08'28"W
L13	50.00	N76°08'28"W
L14	50.00	N76°08'28"W
L15	57.15	N76°08'28"W
L16	30.48	N77°26'28"W
L17	59.49	N77°26'28"W
L18	3.87	N76°08'28"W
L19	24.87	N77°26'28"W
L20	30.48	N77°26'28"W
L21	3.87	N76°08'28"W
L22	50.00	N76°08'28"W
L23	50.00	N76°08'28"W
L24	50.00	N76°08'28"W
L25	12.89	N76°08'28"W
L26	29.57	N84°02'30"W
L27	15.67	N84°02'30"W
L28	44.31	N77°26'28"W
L29	11.71	N76°08'28"W
L30	11.02	N77°26'28"W
L31	50.00	N76°08'28"W
L32	1.18	N76°08'28"W
L33	2.18	S14°40'00"E

C56	52.48	2335.00	01°11'08"	52.48	N76°17'50"W
C57	52.43	2335.00	01°11'08"	52.42	N78°06'43"W
C58	52.37	2335.00	01°11'01"	52.37	N78°54'40"W
C59	20.94	2335.00	00°28'23"	20.94	N73°05'58"W
C60	50.61	2415.00	01°12'28"	50.61	N89°49'52"W
C61	50.00	2415.00	01°11'11"	50.00	N88°30'09"W
C62	50.00	2415.00	01°11'11"	50.00	N87°26'52"W
C63	60.00	2415.00	01°22'20"	60.00	N88°08'34"W
C64	60.00	2415.00	01°22'20"	60.00	N88°40'09"W
C65	50.00	2415.00	01°11'11"	50.00	N83°24'52"W
C66	50.00	2415.00	01°11'11"	50.00	N82°13'24"W
C67	60.00	2415.00	01°11'11"	60.00	N79°03'15"W
C68	50.00	2415.00	01°11'11"	50.00	N79°21'20"W
C69	50.00	2415.00	01°11'11"	50.00	N78°40'09"W
C70	5.69	2415.00	00°00'00"	5.69	N78°40'09"W
C71	38.98	2415.00	00°52'29"	38.98	N77°28'44"W
C72	38.98	2415.00	00°24'31"	38.29	N76°33'44"W
C74	35.67	600.00	03°42'22"	35.66	S77°46'20"E
C75	78.47	2390.00	01°50'00"	78.47	N77°01'28"W
C76	8.37	600.00	00°11'48"	8.32	N71°47'40"W
C77	38.64	575.00	03°30'00"	38.63	S73°47'16"E

THIS PLAT PREPARED BY
B.S.E. CONSULTANTS, INC.
CONSULTING, ENGINEERING, LAND SURVEYING
312 S. Harbor City Blvd., Suite 4, Melbourne, Florida (407) 725-3874
DATE: 8/3/98

REVISION DATE: 4/19/99 - COUNTY COMMENTS
REVISION DATE: 3/29/99 - COUNTY COMMENTS
REVISION DATE: 2/17/99 - CITY & COUNTY COMMENTS
REVISION DATE: 12/6/98 - COUNTY COMMENTS
REVISION DATE: 11/4/98 - COUNTY COMMENTS

