

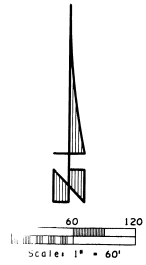
COURTYARDS AT SANDY PINES PRESERVE. PHASE 1

A SUBDIVISION WITHIN SANDY PINES DRIVE LYING IN SECTION 27, TOWNSHIP 28 SOUTH, RANGE 37 EAST, CITY OF PALM BAY, BREVARD COUNTY, FLORIDA.
A PORTION OF WHICH IS A "REPLAT" OF TRACT "N" OF "PORT MALABAR, UNIT FIFTY NINE" RECORDED IN PLAT BOOK 32, PAGES 78 THRU 88

PLAT BOOK 44 PAGE 84

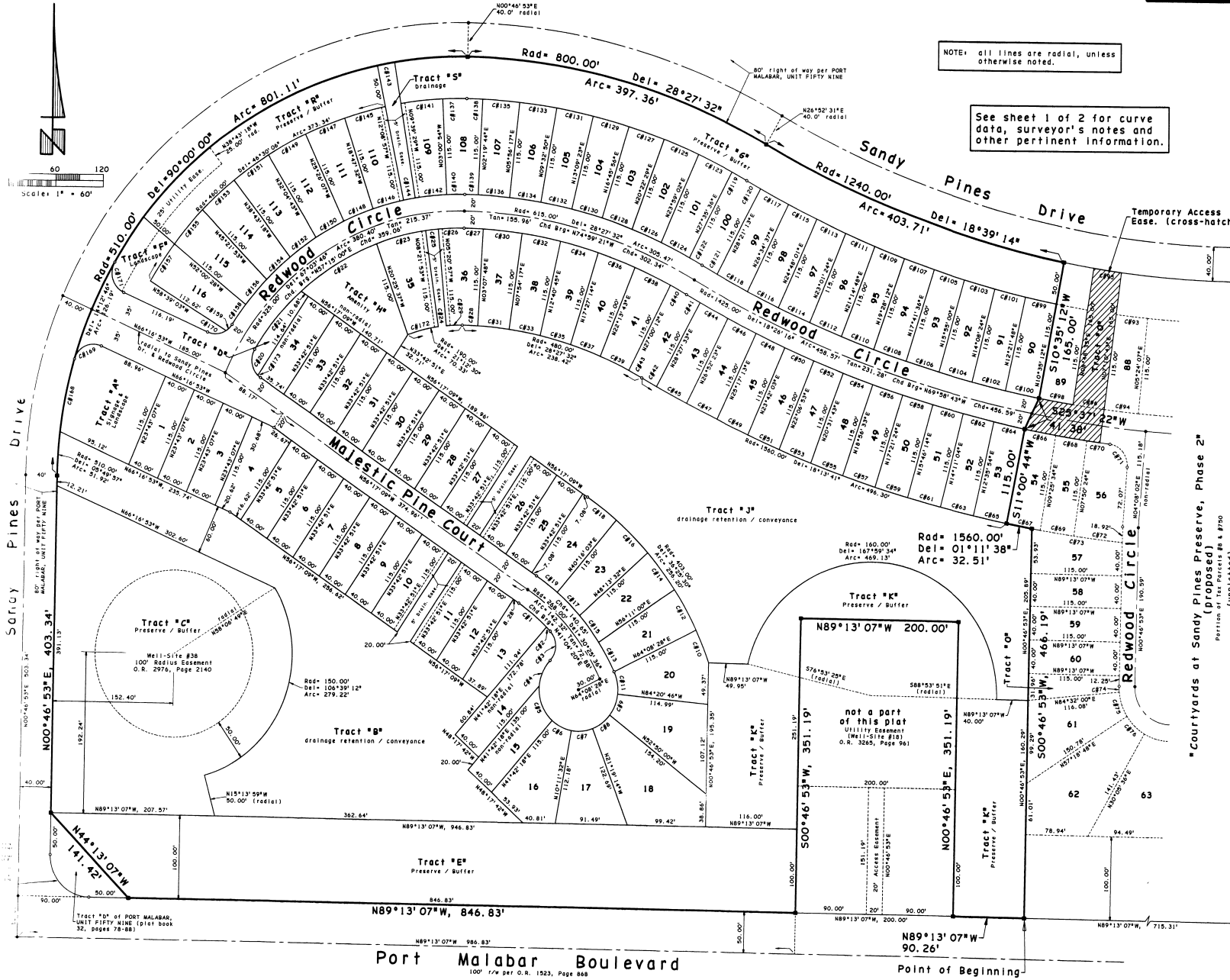
SHEET 2 OF 2

SEC. 27, TWP. 28 S., R.6E. 37 E.



NOTE: all lines are radial, unless otherwise noted.

See sheet 1 of 2 for curve data, surveyor's notes and other pertinent information.



- LEGEND OF ABBREVIATIONS:
- Rad = Radius
 - Del = Delta
 - Arc = Length
 - Chd = Chord
 - Brg = Bearing
 - Tan = Tangent
 - Ease = Easement

"Courtyards at Sandy Pines Preserve, Phase 2" (proposed) (unplatted)
Portion of Tax Parcel # & #750

Point of Commencement
East 1/4 corner of Sec. 27-28-37
Pkg. 304 Pipe (top 10)

East line of SE 1/4 of Section 27-28-37
500'00" S 2°E, 330.30'

Tract *k* Preserve / Buffer
N89°13'07"W 200.00'

not a part of this plat
Utility Easement
Well-Site # 831
O.R. 3265, Page 961

Tract *k* Preserve / Buffer
N89°13'07"W 466.19'

Tract *k* Preserve / Buffer
N89°13'07"W 351.19'

Tract *k* Preserve / Buffer
N89°13'07"W 351.19'

Tract *c* Preserve / Buffer
Well-Site # 836
100' Radius Easement
O.R. 2976, Page 2140

Tract *d* of PORT MALABAR,
UNIT FIFTY NINE (plat book
32, pages 78-88)

Port Malabar Boulevard
100' r/w per O.R. 1523, Page 868

Point of Beginning
N89°13'07"W 90.26'