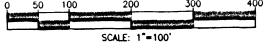


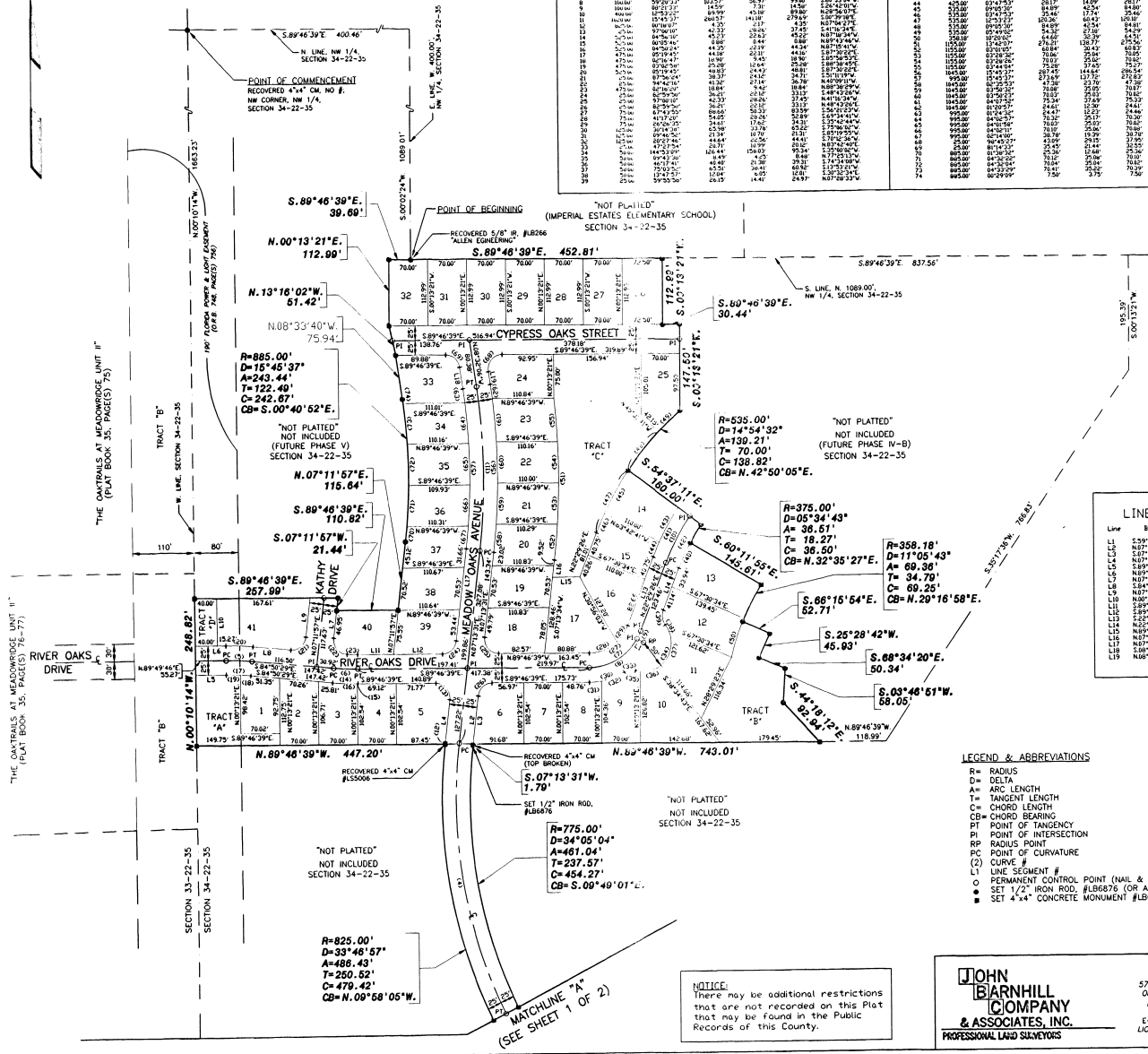
44-81

THE OAKTRAILS AT MEADOWRIDGE PHASE IV-A

A PORTION OF SECTION 34, TOWNSHIP 22 SOUTH, RANGE 35 EAST
CITY OF TITUSVILLE, BREVARD COUNTY, FLORIDA



N



CURVE TABLES

NO.	RADIUS	DELTA	ARC	TANGENT	CHORD	CHORD BEARING
1	100.00	18.01	31.42	16.74	31.42	S.18.01°E.
2	150.00	12.60	47.12	25.71	47.12	S.12.60°E.
3	200.00	9.00	62.83	34.64	62.83	S.9.00°E.
4	250.00	7.16	78.54	43.57	78.54	S.7.16°E.
5	300.00	5.99	94.25	52.50	94.25	S.5.99°E.
6	350.00	5.14	109.96	61.43	109.96	S.5.14°E.
7	400.00	4.50	125.67	70.36	125.67	S.4.50°E.
8	450.00	4.00	141.38	79.29	141.38	S.4.00°E.
9	500.00	3.60	157.09	88.22	157.09	S.3.60°E.
10	550.00	3.27	172.80	97.15	172.80	S.3.27°E.
11	600.00	2.98	188.51	106.08	188.51	S.2.98°E.
12	650.00	2.72	204.22	115.01	204.22	S.2.72°E.
13	700.00	2.49	219.93	123.94	219.93	S.2.49°E.
14	750.00	2.28	235.64	132.87	235.64	S.2.28°E.
15	800.00	2.09	251.35	141.80	251.35	S.2.09°E.
16	850.00	1.92	267.06	150.73	267.06	S.1.92°E.
17	900.00	1.77	282.77	159.66	282.77	S.1.77°E.
18	950.00	1.63	298.48	168.59	298.48	S.1.63°E.
19	1000.00	1.50	314.19	177.52	314.19	S.1.50°E.
20	1050.00	1.38	329.90	186.45	329.90	S.1.38°E.
21	1100.00	1.27	345.61	195.38	345.61	S.1.27°E.
22	1150.00	1.17	361.32	204.31	361.32	S.1.17°E.
23	1200.00	1.08	377.03	213.24	377.03	S.1.08°E.
24	1250.00	1.00	392.74	222.17	392.74	S.1.00°E.
25	1300.00	0.92	408.45	231.10	408.45	S.0.92°E.
26	1350.00	0.85	424.16	240.03	424.16	S.0.85°E.
27	1400.00	0.78	439.87	248.96	439.87	S.0.78°E.
28	1450.00	0.72	455.58	257.89	455.58	S.0.72°E.
29	1500.00	0.66	471.29	266.82	471.29	S.0.66°E.
30	1550.00	0.61	487.00	275.75	487.00	S.0.61°E.
31	1600.00	0.56	502.71	284.68	502.71	S.0.56°E.
32	1650.00	0.52	518.42	293.61	518.42	S.0.52°E.
33	1700.00	0.48	534.13	302.54	534.13	S.0.48°E.
34	1750.00	0.44	549.84	311.47	549.84	S.0.44°E.
35	1800.00	0.41	565.55	320.40	565.55	S.0.41°E.
36	1850.00	0.38	581.26	329.33	581.26	S.0.38°E.
37	1900.00	0.35	596.97	338.26	596.97	S.0.35°E.
38	1950.00	0.33	612.68	347.19	612.68	S.0.33°E.
39	2000.00	0.30	628.39	356.12	628.39	S.0.30°E.
40	2050.00	0.28	644.10	365.05	644.10	S.0.28°E.
41	2100.00	0.26	659.81	373.98	659.81	S.0.26°E.

LINE TABLE

Line	Bearing	Distance
L1	S.29°07'32"E.	13.64'
L2	N.87°12'32"E.	86.99'
L3	S.67°13'31"W.	81.19'
L4	N.82°45'42"E.	25.70'
L5	S.89°49'46"W.	55.27'
L6	N.82°45'42"E.	68.29'
L7	N.87°12'32"E.	68.29'
L8	N.87°12'32"E.	68.29'
L9	N.87°12'32"E.	68.29'
L10	N.87°12'32"E.	68.29'
L11	S.89°49'46"W.	86.99'
L12	N.82°45'42"E.	86.99'
L13	N.87°12'32"E.	86.99'
L14	N.82°45'42"E.	75.88'
L15	N.89°49'46"W.	68.89'
L16	N.87°12'32"E.	25.62'
L17	N.87°12'32"E.	25.62'
L18	N.87°12'32"E.	25.62'
L19	N.87°12'32"E.	25.62'

LEGEND & ABBREVIATIONS

- R= RADIUS
- D= DELTA
- A= ARC LENGTH
- T= TANGENT LENGTH
- C= CHORD LENGTH
- CB= CHORD BEARING
- PT= POINT OF TANGENCY
- PI= POINT OF INTERSECTION
- RP= RADIUS POINT
- PC= POINT OF CURVATURE
- (2)= CURVE #
- L1= LINE SEGMENT #
- PERMANENT CONTROL POINT (NAIL & DISK, #LB6876)
- SET 1/2" IRON ROD, #LB6875 (OR AS NOTED)
- SET 4"x4" CONCRETE MONUMENT #LB6876 (OR AS NOTED)

JOHN BARNHILL COMPANY & ASSOCIATES, INC.
PROFESSIONAL LAND SURVEYORS

5734 OLD CHENEY HIGHWAY
ORLANDO, FLORIDA 32807
PHONE (407) 275-6521
FAX (407) 275-3997
E-MAIL JACBS44@AOL.COM
LICENSED BUSINESS #0876

NOTICE: There may be additional restrictions that are not recorded on this Plat that may be found in the Public Records of this County.

MATCHLINE "A" (SEE SHEET 1 OF 2)