

UNPLATTED NUMBER  
44-63

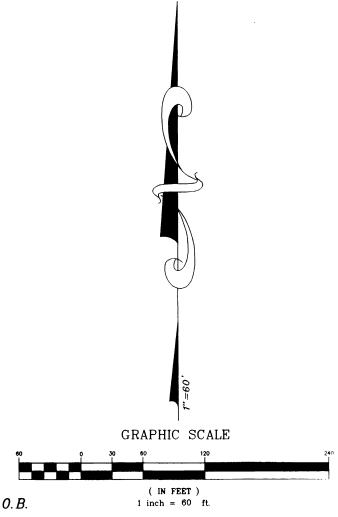
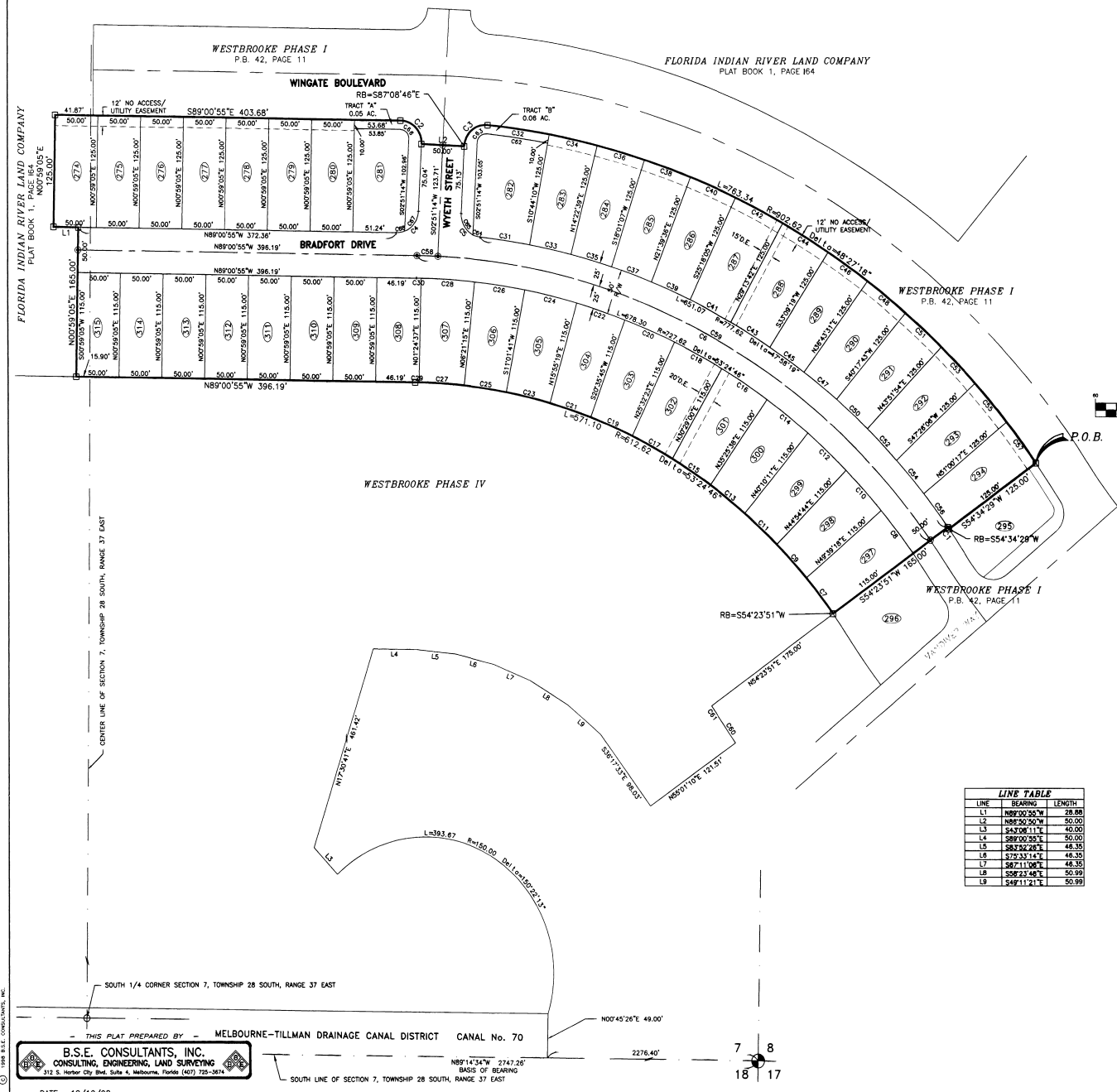
DRAWING NUMBER

DRAWING NUMBER

DRAWING NUMBER

**- WESTBROOKE PHASE V -**  
SECTION 7, TOWNSHIP 28 SOUTH, RANGE 37 EAST  
WEST MELBOURNE, BREVARD COUNTY, FLORIDA

PLAT BOOK 44 PAGE 63  
SHEET 2 OF 2  
SECTION 7 TWP. 28 S., RANGE 37 E.



CURVE TABLE				
CURVE	LENGTH	RADIUS	CENTRAL ANGLE	CHORD BEARING
C1	2.41	777.62	0°10'38"	2.41 N30°30'50"W
C2	40.09	25.00	81°52'09"	35.93 N43°04'51"W
C3	40.89	25.00	83°19'58"	36.35 S49°29'15"W
C4	38.45	25.00	86°29'11"	34.77 N46°50'00"W
C5	37.71	25.00	86°25'42"	34.24 S40°21'37"E
C6	701.61	752.62	52°24'46"	678.48 N62°18'34"W
C7	50.71	612.62	0°44'33"	50.89 N37°58'24"W
C8	60.23	727.62	0°44'33"	60.21 N37°58'24"W
C9	50.71	612.62	0°44'33"	50.89 N42°42'59"W
C10	60.23	727.62	0°44'33"	60.21 N42°42'59"W
C11	50.71	612.62	0°44'33"	50.89 N47°27'32"W
C12	60.23	727.62	0°44'33"	60.21 N47°27'32"W
C13	50.71	612.62	0°44'33"	50.89 N52°12'05"W
C14	60.23	727.62	0°44'33"	60.21 N52°12'05"W
C15	52.86	612.62	0°45'38"	52.84 N57°02'41"W
C16	62.78	727.62	0°45'38"	62.76 N57°02'41"W
C17	52.86	612.62	0°45'38"	52.84 N61°59'19"W
C18	62.78	727.62	0°45'38"	62.76 N61°59'19"W
C19	52.86	612.62	0°45'38"	52.84 N66°55'56"W
C20	62.78	727.62	0°45'38"	62.76 N66°55'56"W
C21	48.98	612.62	0°46'28"	48.96 N71°44'28"W
C22	58.36	727.62	0°46'28"	58.34 N71°44'28"W
C23	48.98	612.62	0°46'28"	48.96 N76°31'30"W
C24	62.15	727.62	0°46'38"	62.13 N76°31'30"W
C25	48.98	612.62	0°46'28"	48.96 N81°18'32"W
C26	58.36	727.62	0°46'28"	58.34 N81°18'32"W
C27	52.86	612.62	0°46'38"	52.84 N86°07'04"W
C28	62.78	727.62	0°46'38"	62.76 N86°07'04"W
C29	4.35	612.62	0°23'32"	4.35 N88°48'29"W
C30	5.40	727.62	0°23'32"	5.40 N88°48'29"W
C31	58.50	777.62	0°41'38"	58.49 N81°25'09"W
C32	72.72	902.62	0°43'38"	72.70 N81°24'18"W
C33	48.42	777.62	0°38'29"	48.41 N72°38'50"W
C34	57.38	902.62	0°38'29"	57.35 N72°38'50"W
C35	48.42	777.62	0°38'29"	48.41 N70°09'38"W
C36	57.38	902.62	0°38'29"	57.35 N70°09'38"W
C37	48.42	777.62	0°38'29"	48.41 N65°11'10"W
C38	57.38	902.62	0°38'29"	57.35 N65°11'10"W
C39	48.42	777.62	0°38'29"	48.41 N62°44'07"W
C40	57.38	902.62	0°38'29"	57.35 N62°44'07"W
C41	61.86	902.62	0°35'37"	61.85 N58°48'29"W
C42	53.30	777.62	0°35'37"	53.29 N58°48'29"W
C43	61.86	902.62	0°35'37"	61.85 N58°48'29"W
C44	61.86	902.62	0°35'37"	61.85 N58°48'29"W
C45	48.45	777.62	0°34'12"	48.44 N55°03'35"W
C46	56.24	902.62	0°34'12"	56.23 N55°03'35"W
C47	48.45	777.62	0°34'12"	48.44 N51°29'23"W
C48	56.24	902.62	0°34'12"	56.23 N51°29'23"W
C49	48.45	777.62	0°34'12"	48.44 N47°05'12"W
C50	56.24	902.62	0°34'12"	56.23 N47°05'12"W
C51	48.45	777.62	0°34'12"	48.44 N42°40'48"W
C52	56.24	902.62	0°34'12"	56.23 N42°40'48"W
C53	48.45	777.62	0°34'12"	48.44 N37°12'37"W
C54	56.24	902.62	0°34'12"	56.23 N37°12'37"W
C55	48.45	777.62	0°34'12"	48.44 N32°54'17"W
C56	56.24	902.62	0°34'12"	56.23 N32°54'17"W
C57	67.08	752.62	51°32'47"	65.46 N81°22'28"W
C58	24.50	752.62	01°52'09"	24.50 N81°22'28"W
C59	67.08	752.62	51°32'47"	65.46 N81°22'28"W
C60	31.46	1015.00	01°48'32"	31.45 S43°03'37"E
C61	18.31	437.62	02°23'02"	18.31 S43°03'37"E
C62	72.20	892.62	04°38'05"	72.19 N81°34'53"W
C63	16.27	15.00	82°14'51"	14.54 S49°28'39"W
C64	61.73	25.00	200°04'	8.89 N73°54'17"W
C65	28.98	25.00	66°25'19"	27.39 S30°21'26"E
C66	18.03	15.00	81°52'09"	14.37 N43°04'51"W
C67	28.98	25.00	66°25'19"	27.39 N50°03'37"E
C68	9.47	25.00	21°42'33"	9.42 N80°07'49"E

LINE TABLE		
LINE	BEARING	LENGTH
L1	N89°00'55"W	28.88
L2	N89°00'55"W	50.00
L3	S43°08'11"E	40.00
L4	S89°00'55"E	50.00
L5	S89°00'55"E	48.35
L6	S72°33'14"E	48.35
L7	S87°11'06"E	48.35
L8	S89°00'55"E	50.99
L9	S44°11'21"E	50.99

THIS PLAT PREPARED BY MELBOURNE-TILLMAN DRAINAGE CANAL DISTRICT CANAL No. 70  
B.S.E. CONSULTANTS, INC.  
CONSULTING, ENGINEERING, LAND SURVEYING  
312 S. Harbor City Blvd., Suite 4, Melbourne, Florida 32901-720-2874  
DATE: 12/10/98  
S.E.E. DRAWING #10090612