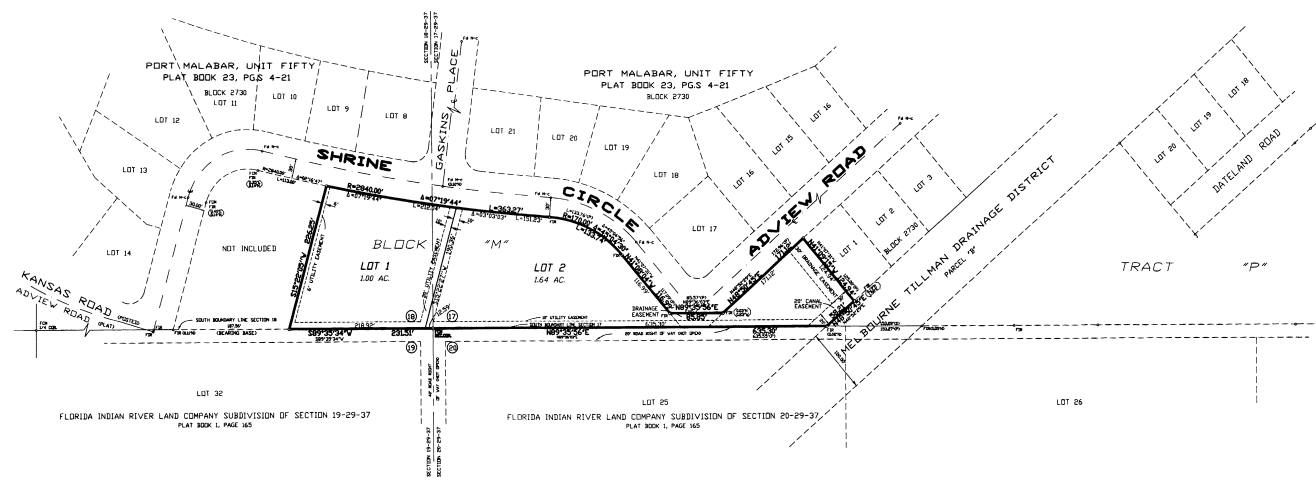
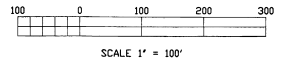


PINE RIDGE ESTATES PHASE NO.2

A PLAT OF A PORTION OF SECTIONS 17 & 18, TOWNSHIP 29 SOUTH, RANGE 37 EAST
 AND BEING A REPLAT OF A PORTIONS OF TRACTS "K" & "M" OF PORT MALABAR
 UNIT FIFTY AS RECORDED IN PLAT BOOK 23, PAGES 4 THRU 21 OF THE PUBLIC
 RECORDS OF BREVARD COUNTY, FLORIDA
 CITY OF PALM BAY BREVARD COUNTY, FLORIDA



- LEGEND**
- R = RADIUS
 - ∠ = CENTRAL ANGLE
 - L = ARC LENGTH
 - R/W = RIGHT OF WAY
 - = PRM
 - ⊙ = SET NAIL AND CAP
 - SRM = SET IRON ROD NLS 3444
 - FCM = FOUND CONCRETE MONUMENT
 - FIR = FOUND IRON ROD
 - POB = POINT OF BEGINNING
 - POC = POINT OF COMMENCEMENT
 - CP = PLAT
 - CS = SURVEY
 - CD = CALCULATED
 - PLS = PROFESSIONAL LAND SURVEYOR
 - PRM = PERMANENT REFERENCE MONUMENT
 - PR = PLAT BOOK
 - PG = PAGE
 - DR = OFFICIAL RECORDS
 - SCM = SET CONCRETE MONUMENT
 - CL = CENTERLINE
 - EDP = EDGE OF PAVEMENT

GENERAL NOTES

THIS PLAT AS RECORDED IN ITS GRAPHIC FORM, IS THE OFFICIAL DEPICTION OF THE SUBDIVIDED LANDS DESCRIBED HEREIN AND WILL IN NO CIRCUMSTANCES BE SUPPLANTED IN AUTHORITY BY ANY OTHER GRAPHIC OR DIGITAL FORM OF THE PLAT.

THIS INSTRUMENT WAS PREPARED BY:
Ralph B. Demuzgin & Associates, Inc.
 Consulting Engineers, Planners, Surveyors
 6100 Boulevard of Champions
 North Lauderdale, Florida 33068
 (954) 969-5100
 FAX (954) 969-9680