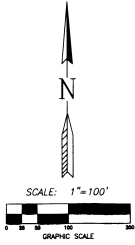


# VIERA NORTH P.U.D. - TRACT Z & A PORTION OF CLUBHOUSE DRIVE

LYING IN SECTION 27, TOWNSHIP 25 SOUTH, RANGE 36 EAST, BREVARD COUNTY, FLORIDA



**ABBREVIATIONS:**

- E CENTERLINE
- A ARC LENGTH
- CH CHORD LENGTH
- CH BRG CHORD BEARING
- D DELTA ANGLE
- LS LAND SURVEYING BUSINESS
- D.R.B. OFFICIAL RECORDS BOOK
- PC POINT OF CURVATURE
- PI POINT OF INTERSECTION
- P.K. PARKER KALON (BRAND NAME)
- P.L.S. PROFESSIONAL LAND SURVEYOR
- P.O.C. POINT OF CURVATURE
- P.R.C. POINT OF REVERSE CURVATURE
- P.R.M. PERMANENT REFERENCE MONUMENT
- PT POINT OF TANGENCY
- R RADIUS
- ROW RIGHT OF WAY
- TYP. TYPICAL

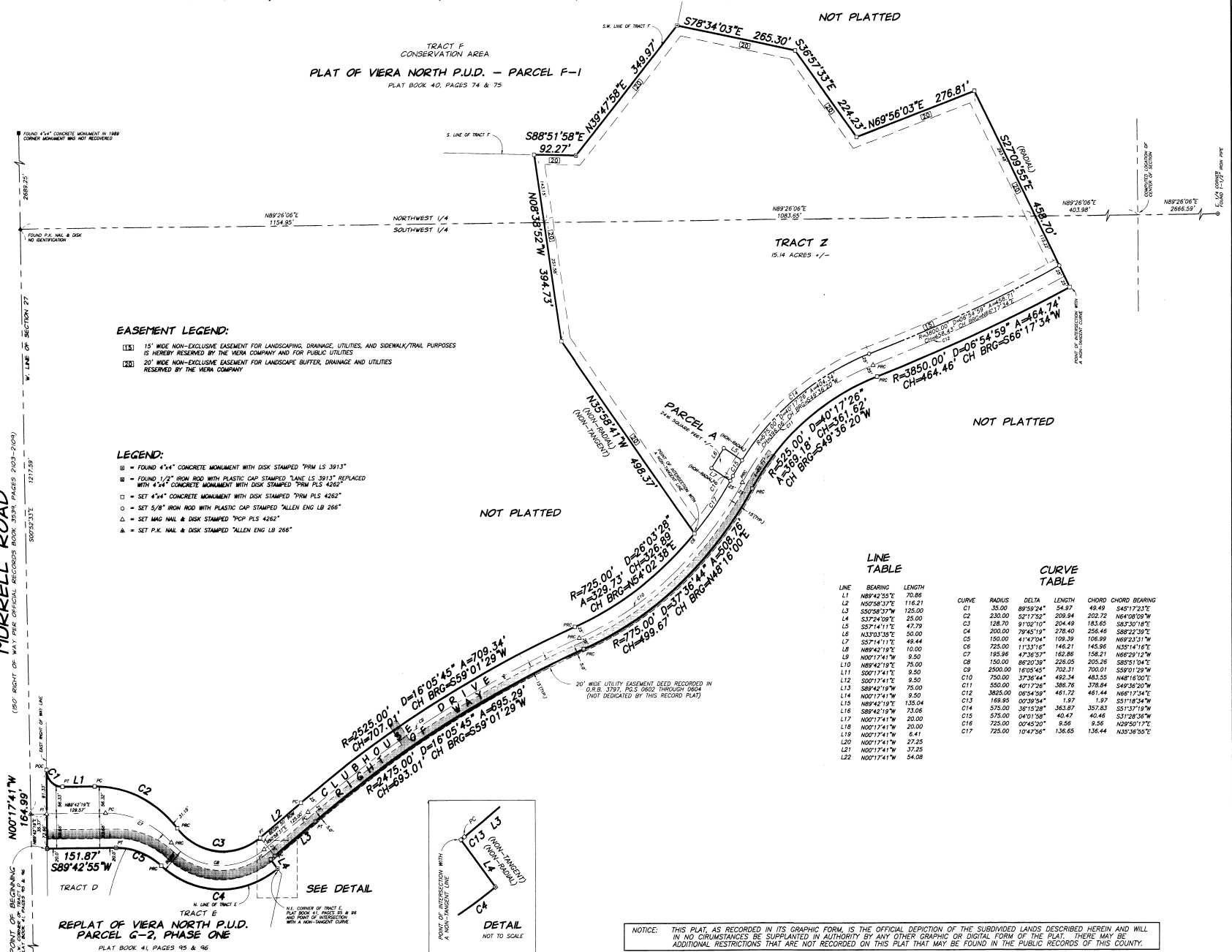
**EASEMENT LEGEND:**

- (15) 15' WIDE NON-EXCLUSIVE EASEMENT FOR LANDSCAPING, DRAINAGE, UTILITIES, AND SIDEWALK/TRAIL PURPOSES IS HEREBY RESERVED BY THE VIERA COMPANY AND FOR PUBLIC UTILITIES
- (20) 20' WIDE NON-EXCLUSIVE EASEMENT FOR LANDSCAPE BUFFER, DRAINAGE AND UTILITIES RESERVED BY THE VIERA COMPANY

**LEGEND:**

- FOUND 4"x4" CONCRETE MONUMENT WITH DISK STAMPED "PRM LS 3913"
- FOUND 1/2" IRON ROD WITH PLASTIC CAP STAMPED "LANE LS 3913" REPLACED WITH 4"x4" CONCRETE MONUMENT WITH DISK STAMPED "PRM PLS 4262"
- SET 4"x4" CONCRETE MONUMENT WITH DISK STAMPED "PRM PLS 4262"
- SET 5/8" IRON ROD WITH PLASTIC CAP STAMPED "ALLEN ENG LB 266"
- △ SET MAG NAIL & DISK STAMPED "PCP PLS 4262"
- ▲ SET P.K. NAIL & DISK STAMPED "ALLEN ENG LB 266"

MURRELL ROAD

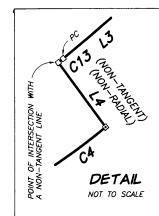


**LINE TABLE**

| LINE | BEARING     | LENGTH |
|------|-------------|--------|
| L1   | N89°42'55"E | 70.86  |
| L2   | N87°58'37"E | 116.21 |
| L3   | S50°58'37"W | 125.00 |
| L4   | S37°24'09"E | 25.00  |
| L5   | S57°14'11"E | 47.79  |
| L6   | N33°03'35"E | 50.00  |
| L7   | S57°14'11"E | 49.44  |
| L8   | N89°42'19"E | 10.00  |
| L9   | N00°17'41"W | 9.50   |
| L10  | N89°42'19"E | 75.00  |
| L11  | S00°17'41"E | 9.50   |
| L12  | S00°17'41"E | 9.50   |
| L13  | S89°42'19"W | 75.00  |
| L14  | N00°17'41"W | 9.50   |
| L15  | N89°42'19"E | 135.04 |
| L16  | S89°42'19"W | 73.06  |
| L17  | N00°17'41"W | 20.00  |
| L18  | N00°17'41"W | 20.00  |
| L19  | N00°17'41"W | 6.41   |
| L20  | N00°17'41"W | 22.25  |
| L21  | N00°17'41"W | 37.25  |
| L22  | N00°17'41"W | 54.08  |

**CURVE TABLE**

| CURVE | RADIUS  | DELTA     | LENGTH | CHORD  | CHORD BEARING |
|-------|---------|-----------|--------|--------|---------------|
| C1    | 35.00   | 89°59'24" | 54.97  | 48.49  | S45°17'23"E   |
| C2    | 230.00  | S2°17'52" | 209.84 | 202.72 | N64°08'00"W   |
| C3    | 128.70  | 87°50'10" | 204.49 | 185.65 | S83°30'18"E   |
| C4    | 200.00  | 79°45'19" | 278.40 | 256.46 | S86°22'39"E   |
| C5    | 150.00  | 41°47'04" | 108.39 | 106.89 | N89°23'51"W   |
| C6    | 725.00  | 11°33'16" | 146.21 | 145.86 | N35°14'16"E   |
| C7    | 195.86  | 47°36'57" | 162.86 | 156.21 | N66°29'12"W   |
| C8    | 150.00  | 80°20'30" | 226.05 | 205.26 | S85°15'04"E   |
| C9    | 2500.00 | 16°05'45" | 702.31 | 700.01 | S59°01'29"W   |
| C10   | 750.00  | 37°36'44" | 492.34 | 483.55 | N48°16'00"E   |
| C11   | 550.00  | 40°17'28" | 386.76 | 378.84 | S49°36'20"W   |
| C12   | 3825.00 | 06°54'58" | 461.72 | 461.44 | N66°17'34"E   |
| C13   | 169.85  | 00°39'54" | 1.97   | 1.97   | S51°18'34"W   |
| C14   | 575.00  | 50°15'28" | 363.87 | 357.83 | S51°37'19"W   |
| C15   | 575.00  | 04°01'58" | 40.47  | 40.46  | S31°28'36"W   |
| C16   | 725.00  | 00°45'20" | 9.88   | 9.86   | N29°50'17"E   |
| C17   | 725.00  | 10°47'56" | 136.65 | 136.44 | N30°56'56"E   |



PREPARED BY:  
**ALLEN**  
Engineering, Inc.  
ENGINEERS - SURVEYORS  
FOR STATE LICENSE NO. 16, WEI 251351  
15001 BRADY, TOWNSHIP 25S, RANGE 36E  
TELEPHONE: (407) 933-7442 FAX: (407) 933-0442  
CERTIFICATE OF AUTHORIZATION # 16,244

REPLAT OF VIERA NORTH P.U.D.  
PARCEL G-2, PHASE ONE  
PLAT BOOK 41, PAGES 95 & 96

NOTICE: THIS PLAT, AS RECORDED IN ITS GRAPHIC FORM, IS THE OFFICIAL DEPICTION OF THE SUBDIVIDED LANDS DESCRIBED HEREIN AND WILL IN NO CIRCUMSTANCES BE SUPPLEMENTED IN AUTHORITY BY ANY OTHER GRAPHIC OR DIGITAL FORM OF THE PLAT. THERE MAY BE ADDITIONAL RESTRICTIONS THAT ARE NOT RECORDED ON THIS PLAT THAT MAY BE FOUND IN THE PUBLIC RECORDS OF THIS COUNTY.