

DRAWING NUMBER  
**44-44**

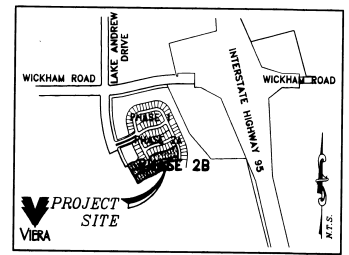
DRAWING NUMBER

DRAWING NUMBER

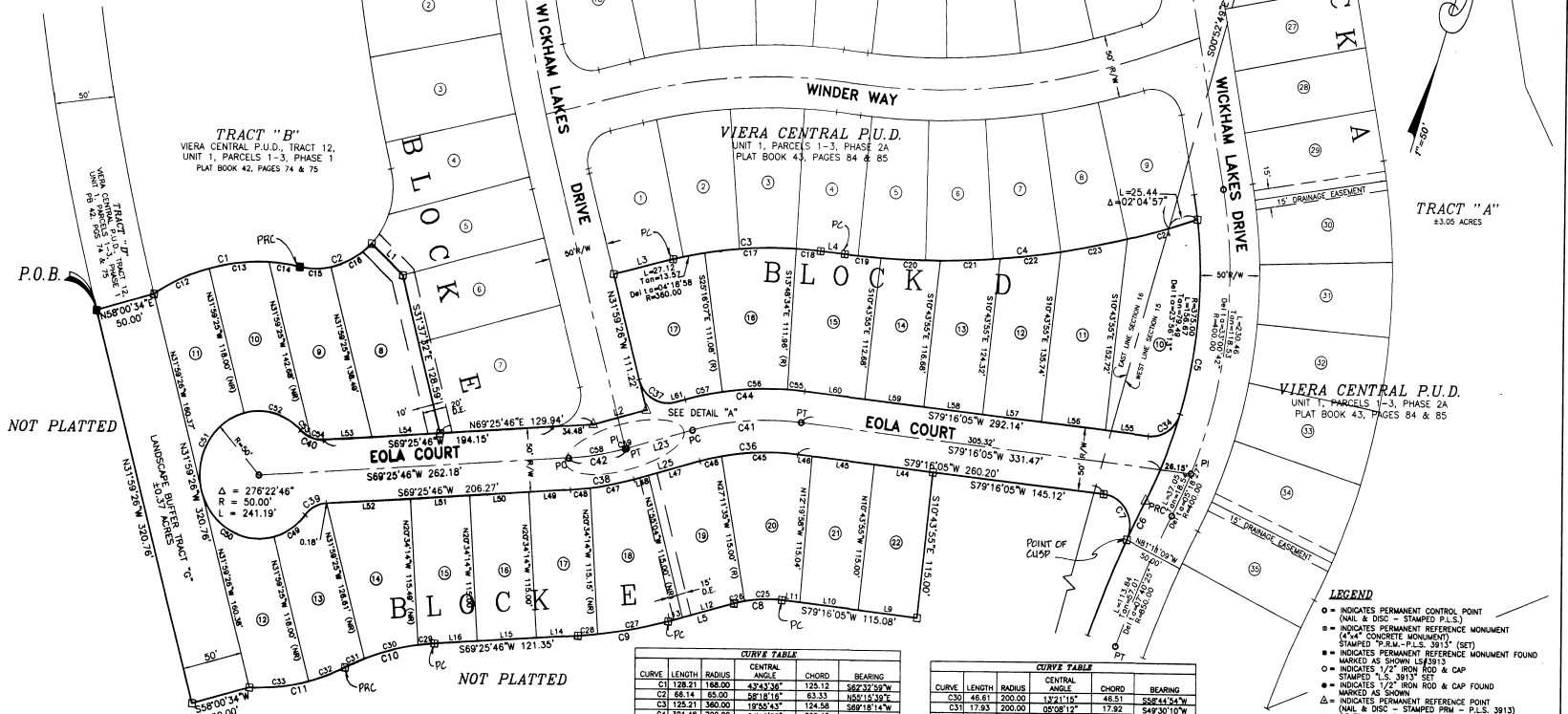
DRAWING NUMBER

# VIERA CENTRAL PUD, TRACT 12, UNIT 1, PARCELS 1-3, PHASE 2B SECTION 15 & 16, TOWNSHIP 26 SOUTH, RANGE 36 EAST VIERA, BREVARD COUNTY, FLORIDA

PLAT BOOK 44 PAGE 24  
SHEET 2 OF 2  
SECTION 15&16, TOWNSHIP 26 S., RANGE 36 E.



VICINITY MAP  
N.T.S.



**LINE TABLE**

LINE	BEARING	LENGTH
L1	S83°27'00"W	35.40
L2	N88°04'54"E	48.15
L3	N82°23'21"E	51.41
L4	N77°18'00"W	20.51
L5	S88°04'54"W	57.42
L6	S77°18'00"W	50.00
L7	S77°18'00"W	49.88
L8	S77°18'00"W	15.38
L9	S82°04'54"W	45.00
L10	S82°04'54"W	17.49
L11	S82°04'54"W	38.33
L12	S82°04'54"W	50.00
L13	S82°04'54"W	50.00
L14	S82°04'54"W	38.33
L15	S82°04'54"W	57.42
L16	S77°18'00"W	50.00
L17	S77°18'00"W	50.00
L18	S77°18'00"W	50.00
L19	S77°18'00"W	50.00
L20	S77°18'00"W	50.00
L21	S77°18'00"W	50.00
L22	S77°18'00"W	50.00
L23	S77°18'00"W	50.00
L24	S77°18'00"W	50.00
L25	S77°18'00"W	50.00
L26	S77°18'00"W	50.00
L27	S77°18'00"W	50.00
L28	S77°18'00"W	50.00
L29	S77°18'00"W	50.00
L30	S77°18'00"W	50.00
L31	S77°18'00"W	50.00
L32	S77°18'00"W	50.00
L33	S77°18'00"W	50.00
L34	S77°18'00"W	50.00
L35	S77°18'00"W	50.00
L36	S77°18'00"W	50.00
L37	S77°18'00"W	50.00
L38	S77°18'00"W	50.00
L39	S77°18'00"W	50.00
L40	S77°18'00"W	50.00
L41	S77°18'00"W	50.00
L42	S77°18'00"W	50.00
L43	S77°18'00"W	50.00
L44	S77°18'00"W	50.00
L45	S77°18'00"W	50.00
L46	S77°18'00"W	50.00
L47	S77°18'00"W	50.00
L48	S77°18'00"W	50.00
L49	S77°18'00"W	50.00
L50	S77°18'00"W	50.00
L51	S77°18'00"W	50.00
L52	S77°18'00"W	50.00
L53	S77°18'00"W	50.00
L54	S77°18'00"W	50.00
L55	S77°18'00"W	50.00
L56	S77°18'00"W	50.00
L57	S77°18'00"W	50.00
L58	S77°18'00"W	50.00
L59	S77°18'00"W	50.00
L60	S77°18'00"W	50.00
L61	S77°18'00"W	50.00
L62	S77°18'00"W	50.00
L63	S77°18'00"W	50.00
L64	S77°18'00"W	50.00
L65	S77°18'00"W	50.00
L66	S77°18'00"W	50.00
L67	S77°18'00"W	50.00
L68	S77°18'00"W	50.00
L69	S77°18'00"W	50.00
L70	S77°18'00"W	50.00
L71	S77°18'00"W	50.00
L72	S77°18'00"W	50.00
L73	S77°18'00"W	50.00
L74	S77°18'00"W	50.00
L75	S77°18'00"W	50.00
L76	S77°18'00"W	50.00
L77	S77°18'00"W	50.00
L78	S77°18'00"W	50.00
L79	S77°18'00"W	50.00
L80	S77°18'00"W	50.00
L81	S77°18'00"W	50.00
L82	S77°18'00"W	50.00
L83	S77°18'00"W	50.00
L84	S77°18'00"W	50.00
L85	S77°18'00"W	50.00
L86	S77°18'00"W	50.00
L87	S77°18'00"W	50.00
L88	S77°18'00"W	50.00
L89	S77°18'00"W	50.00
L90	S77°18'00"W	50.00
L91	S77°18'00"W	50.00
L92	S77°18'00"W	50.00
L93	S77°18'00"W	50.00
L94	S77°18'00"W	50.00
L95	S77°18'00"W	50.00
L96	S77°18'00"W	50.00
L97	S77°18'00"W	50.00
L98	S77°18'00"W	50.00
L99	S77°18'00"W	50.00
L100	S77°18'00"W	50.00

**LINE TABLE**

LINE	BEARING	LENGTH
L46	S77°18'00"W	12.18
L47	N88°04'54"E	45.00
L48	N82°04'54"E	12.42
L49	S82°04'54"W	38.33
L50	S82°04'54"W	50.00
L51	S82°04'54"W	50.00
L52	S82°04'54"W	50.00
L53	S82°04'54"W	41.00
L54	S82°04'54"W	57.80
L55	S77°18'00"W	50.00
L56	S77°18'00"W	54.50
L57	S77°18'00"W	50.00
L58	S77°18'00"W	50.00
L59	S77°18'00"W	50.00
L60	S77°18'00"W	50.00
L61	S82°04'54"W	57.80
L62	S82°04'54"W	50.00
L63	S82°04'54"W	50.00
L64	S82°04'54"W	50.00
L65	S82°04'54"W	50.00
L66	S82°04'54"W	50.00
L67	S82°04'54"W	50.00
L68	S82°04'54"W	50.00
L69	S82°04'54"W	50.00
L70	S82°04'54"W	50.00
L71	S82°04'54"W	50.00
L72	S82°04'54"W	50.00
L73	S82°04'54"W	50.00
L74	S82°04'54"W	50.00
L75	S82°04'54"W	50.00
L76	S82°04'54"W	50.00
L77	S82°04'54"W	50.00
L78	S82°04'54"W	50.00
L79	S82°04'54"W	50.00
L80	S82°04'54"W	50.00
L81	S82°04'54"W	50.00
L82	S82°04'54"W	50.00
L83	S82°04'54"W	50.00
L84	S82°04'54"W	50.00
L85	S82°04'54"W	50.00
L86	S82°04'54"W	50.00
L87	S82°04'54"W	50.00
L88	S82°04'54"W	50.00
L89	S82°04'54"W	50.00
L90	S82°04'54"W	50.00
L91	S82°04'54"W	50.00
L92	S82°04'54"W	50.00
L93	S82°04'54"W	50.00
L94	S82°04'54"W	50.00
L95	S82°04'54"W	50.00
L96	S82°04'54"W	50.00
L97	S82°04'54"W	50.00
L98	S82°04'54"W	50.00
L99	S82°04'54"W	50.00
L100	S82°04'54"W	50.00

**CURVE TABLE**

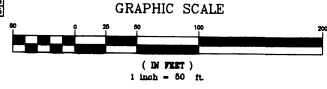
CURVE	LENGTH	RADIUS	CENTRAL ANGLE	CHORD	BEARING
C1	128.21	188.00	42°43'36"	125.12	S82°32'58"W
C2	86.14	85.00	58°18'18"	63.33	N55°15'39"E
C3	125.21	300.00	18°53'42"	124.58	S89°18'14"W
C4	301.48	700.00	24°40'36"	295.15	S89°18'14"W
C5	206.85	375.00	30°16'15"	227.22	N06°32'52"W
C6	48.83	475.00	14°32'48"	34.93	S82°04'54"W
C7	47.80	25.00	109°32'48"	40.84	S09°27'29"W
C8	46.87	110.00	21°11'09"	40.44	S88°40'31"W
C9	77.24	380.00	12°02'50"	73.11	N45°27'29"W
C10	78.52	200.00	22°29'42"	78.02	S83°45'11"E
C11	83.27	188.00	28°23'34"	82.42	N01°08'01"E
C12	52.79	188.00	17°19'24"	50.60	S82°04'54"W
C13	50.77	188.00	17°19'24"	50.58	S82°04'54"W
C14	26.65	188.00	09°00'34"	26.62	S72°28'07"W
C15	36.84	85.00	23°13'00"	28.16	N72°48'15"E
C16	36.80	85.00	30°05'12"	35.19	S82°04'54"W
C17	77.33	380.00	12°18'28"	77.18	S88°48'34"W
C18	107.1	380.00	03°18'18"	107.00	S72°04'54"W
C19	30.78	700.00	02°31'11"	30.78	S72°04'54"W
C20	50.17	700.00	04°06'24"	50.16	N74°11'43"E
C21	50.56	700.00	04°11'58"	50.56	N70°24'12"E
C22	51.30	700.00	04°11'58"	51.29	N62°40'12"E
C23	52.10	700.00	04°20'24"	52.08	N61°52'50"E
C24	61.54	700.00	02°02'12"	61.52	N62°06'12"E
C25	31.60	110.00	162°40'31"	31.49	S71°02'15"W
C26	9.97	110.00	04°23'29"	9.97	S82°28'41"W
C27	60.85	380.00	08°33'45"	60.49	N42°21'46"E
C28	18.69	380.00	02°02'50"	18.68	N58°12'14"E
C29	13.98	200.00	04°00'15"	13.97	S82°28'38"W

**CURVE TABLE**

CURVE	LENGTH	RADIUS	CENTRAL ANGLE	CHORD	BEARING
C30	46.81	200.00	13°21'16"	46.51	S52°44'54"W
C31	17.83	200.00	05°08'12"	17.82	S42°30'10"W
C32	32.47	188.00	11°02'31"	32.43	N52°28'19"E
C33	50.79	188.00	17°19'24"	50.60	N62°40'18"E
C34	34.89	25.00	79°30'01"	31.97	N32°31'08"E
C35	83.50	225.00	21°11'09"	82.72	S82°45'11"W
C37	39.24	25.00	89°50'38"	35.33	S78°57'15"E
C38	56.48	225.00	11°02'50"	54.37	N62°45'21"E
C39	49.81	250.00	08°11'23"	49.41	S42°02'26"W
C40	21.03	25.00	48°11'23"	20.41	S88°28'33"E
C41	92.44	250.00	21°11'09"	91.92	S62°40'31"W
C42	89.81	250.00	21°11'09"	89.32	S62°40'31"W
C43	101.89	275.00	21°11'09"	101.11	S62°40'31"W
C44	66.84	225.00	162°40'31"	64.42	S71°02'15"W
C46	18.50	225.00	05°08'12"	18.50	S82°28'41"W
C47	37.77	275.00	07°52'11"	37.74	N62°41'02"E
C48	16.89	225.00	03°28'30"	16.89	N67°41'24"E
C49	32.08	50.00	36°44'33"	31.52	N32°28'40"E
C50	78.56	50.00	90°01'38"	70.73	S72°00'15"E
C51	78.56	50.00	90°01'38"	70.73	S170°12'42"W
C52	52.00	50.00	90°01'38"	49.68	S82°49'14"E
C53	10.33	25.00	22°40'36"	10.26	S74°13'09"E
C54	10.70	25.00	22°40'36"	10.61	N81°41'09"E
C55	14.77	275.00	03°04'34"	14.77	S72°41'48"W
C56	55.00	275.00	11°27'33"	54.81	S72°27'40"W
C57	31.81	275.00	08°38'57"	31.80	S81°24'26"W
C58	48.34	250.00	11°04'45"	48.27	S82°04'54"W
C59	1.17	250.00	00°18'04"	1.17	N58°12'28"E

- LEGEND**
- INDICATES PERMANENT CONTROL POINT (NAIL & DISC - STAMPED P.L.S.)
  - INDICATES PERMANENT REFERENCE MONUMENT (4"X4" CONCRETE MONUMENT)
  - STAMPED "P.L.S. - P.L.S. 3915" (SET)
  - INDICATES PERMANENT REFERENCE MONUMENT FOUND MARKED AS SHOWN (L.S. 915)
  - INDICATES 1/2" IRON ROD & CAP STAMPED AS SHOWN (L.S. 915)
  - INDICATES 1/2" IRON ROD & CAP FOUND MARKED AS SHOWN (L.S. 915)
  - △ INDICATES PERMANENT REFERENCE POINT (NAIL & DISC - STAMPED P.M. - P.L.S. 3913)
  - ▲ TANGENT ANGLE OF CURVE (DECA)
  - R RADIUS OF CURVE
  - L TANGENT LENGTH OF CURVE
  - A ARC LENGTH OF CURVE
  - PND POINT OF BEGINNING
  - END POINT OF ENDING
  - DSM DRAINAGE EASEMENT
  - TY TYPICAL
  - RV RIGHT OF WAY
  - CL CENTERLINE
  - MAX MAXIMUM
  - P.O.B. POINT OF BEGINNING
  - P.O.C. POINT OF COMMENCEMENT
  - PL PLAT BOOK
  - PS PAGES
  - DR DRAINAGE EASEMENT
  - PL PLANNED UTILITY & DRAINAGE EASEMENT
  - P.O.C. POINT OF COMMENCEMENT
  - PC POINT OF CURVATURE
  - PRC POINT OF REVERSE CURVATURE
  - PI POINT OF INTERSECTION
  - PT POINT OF TANGENCY
  - C CURVE
  - L LINE

THIS PLAT PREPARED BY  
**B.S.E. CONSULTANTS, INC.**  
 CONSULTING, ENGINEERING, LAND SURVEYING  
 312 S. Harbor City Blvd. Suite 4, Melbourne, Florida (407) 723-3474  
 DATE: 6/28/88  
 B.S.E. DRAWING #1006360



NOTICE: THIS PLAT, AS RECORDED IN ITS GRAPHIC FORM, IS THE OFFICIAL DEPICTION OF THE SUBDIVIDED LANDS DESCRIBED HEREIN AND WILL IN NO CIRCUMSTANCES BE SUPPLANTED IN AUTHORITY BY ANY OTHER GRAPHIC OR DIGITAL FORM OF THE PLAT. THERE MAY BE ADDITIONAL RESTRICTIONS THAT ARE NOT RECORDED ON THIS PLAT THAT MAY BE FOUND IN THE PUBLIC RECORDS OF THIS COUNTY.