

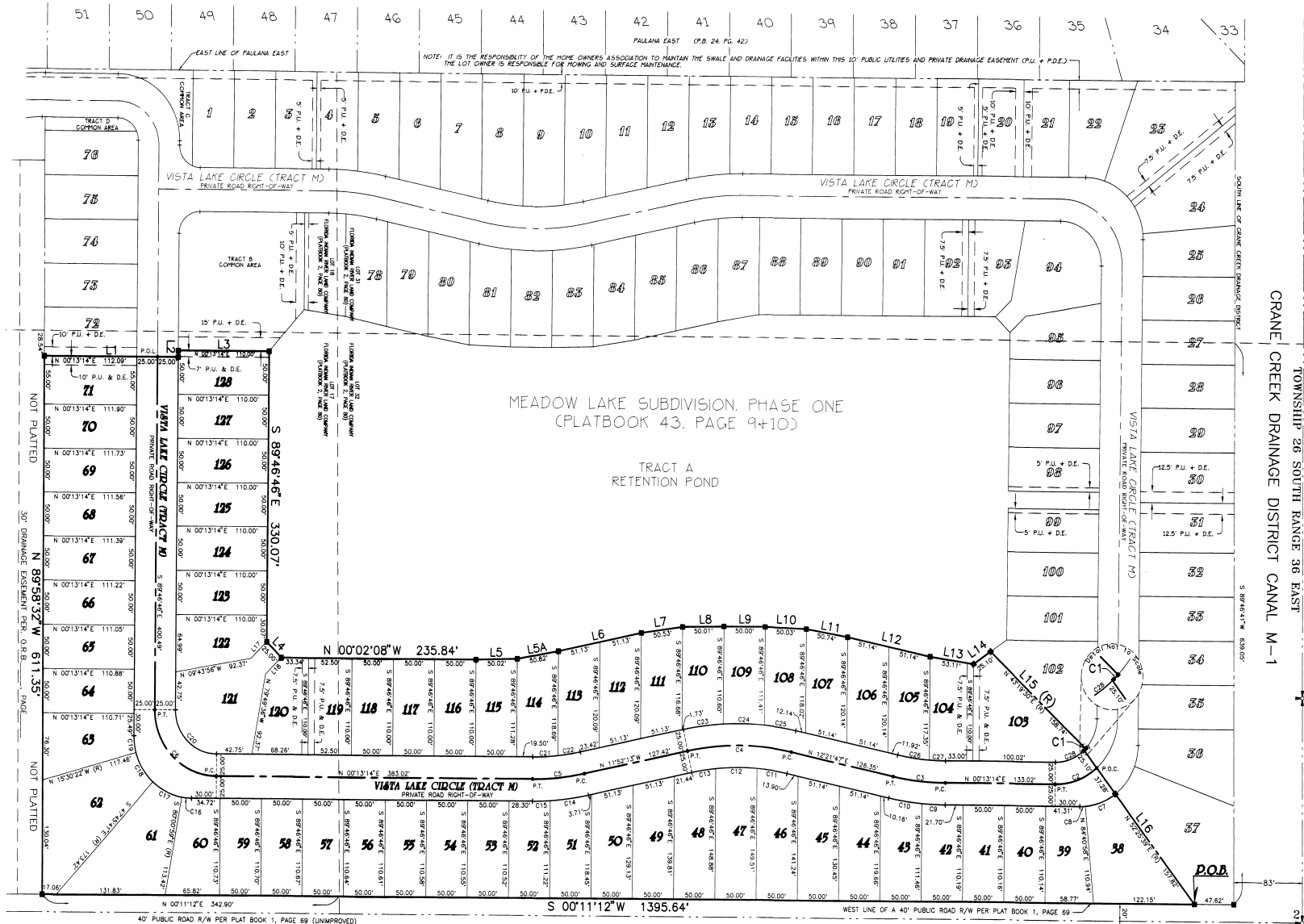
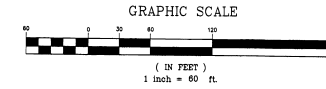
CURVE	CHORD	RADIUS	ARC	CHORD BEG	TANGENT	CHORD END	BEARING	DISTANCE
1	429.00	50.00	2.81	1.33 N	02°03'14"E	182.00	N 02°03'14"E	7.25
2	429.00	50.00	2.81	1.33 N	02°03'14"E	182.00	N 02°03'14"E	7.25
3	1208.33	300.00	6.58	63.58	83.59	28.89	S 22°42'30"W	7.25
4	2416.67	300.00	13.16	118.81	158.81	41.41	S 07°14'30"E	7.25
5	1208.33	300.00	6.58	63.58	83.59	28.89	S 22°42'30"W	7.25
6	429.00	50.00	2.81	1.33 N	02°03'14"E	182.00	N 02°03'14"E	7.25
7	372.15	70.00	3.94	38.89	20.24	21.25	N 21°54'15"W	50.00
8	372.15	70.00	3.94	38.89	20.24	21.25	N 21°54'15"W	50.00
9	498.41	325.00	28.33	28.32	14.17	N 02°43'05"E	50.01	
10	798.82	325.00	40.54	40.52	20.30	N 02°43'05"E	50.00	
11	498.41	325.00	28.33	28.32	14.17	N 02°43'05"E	50.01	
12	1023.98	275.00	50.00	50.00	25.00	S 03°31'35"W	80.03	
13	602.00	325.00	14.82	14.82	7.41	S 03°31'35"W	53.14	
14	602.00	325.00	14.82	14.82	7.41	S 03°31'35"W	53.14	
15	498.41	325.00	28.33	28.32	14.17	S 02°48'23"E	102.29	
16	798.82	325.00	40.54	40.52	20.30	S 02°48'23"E	102.29	
17	498.41	325.00	28.33	28.32	14.17	S 02°48'23"E	102.29	
18	321.15	70.00	3.94	38.89	20.24	N 20°08'40"W	25.10	
19	321.15	70.00	3.94	38.89	20.24	N 20°08'40"W	25.10	
20	902.00	50.00	17.24	16.15	15.30	N 02°13'14"E	53.14	
21	902.00	50.00	17.24	16.15	15.30	N 02°13'14"E	53.14	
22	543.34	275.00	27.42	27.42	13.71	N 02°13'14"E	53.14	
23	543.34	275.00	27.42	27.42	13.71	N 02°13'14"E	53.14	
24	849.50	325.00	40.08	40.01	20.00	S 01°08'15"W	50.00	
25	849.50	325.00	40.08	40.01	20.00	S 01°08'15"W	50.00	
26	804.34	275.00	38.79	38.73	19.41	N 08°19'29"E	18.78	
27	804.34	275.00	38.79	38.73	19.41	N 08°19'29"E	18.78	
28	475.44	50.00	38.31	37.38	20.15	N 21°43'53"E	26.88	

MEADOW LAKE SUBDIVISION PHASE TWO

A REPLAT OF LOTS 17 AND 32 OF FLORIDA INDIAN RIVER LAND COMPANY
AS RECORDED IN PLAT BOOK 1, PAGE 69 OF THE PUBLIC RECORDS OF
BREVARD COUNTY, FLORIDA
LYING IN SECTION 2, TOWNSHIP 28 SOUTH RANGE 36 EAST
BREVARD COUNTY, FLORIDA

PLAT BOOK 44 PAGE 21
SHEET 2 OF 2
SECTION 2 TWP. 28 S., RANGE 36 E.

NOTICE: THIS PLAT AS RECORDED IN ITS GRAPHIC FORM IS THE OFFICIAL RECORD OF THE SUBDIVISION LINES, DISTANCES, BEARINGS AND WILL BE THE BASIS FOR THE PLAT, WHETHER GRAPHIC OR DIGITAL. THE GRAPHIC FORM OF THE PLAT, WHETHER GRAPHIC OR DIGITAL, SHALL BE THE BASIS FOR THE RECORDS THAT ARE NOT RECORDED IN THE PUBLIC RECORDS OF THIS COUNTY.



TOWNSHIP 27 SOUTH RANGE 36 EAST
TOWNSHIP 26 SOUTH RANGE 36 EAST
CRANE CREEK DRAINAGE DISTRICT CANAL M-1

35
36

2
11