

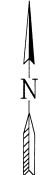
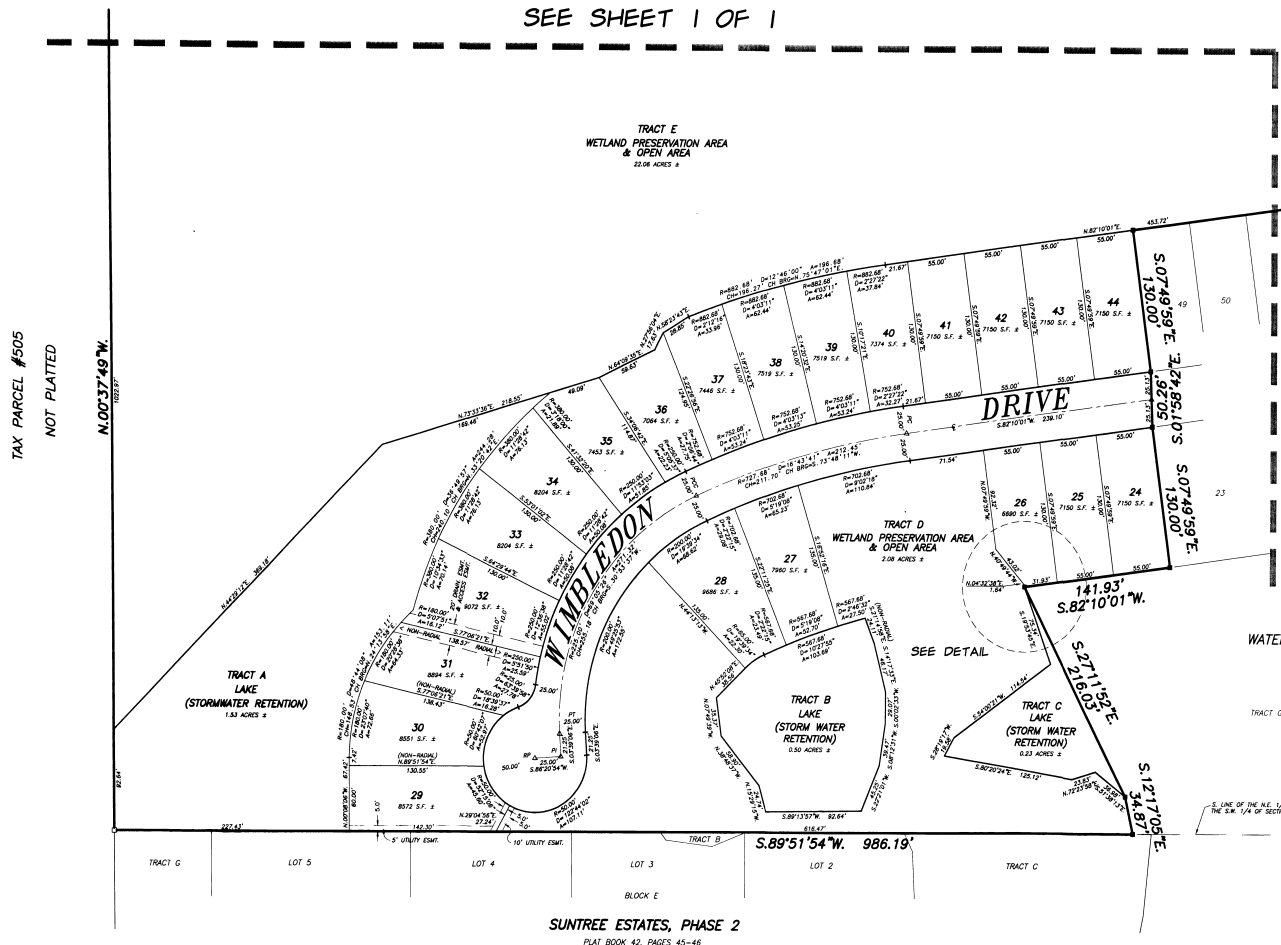
# WATERFORD POINTE, UNIT TWO

A SUBDIVISION OF A PORTION OF SUNTREE P.U.D. TRACTS 37 AND 37C,  
BEING A PORTION OF SECTION 23, TOWNSHIP 26 SOUTH, RANGE 36 EAST, BREVARD COUNTY, FLORIDA

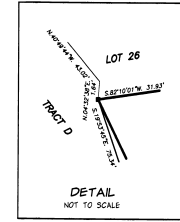
PLAT BOOK 44 PAGE 15

SHEET 2 OF 2  
SECTION 23, TWP. 26 S., RANGE 36 E.

SEE SHEET 1 OF 1



SCALE: 1"=60'  
GRAPHIC SCALE



TAX PARCEL #505  
NOT PLATTED  
N. 00° 37' 49" W.  
100.00'

WATERFORD POINTE, UNIT ONE  
PLAT BOOK 40, PAGE 68

SUNTREE ESTATES, PHASE 2  
PLAT BOOK 42, PAGES 45-46

PREPARED BY:  
**ALLEN**  
Engineering, Inc.  
ENGINEERS - SURVEYORS  
ONE WILSON LANE (P.O. BOX 301381)  
Cocoa Beach, Florida 32935-1381  
TELEPHONE (407) 783-7443 FAX (407) 783-5942

9:0002527.DWG