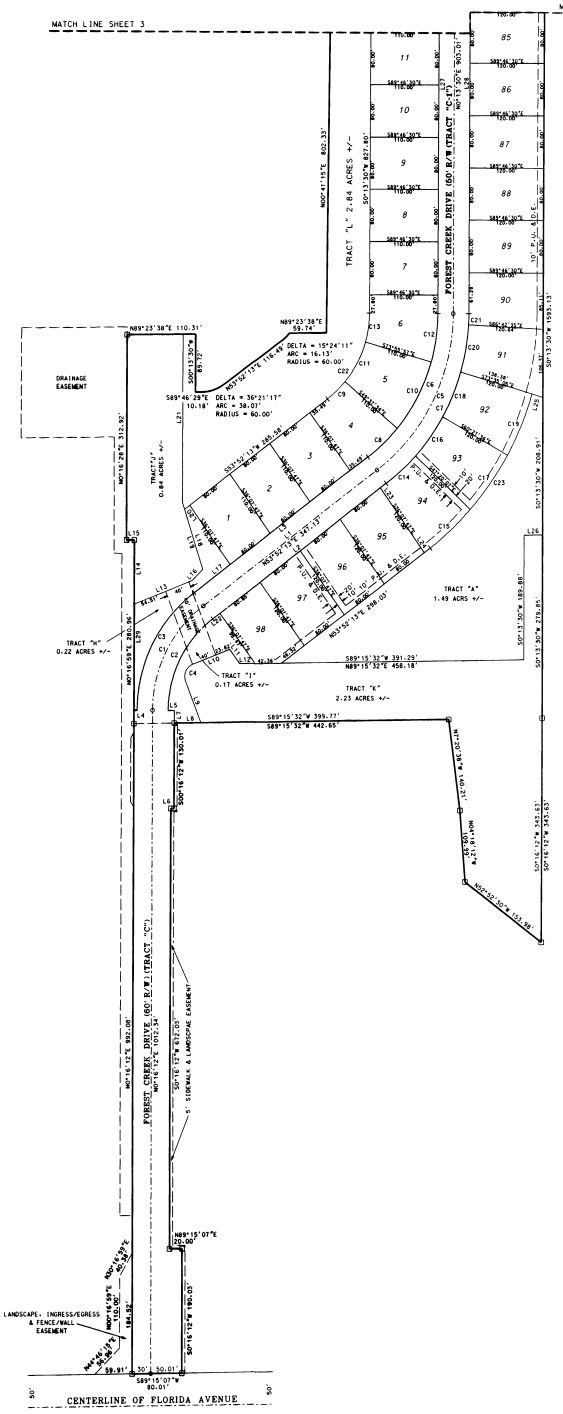


# FOREST CREEK SUBDIVISION, PHASE I

A SUBDIVISION LYING IN SECTION 9, TOWNSHIP 28 SOUTH,  
 RANGE 37 EAST OF BREVARD COUNTY, FLORIDA



No.	DIRECTION	DISTANCE
L1	N 53°20'13" E	347.13
L2	N 53°52'13" E	347.12
L3	N 53°52'13" E	347.13
L4	S 89°43'01" E	5.00
L5	N 89°43'01" W	10.00
L6	S 89°15'01" W	5.00
L7	N 89°15'01" E	10.00
L8	S 89°15'32" W	42.88
L9	S 89°07'46" E	68.88
L10	N 49°00'36" E	63.82
L11	S 58°07'46" E	27.34
L12	S 89°15'31" W	24.53
L13	S 89°15'01" W	100.31
L14	N 0°16'59" E	97.10
L15	S 89°25'13" E	72.07
L16	S 45°14'47" W	23.36
L17	N 53°52'13" E	71.64
L18	S 17°57'07" E	94.73
L19	N 11°52'01" W	100.41
L20	S 53°52'10" W	10.09
L21	N 53°02'27" E	297.36
L22	N 53°52'12" E	14.56
L23	S 53°02'47" E	120.10
L24	S 53°52'12" W	11.71
L25	N 13°50'05" E	18.38
L26	N 89°43'56" E	30.00
L27	N 0°13'30" E	903.01
L28	N 0°13'30" E	903.01

No.	DELTA	TANGENT	ARC	RADIUS	CHORD	CHORD BRG
C1	53°36'01"	101.03	187.10	209.00	180.35	N 27°04'12" E
C2	53°15'11"	86.37	163.67	175.00	157.17	N 24°04'30" E
C3	53°35'11"	113.66	210.49	229.00	202.90	N 27°04'12" E
C4	90°00'00"	20.00	31.42	30.00	28.28	N 24°00'34" E
C5	53°38'43"	151.69	290.89	309.00	270.74	N 27°02'51" E
C6	53°38'43"	138.05	252.48	270.00	246.18	N 27°02'51" E
C7	13°29'46"	32.24	64.78	279.00	84.63	S 47°07'19" W
C8	13°29'46"	18.50	36.97	165.00	36.76	N 49°07'07" E
C9	24°18'23"	59.22	116.86	279.00	115.79	S 28°13'15" W
C10	24°18'23"	35.53	70.00	160.00	62.47	N 02°13'19" E
C11	19°20'37"	38.26	76.04	279.00	76.80	S 87°08'47" W
C12	19°20'37"	22.86	45.62	165.00	45.48	N 45°15'11" E
C13	11°17'03"	43.65	87.03	489.00	86.89	S 48°16'03" W
C14	11°17'03"	37.19	74.45	405.00	74.25	N 16°02'59" E
C15	13°07'29"	51.19	101.94	445.00	101.71	S 36°06'09" W
C16	13°07'29"	31.29	74.45	405.00	74.29	N 44°58'58" E
C17	13°07'29"	31.29	74.45	405.00	74.29	N 44°58'58" E
C18	13°07'29"	8.70	17.39	85.00	17.38	N 44°58'58" E
C19	13°07'29"	31.29	74.45	405.00	74.29	N 44°58'58" E
C20	13°07'29"	8.70	17.39	85.00	17.38	N 44°58'58" E
C21	53°38'43"	83.43	154.49	165.00	146.91	S 27°02'51" W
C22	53°17'19"	150.86	290.90	445.00	295.75	N 35°08'34" E

