

DRAWING NUMBER
43-85

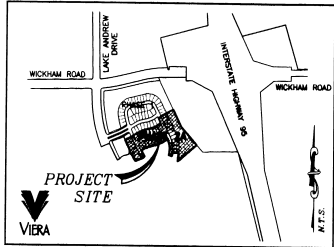
DRAWING NUMBER

DRAWING NUMBER

DRAWING NUMBER

VIERA CENTRAL PUD, TRACT 12, UNIT 1, PARCELS 1-3, PHASE 2A
SECTION 15 & 16, TOWNSHIP 26 SOUTH, RANGE 36 EAST
VIERA, BREVARD COUNTY, FLORIDA

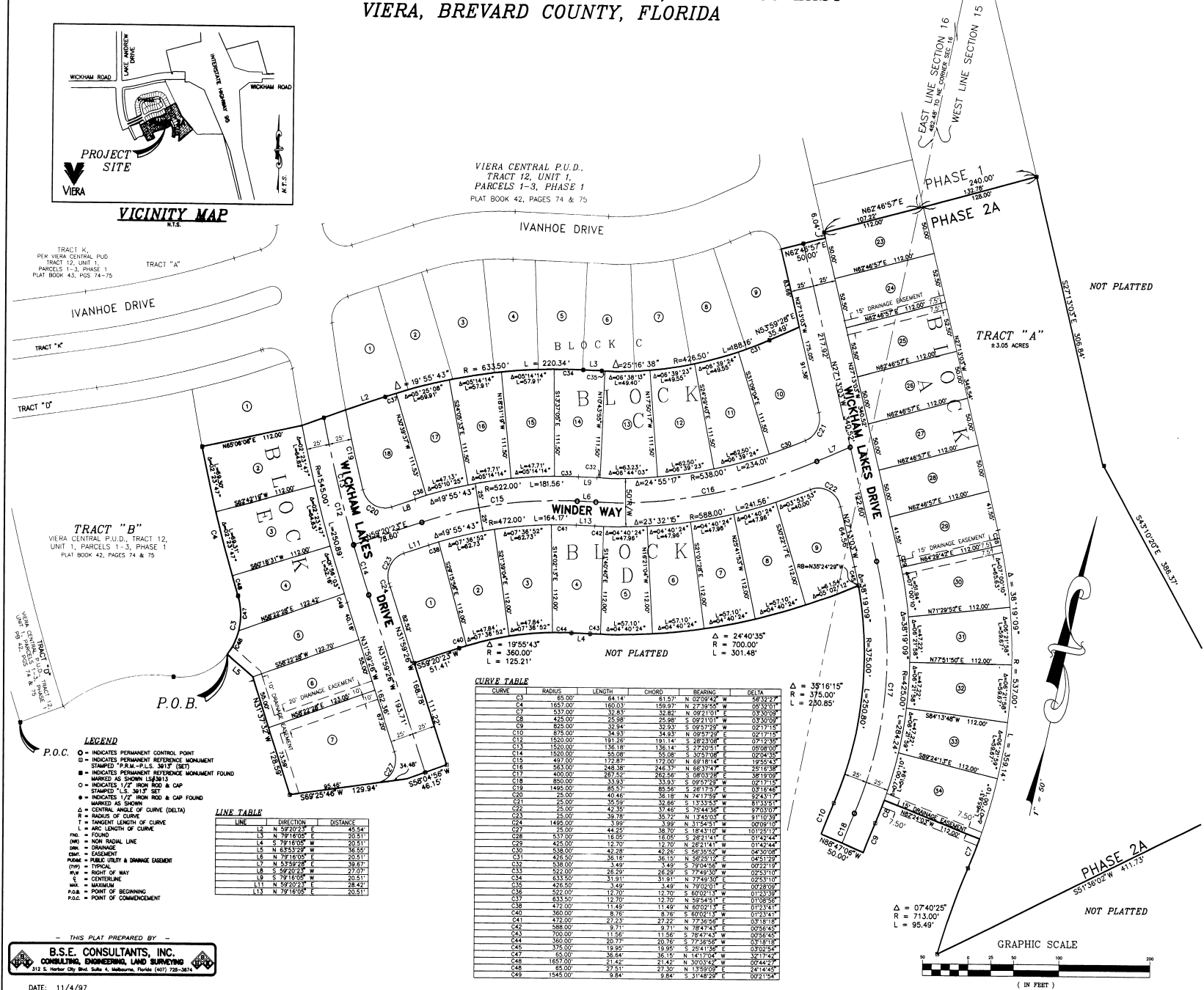
PLAT BOOK 42 PAGE 85
SHEET 2 OF 2
SECTION 15&16 TWP. 26 S., RANGE 36 E.



TRACT "K"
PER VIERA CENTRAL PUD
TRACT 12, UNIT 1,
PARCELS 1-3, PHASE 1
PLAT BOOK 43, PAGES 74-75

TRACT "A"
#3.05 ACRES

TRACT "B"
VIERA CENTRAL P.U.D., TRACT 12,
UNIT 1, PARCELS 1-3, PHASE 1
PLAT BOOK 42, PAGES 74 & 75



CURVE TABLE

CURVE	RADIUS	LENGTH	CHORD	BEARING	DELTA
C1	85.00'	64.14'	61.57'	N 02°09'24" W	88°22'27"
C2	1657.00'	160.63'	159.97'	N 27°39'50" W	20°32'01"
C3	537.00'	32.83'	32.82'	N 09°11'01" E	0°30'09"
C4	428.00'	23.98'	23.98'	S 02°01'01" W	0°30'09"
C5	825.00'	30.94'	30.93'	S 02°57'29" E	0°21'15"
C6	875.00'	34.93'	34.93'	N 88°23'08" E	0°21'15"
C7	1820.00'	191.26'	191.14'	S 88°23'08" E	0°21'15"
C8	1520.00'	136.18'	136.14'	S 72°29'51" E	0°28'00"
C9	1520.00'	136.18'	136.14'	N 07°30'08" E	0°28'00"
C10	497.00'	172.87'	172.80'	N 89°18'14" E	0°55'43"
C11	1449.00'	248.38'	248.37'	N 88°57'47" E	0°21'15"
C12	400.00'	287.52'	282.58'	S 08°03'28" E	88°10'09"
C13	850.00'	33.93'	33.93'	S 09°27'29" W	0°21'15"
C14	1949.00'	35.97'	35.96'	S 88°57'47" E	0°21'15"
C15	25.00'	40.46'	38.18'	N 74°17'59" E	92°43'17"
C16	25.00'	35.95'	33.46'	S 33°33'55" E	0°21'15"
C17	25.00'	42.35'	37.48'	S 75°44'35" E	97°03'07"
C18	65.00'	39.78'	35.75'	N 13°45'03" E	91°10'39"
C19	1495.00'	3.99'	3.99'	N 15°41'51" W	0°29'10"
C20	25.00'	44.25'	38.70'	S 16°43'10" W	101°25'17"
C21	537.00'	15.05'	14.88'	N 02°01'01" E	0°30'09"
C22	425.00'	12.70'	12.70'	N 28°21'41" W	0°14'44"
C23	538.00'	44.28'	42.26'	S 56°59'52" W	06°30'28"
C24	538.00'	44.28'	42.26'	N 28°21'41" W	0°14'44"
C25	538.00'	44.28'	42.26'	S 79°04'36" E	09°21'19"
C26	538.00'	44.28'	42.26'	S 79°04'36" E	09°21'19"
C27	538.00'	44.28'	42.26'	S 79°04'36" E	09°21'19"
C28	538.00'	44.28'	42.26'	S 79°04'36" E	09°21'19"
C29	538.00'	44.28'	42.26'	S 79°04'36" E	09°21'19"
C30	538.00'	44.28'	42.26'	S 79°04'36" E	09°21'19"
C31	538.00'	44.28'	42.26'	S 79°04'36" E	09°21'19"
C32	538.00'	44.28'	42.26'	S 79°04'36" E	09°21'19"
C33	538.00'	44.28'	42.26'	S 79°04'36" E	09°21'19"
C34	538.00'	44.28'	42.26'	S 79°04'36" E	09°21'19"
C35	538.00'	44.28'	42.26'	S 79°04'36" E	09°21'19"
C36	538.00'	44.28'	42.26'	S 79°04'36" E	09°21'19"
C37	538.00'	44.28'	42.26'	S 79°04'36" E	09°21'19"
C38	538.00'	44.28'	42.26'	S 79°04'36" E	09°21'19"
C39	538.00'	44.28'	42.26'	S 79°04'36" E	09°21'19"
C40	538.00'	44.28'	42.26'	S 79°04'36" E	09°21'19"
C41	538.00'	44.28'	42.26'	S 79°04'36" E	09°21'19"
C42	538.00'	44.28'	42.26'	S 79°04'36" E	09°21'19"
C43	538.00'	44.28'	42.26'	S 79°04'36" E	09°21'19"
C44	538.00'	44.28'	42.26'	S 79°04'36" E	09°21'19"
C45	538.00'	44.28'	42.26'	S 79°04'36" E	09°21'19"
C46	538.00'	44.28'	42.26'	S 79°04'36" E	09°21'19"
C47	538.00'	44.28'	42.26'	S 79°04'36" E	09°21'19"
C48	538.00'	44.28'	42.26'	S 79°04'36" E	09°21'19"
C49	538.00'	44.28'	42.26'	S 79°04'36" E	09°21'19"
C50	538.00'	44.28'	42.26'	S 79°04'36" E	09°21'19"

LINE TABLE

LINE	DIRECTION	DISTANCE
L1	N 52°20'23" E	45.54'
L2	N 78°10'05" E	20.51'
L3	S 79°16'05" W	20.51'
L4	N 82°52'29" W	36.54'
L5	N 79°16'05" W	20.51'
L6	N 79°16'05" W	20.51'
L7	N 53°52'29" E	36.67'
L8	S 79°22'24" W	27.07'
L9	S 79°16'05" W	20.51'
L10	N 59°22'29" E	28.42'
L11	N 79°16'05" E	20.51'
L12	N 79°16'05" E	20.51'
L13	N 79°16'05" E	20.51'

- LEGEND**
- INDICATES PERMANENT CONTROL POINT
 - INDICATES PERMANENT REFERENCE MONUMENT
 - ★ MARKED "M-PLUS 3017" SET
 - INDICATES PERMANENT REFERENCE MONUMENT FOUND MARKED AS SHOWN (54301)
 - INDICATES 1/2" IRON ROD & CAP
 - ★ MARKED "AS SHOWN"
 - INDICATES 1/2" IRON ROD & CAP FOUND MARKED AS SHOWN
 - Δ = CENTRAL ANGLE OF CURVE (DELTA)
 - R = RADIUS OF CURVE
 - L = TANGENT LENGTH OF CURVE
 - CH = CHORD LENGTH OF CURVE
 - BE = BEARING
 - ND = NON RADIAL LINE
 - DR = DRAINAGE
 - ES = EASEMENT
 - PK = PUBLIC UTILITY & DRAINAGE EASEMENT
 - TR = TYPICAL
 - TRP = RIGHT OF WAY
 - C = CENTERLINE
 - M = MAXIMUM
 - P.O.B. = POINT OF BEGINNING
 - P.O.C. = POINT OF COMMENCEMENT

THIS PLAT PREPARED BY
B.S.E. CONSULTANTS, INC.
CONSULTING, ENGINEERING, LAND SURVEYING
312 S. Harbor City Blvd., Suite 4, Melbourne, Florida (407) 728-3874

DATE: 11/4/97

B.S.E. DWG # 10063604

