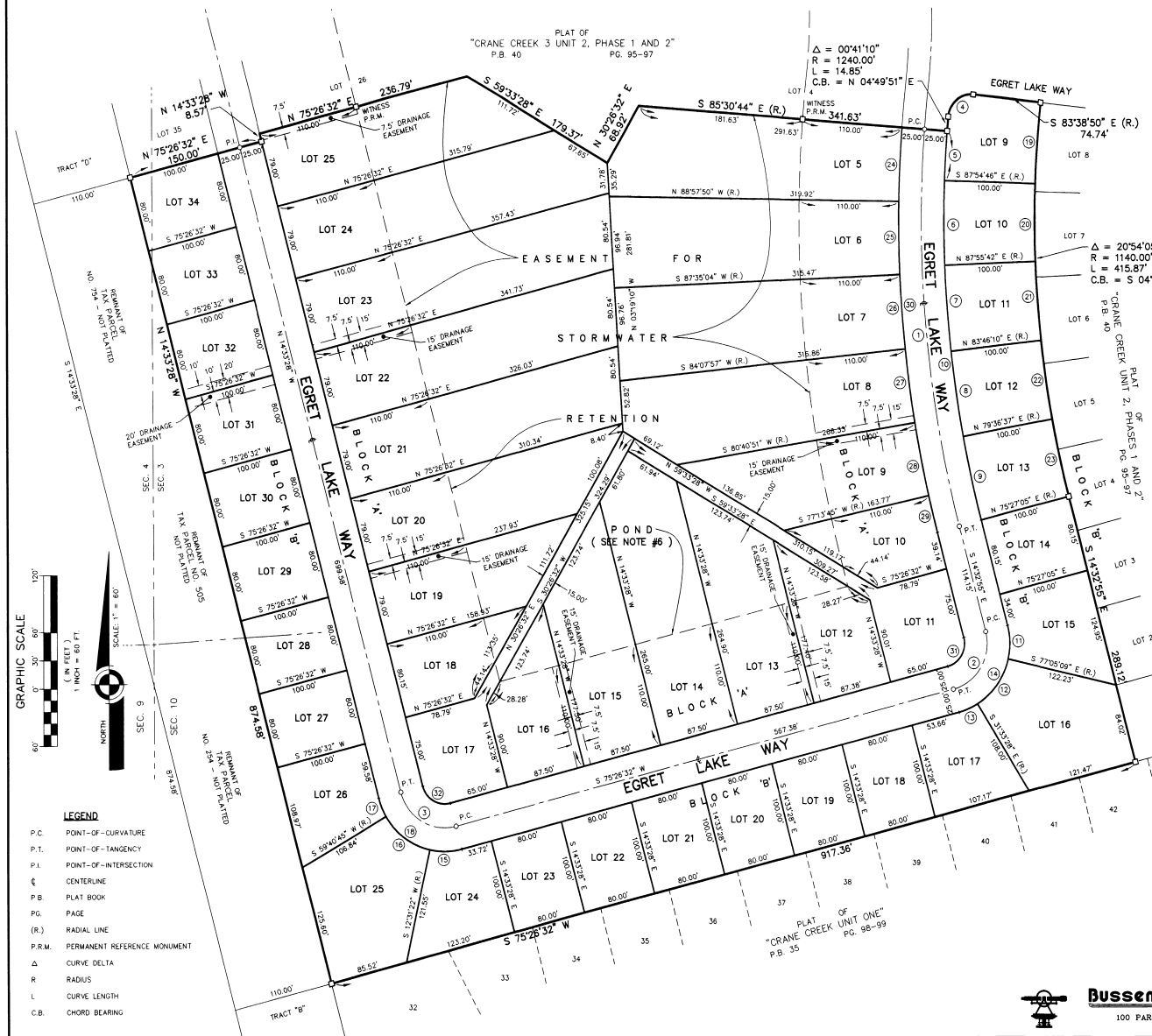


DRAWING NUMBER 43-71

# CRANE CREEK UNIT 2 PHASE 3

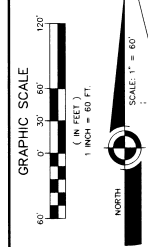
A SUBDIVISION LYING IN SECTIONS 3, 4 AND 10, TOWNSHIP 26 SOUTH, RANGE 36 EAST,  
OF BREVARD COUNTY, FLORIDA, TOGETHER WITH A RE-PLAT OF TRACT "A", PLAT OF  
"CRANE CREEK UNIT 2, PHASES 1 AND 2" (PLAT BOOK 40, PAGES 95 THROUGH 97, INCLUSIVE)

PLAT BOOK 43 PAGE 71  
SHEET 2 OF 2  
SECTION 3, 4 & 10, TWP. 26 S., RANGE 36 E.



CURVE	RADIUS	DELTA	LENGTH	TANGENT	CHORD	BEARING
1	1265.00	1892.11	420.23	212.10	418.36	S 05°01'49" E
2	50.00	8929.21	78.51	49.89	79.71	S 35°28'48" W
3	50.00	9020.00	78.54	50.00	79.71	N 55°33'28" W
4	25.00	9110.44	39.26	25.52	35.72	N 55°16'58" E
5	1240.00	6335.15	68.80	33.41	66.79	S 03°37'50" W
6	1240.00	6439.32	80.01	45.02	89.99	S 00°00'28" W
7	1240.00	6439.32	80.01	45.02	89.99	S 04°29'04" E
8	1240.00	6439.32	80.01	45.02	89.99	S 08°18'30" E
9	1240.00	6439.32	80.01	45.02	89.99	S 12°28'02" E
10	1240.00	1892.11	411.99	207.91	410.01	S 05°01'49" E
11	75.00	2727.46	35.99	18.33	35.61	S 00°49'02" E
12	75.00	4631.41	59.60	31.27	58.04	S 33°40'22" W
13	75.00	17900.00	29.60	11.21	29.17	S 66°56'52" W
14	75.00	8959.27	117.80	74.99	106.06	S 30°28'48" W
15	75.00	2727.46	35.99	18.33	35.61	S 88°58'07" W
16	75.00	4709.23	61.23	32.73	60.00	N 53°33'57" W
17	75.00	1545.47	20.63	10.38	20.57	S 08°18'30" E
18	75.00	9090.00	117.81	75.00	106.01	N 59°33'28" W
19	1140.00	6439.32	84.57	42.45	84.85	S 04°31'24" W
20	1140.00	6439.32	82.75	41.59	82.75	S 04°09'04" E
21	1140.00	6439.32	82.75	41.59	82.75	S 08°18'30" E
22	1140.00	6439.32	82.75	41.59	82.75	S 12°28'02" E
23	1140.00	6439.32	82.75	41.59	82.75	S 16°37'34" E
24	1290.00	6327.06	77.71	38.87	77.70	S 02°45'43" W
25	1290.00	6327.06	77.71	38.87	77.70	S 06°55'10" E
26	1290.00	6327.06	77.71	38.87	77.70	S 11°04'37" E
27	1290.00	6327.06	77.71	38.87	77.70	S 15°14'04" E
28	1290.00	6327.06	77.71	38.87	77.70	S 19°23'31" E
29	1290.00	6327.06	77.71	38.87	77.70	S 23°32'58" E
30	1290.00	6327.06	77.71	38.87	77.70	S 27°42'25" E
31	1290.00	6327.06	77.71	38.87	77.70	S 31°51'52" E
32	25.00	9020.00	39.27	25.00	35.36	N 59°33'28" W

LOT	BLOCK	S.F.	AC.
1	B	17,701.03	0.40
2	B	17,701.03	0.40
3	B	17,701.03	0.40
4	B	17,701.03	0.40
5	B	17,701.03	0.40
6	B	17,701.03	0.40
7	B	17,701.03	0.40
8	B	17,701.03	0.40
9	B	17,701.03	0.40
10	B	17,701.03	0.40
11	B	17,701.03	0.40
12	B	17,701.03	0.40
13	B	17,701.03	0.40
14	B	17,701.03	0.40
15	B	17,701.03	0.40
16	B	17,701.03	0.40
17	B	17,701.03	0.40
18	B	17,701.03	0.40
19	B	17,701.03	0.40
20	B	17,701.03	0.40
21	B	17,701.03	0.40
22	B	17,701.03	0.40
23	B	17,701.03	0.40
24	B	17,701.03	0.40
25	B	17,701.03	0.40
26	B	17,701.03	0.40
27	B	17,701.03	0.40
28	B	17,701.03	0.40
29	B	17,701.03	0.40
30	B	17,701.03	0.40
31	B	17,701.03	0.40
32	B	17,701.03	0.40



- LEGEND**
- P.C. POINT-OF-CURVATURE
  - P.T. POINT-OF-TANGENCY
  - P.I. POINT-OF-INTERSECTION
  - CENTERLINE
  - P.B. PLAT BOOK
  - P.G. PAGE
  - (R.) RADIAL LINE
  - P.R.M. PERMANENT REFERENCE MONUMENT
  - Δ CURVE DELTA
  - R RADIUS
  - L CURVE LENGTH
  - C.B. CHORD BEARING