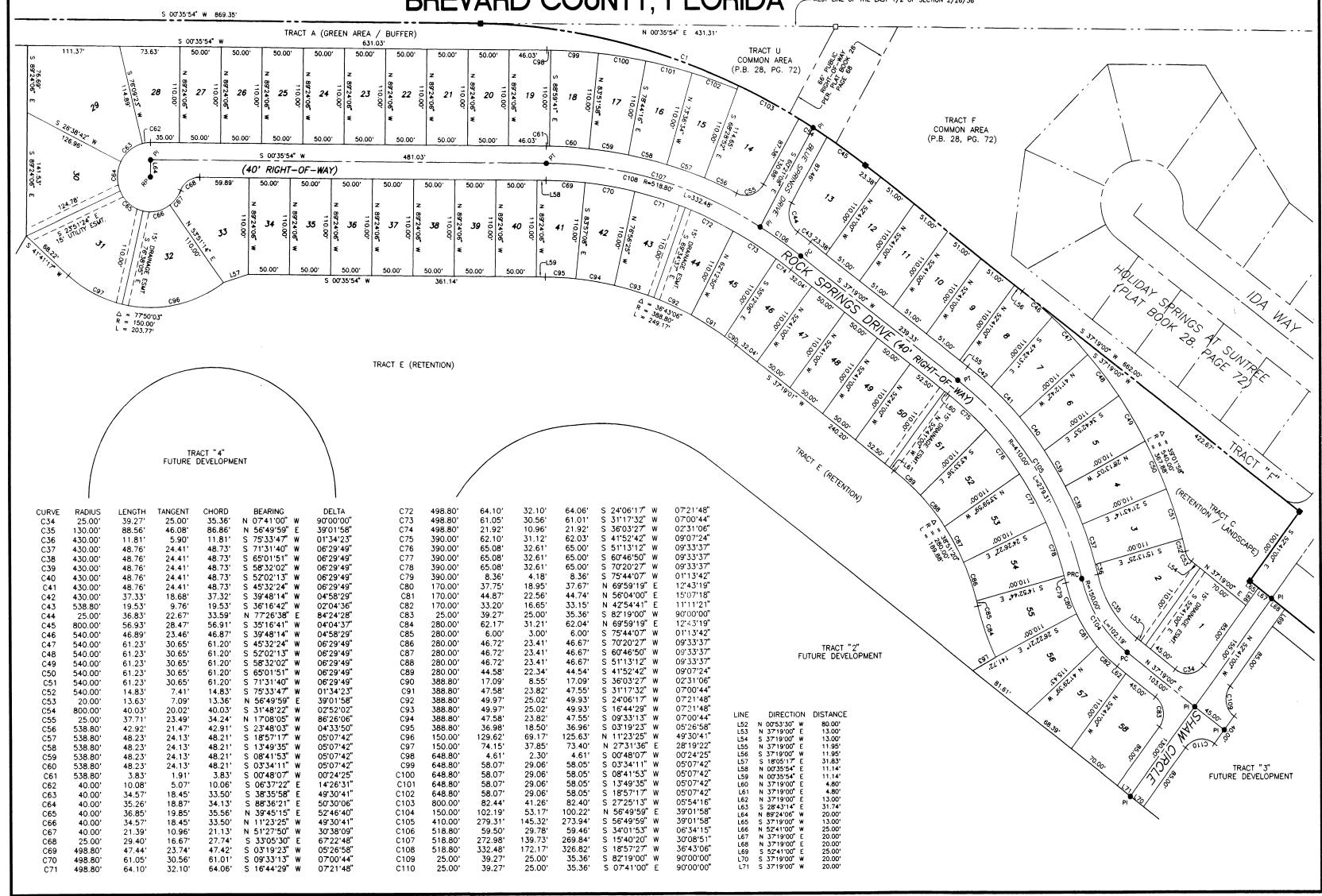
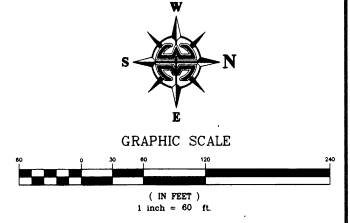


MAGNOLIA SPRINGS

PHASE ONE

A REPLAT OF A PORTION OF
 HOLIDAY SPRINGS AT SUNTREE
 SECTION 2, TOWNSHIP 26 SOUTH, RANGE 36 EAST
 BREVARD COUNTY, FLORIDA



CURVE	RADIUS	LENGTH	TANGENT	CHORD	BEARING	DELTA
C34	25.00'	39.27'	25.00'	35.36'	N 07°41'00" W	90°00'00"
C35	130.00'	88.56'	46.08'	86.86'	N 56°49'59" E	39°01'58"
C36	430.00'	11.81'	5.90'	11.81'	S 75°33'47" W	01°34'23"
C37	430.00'	48.76'	24.41'	48.73'	S 71°31'40" W	06°29'49"
C38	430.00'	48.76'	24.41'	48.73'	S 65°01'51" W	06°29'49"
C39	430.00'	48.76'	24.41'	48.73'	S 58°32'02" W	06°29'49"
C40	430.00'	48.76'	24.41'	48.73'	S 52°02'13" W	06°29'49"
C41	430.00'	48.76'	24.41'	48.73'	S 45°32'24" W	06°29'49"
C42	430.00'	37.33'	18.68'	37.32'	S 39°48'14" W	04°58'29"
C43	538.80'	19.53'	9.76'	19.53'	S 36°16'42" W	02°04'36"
C44	25.00'	36.83'	22.67'	33.59'	N 77°26'38" E	84°24'28"
C45	800.00'	56.93'	28.47'	56.91'	S 35°16'41" W	04°04'37"
C46	540.00'	46.89'	23.46'	46.87'	S 39°48'14" W	04°58'29"
C47	540.00'	61.23'	30.65'	61.20'	S 45°32'24" W	06°29'49"
C48	540.00'	61.23'	30.65'	61.20'	S 52°02'13" W	06°29'49"
C49	540.00'	61.23'	30.65'	61.20'	S 58°32'02" W	06°29'49"
C50	540.00'	61.23'	30.65'	61.20'	S 65°01'51" W	06°29'49"
C51	540.00'	61.23'	30.65'	61.20'	S 71°31'40" W	06°29'49"
C52	540.00'	14.83'	7.41'	14.83'	S 75°33'47" W	01°34'23"
C53	20.00'	13.63'	7.09'	13.63'	N 06°49'59" E	39°01'58"
C54	800.00'	40.03'	20.02'	40.03'	S 31°48'22" W	02°52'02"
C55	25.00'	37.71'	23.49'	34.24'	N 17°08'05" W	86°26'06"
C56	538.80'	42.92'	21.47'	42.91'	S 23°48'03" W	04°33'50"
C57	538.80'	48.23'	24.13'	48.21'	S 18°57'17" W	05°07'42"
C58	538.80'	48.23'	24.13'	48.21'	S 13°49'35" W	05°07'42"
C59	538.80'	48.23'	24.13'	48.21'	S 08°41'53" W	05°07'42"
C60	538.80'	48.23'	24.13'	48.21'	S 03°34'11" W	05°07'42"
C61	538.80'	47.44'	23.74'	47.42'	S 02°24'28" W	05°07'42"
C62	40.00'	10.08'	5.07'	10.06'	S 06°37'22" E	14°26'31"
C63	40.00'	34.57'	18.45'	33.50'	S 38°35'58" E	49°30'41"
C64	40.00'	35.26'	18.87'	34.13'	S 88°36'21" E	50°30'06"
C65	40.00'	36.89'	19.85'	35.68'	N 59°45'15" E	52°46'58"
C66	40.00'	34.57'	18.45'	33.50'	N 11°23'26" W	49°30'41"
C67	40.00'	21.39'	10.96'	21.13'	N 51°27'50" W	30°38'09"
C68	25.00'	39.40'	16.87'	27.74'	S 33°05'30" E	67°22'48"
C69	498.80'	47.44'	23.74'	47.42'	S 02°24'28" W	05°07'42"
C70	498.80'	61.05'	30.56'	61.01'	S 09°33'13" W	07°00'44"
C71	498.80'	64.10'	32.10'	64.06'	S 16°44'29" W	07°21'48"
C72	498.80'	64.10'	32.10'	64.06'	S 24°06'17" W	07°21'48"
C73	498.80'	61.05'	30.56'	61.01'	S 31°17'32" W	07°00'44"
C74	498.80'	21.92'	10.96'	21.92'	S 36°03'27" W	02°31'06"
C75	390.00'	62.10'	31.12'	62.03'	S 41°52'42" W	09°07'24"
C76	390.00'	65.08'	32.61'	65.00'	S 51°13'12" W	09°33'37"
C77	390.00'	65.08'	32.61'	65.00'	S 60°46'50" W	09°33'37"
C78	390.00'	65.08'	32.61'	65.00'	S 70°20'27" W	09°33'37"
C79	390.00'	8.36'	4.18'	8.36'	S 75°44'07" W	01°13'42"
C80	170.00'	37.75'	18.95'	37.67'	N 69°59'18" E	12°43'16"
C81	170.00'	44.87'	22.56'	44.74'	N 56°04'00" E	15°07'18"
C82	170.00'	33.20'	16.65'	33.15'	N 42°54'41" E	11°11'21"
C83	25.00'	39.27'	25.00'	35.36'	S 75°33'47" W	01°34'23"
C84	280.00'	62.17'	31.21'	62.04'	N 69°59'18" E	12°43'16"
C85	280.00'	6.00'	3.00'	6.00'	S 75°44'07" W	01°13'42"
C86	280.00'	46.72'	23.41'	46.67'	S 70°20'27" W	09°33'37"
C87	280.00'	46.72'	23.41'	46.67'	S 60°46'50" W	09°33'37"
C88	280.00'	46.72'	23.41'	46.67'	S 51°13'12" W	09°33'37"
C89	280.00'	44.58'	22.34'	44.54'	S 41°52'42" W	09°07'24"
C90	388.80'	17.09'	8.55'	17.09'	S 36°03'27" W	02°31'06"
C91	388.80'	47.58'	23.82'	47.55'	S 31°17'32" W	07°00'44"
C92	388.80'	49.97'	25.02'	49.93'	S 24°06'17" W	07°21'48"
C93	388.80'	49.97'	25.02'	49.93'	S 16°44'29" W	07°21'48"
C94	388.80'	47.58'	23.82'	47.55'	S 09°33'13" W	07°00'44"
C95	388.80'	36.98'	18.50'	36.96'	S 03°19'23" W	05°26'56"
C96	150.00'	126.62'	69.17'	126.63'	N 11°23'26" W	49°30'41"
C97	150.00'	74.15'	37.85'	73.40'	N 27°31'36" E	28°19'22"
C98	648.80'	4.61'	2.30'	4.61'	S 00°48'07" W	00°24'25"
C99	648.80'	58.07'	29.06'	58.05'	S 03°34'11" W	05°07'42"
C100	648.80'	58.07'	29.06'	58.05'	S 08°41'53" W	05°07'42"
C101	648.80'	58.07'	29.06'	58.05'	S 13°49'35" W	05°07'42"
C102	648.80'	58.07'	29.06'	58.05'	S 18°57'17" W	05°07'42"
C103	800.00'	82.44'	41.26'	82.40'	S 27°25'13" W	05°54'16"
C104	800.00'	102.44'	51.17'	102.22'	N 58°49'59" W	39°01'58"
C105	410.00'	279.31'	145.32'	273.94'	S 56°49'59" W	39°01'58"
C106	518.80'	59.50'	29.78'	59.46'	S 34°01'53" W	06°34'15"
C107	518.80'	272.99'	139.73'	269.84'	S 15°40'20" W	33°08'51"
C108	618.80'	332.48'	172.17'	328.82'	S 18°57'27" W	36°43'06"
C109	25.00'	39.27'	25.00'	35.36'	S 82°19'00" W	80°00'00"
C110	25.00'	39.27'	25.00'	35.36'	S 07°41'00" E	90°00'00"

LINE	DIRECTION	DISTANCE
L52	N 07°23'57" W	80.00'
L53	N 37°19'00" E	13.00'
L54	S 37°19'00" W	13.00'
L55	N 37°19'00" E	11.95'
L56	S 18°05'17" E	31.83'
L57	S 37°19'00" W	11.95'
L58	N 00°35'54" E	11.14'
L59	N 00°35'54" E	11.14'
L60	N 37°19'00" E	4.80'
L61	N 37°19'00" E	4.80'
L62	N 37°19'00" E	13.00'
L63	S 28°14'14" E	31.74'
L64	N 82°49'00" W	20.00'
L65	S 37°19'00" E	13.00'
L66	N 52°41'00" W	25.00'
L67	N 37°19'00" E	20.00'
L68	N 37°19'00" E	20.00'
L69	S 52°41'00" W	25.00'
L70	S 37°19'00" W	20.00'
L71	S 37°19'00" W	20.00'