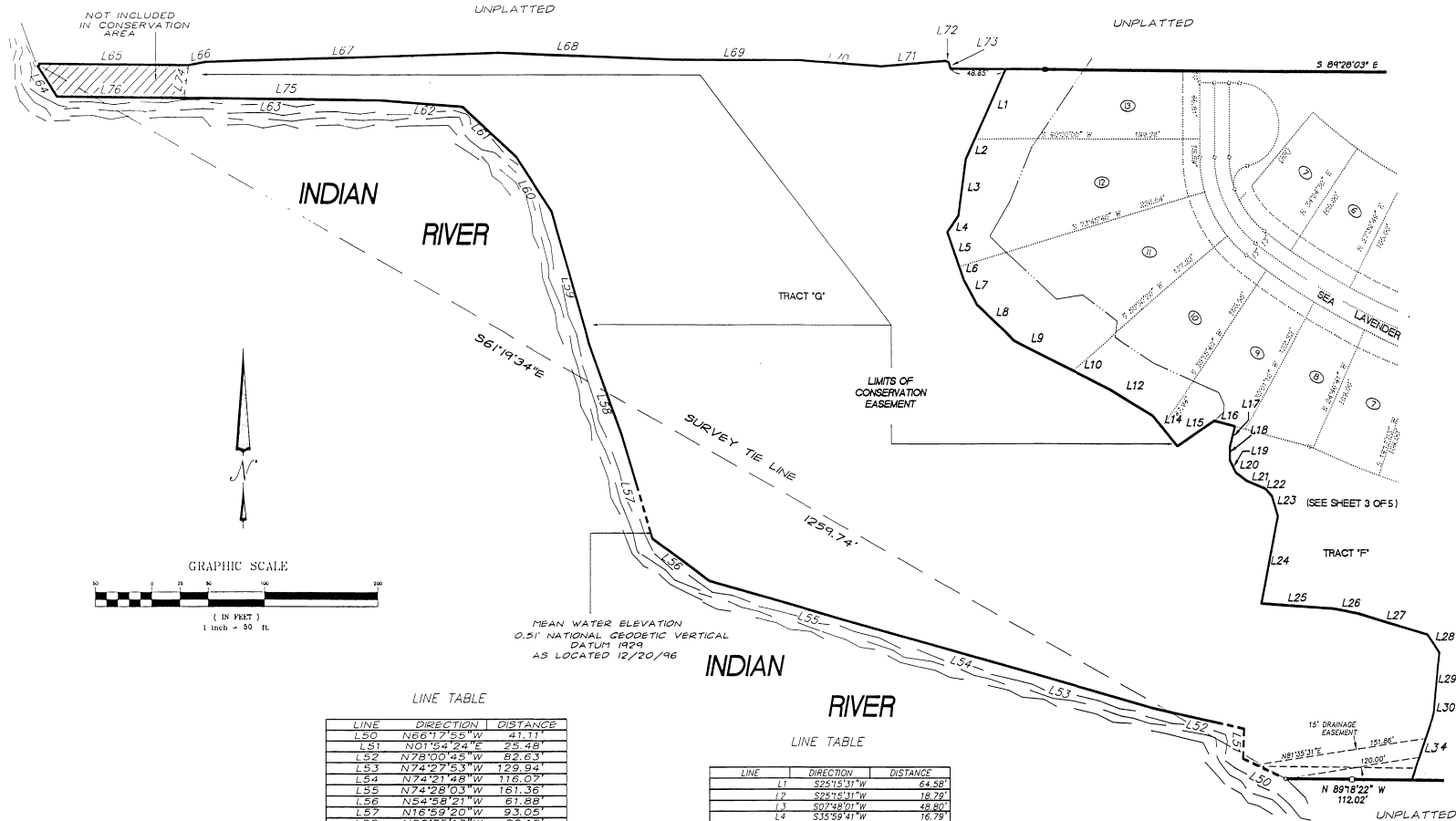


SOUTH SHORES PHASE III

A REPLAT OF A PORTION OF SOUTH SHORES RIVERSIDE
AS RECORDED IN PLAT BOOK 32, PAGES 10-13, BREVARD COUNTY, FLORIDA
AND LYING IN SECTION 10, TOWNSHIP 29 SOUTH, RANGE 38 EAST.

PLAT BOOK 43 AND PAGE 45
SHEET 4 OF 5
SECTION 10, TWP. 29S., RANGE 38E.



LINE TABLE

LINE	DIRECTION	DISTANCE
L50	N66°17'55"W	41.11'
L51	N01°54'24"E	25.48'
L52	N28°00'45"W	82.83'
L53	N74°27'53"W	129.94'
L54	N74°21'48"W	116.07'
L55	N74°28'03"W	161.36'
L56	N54°58'21"W	61.86'
L57	N16°59'20"W	93.05'
L58	N20°35'13"W	82.12'
L59	N16°31'52"W	115.31'
L60	N34°02'02"W	55.97'
L61	N49°12'35"W	62.82'
L62	N85°41'57"W	73.01'
L63	N89°28'03"W	286.29'
L64	N33°58'19"W	33.24'
L65	S89°28'03"E	134.86'
L66	N79°12'27"E	15.00'
L67	N88°12'27"E	259.00'
L68	S47°17'33"E	153.00'
L69	S89°17'33"E	115.00'
L70	S85°47'33"E	72.00'
L71	N85°12'27"E	57.00'
L72	S67°47'33"E	3.00'
L73	S17°47'33"E	6.00'
L74	N10°24'08"E	27.94'
L75	N89°28'03"W	174.04'
L76	N89°28'03"W	112.24'

LINE TABLE

LINE	DIRECTION	DISTANCE
L1	S25°15'31"W	64.58'
L2	S25°15'31"W	18.79'
L3	S07°48'01"W	48.80'
L4	S35°59'41"W	16.79'
L5	S19°37'04"E	31.19'
L6	S19°37'04"E	12.23'
L7	S29°19'21"E	24.16'
L8	S47°59'08"E	43.28'
L9	S64°16'04"E	31.89'
L10	S64°21'20"E	63.41'
L11	S59°17'50"E	42.66'
L12	S40°09'46"E	33.90'
L13	N56°19'27"E	39.12'
L14	S75°27'38"E	18.88'
L15	S14°32'20"W	17.60'
L16	S00°49'00"W	11.86'
L17	S76°37'41"E	11.86'
L18	S54°04'22"E	11.86'
L19	S67°47'43"E	17.73'
L20	S42°39'57"E	8.49'
L21	S12°32'12"E	17.84'
L22	S11°12'04"W	75.30'
L23	S85°46'21"E	64.89'
L24	S79°24'30"E	22.17'
L25	S73°21'44"E	63.19'
L26	S33°54'19"E	19.06'
L27	S05°33'06"W	51.18'
L28	S14°53'28"W	8.08'
L29	S19°31'27"W	31.80'

PLAT PREPARED BY

B LAND SURVEYORS AND CONSULTANTS
1300 PINETREE DRIVE SUITE 11
INDIAN HARBOUR BEACH FL. 32939
(407)779-0700 FAX (407)779-4444



C LAND SURVEYING / LAND PLATTING

NOTICE: THERE MAY BE ADDITIONAL RESTRICTIONS THAT ARE NOT RECORDED ON THIS PLAT THAT MAY BE FOUND IN THE PUBLIC RECORDS OF THIS COUNTY.