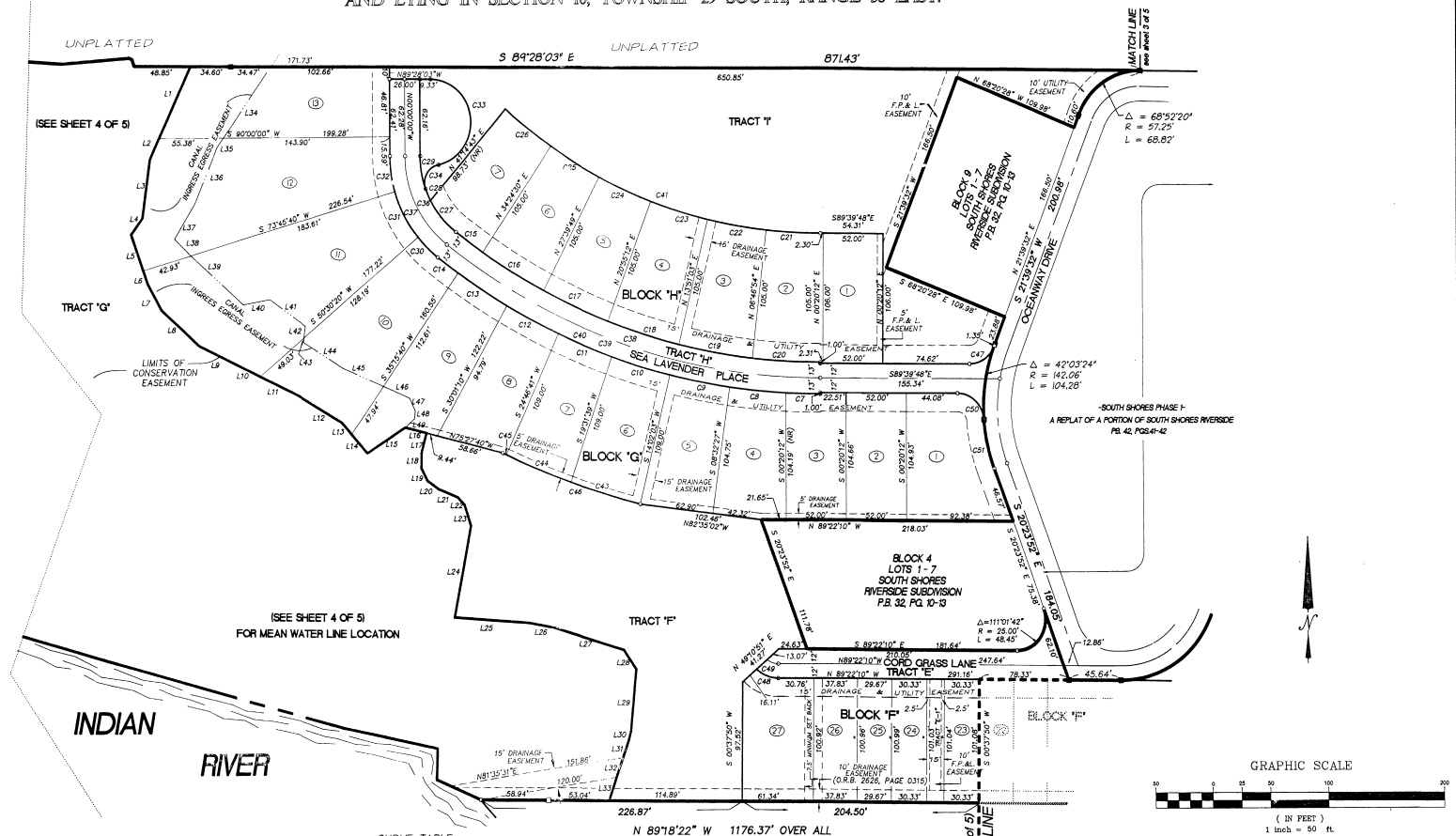


# SOUTH SHORES PHASE II

A REPLAT OF A PORTION OF SOUTH SHORES RIVERSIDE  
AS RECORDED IN PLAT BOOK 32, PAGES 10-13, BREVARD COUNTY, FLORIDA  
AND LYING IN SECTION 10, TOWNSHIP 29 SOUTH, RANGE 38 EAST.

PLAT BOOK 43 AND PAGE 44  
SHEET 3 OF 5  
SECTION 10, TW. 29 S., RANGE 38 E.



CURVE TABLE

CURVE	RADIUS	LENGTH	TANGENT	CHORD	BEARING	DELTA
C7	448.00'	59.31'	14.61'	29.50'	S89°12'21" W	03°05'06"
C8	548.00'	48.96'	22.50'	48.84'	S84°10'00" E	08°37'03"
C9	548.00'	55.54'	26.29'	53.52'	S71°13'00" E	05°19'17"
C10	548.00'	50.71'	25.17'	50.12'	S65°16'00" E	05°24'59"
C11	548.00'	50.11'	25.08'	50.12'	S67°12'35" E	05°24'50"
C12	548.00'	71.64'	32.03'	61.86'	S63°15'00" E	05°24'50"
C13	522.00'	28.62'	14.30'	28.62'	S54°12'20" E	03°08'21"
C14	522.00'	61.60'	30.28'	61.60'	S88°32'20" E	05°24'50"
C15	522.00'	61.44'	30.75'	61.40'	S86°37'20" E	05°24'41"
C16	522.00'	64.40'	32.64'	64.16'	S72°41'00" E	07°04'09"
C17	522.00'	68.71'	35.38'	68.68'	S86°12'21" E	05°24'50"
C18	522.00'	68.71'	35.38'	68.68'	S86°12'21" E	05°24'50"
C19	472.00'	51.24'	25.78'	51.24'	S79°41'00" E	07°04'09"
C20	472.00'	61.40'	30.76'	61.40'	S72°41'00" E	07°04'09"
C21	472.00'	48.08'	24.57'	49.08'	S65°42'20" E	07°04'09"
C22	472.00'	49.70'	24.91'	49.73'	S55°10'24" E	06°50'13"
C23	79.00'	34.33'	17.44'	34.06'	S40°02'00" E	24°34'08"
C24	102.00'	10.30'	5.14'	10.23'	S23°10'00" E	07°04'09"
C25	79.00'	27.24'	13.56'	27.20'	S16°01'00" E	20°32'41"
C26	102.00'	10.30'	5.14'	10.23'	S45°10'00" E	07°04'09"
C27	102.00'	42.62'	21.41'	42.43'	S27°32'00" E	05°24'50"
C28	102.00'	42.62'	21.41'	42.43'	S27°32'00" E	05°24'50"
C29	102.00'	29.76'	14.88'	29.63'	N05°11'49" W	16°04'29"
C30	102.00'	102.61'	51.30'	102.61'	S71°10'00" E	17°32'14"
C31	125.00'	26.81'	13.40'	26.74'	S29°12'51" W	06°19'06"
C32	125.00'	84.42'	42.21'	84.42'	S45°10'00" E	17°32'14"
C33	102.00'	102.61'	51.30'	102.61'	N05°11'49" W	16°04'29"
C34	125.00'	26.81'	13.40'	26.74'	S29°12'51" W	06°19'06"
C35	125.00'	84.42'	42.21'	84.42'	S45°10'00" E	17°32'14"
C36	102.00'	102.61'	51.30'	102.61'	S71°10'00" E	17°32'14"
C37	102.00'	102.61'	51.30'	102.61'	S71°10'00" E	17°32'14"
C38	102.00'	102.61'	51.30'	102.61'	S71°10'00" E	17°32'14"
C39	102.00'	102.61'	51.30'	102.61'	S71°10'00" E	17°32'14"
C40	102.00'	102.61'	51.30'	102.61'	S71°10'00" E	17°32'14"
C41	102.00'	102.61'	51.30'	102.61'	S71°10'00" E	17°32'14"
C42	102.00'	102.61'	51.30'	102.61'	S71°10'00" E	17°32'14"
C43	102.00'	102.61'	51.30'	102.61'	S71°10'00" E	17°32'14"
C44	102.00'	102.61'	51.30'	102.61'	S71°10'00" E	17°32'14"
C45	102.00'	102.61'	51.30'	102.61'	S71°10'00" E	17°32'14"
C46	102.00'	102.61'	51.30'	102.61'	S71°10'00" E	17°32'14"
C47	102.00'	102.61'	51.30'	102.61'	S71°10'00" E	17°32'14"
C48	102.00'	102.61'	51.30'	102.61'	S71°10'00" E	17°32'14"
C49	102.00'	102.61'	51.30'	102.61'	S71°10'00" E	17°32'14"
C50	102.00'	102.61'	51.30'	102.61'	S71°10'00" E	17°32'14"
C51	102.00'	102.61'	51.30'	102.61'	S71°10'00" E	17°32'14"
C52	102.00'	102.61'	51.30'	102.61'	S71°10'00" E	17°32'14"
C53	102.00'	102.61'	51.30'	102.61'	S71°10'00" E	17°32'14"
C54	102.00'	102.61'	51.30'	102.61'	S71°10'00" E	17°32'14"
C55	102.00'	102.61'	51.30'	102.61'	S71°10'00" E	17°32'14"
C56	102.00'	102.61'	51.30'	102.61'	S71°10'00" E	17°32'14"
C57	102.00'	102.61'	51.30'	102.61'	S71°10'00" E	17°32'14"
C58	102.00'	102.61'	51.30'	102.61'	S71°10'00" E	17°32'14"
C59	102.00'	102.61'	51.30'	102.61'	S71°10'00" E	17°32'14"
C60	102.00'	102.61'	51.30'	102.61'	S71°10'00" E	17°32'14"
C61	102.00'	102.61'	51.30'	102.61'	S71°10'00" E	17°32'14"

LINE TABLE

LINE	DIRECTION	DISTANCE
L1	S25°14'41" W	64.28'
L2	S13°14'41" W	18.29'
L3	S07°48'01" W	48.80'
L4	S13°53'01" W	16.79'
L5	S19°12'02" E	31.12'
L6	S19°12'02" E	12.24'
L7	S19°12'02" E	44.16'
L8	S64°42'04" E	31.89'
L9	S64°42'04" E	26.20'
L10	S64°42'04" E	37.21'
L11	S39°17'50" E	62.86'
L12	S40°02'00" E	12.88'
L13	S45°10'00" E	12.88'
L14	N49°09'48" W	21.03'
L15	S45°10'00" E	38.15'
L16	S75°27'58" E	18.88'
L17	S12°32'20" W	17.60'
L18	S00°48'00" W	11.86'
L19	S26°13'47" E	11.86'
L20	S45°10'00" E	11.86'
L21	S27°43'13" E	17.73'
L22	N43°39'57" W	8.49'
L23	S37°12'12" E	17.84'
L24	S11°29'04" W	75.30'
L25	S85°48'21" E	64.89'

LINE TABLE

L26	N19°24'30" W	22.17'
L27	S73°14'44" E	43.79'
L28	S13°54'19" E	19.06'
L29	S05°13'08" W	51.18'
L30	N14°39'02" E	87.08'
L31	N19°31'22" E	14.76'
L32	S19°12'27" W	16.96'
L33	S19°12'27" W	20.00'
L34	S10°11'21" W	20.42'
L35	S24°42'00" E	45.80'
L36	S24°42'00" E	34.16'
L37	S11°24'19" W	14.76'
L38	S25°14'41" E	19.79'
L39	S48°18'42" E	60.16'
L40	S19°12'27" W	23.47'
L41	S24°42'00" E	37.65'
L42	S08°22'01" W	9.87'
L43	S08°22'01" W	3.94'
L44	S24°42'00" E	40.89'
L45	S05°13'08" W	37.63'
L46	S88°17'42" E	24.29'
L47	S24°42'00" E	17.27'
L48	S19°12'27" W	17.84'
L49	S48°22'42" W	10.92'

- LEGEND**
- = FOUND NAL & DISK PCP
  - = SET P.C.P. #4505
  - = FOUND P.R.M. PREVIOUSLY SET #4505
  - = SET P.R.M. #4505
  - D & U = DRAINAGE AND UTILITY
  - P.O.C. = POINT OF BEGINNING
  - P.O.C. = POINT OF COMMENCEMENT
  - LOT LINES ARE RADIAL UNLESS OTHERWISE INDICATED BY (N.A.)

**PLAT PREPARED BY**

**B** LAND SURVEYORS AND CONSULTANTS  
1800 PINETREE DRIVE SUITE II  
INDIAN HARBOUR BEACH FL. 32937  
(407)79-0000 FAX (407)73-6444

**C** LAND SURVEYING / LAND PLATTING

NOTICE: THERE MAY BE ADDITIONAL RESTRICTIONS THAT ARE NOT RECORDED ON THIS PLAT THAT MAY BE FOUND IN THE PUBLIC RECORDS OF THIS COUNTY.