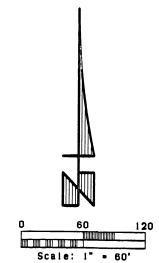


SANDY PINES PRESERVE, PHASE 1

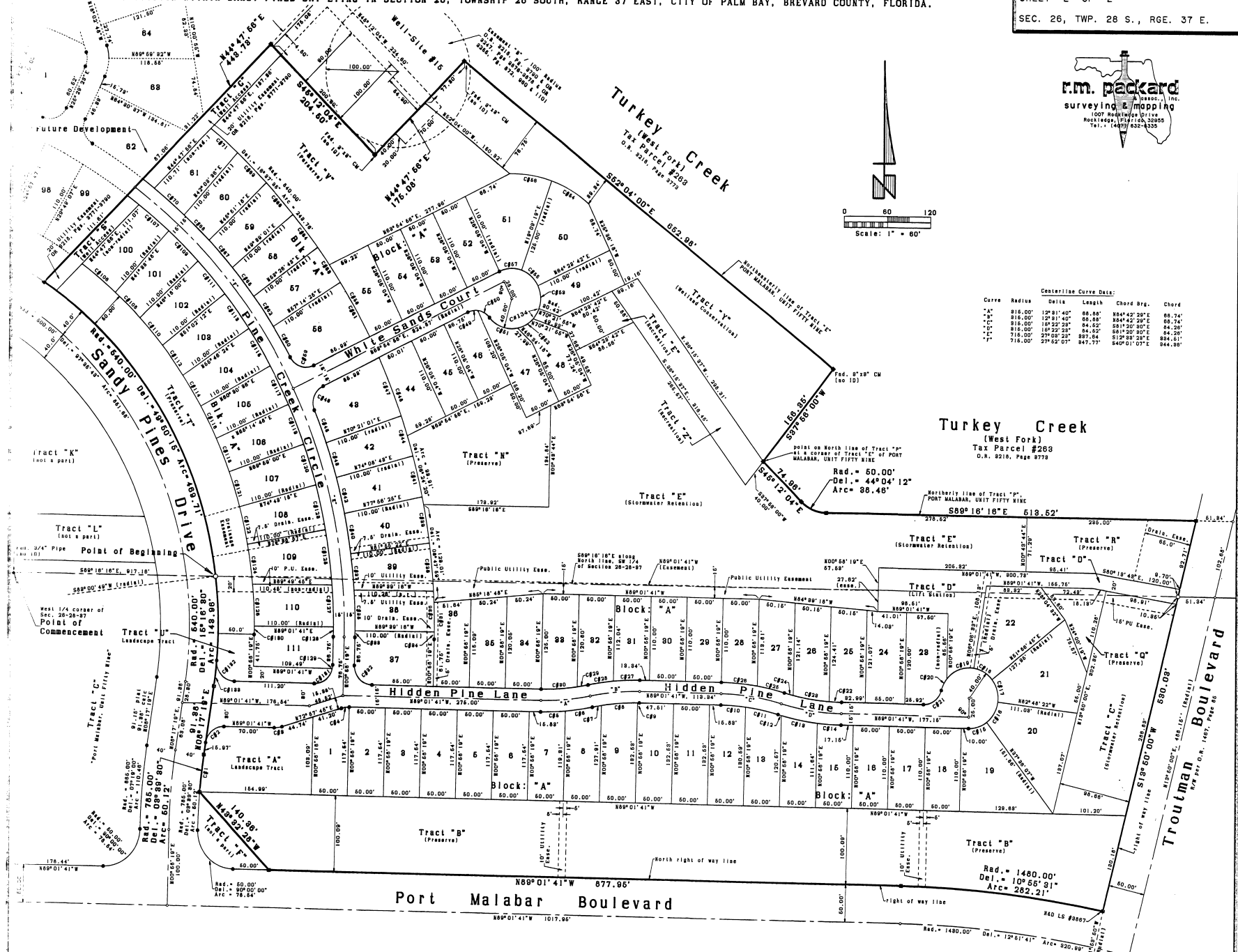
A SUBDIVISION WITHIN SANDY PINES DRIVE LYING IN SECTION 28, TOWNSHIP 28 SOUTH, RANGE 37 EAST, CITY OF PALM BAY, BREVARD COUNTY, FLORIDA.

PLAT BOOK 43 PAGE 37
SHEET 2 OF 2
SEC. 26, TWP. 28 S., RGE. 37 E.



Centerline Curve Data:

Curve	Radius	Delta	Length	Chord	Chord Brg.
C1	60.00'	12°04'40"	86.86'	884°42'28"	88.74'
C2	60.00'	12°04'40"	86.86'	884°42'28"	88.74'
C3	60.00'	16°23'28"	84.62'	891°20'00"	84.26'
C4	60.00'	16°23'28"	84.62'	891°20'00"	84.26'
C5	60.00'	27°08'28"	87.84'	878°28'28"	84.61'
C6	60.00'	27°08'28"	87.77'	840°01'07"	84.80'



43-37