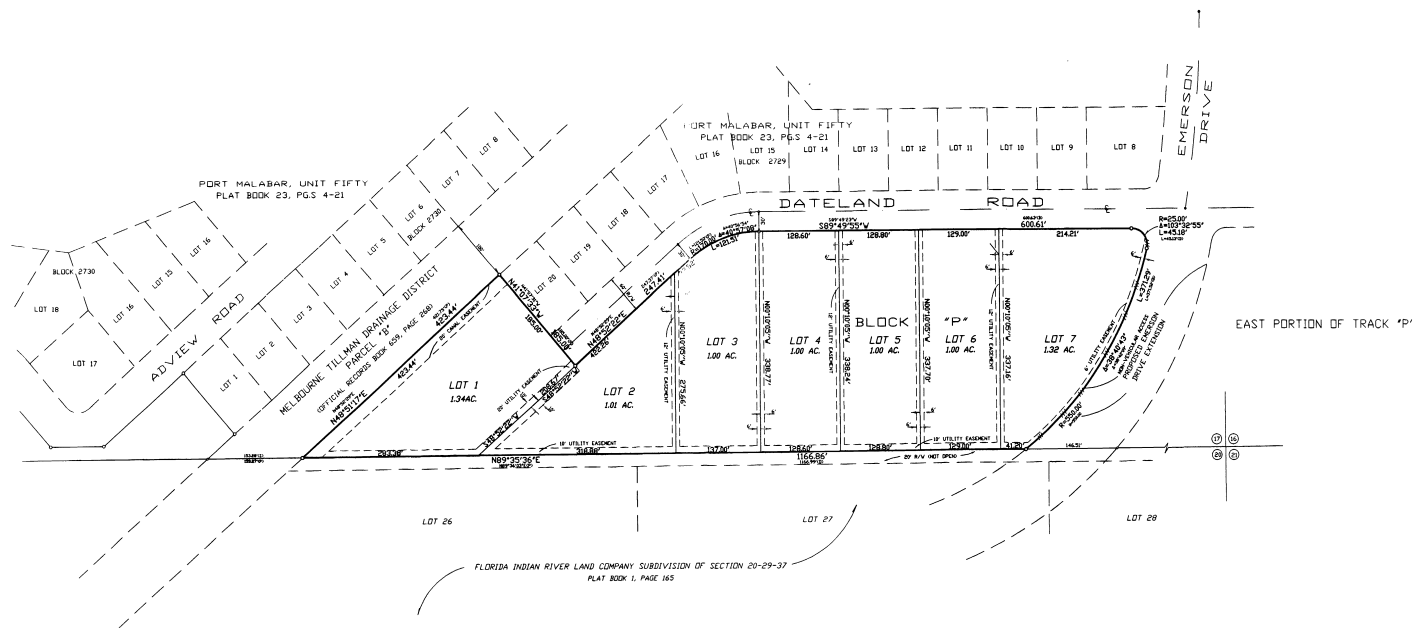
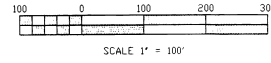


PINE RIDGE ESTATES PHASE NO. 1

A PLAT OF A PORTION OF SECTIONS 17 & 18, TOWNSHIP 29 SOUTH, RANGE 37 EAST
 AND BEING A REPLAT OF A PORTIONS OF TRACT "P" OF PORT MALABAR
 UNIT FIFTY AS RECORDED IN PLAT BOOK 23, PAGES 4 THRU 21 OF THE PUBLIC
 RECORDS OF BREVARD COUNTY, FLORIDA
 CITY OF PALM BAY BREVARD COUNTY, FLORIDA



- LEGEND**
- R = RADIUS
 - ∠ = CENTRAL ANGLE
 - L = ARC LENGTH
 - R/W = RIGHT OF WAY
 - ⊙ = SET IRON
 - ⊙ = SET NAIL AND CAP
 - SIW = SET IRON ROD NO. 3444
 - FCM = FOUND CONCRETE MONUMENT
 - FIR = FOUND IRON ROD
 - PBS = POINT OF BEGINNING
 - PBC = POINT OF COMMENCEMENT
 - (PT) = PLAT
 - (S) = SURVEY
 - (C) = CALCULATED
 - (S) = SET
 - PLS = PROFESSIONAL LAND SURVEYOR
 - PRM = PERMANENT REFERENCE MONUMENT
 - PE = PLAT BOOK
 - PE = PAGE
 - OR = OFFICIAL RECORDS
 - CM = SET CONCRETE MONUMENT
 - CL = CENTERLINE
 - EDM = EDGE OF PAVEMENT
 - — — = NON-VEHICULAR ACCESS LINE

THIS INSTRUMENT WAS PREPARED BY:
Ralph B. Benuzzi & Associates, Inc.
 Consulting Engineers, Planners, Surveyors
 6100 Boulevard of Champions
 North Lauderdale, Florida 33068
 (954) 969-5100
 FAX (954) 969-9680