

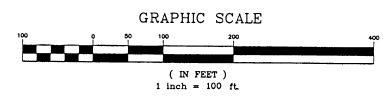
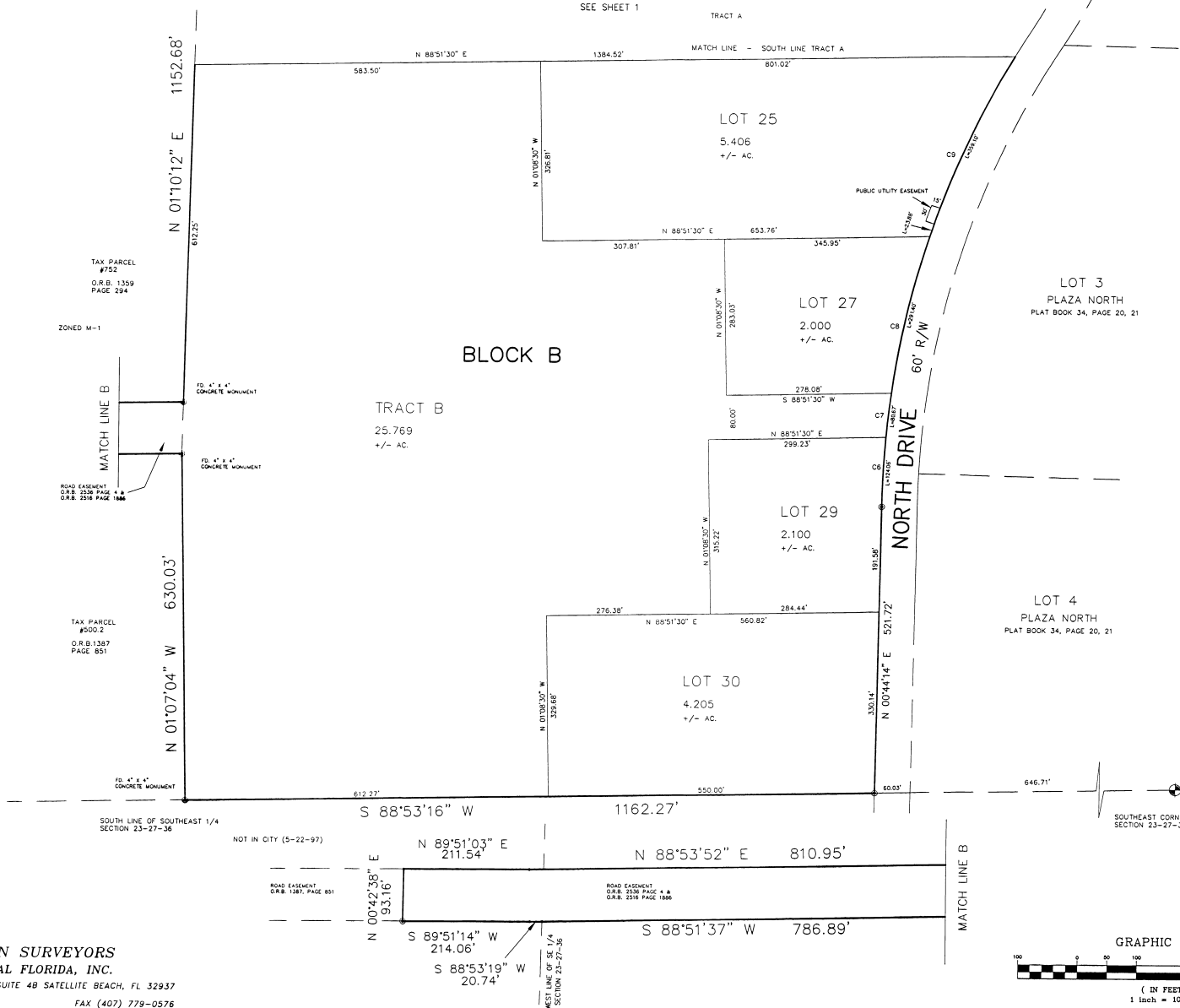
NORTH DRIVE INDUSTRIAL PLAZA

A RESUBDIVISION OF
 LOTS 1, 5, & TRACT A
 PLAZA NORTH
 PLAT BOOK 34 AT PAGES 20-21
 SECTION 23, TOWNSHIP 27 SOUTH, RANGE 36 EAST
 CITY OF MELBOURNE, BREVARD COUNTY, FLORIDA

PLAT BOOK 43 PAGE 29
 SHEET 2 OF 2
 SECTION 23, TWP. 27 S., RGE. 36 E.

SHEET 2 OF 2 JUNE 1997

CURVE	RADIUS	LENGTH	TANGENT	CHORD	BEARING	DELTA
C6	1730.00'	174.08'	65.38'	124.04'	S 02°47'30" W	04°00'11"
C7	1730.00'	35.67'	13.54'	30.59'	S 00°10'54" W	07°20'18"
C8	1730.00'	293.40'	146.04'	291.05'	N 12°20'54" E	08°38'03"
C9	1730.00'	353.19'	180.20'	358.48'	N 23°05'53" E	11°53'55"



**HORIZON SURVEYORS
 OF CENTRAL FLORIDA, INC.**
 476 HIGHWAY A-1-A SUITE 4B SATELLITE BEACH, FL 32937
 (407) 779-0549 FAX (407) 779-0576