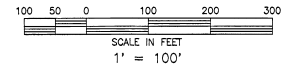
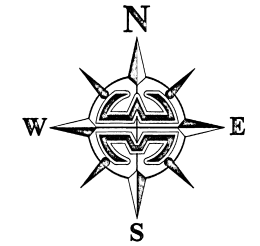


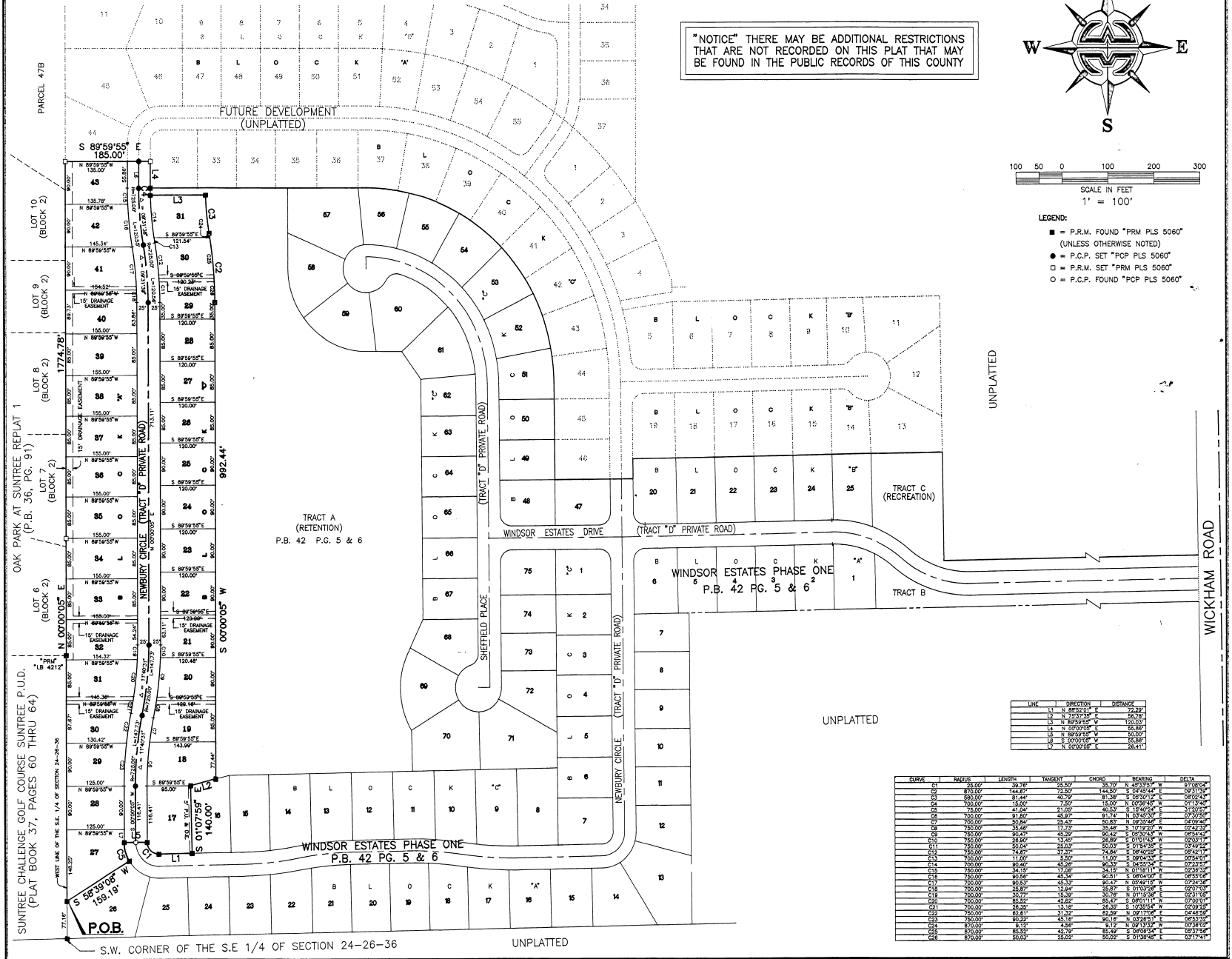
WINDSOR ESTATES PHASE TWO

A PRIVATE SUBDIVISION LYING IN
SECTION 24, TOWNSHIP 26 SOUTH, RANGE 36 EAST
BREVARD COUNTY, FLORIDA

"NOTICE" THERE MAY BE ADDITIONAL RESTRICTIONS
THAT ARE NOT RECORDED ON THIS PLAT THAT MAY
BE FOUND IN THE PUBLIC RECORDS OF THIS COUNTY



- LEGEND:
- = P.R.M. FOUND "PRM PLS 5060" (UNLESS OTHERWISE NOTED)
 - = P.C.P. SET "PCP PLS 5060"
 - = P.R.M. SET "PRM PLS 5060"
 - = P.C.P. FOUND "PCP PLS 5060"



LINE	DIRECTION	DISTANCE
11	N 89°59'55" E	22.29'
12	N 90°00'00" W	120.00'
13	N 89°59'55" W	120.00'
14	N 90°00'00" W	120.00'
15	N 89°59'55" W	50.00'
16	S 00°00'00" W	5.86'
17	N 90°00'00" E	26.41'

CURVE	RADIUS	LENGTH	TANGENT	CHORD	BEARING	DELTA
01	1000.00'	100.00'	100.00'	100.00'	90.00°	90.00°
02	1000.00'	141.42'	100.00'	141.42'	45.00°	90.00°
03	1000.00'	157.08'	100.00'	157.08'	30.00°	90.00°
04	1000.00'	167.56'	100.00'	167.56'	22.50°	90.00°
05	1000.00'	173.24'	100.00'	173.24'	18.43°	90.00°
06	1000.00'	175.93'	100.00'	175.93'	15.43°	90.00°
07	1000.00'	176.22'	100.00'	176.22'	13.18°	90.00°
08	1000.00'	174.76'	100.00'	174.76'	11.25°	90.00°
09	1000.00'	171.41'	100.00'	171.41'	9.47°	90.00°
10	1000.00'	166.27'	100.00'	166.27'	8.13°	90.00°
11	1000.00'	159.58'	100.00'	159.58'	7.16°	90.00°
12	1000.00'	151.61'	100.00'	151.61'	6.41°	90.00°
13	1000.00'	141.94'	100.00'	141.94'	5.74°	90.00°
14	1000.00'	131.00'	100.00'	131.00'	5.14°	90.00°
15	1000.00'	119.27'	100.00'	119.27'	4.60°	90.00°
16	1000.00'	107.15'	100.00'	107.15'	4.11°	90.00°
17	1000.00'	95.00'	100.00'	95.00'	3.67°	90.00°
18	1000.00'	83.14'	100.00'	83.14'	3.28°	90.00°
19	1000.00'	71.81'	100.00'	71.81'	2.93°	90.00°
20	1000.00'	61.25'	100.00'	61.25'	2.61°	90.00°
21	1000.00'	51.60'	100.00'	51.60'	2.31°	90.00°
22	1000.00'	42.90'	100.00'	42.90'	2.03°	90.00°
23	1000.00'	35.20'	100.00'	35.20'	1.77°	90.00°
24	1000.00'	28.54'	100.00'	28.54'	1.53°	90.00°
25	1000.00'	22.96'	100.00'	22.96'	1.31°	90.00°
26	1000.00'	18.48'	100.00'	18.48'	1.11°	90.00°
27	1000.00'	15.00'	100.00'	15.00'	0.94°	90.00°
28	1000.00'	12.50'	100.00'	12.50'	0.80°	90.00°
29	1000.00'	10.90'	100.00'	10.90'	0.68°	90.00°
30	1000.00'	9.25'	100.00'	9.25'	0.58°	90.00°
31	1000.00'	7.50'	100.00'	7.50'	0.49°	90.00°
32	1000.00'	5.70'	100.00'	5.70'	0.41°	90.00°
33	1000.00'	3.80'	100.00'	3.80'	0.34°	90.00°
34	1000.00'	1.85'	100.00'	1.85'	0.28°	90.00°

DRAWING NUMBER 43 - 26

SECTION 24 TWP. 26 S., RANGE 36 E.

PLATBOOK 43 PAGE 26

SHEET 2 OF 2