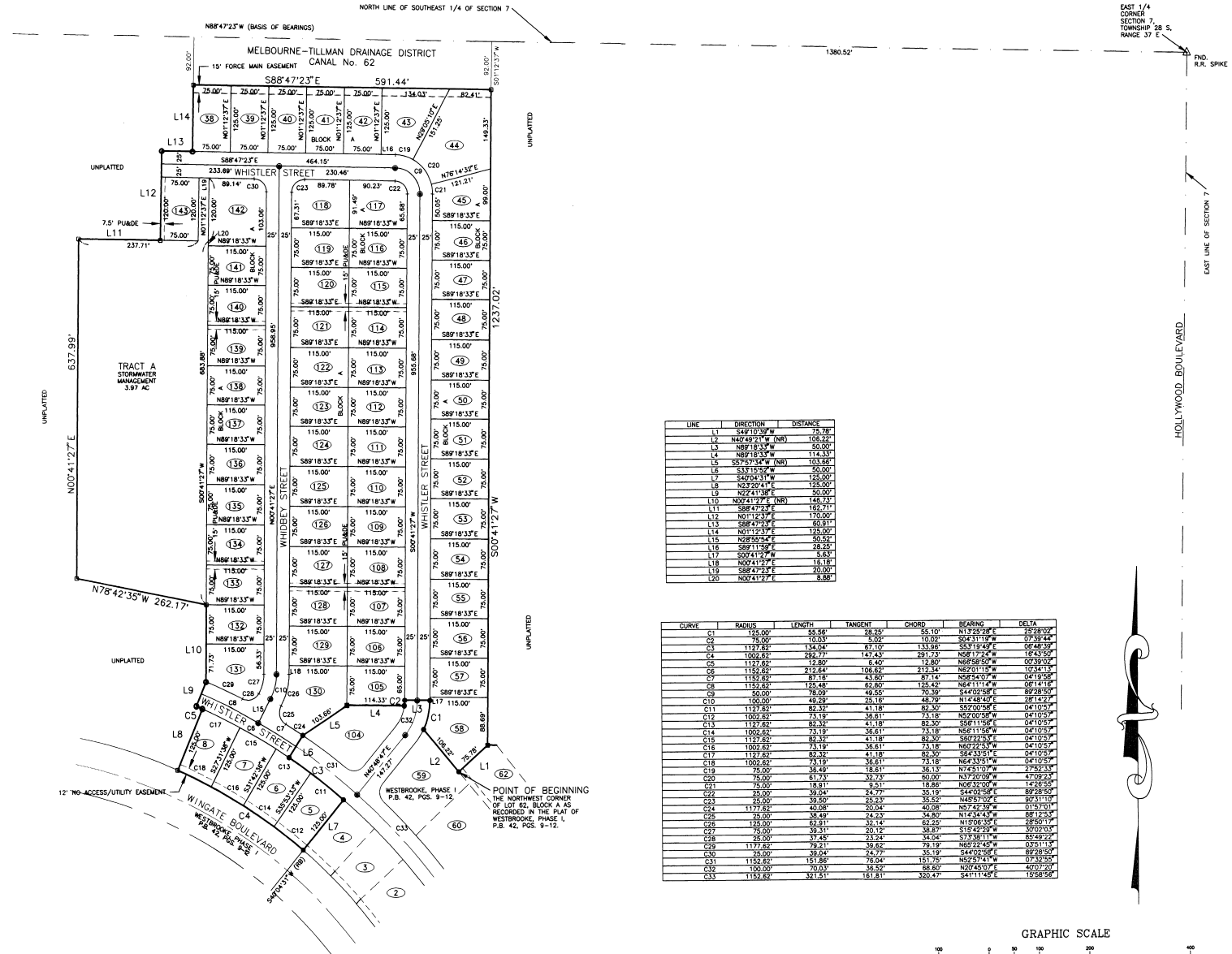
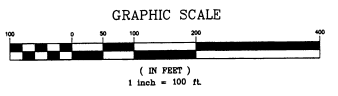


- WESTBROOKE PHASE II -
SECTION 7, TOWNSHIP 28 SOUTH, RANGE 37 EAST
WEST MELBOURNE, BREVARD COUNTY, FLORIDA



LINE	DIRECTION	DISTANCE
L1	S49°10'30"W	35.74'
L2	N40°49'21"W (NB)	108.22'
L3	N89°18'33"W	50.00'
L4	N89°18'33"W	114.30'
L5	S57°59'34"W (NB)	103.66'
L6	S33°15'50"W	50.00'
L7	S40°04'31"W	128.00'
L8	N22°20'41"E	125.00'
L9	N24°41'58"E	50.00'
L10	N00°41'23"E (NB)	148.73'
L11	S88°47'23"E	105.71'
L12	N0°11'23"E	170.00'
L13	S88°47'23"E	60.81'
L14	N0°11'23"E	135.00'
L15	N28°55'54"E	50.50'
L16	S89°11'00"E	28.20'
L17	S00°41'12"W	5.83'
L18	N00°41'12"W	15.18'
L19	S88°47'23"E	20.00'
L20	N00°41'12"W	8.88'

CURVE	RADIUS	LENGTH	TANGENT	CHORD	BEARING	DELTA
C1	125.00'	55.56'	38.25'	55.10'	N13°25'28"E	25°28'02"
C2	75.00'	100.33'	5.00'	100.00'	S84°31'19"W	0°49'44"
C3	1127.82'	15.04'	67.10'	133.96'	S51°19'49"E	08°48'39"
C4	1002.62'	292.77'	147.43'	281.73'	N58°17'24"W	18°43'39"
C5	1127.82'	15.04'	8.40'	12.80'	N66°56'07"W	02°30'04"
C6	1152.82'	213.64'	108.62'	212.34'	N52°01'19"W	10°34'13"
C7	1152.82'	81.18'	43.68'	87.14'	N58°54'07"E	04°19'58"
C8	1125.82'	125.48'	82.80'	125.42'	N64°11'14"W	08°14'18"
C9	50.00'	78.00'	49.50'	70.39'	S44°02'58"E	89°28'39"
C10	120.00'	45.20'	25.10'	48.79'	N1°48'40"E	28°14'21"
C11	1127.82'	82.32'	41.18'	82.30'	S52°00'58"E	04°10'57"
C12	1100.62'	71.19'	36.81'	73.18'	N52°00'58"E	04°10'57"
C13	1127.82'	65.32'	41.18'	62.30'	S58°11'58"E	04°10'57"
C14	1002.62'	73.19'	36.81'	73.18'	N58°11'58"E	04°10'57"
C15	1127.82'	82.32'	41.18'	82.30'	S60°22'34"E	04°10'57"
C16	1002.62'	73.19'	36.81'	73.18'	N59°22'34"W	04°10'57"
C17	1127.82'	65.32'	41.18'	62.30'	S64°33'51"E	04°10'57"
C18	1002.62'	73.19'	36.81'	73.18'	N64°33'51"E	04°10'57"
C19	75.00'	38.40'	18.61'	36.13'	N74°51'07"W	2°25'34"
C20	75.00'	61.73'	32.12'	60.00'	N37°20'07"W	4°19'23"
C21	75.00'	18.81'	9.51'	18.86'	N08°33'00"W	14°26'55"
C22	25.00'	70.00'	24.79'	35.19'	S44°02'58"E	89°28'39"
C23	25.00'	39.50'	22.23'	35.62'	N48°57'02"E	80°31'10"
C24	1177.82'	40.08'	20.04'	40.08'	N57°42'59"E	03°15'31"
C25	75.00'	38.40'	18.61'	36.13'	N74°51'07"W	2°25'34"
C26	125.00'	62.81'	32.14'	62.25'	N19°20'35"E	28°50'17"
C27	75.00'	61.73'	32.12'	60.00'	N37°20'07"W	4°19'23"
C28	25.00'	39.50'	22.23'	35.19'	S44°02'58"E	89°28'39"
C29	1177.82'	39.21'	19.60'	39.19'	N57°22'45"W	03°11'14"
C30	75.00'	39.04'	24.77'	35.19'	S44°02'58"E	89°28'39"
C31	1152.82'	151.86'	76.04'	151.75'	N52°49'41"W	02°25'34"
C32	120.00'	70.00'	35.52'	68.60'	N29°45'07"E	42°02'22"
C33	1152.82'	321.51'	161.81'	320.47'	S41°11'45"E	19°28'50"



THIS PLAT PREPARED BY
B.S.E. CONSULTANTS, INC.
CONSULTING, ENGINEERING, LAND SURVEYING
312 S. Harbor City Blvd., Suite 4, Melbourne, Florida 32901-725-3614

DATE: OCTOBER 17, 1996