

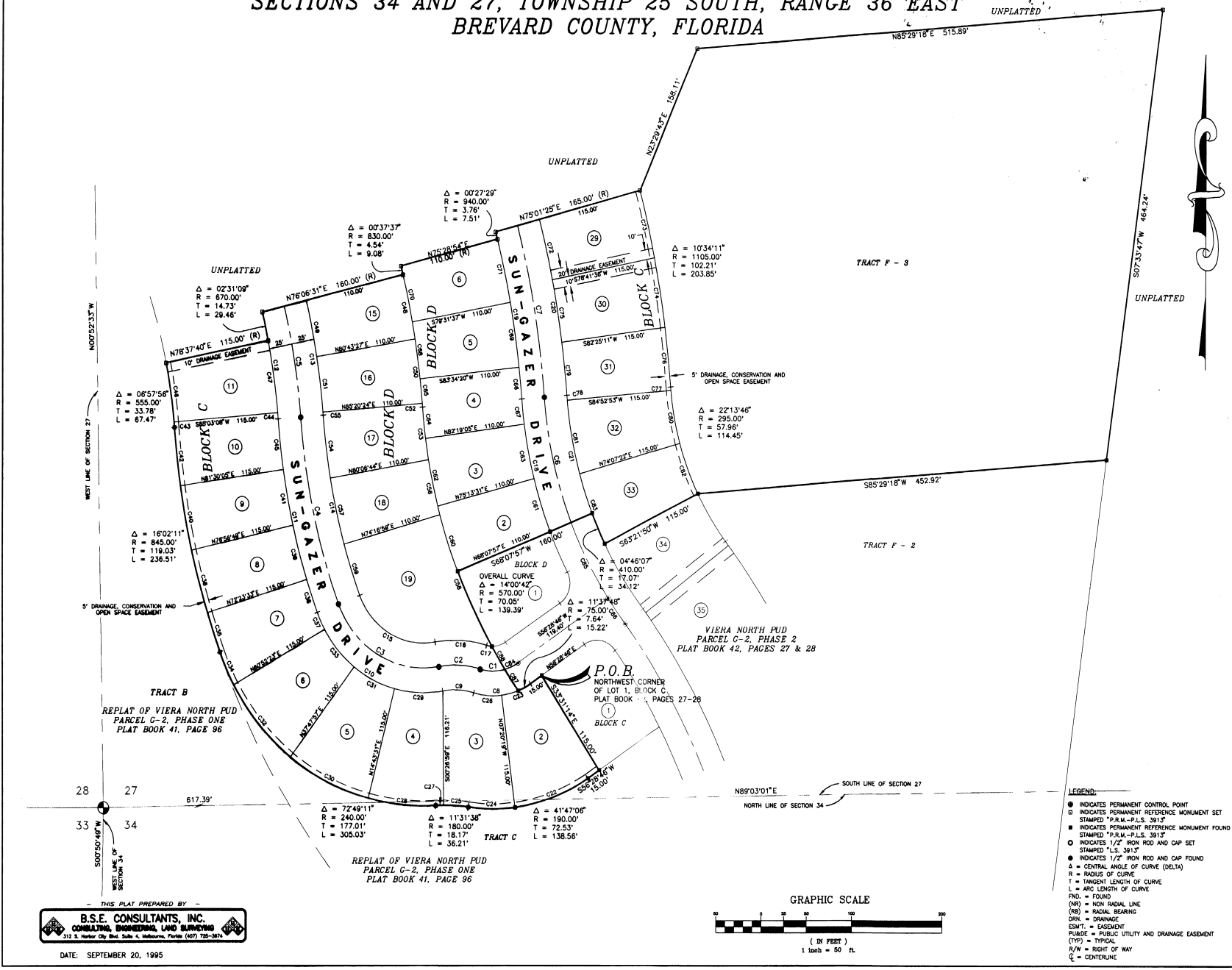
# PLAT OF VIERA NORTH PUD PARCEL G-2, PHASE THREE SECTIONS 34 AND 27, TOWNSHIP 25 SOUTH, RANGE 36 EAST BREVARD COUNTY, FLORIDA

DRAWING NUMBER  
**42-99**

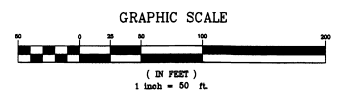
DRAWING NUMBER

DRAWING NUMBER

DRAWING NUMBER



- LEGEND:**
- INDICATES PERMANENT CONTROL POINT
  - INDICATES PERMANENT REFERENCE MONUMENT SET STAMPED "P.R.M.-P.L.S. 3913"
  - INDICATES PERMANENT REFERENCE MONUMENT FOUND STAMPED "P.R.M.-P.L.S. 3913"
  - INDICATES 1/2" IRON ROD AND CAP SET STAMPED "L.S. 3913"
  - INDICATES 1/2" IRON ROD AND CAP FOUND
  - Δ = CENTRAL ANGLE OF CURVE (DELTA)
  - R = RADIUS OF CURVE
  - T = TANGENT LENGTH OF CURVE
  - L = ARC LENGTH OF CURVE
  - FD. = FOUND
  - (DR) = NON RADIAL LINE
  - (RB) = RADIAL BEARING
  - DRN. = DRAINAGE
  - ESMT. = EASEMENT
  - PUB. = PUBLIC UTILITY AND DRAINAGE EASEMENT
  - (TYP) = TYPICAL
  - R/W = RIGHT OF WAY
  - C = CENTERLINE



THIS PLAT PREPARED BY

**B.S.E. CONSULTANTS, INC.**  
 CONSULTING, ENGINEERING AND SURVEYING  
 312 S. Harbor City Blvd., Suite 4, Melbourne, Florida (407) 725-3874

DATE: SEPTEMBER 20, 1995