

FOREST LAKE VILLAGE, UNIT THREE

A SUBDIVISION OF A PORTION OF SUNTREE P.U.D. TRACTS 24 AND 24A BEING
A PORTION OF SECTION 11, TOWNSHIP 26 SOUTH, RANGE 36 EAST, BREVARD COUNTY, FLORIDA

PLAT BOOK 42 PAGE 89
SHEET 2 OF 2
SECTION 11, TWP. 26 S., RANGE 36 E.

DRAWING NUMBER
42-89

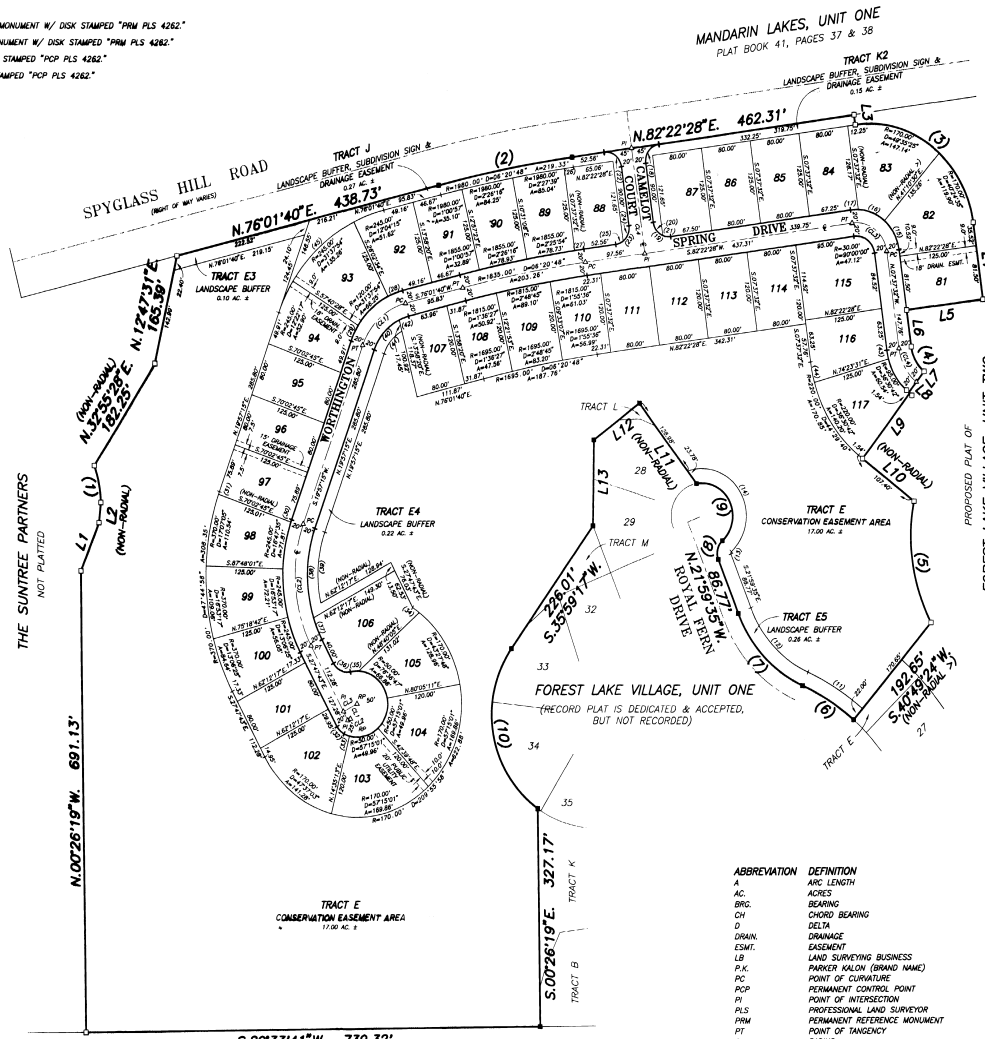
DRAWING NUMBER

DRAWING NUMBER

DRAWING NUMBER

LEGEND:

- = FOUND 4"x4" CONCRETE MONUMENT W/ DISK STAMPED "PRM PLS 4262"
- = SET 4"x4" CONCRETE MONUMENT W/ DISK STAMPED "PRM PLS 4262"
- ▲ = FOUND P.K. NAIL & DISK STAMPED "PCP PLS 4262"
- △ = SET P.K. NAIL & DISK STAMPED "PCP PLS 4262"



CENTERLINE CURVE TABLE

NO.	RADIUS	DELTA	ARC	CHORD	CHORD BEARING
(CL1)	100.00'	56°04'38"	87.87'	94.01'	S 47°39'58"W
(CL2)	225.00'	4°24'58"	187.51'	182.15'	S 83°50'14"E
(CL3)	50.00'	90°00'00"	78.54'	70.71'	S 52°17'32"E
(CL4)	75.00'	44°29'40"	58.24'	56.79'	S 29°52'32"E

CENTERLINE LINE TABLE

Line	Bearing	Distance
CL1	S 27°47'43"E	15.00'
CL2	N 82°12'17"E	5.00'
CL3	N 82°12'17"E	25.00'
CL4	N 07°33'52"W	160.00'

LINE TABLE

Line	Bearing	Distance
L1	N 82°18'44"E	78.80'
L2	N 05°38'00"E	30.68'
L3	S 07°37'32"E	15.00'
L4	S 07°37'32"E	117.00'
L5	S 82°27'29"W	126.00'
L6	S 07°37'32"E	55.25'
L7	S 17°52'49"W	40.00'
L8	S 07°37'32"E	1.54'
L9	S 17°52'49"W	126.00'
L10	S 37°07'11"E	165.86'
L11	N 17°09'54"W	152.78'
L12	S 57°34'54"W	62.53'
L13	S 07°47'34"W	130.89'

CURVE TABLE

NO.	RADIUS	DELTA	ARC	CHORD	CHORD BEARING
(1)	170.00'	19°18'30"	57.29'	57.02'	S 10°35'12"E
(2)	1995.00'	06°20'48"	220.98'	220.88'	N 79°12'00"E
(3)	170.00'	90°00'00"	267.04'	240.42'	S 67°32'32"E
(4)	55.00'	44°29'40"	42.71'	41.85'	N 29°32'32"W
(5)	297.00'	40°18'07"	187.81'	183.98'	S 08°38'50"W
(6)	332.80'	16°58'13"	88.54'	88.18'	N 57°39'33"W
(7)	200.00'	44°09'35"	154.15'	150.35'	N 44°04'11"W
(8)	25.00'	70°31'44"	30.77'	28.87'	N 13°16'17"E
(9)	304.00'	14°59'52"	129.93'	98.28'	N 59°47'19"E
(10)	170.00'	91°43'38"	272.16'	244.01'	N 09°56'31"W
(11)	304.00'	16°58'13"	165.86'	104.68'	S 27°39'32"E
(12)	178.00'	44°09'36"	137.19'	133.82'	N 44°04'12"W
(13)	44.00'	70°31'44"	3.88'	3.48'	N 13°16'17"E
(14)	72.00'	15°17'47"	197.65'	141.18'	S 30°28'44"E
(15)	70.00'	41°11'58"	90.33'	48.28'	S 28°13'17"E
(16)	70.00'	38°18'27"	86.80'	45.83'	S 8°28'44"E
(17)	70.00'	10°29'35"	12.82'	12.80'	N 87°37'16"E
(18)	25.00'	90°00'00"	26.18'	39.27'	S 08°38'50"W
(19)	25.00'	90°00'00"	39.27'	35.36'	N 52°37'32"W
(20)	25.00'	60°00'00"	26.18'	29.00'	N 37°13'57"W
(21)	25.00'	30°00'00"	13.09'	12.94'	N 82°37'32"W
(22)	25.00'	80°00'00"	39.27'	35.36'	S 37°22'36"W
(23)	25.00'	80°00'00"	39.27'	35.36'	S 37°22'36"W
(24)	25.00'	80°00'00"	39.27'	35.36'	S 37°22'36"W
(25)	25.00'	30°00'00"	13.09'	12.94'	S 87°22'36"W
(26)	1885.00'	00°25'46"	14.84'	14.84'	N 82°08'38"E
(27)	1885.00'	00°27'41"	14.94'	14.94'	N 82°08'38"E
(28)	120.00'	12°04'15"	25.28'	25.23'	N 69°59'33"E
(29)	120.00'	12°22'11"	25.81'	25.86'	N 69°59'33"E
(30)	245.00'	00°57'41"	4.11'	4.11'	N 19°28'03"E
(31)	370.00'	00°38'11"	4.11'	4.11'	N 19°28'03"E
(32)	25.00'	36°22'12"	16.09'	15.81'	N 46°13'49"W
(33)	50.00'	10°44'52"	9.38'	9.37'	N 70°02'11"W
(34)	170.00'	04°21'05"	12.91'	12.91'	S 50°33'09"E
(35)	50.00'	15°48'07"	13.79'	13.79'	N 68°54'19"E
(36)	25.00'	74°32'02"	32.52'	30.28'	N 65°03'44"W
(37)	205.00'	09°53'08"	35.35'	35.35'	N 22°53'00"E
(38)	205.00'	37°53'51"	135.59'	133.14'	N 07°00'20"E
(39)	188.00'	32°46'11"	107.54'	108.08'	N 07°54'00"E
(40)	80.00'	44°30'16"	62.14'	60.59'	N 42°12'37"E
(41)	83.00'	41°19'11"	65.43'	64.46'	N 40°36'05"W
(42)	80.00'	11°34'09"	16.15'	16.15'	N 70°14'38"E
(43)	95.00'	07°58'27"	13.24'	13.22'	N 11°37'00"W
(44)	225.00'	07°58'27"	30.43'	30.43'	N 11°37'00"W
(45)	245.00'	56°04'25"	239.77'	230.32'	S 47°59'28"W

ABBREVIATION DEFINITION

A	ARC LENGTH
AC	ACRES
BRC	BEARING
CH	CHORD BEARING
D	DELTA
DRAIN	DRAINAGE
ESMT	EASEMENT
LB	LAND SURVIVING BUSINESS
P.K.	PARKER KALON (BRAND NAME)
PC	POINT OF CURVATURE
D	PERMANENT CONTROL POINT
PI	POINT OF INTERSECTION
PLS	PROFESSIONAL LAND SURVEYOR
POM	PERMANENT REFERENCE MONUMENT
PT	POINT OF TANGENCY
R	RADIUS
RP	RADIUS POINT
S.F.	SQUARE FEET
C	CENTERLINE

PREPARED BY:
ALLEN Engineering Inc.
ENGINEERS - SURVEYORS
106 FOREST LAKE (P.O. BOX 23155)
DOVER, FLORIDA 32820-1551
TELEPHONE: (407)783-7443 FAX: (407)783-5262

NOTICE: THERE MAY BE ADDITIONAL RESTRICTIONS THAT ARE NOT RECORDED ON THIS PLAT THAT MAY BE FOUND IN THE PUBLIC RECORDS OF THIS COUNTY.

8/30/2024 4:08 PM