

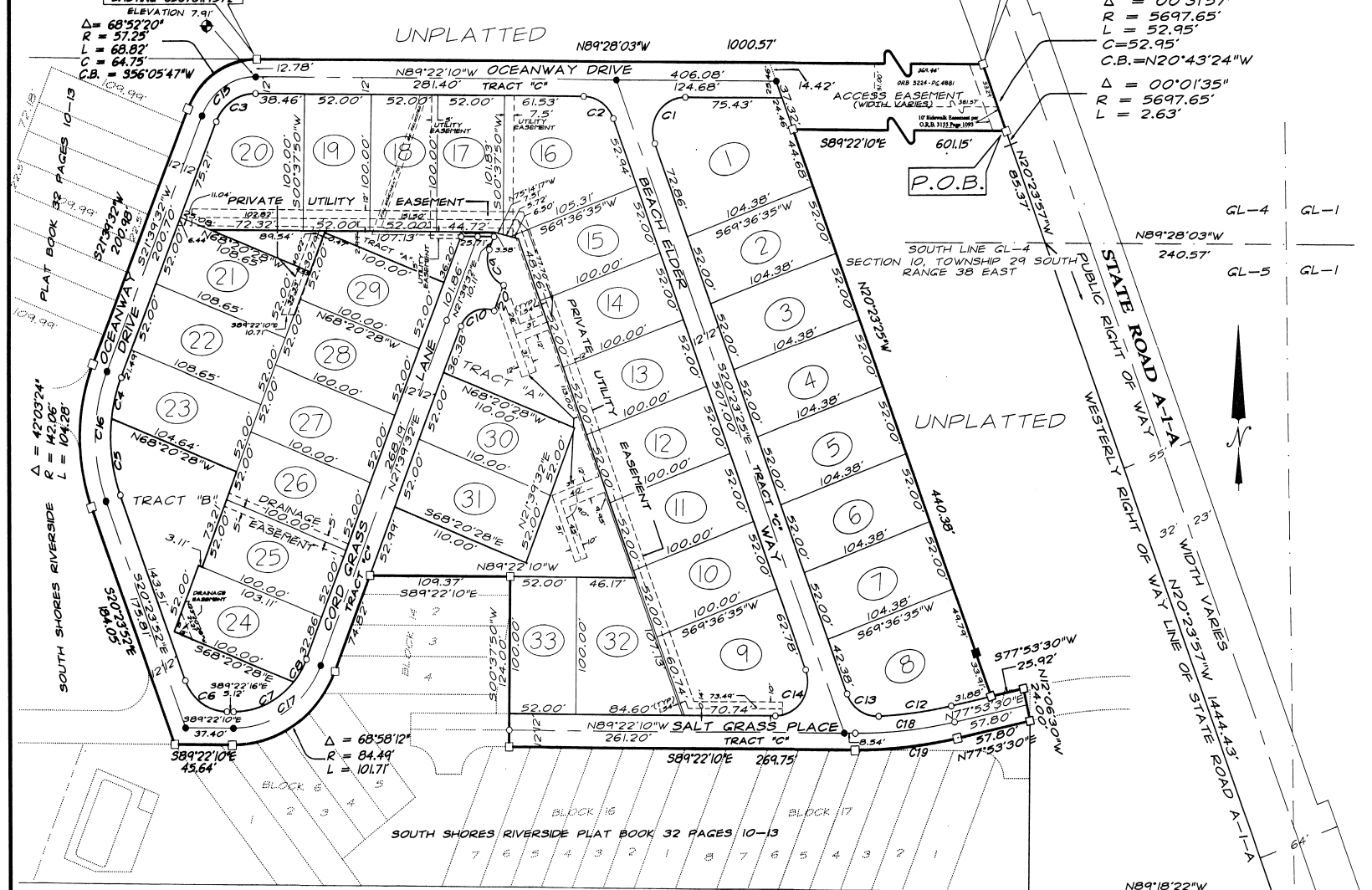
# SOUTH SHORES PHASE I

A REPLAT OF A PORTION OF SOUTH SHORES RIVERSIDE  
AS RECORDED IN PLAT BOOK 32, PAGES 10-13, BREVARD COUNTY, FLORIDA  
AND LYING IN SECTION 10, TOWNSHIP 29 SOUTH, RANGE 38 EAST.

PLAT BOOK 42 AND PAGE 42  
SHEET 2 OF 2  
SECTION 10, TWP. 29 S., RANGE 38 E.

NORTHING 1322894.7155  
EASTING 656731.4572  
ELEVATION 7.91'

NORTHING 1322885.4164  
EASTING 657731.9840



$\Delta = 00^{\circ}31'57''$   
 $R = 5697.65'$   
 $L = 52.95'$   
 $C = 52.95'$   
 $C.B. = N20^{\circ}43'24''W$

$\Delta = 00^{\circ}01'35''$   
 $R = 5697.65'$   
 $L = 2.63'$

GL-4 GL-1  
SECTION 10, TOWNSHIP 29 SOUTH  
RANGE 38 EAST  
GL-5 GL-1

$\Delta = 68^{\circ}52'20''$   
 $R = 57.25'$   
 $C = 60.82'$   
 $C.B. = S56^{\circ}05'47''W$

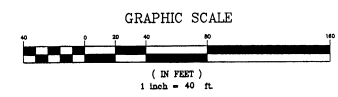
$\Delta = 42^{\circ}03'24''$   
 $R = 142.06'$   
 $L = 104.28'$

$\Delta = 68^{\circ}58'12''$   
 $R = 84.49'$   
 $L = 101.71'$

SOUTH SHORES RIVERSIDE PLAT BOOK 32 PAGES 10-13

**CURVE TABLE**

LOT	CURVE	RADIUS	LENGTH	TANGENT	CHORD	BEARING	DELTA
1	C1	25.00'	48.44'	36.34'	41.21'	S35°07'13"W	110°11'51"
2	C2	338.00'	57.11'	28.62'	57.04'	S82°43'56"W	09°40'52"
3	C3	25.00'	31.43'	18.18'	24.40'	S58°24'31"E	72°02'13"
4	C4	25.00'	48.44'	36.34'	41.21'	N35°07'13"E	110°11'51"
5	C5	25.00'	31.43'	17.18'	28.31'	N42°27'47"W	68°58'45"
6	C6	32.44'	39.25'	22.28'	36.74'	S56°08'41"W	68°58'18"
7	C7	118.06'	30.86'	15.52'	30.77'	S14°10'15"W	14°58'35"
8	C8	60.49'	19.49'	9.83'	19.40'	N30°53'20"E	18°27'36"
9	none	118.06'	45.81'	28.43'	52.32'	S06°12'25"E	27°04'53"
10	C9	35.00'	42.13'	24.04'	39.64'	S54°53'04"E	68°58'24"
11	none	60.49'	53.33'	28.54'	51.62'	N65°22'35"E	50°30'55"
12	C10	20.00'	31.41'	19.69'	28.28'	S23°19'57"E	89°58'58"
13	none	20.00'	31.39'	19.47'	28.27'	S66°40'48"W	89°55'24"
14	C11	84.49'	18.65'	9.36'	18.61'	N27°58'58"E	12°38'40"
15	CENTERLINE	130.06'	95.47'	50.00'	93.34'	S00°37'48"W	42°03'28"
16	CENTERLINE	72.49'	87.26'	49.79'	82.09'	N56°08'44"E	68°58'12"
17	CENTERLINE	44.44'	52.52'	39.53'	52.32'	S36°08'41"W	68°58'18"
18	CENTERLINE	350.00'	77.82'	39.07'	77.66'	N84°15'40"E	68°58'18"
19	R/W	382.00'	80.49'	40.41'	80.32'	N84°15'40"E	12°44'20"



**PLAT PREPARED BY**  
THIS INSTRUMENT WAS PREPARED  
BY RICHARD A. PLUM, P.L.M. NO. 4863  
ON DECEMBER 12, 2012

**R.A. PLUM** LAND SURVEYORS  
AND CONSULTANTS  
1800 AIRWAY A-1A SUITE 34  
SATILLITE BLKCK. FL. 33087  
(887)-880 FAX (407)-644

**C**  
LAND SURVEYING / LAND PLATTING

NOTICE: THERE MAY BE ADDITIONAL  
RESTRICTIONS THAT ARE NOT RECORDED  
ON THIS PLAT THAT MAY BE FOUND IN  
THE PUBLIC RECORDS OF THIS COUNTY.

P.O.C.

S89°16'07"E GL-1 GL-5

SOUTH LINE OF SECTION 10, TOWNSHIP 29 SOUTH, RANGE 38 EAST 248.29'