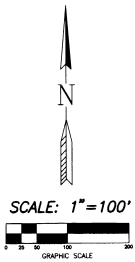


MANDARIN LAKES, UNIT TWO

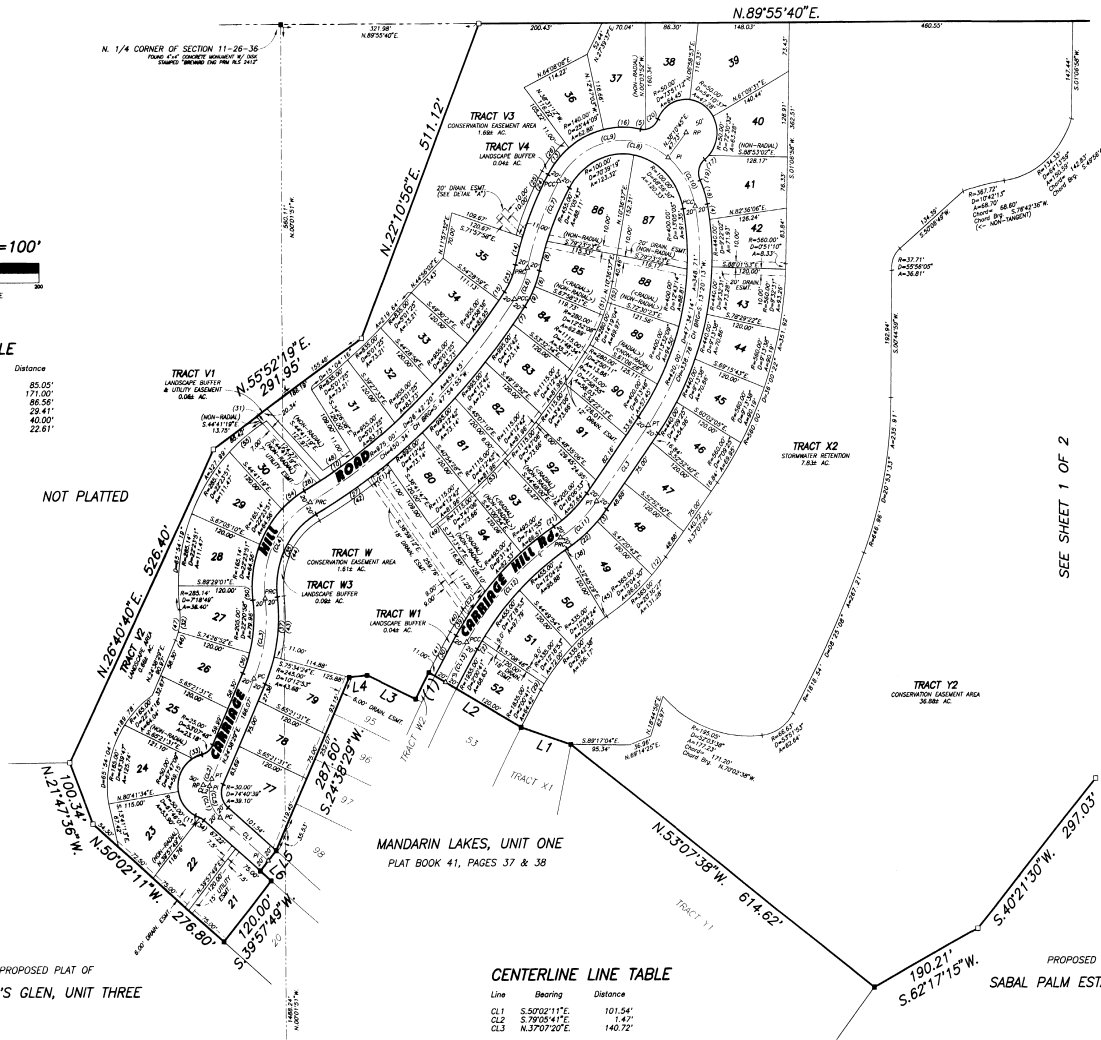
PLAT BOOK 42, PAGE 39
SHEET 2 OF 2
SECTIONS 11 & 12, TWP. 26 S.,
RANGE 36 E.

TRACT "R"
HOLIDAY SPRINGS AT SUNTREE
PLAT BOOK 28, PAGES 67-73



LINE TABLE

Line	Bearing	Distance
L1	N. 72°01'51"W	85.05'
L2	N. 60°59'32"W	171.00'
L3	S. 62°21'37"E	86.50'
L4	S. 84°02'47"W	29.41'
L5	S. 39°52'46"W	40.00'
L6	S. 52°02'11"E	22.61'



CURVE TABLE

NO.	RADIUS	DELTA	ARC	TANGENT	CHORD	CHORD BEARING
1	2006.00'	011°17'53"	45.43'	22.72'	45.43'	N. 28°21'31"E
2	455.00'	017°00'00"	14.27'	7.30'	14.27'	N. 31°58'11"E
3	245.00'	020°15'57"	23.66'	11.84'	23.66'	S. 32°53'18"W
4	440.00'	027°02'59"	23.42'	11.71'	23.42'	S. 09°55'24"W
5	25.00'	18°11'19"	6.37'	4.23'	6.37'	N. 87°27'11"E
6	160.00'	08°59'52"	25.13'	12.59'	25.13'	S. 17°31'43"W
7	895.00'	01°53'14"	32.80'	16.45'	32.80'	S. 52°30'30"W
8	455.00'	02°49'49"	46.30'	23.17'	46.30'	N. 10°58'41"E
9	160.00'	12°23'07"	35.00'	17.50'	35.00'	S. 87°17'47"W
10	955.00'	02°51'52"	64.41'	32.22'	64.41'	S. 57°29'49"W
11	25.00'	02°54'16"	1.29'	0.63'	1.29'	S. 60°33'25"E
12	365.00'	03°31'57"	35.24'	17.64'	35.24'	S. 38°53'18"W
13	140.00'	11°51'51"	52.65'	26.61'	52.65'	N. 40°43'03"E
14	495.00'	03°09'16"	43.23'	21.63'	43.23'	N. 10°31'54"E
15	955.00'	02°57'15"	15.91'	7.95'	15.91'	N. 52°02'23"W
16	140.00'	14°55'14"	60.91'	30.94'	60.91'	N. 89°40'44"E
17	30.00'	09°33'44"	6.34'	4.18'	6.34'	S. 48°29'00"W
18	140.00'	15°20'08"	37.47'	18.85'	37.47'	S. 16°06'03"E
19	25.00'	29°02'49"	34.46'	20.61'	34.46'	N. 13°43'23"E
20	25.00'	58°49'21"	26.10'	14.30'	26.10'	S. 52°02'25"W
21	205.00'	04°29'54"	16.10'	8.05'	16.09'	S. 55°28'50"W
22	245.00'	10°04'30"	64.46'	32.42'	64.28'	S. 01°11'30"W
23	120.00'	21°31'59"	45.10'	22.82'	44.83'	S. 23°47'46"W
24	495.00'	11°55'10"	102.99'	51.69'	102.80'	N. 02°58'40"E
25	506.00'	17°56'16"	105.26'	52.83'	105.09'	N. 25°59'40"E
26	151.00'	01°51'51"	56.73'	28.70'	56.40'	N. 04°04'00"E
27	995.00'	07°57'52"	138.31'	69.27'	138.20'	S. 57°17'09"W
28	955.00'	01°50'20"	30.65'	15.33'	30.65'	S. 02°00'55"W
29	335.00'	01°50'00"	10.73'	5.36'	10.73'	N. 31°58'11"E
30	1995.00'	01°27'11"	70.03'	35.02'	70.03'	N. 30°00'48"E
31	285.14'	01°27'11"	7.23'	3.62'	7.23'	N. 56°50'04"E
32	85.00'	22°22'58"	33.16'	16.79'	32.95'	S. 04°22'39"W
33	50.00'	18°17'34"	16.84'	8.50'	16.76'	N. 68°07'00"E
34	25.00'	18°08'06"	7.91'	3.99'	7.88'	S. 59°06'14"E
35	125.14'	160°03'00"	146.60'	84.51'	146.60'	N. 07°14'00"E
36	205.00'	09°05'21"	30.52'	16.29'	30.49'	S. 07°00'48"W
37	245.00'	01°13'26"	90.79'	45.80'	90.24'	S. 03°46'00"E
38	455.00'	00°29'17"	3.87'	1.94'	3.87'	S. 57°29'09"E
39	495.00'	02°35'11"	81.89'	41.08'	81.82'	N. 02°46'37"E
40	506.00'	09°45'11"	86.13'	43.17'	86.03'	N. 30°53'44"E
41	2008.00'	02°04'14"	30.44'	15.21'	30.44'	N. 07°00'48"E
42	1006.00'	07°57'52"	139.84'	70.03'	139.71'	S. 57°17'09"W
43	256.00'	21°12'26"	94.81'	47.86'	94.25'	S. 02°46'53"E
44	114.14'	68°03'55"	126.60'	77.09'	126.60'	N. 07°00'48"E
45	335.00'	02°29'17"	1.20'	1.43'	1.20'	S. 57°29'09"E
46	85.00'	09°05'21"	13.48'	6.79'	13.44'	N. 07°00'48"E
47	85.00'	21°26'19"	46.64'	23.89'	46.00'	S. 08°50'19"W
48	944.00'	03°31'51"	151.00'	75.50'	151.00'	S. 07°10'28"W
49	1115.00'	00°32'01"	10.38'	5.19'	10.38'	N. 53°07'17"E
50	165.14'	165°14'00"	165.14'	102.65'	165.14'	N. 03°00'20"W
51	280.00'	11°10'08"	54.50'	27.38'	54.50'	S. 01°14'17"W
52	380.00'	08°51'31"	33.64'	16.84'	33.64'	S. 40°03'00"E
53	1115.00'	03°47'08"	73.66'	36.84'	73.65'	S. 47°02'33"W
54	165.14'	153°77'24"	45.59'	22.79'	45.59'	S. 47°02'33"W
55	285.14'	151°4'59"	75.89'	37.94'	75.89'	S. 47°02'33"W

SEE SHEET 1 OF 2

EASEMENT CURVE TABLE

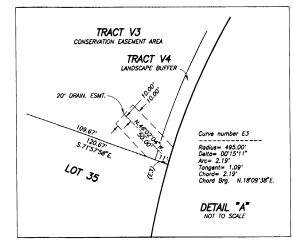
(NO.)	RADIUS	DELTA	ARC	TANGENT	CHORD	CHORD BEARING
(E1)	995.00'	01°48'33"	30.87'	15.44'	30.87'	S. 54°11'33"W
(E2)	495.00'	04°38'00"	42.64'	21.33'	42.65'	N. 38°02'01"E

CENTERLINE LINE TABLE

Line	Bearing	Distance
CL1	S. 50°02'11"E	101.54'
CL2	S. 79°03'41"E	1.47'
CL3	N. 37°07'20"E	140.72'

CENTERLINE CURVE TABLE

NO.	RADIUS	DELTA	ARC	TANGENT	CHORD	CHORD BEARING
(CL1)	30.00'	60°56'30"	53.18'	29.40'	50.71'	N. 19°33'55"W
(CL2)	30.00'	134°40'00"	11.99'	6.02'	11.96'	N. 17°46'24"E
(CL3)	225.00'	31°28'18"	123.46'	63.33'	121.86'	S. 08°05'19"W
(CL4)	145.14'	60°03'55"	172.43'	98.02'	162.46'	N. 27°14'07"E
(CL5)	50.00'	24°40'58"	65.17'	36.14'	65.18'	N. 12°41'51"E
(CL6)	140.00'	21°31'59"	52.62'	26.82'	52.31'	S. 23°47'46"W
(CL7)	475.00'	18°55'11"	140.52'	70.67'	140.52'	N. 07°00'48"E
(CL8)	120.00'	138°35'48"	292.37'	156.12'	225.24'	S. 80°14'48"E
(CL9)	120.00'	98°13'59"	205.29'	128.99'	181.44'	N. 39°04'30"E
(CL10)	120.00'	41°22'22"	86.65'	45.31'	84.78'	S. 31°08'04"E
(CL11)	225.00'	20°38'27"	80.94'	40.90'	80.44'	S. 47°25'33"W
(CL12)	475.00'	28°42'58"	221.44'	112.77'	218.44'	N. 44°22'28"E
(CL13)	1975.00'	02°00'41"	69.33'	34.67'	69.33'	N. 30°00'48"E



PREPARED BY:
ALLEN Engineering, Inc.
ENGINEERS - SURVEYORS
100 ROOR LANE (P.O. BOX 321521)
COLUM BIURK, FLORIDA 32212-1521
TELEPHONE: (407)283-7343 FAX: (407)283-3482

NOTICE: THERE MAY BE ADDITIONAL RESTRICTIONS THAT ARE NOT RECORDED ON THIS PLAT THAT MAY BE FOUND IN THE PUBLIC RECORDS OF THIS COUNTY.

MAN/KEP4.DWG