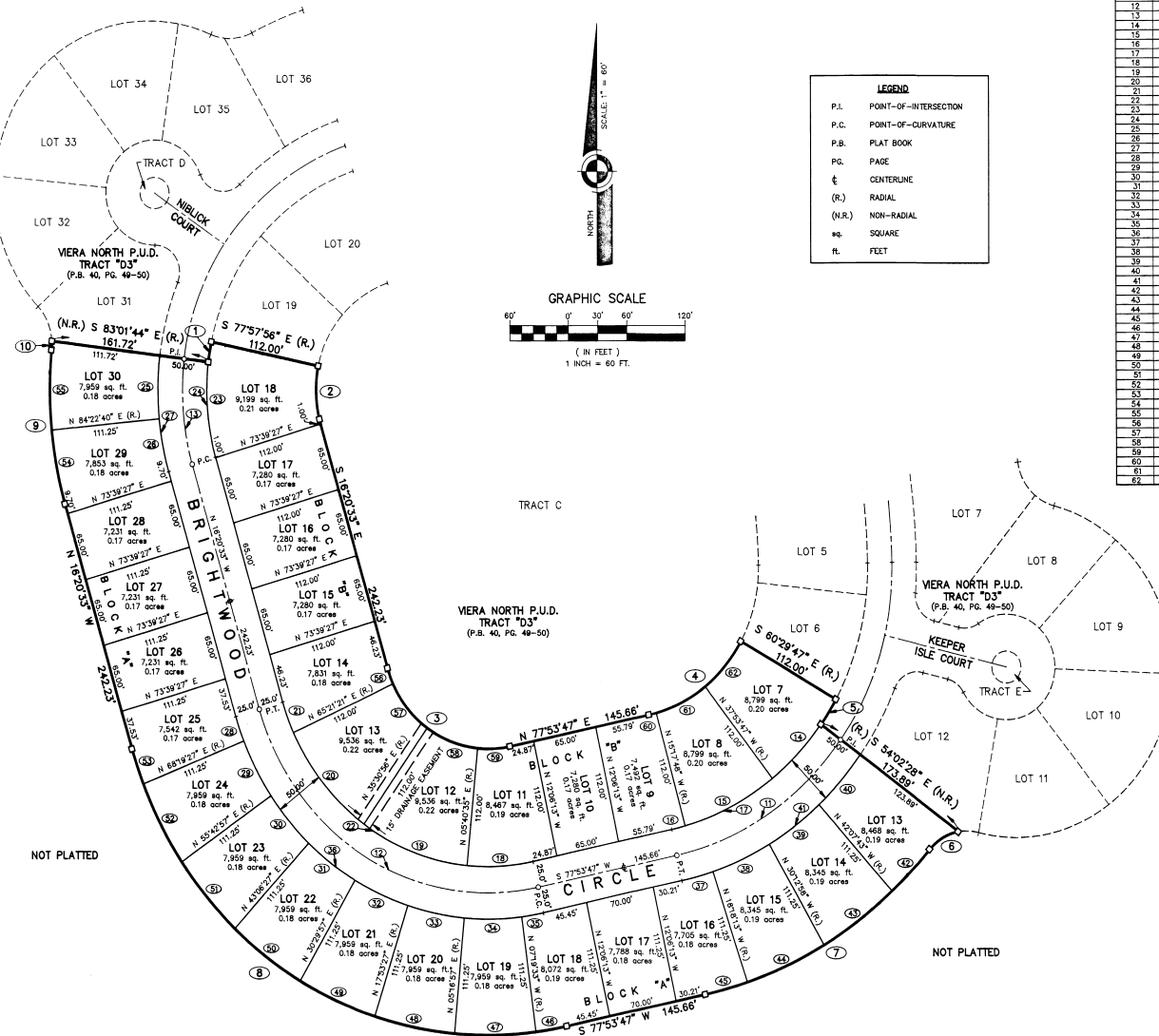


VIERA NORTH P.U.D. TRACT "D3" PHASES 3 AND 4

A SUBDIVISION LYING IN SECTIONS 33, TOWNSHIP 25 SOUTH, RANGE 36 EAST
BREVARD COUNTY, FLORIDA



LEGEND

- P.I. POINT-OF-INTERSECTION
- P.C. POINT-OF-CURVATURE
- P.B. PLAT BOOK
- PG. PAGE
- CL CENTERLINE
- (R) RADIAL
- (N.R.) NON-RADIAL
- sq. SQUARE
- ft. FEET

CURVE DATA

CURVE	RADIUS	DELTA	LENGTH	TANGENT	CHORD	BEARING
1	216.81	05°34'48"	19.43	9.72	19.42	N 09°30'10" E
2	107.81	28°23'37"	53.40	27.56	52.80	S 02°59'14" E
3	107.48	85°45'40"	100.88	89.81	146.28	S 58°32'32" E
4	143.17	48°23'35"	120.92	64.33	117.26	N 53°26'20" W
5	255.17	06°27'20"	28.75	14.39	28.73	S 32°43'52" W
6	50.00	30°33'42"	34.52	17.84	33.84	S 59°47'41" W
7	416.42	37°40'52"	273.66	142.69	268.90	S 59°03'21" W
8	380.73	85°45'40"	569.88	353.56	516.15	N 59°15'23" W
9	381.06	22°20'58"	148.64	75.99	147.30	N 05°10'04" W
10	50.00	07°23'36"	8.44	3.29	6.43	N 02°19'07" E
11	285.17	41°56'15"	205.07	107.37	200.92	S 50°55'40" W
12	244.46	85°45'40"	365.84	227.03	332.72	N 59°15'23" W
13	244.81	23°18'48"	99.52	50.51	98.93	N 04°41'09" W
14	255.17	22°38'00"	100.63	50.99	100.00	S 40°44'13" E
15	255.17	22°35'59"	100.65	50.99	100.00	S 83°24'12" W
16	255.17	03°11'35"	4.22	1.71	4.22	S 78°17'59" W
17	255.17	41°56'15"	186.77	97.79	182.63	S 50°55'40" W
18	219.48	17°46'45"	68.11	34.33	67.84	S 88°47'11" W
19	219.48	28°50'27"	114.30	58.48	113.02	N 62°24'14" W
20	219.48	28°50'25"	114.31	58.48	113.02	N 03°30'11" W
21	219.48	08°18'06"	31.80	15.93	31.77	N 20°29'38" W
22	219.48	85°45'40"	358.50	203.80	328.70	N 59°15'23" W
23	219.81	28°23'37"	108.87	55.57	107.78	N 02°29'14" W
24	219.81	23°18'49"	89.44	45.35	88.83	N 04°41'08" W
25	269.81	12°35'05"	59.30	29.71	59.18	S 05°40'29" W
26	269.81	10°43'13"	50.48	25.32	50.41	S 10°58'56" E
27	269.81	23°18'49"	109.78	55.66	109.03	S 04°41'08" W
28	269.48	02°20'00"	53.08	12.61	28.08	S 19°03'11" E
29	269.48	12°36'30"	59.30	29.71	59.18	S 27°58'48" E
30	269.48	12°36'30"	59.30	29.71	59.18	S 40°51'58" E
31	269.48	12°36'30"	59.30	29.71	59.18	S 53°11'48" E
32	269.48	12°36'30"	59.30	29.71	59.18	S 65°48'18" E
33	269.48	12°36'30"	59.30	29.71	59.18	S 78°17'59" E
34	269.48	12°36'30"	59.30	29.71	59.18	N 88°58'42" E
35	269.48	08°46'42"	20.47	11.24	22.47	N 80°17'07" E
36	269.48	85°45'40"	403.29	257.23	366.73	S 59°15'23" W
37	305.17	06°12'00"	33.02	16.33	33.01	N 74°42'41" E
38	305.17	11°54'45"	63.49	31.84	63.33	N 65°29'22" E
39	305.17	11°54'45"	63.49	31.84	63.33	N 53°49'40" E
40	305.17	11°54'45"	63.49	31.84	63.33	N 41°54'26" E
41	305.17	6°43'42"	286.82	161.34	386.78	N 50°15'56" W
42	416.42	07°39'22"	55.64	27.86	55.60	S 44°32'06" W
43	416.42	11°54'45"	86.58	43.45	86.42	S 53°49'40" W
44	416.42	11°54'45"	86.58	43.45	86.42	S 66°17'59" W
45	416.42	08°12'00"	45.08	22.55	45.04	S 74°47'47" W
46	380.73	04°46'40"	31.79	15.88	31.74	S 80°17'07" W
47	380.73	12°36'30"	53.78	27.08	53.61	S 89°58'42" W
48	380.73	12°36'30"	53.78	27.08	53.61	N 78°24'48" W
49	380.73	12°36'30"	53.78	27.08	53.61	N 65°48'18" W
50	380.73	12°36'30"	53.78	27.08	53.61	N 53°11'48" W
51	380.73	12°36'30"	53.78	27.08	53.61	N 40°51'58" W
52	380.73	12°36'30"	53.78	27.08	53.61	N 28°24'12" W
53	380.73	05°20'00"	34.44	17.73	35.43	N 19°00'33" W
54	381.06	10°43'13"	71.30	36.75	71.19	N 05°58'56" W
55	381.06	11°57'45"	77.34	38.81	77.21	N 00°11'53" W
56	107.48	08°18'06"	15.37	7.80	15.58	S 20°29'38" E
57	107.48	28°50'25"	55.88	28.64	55.30	S 39°35'31" E
58	107.48	28°50'22"	55.88	28.64	55.30	S 69°24'14" E
59	107.48	17°46'48"	33.35	16.81	33.22	N 86°47'11" E
60	143.17	03°11'35"	7.80	3.89	7.88	N 78°17'59" E
61	143.17	22°35'59"	56.47	28.61	56.11	N 63°24'12" E
62	143.17	22°36'00"	56.47	28.61	56.11	N 40°48'13" E