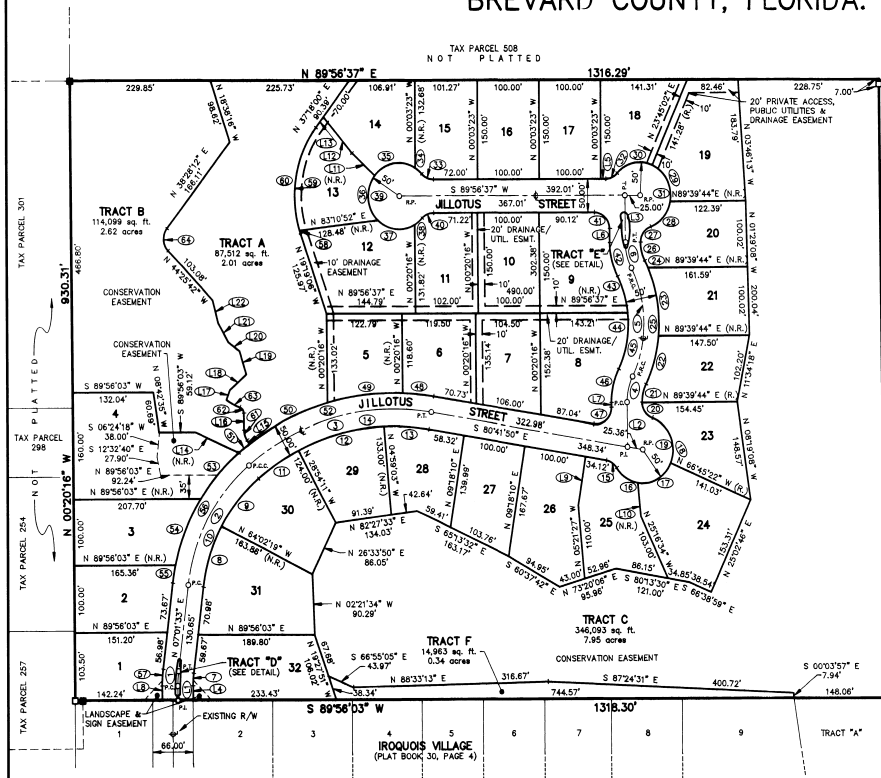


WOODS AT IROQUOIS

A SUBDIVISION LYING IN SECTION 12, TOWNSHIP 25 SOUTH, RANGE 36 EAST OF BREVARD COUNTY, FLORIDA.

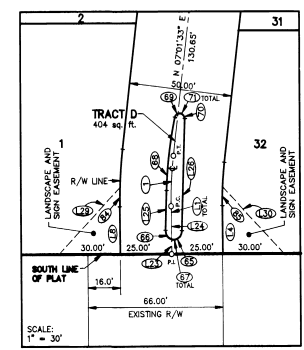
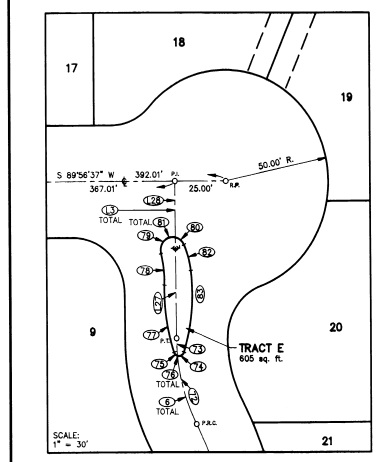
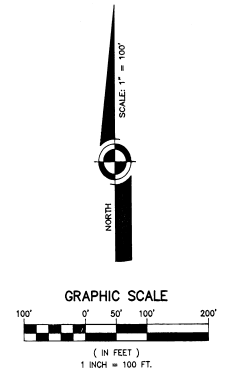


LINE	BEARING	DISTANCE
L1	N 00°19'04" W	21.50'
L2	N 00°20'16" W	66.46'
L3	N 00°20'16" W	70.83'
L4	N 00°19'04" W	21.61'
L5	S 89°56'37" W	8.20'
L6	S 00°20'16" E	21.08'
L7	S 00°20'16" E	7.25'
L8	S 00°19'04" E	21.39'
L9	N 00°18'10" E	73.00'
L10	N 05°21'27" W	50.79'
L11	N 47°32'13" W	50.00'
L12	N 40°18'59" W	71.88'
L13	N 3°18'00" E	20.39'
L14	S 66°22'15" E	76.95'
L15	N 35°56'26" W (R.)	6.88'
L16	N 00°24'45" W	24.95'
L17	N 20°47'36" E (N.R.)	16.23'
L18	N 40°06'01" E	36.01'
L19	N 17°41'06" W	36.75'
L20	N 54°00'04" W	22.36'
L21	N 30°13'15" W	32.77'
L22	N 15°03'19" W	34.44'
L23	N 00°19'04" W	6.87'
L24	N 00°19'04" W	14.83'
L25	N 01°54'24" E	17.74'
L26	S 01°54'24" W	50.17'
L27	N 00°20'16" W	45.87'
L28	N 00°20'16" W	24.98'
L29	N 44°56'03" E	42.51'
L30	S 45°03'57" E	42.29'

CURVE	RADIUS	DELTA	LENGTH	TANGENT	CHORD	BEARING
1	175.00'	07°26'37"	22.43'	11.23'	22.43'	N 03°21'44" E
2	275.00'	43°52'03"	210.65'	110.74'	205.44'	N 28°57'34" E
3	375.00'	49°24'54"	316.84'	158.57'	307.50'	N 23°05'47" E
4	85.00'	27°18'15"	40.51'	20.65'	40.12'	N 13°18'52" E
5	175.00'	54°36'30"	166.79'	80.34'	160.55'	N 00°20'16" W
6	85.00'	27°18'15"	40.51'	20.65'	40.12'	N 13°18'52" W
7	150.00'	07°20'37"	19.23'	9.63'	19.21'	N 03°21'44" E
8	250.00'	22°12'44"	87.14'	49.19'	96.53'	N 18°09'29" E
9	250.00'	21°18'19"	84.27'	47.70'	93.71'	N 40°20'26" E
10	250.00'	43°52'03"	191.41'	100.67'	186.77'	N 28°57'34" E
11	350.00'	12°46'33"	78.04'	39.18'	77.88'	N 47°16'52" E
12	350.00'	23°59'59"	144.57'	73.33'	143.54'	N 23°05'47" E
13	350.00'	11°58'02"	73.10'	36.69'	72.97'	S 86°40'52" E
14	350.00'	48°24'34"	295.72'	157.33'	287.00'	N 25°05'53" E
15	25.00'	48°11'23"	21.03'	11.18'	20.41'	S 86°50'56" W
16	50.00'	48°29'26"	42.32'	22.52'	41.08'	S 58°51'11" E
17	50.00'	75°24'28"	66.11'	38.89'	61.40'	N 81°07'22" E
18	50.00'	84°08'37"	82.13'	53.72'	73.20'	N 23°48'41" W
19	50.00'	218°21'32"	190.55'	-143.75'	94.40'	N 38°18'47" E
20	50.00'	70°31'44"	30.77'	17.68'	28.87'	N 35°36'08" W
21	60.00'	27°18'15"	28.59'	14.57'	28.32'	N 13°18'52" E
22	200.00'	21°46'35"	76.01'	38.47'	75.56'	N 16°04'54" E
23	200.00'	29°20'08"	102.40'	52.35'	101.29'	N 08°28'40" W
24	200.00'	03°29'47"	12.20'	6.10'	12.20'	N 25°35'38" W
25	200.00'	54°36'30"	190.62'	103.25'	183.40'	N 00°20'16" W
26	66.00'	27°18'15"	28.59'	14.57'	28.32'	N 13°18'52" W
27	25.00'	70°31'44"	30.77'	17.68'	28.87'	N 34°36'06" E
28	50.00'	69°05'58"	28.80'	14.91'	28.80'	N 40°20'26" E
29	50.00'	76°33'50"	66.81'	39.46'	61.95'	N 27°58'03" E
30	50.00'	17°59'47"	62.83'	36.32'	58.78'	S 77°45'08" W
31	50.00'	208°25'13"	181.90'	127.33'	180.30'	N 40°20'26" E
32	25.00'	48°11'23"	21.03'	11.18'	20.41'	S 85°50'56" W
33	25.00'	48°11'23"	21.03'	11.18'	20.41'	N 65°57'41" W
34	50.00'	10°00'42"	13.97'	7.03'	13.97'	N 48°59'29" W
35	50.00'	84°17'19"	73.56'	45.25'	67.10'	S 79°58'39" W
36	50.00'	84°17'19"	73.56'	45.25'	67.10'	S 04°16'40" E
37	50.00'	73°52'59"	64.48'	35.02'	61.01'	N 33°59'56" W
38	50.00'	17°54'27"	15.63'	7.88'	15.58'	N 50°42'28" E
39	50.00'	276°22'46"	241.19'	-144.72'	66.67'	S 00°03'23" E
40	25.00'	48°11'23"	21.03'	11.18'	20.41'	N 65°50'56" W
41	25.00'	89°43'01"	39.11'	24.86'	35.77'	S 49°11'49" W
42	110.00'	27°18'15"	52.42'	26.72'	51.93'	S 13°59'23" E
43	150.00'	21°32'02"	86.38'	28.52'	86.04'	N 16°32'20" W
44	150.00'	33°04'28"	86.59'	44.34'	85.39'	N 40°20'26" W
45	150.00'	54°36'30"	142.96'	77.43'	137.61'	S 00°20'16" E
46	110.00'	27°18'15"	52.42'	26.72'	51.93'	S 13°58'52" W
47	25.00'	89°05'25"	43.48'	28.60'	35.02'	S 48°29'04" E
48	400.00'	07°10'24"	50.08'	25.07'	50.03'	N 84°17'02" W
49	400.00'	17°48'11"	124.96'	62.53'	123.58'	S 83°44'40" W
50	400.00'	20°04'10"	141.72'	71.61'	140.68'	S 84°14'40" W
51	400.00'	03°09'58"	22.10'	11.05'	22.10'	S 52°28'35" W
52	400.00'	48°24'34"	337.96'	179.81'	328.00'	S 75°05'53" W
53	300.00'	17°50'10"	83.39'	47.88'	83.03'	N 03°19'26" W
54	300.00'	20°49'07"	109.01'	55.11'	108.41'	S 22°38'52" W
55	300.00'	05°12'46"	27.29'	13.66'	27.28'	S 03°37'56" W
56	300.00'	43°52'03"	292.69'	120.60'	294.12'	N 23°05'47" W
57	200.00'	07°20'37"	25.63'	12.83'	25.62'	S 03°21'44" W
58	170.00'	01°41'07"	5.00'	2.50'	5.00'	N 18°49'39" W
59	170.00'	54°53'58"	162.99'	88.37'	166.82'	N 08°20'01" E
60	170.00'	56°37'05"	167.99'	91.57'	161.24'	N 08°59'29" E
61	25.00'	35°31'42"	15.50'	8.01'	15.25'	N 18°10'36" W
62	10.00'	89°33'15"	12.15'	6.98'	11.42'	N 35°14'20" W
63	100.00'	14°09'45"	24.72'	12.42'	24.68'	N 62°59'24" E
64	25.00'	82°53'54"	36.17'	22.08'	33.10'	N 02°58'42" W
65	4.00'	104°52'59"	7.33'	4.21'	6.33'	N 02°58'42" W
66	4.00'	75°01'51"	5.24'	3.07'	4.87'	N 35°36'22" E
67	4.00'	180°00'00"	12.57'	N/A	8.00'	N 88°05'36" W
68	177.26'	104°15'59"	33.09'	16.59'	33.04'	N 07°10'04" E
69	2.48'	59°24'42"	2.57'	1.42'	2.48'	N 42°18'18" E
70	2.48'	109°53'44"	4.78'	3.34'	4.06'	S 53°02'26" E
71	2.48'	169°19'27"	7.34'	26.53'	4.84'	S 82°45'00" E
72	85.00'	01°58'57"	32.61'	16.51'	32.41'	N 16°39'03" W
73	85.00'	05°19'18"	7.90'	3.95'	7.89'	N 02°59'55" W
74	2.50'	90°55'21"	3.97'	2.54'	3.96'	S 53°38'59" W
75	2.50'	52°01'30"	2.72'	2.22'	2.19'	N 44°55'24" W
76	2.50'	142°56'51"	6.24'	7.46'	4.74'	S 89°39'44" W
77	85.00'	20°45'29"	30.98'	15.66'	30.81'	N 08°29'06" W
78	49.50'	16°44'39"	14.46'	7.28'	14.45'	N 08°29'06" W
79	6.00'	118°44'00"	12.22'	9.74'	10.22'	N 43°31'07" E
80	6.00'	53°48'32"	5.63'	3.04'	5.43'	S 91°23'29" E
81	6.00'	170°03'22"	17.96'	72.53'	11.96'	N 70°23'29" E
82	40.50'	17°33'56"	12.30'	6.20'	12.25'	S 15°36'23" E
83	85.00'	25°08'43"	37.45'	19.03'	37.15'	S 05°36'27" W
84	200.00'	02°28'58"	8.67'	4.33'	8.67'	S 02°58'42" W
85	150.00'	03°10'07"	6.30'	4.15'	8.29'	N 01°16'00" E

LOT	SQ. FT.	± AC.	±
1	15,936	0.36	
2	18,777	0.43	
3	18,286	0.42	
4	31,744	0.73	
5	15,928	0.36	
6	15,924	0.34	
7	15,923	0.34	
8	20,623	0.47	
9	18,503	0.42	
10	15,900	0.34	
11	15,986	0.36	
12	21,789	0.50	
13	15,101	0.35	
14	15,929	0.37	
15	15,902	0.34	
16	15,900	0.34	
17	15,900	0.34	
18	15,963	0.36	
19	21,794	0.50	
20	15,912	0.36	
21	15,913	0.34	
22	15,900	0.34	
23	15,900	0.34	
24	21,780	0.50	
25	17,072	0.39	
26	20,213	0.48	
27	15,983	0.36	
28	15,962	0.36	
29	15,904	0.36	
30	18,761	0.43	
31	22,862	0.52	
32	21,298	0.49	

LEGEND	
P.C.	POINT-OF-CURVATURE
P.T.	POINT-OF-TANGENCY
P.C.C.	POINT-OF-COMPOUND CURVATURE
P.R.C.	POINT-OF-REVERSE CURVATURE
P.I.	POINT-OF-INTERSECTION
R.P.	RADIUS POINT
P.B.	PLAT BOOK
P.G.	PAGE
R/W	RIGHT-OF-WAY
±	CENTERLINE
P.R.M.	PERMANENT REFERENCE MONUMENT
(N.R.)	NON-RADIAL LINE
(R.)	RADIAL LINE
(TYP.)	TYPICAL
UTL.	UTILITY
EASMT.	EASEMENT



Bussen-Mayer Engineering Group
100 PARNELL STREET • MERRITT ISLAND, FLORIDA 32963
PH. NO.: (407) 468-0010

