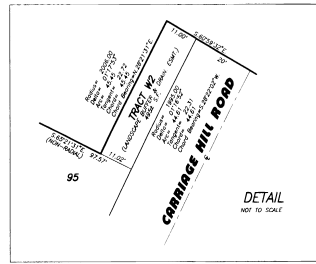
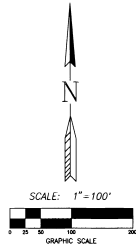
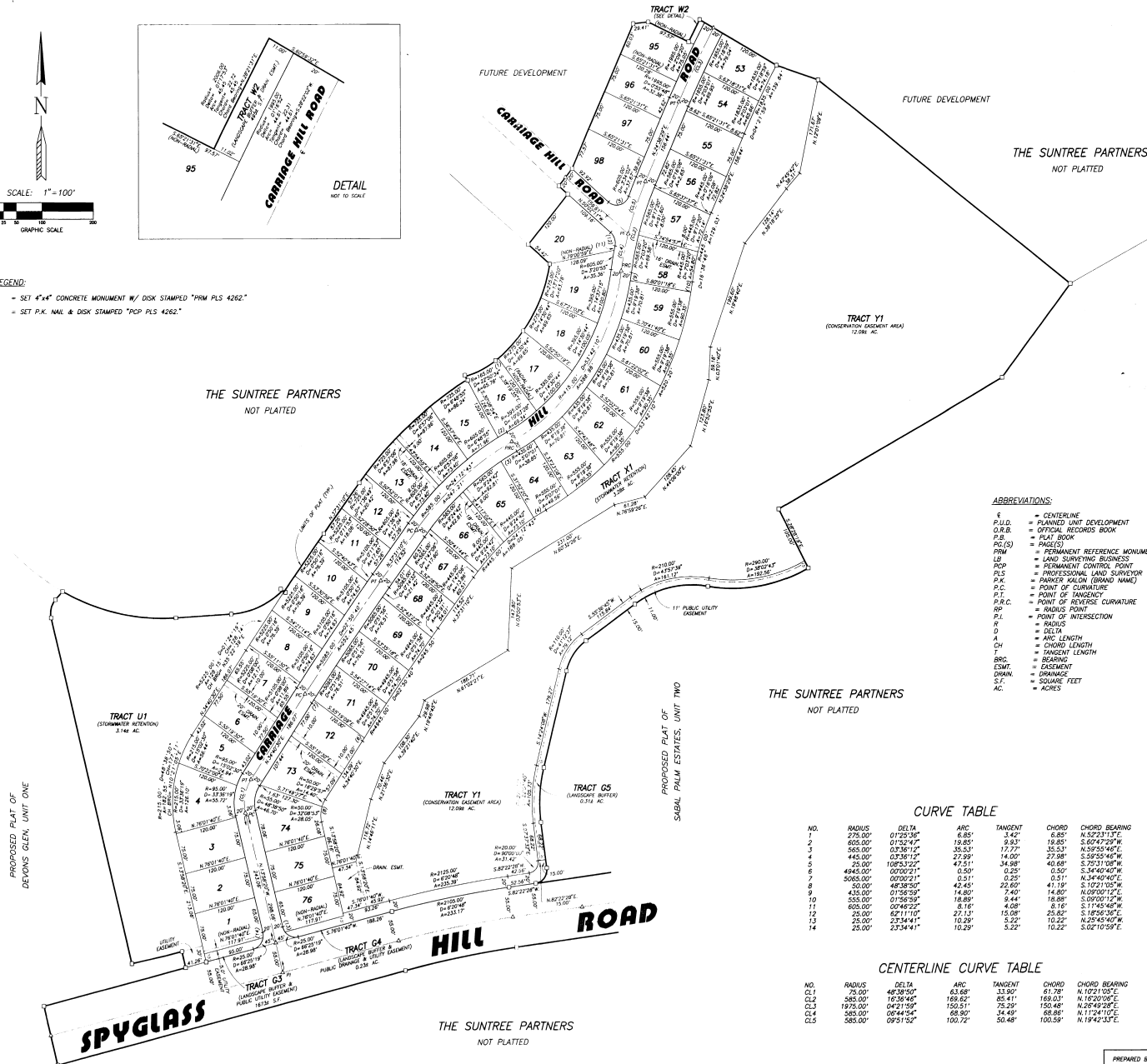


MANDARIN LAKES, UNIT ONE

PLAT BOOK 41 PAGE 38
 SHEET 2 OF 2
 SECTION 11, TWP. 26 S., RANGE 36 E.



- LEGEND:**
- - SET 4"x4" CONCRETE MONUMENT W/ DISK STAMPED "PRM PLS 4262."
 - △ - SET P.K. NAIL & DISK STAMPED "PCP PLS 4262."



- ABBREVIATIONS:**
- CL = CENTERLINE
 - P.L.D. = PLANNED UNIT DEVELOPMENT
 - O.R.B. = OFFICIAL RECORDS BOOK
 - P.B. = PLAT BOOK
 - PL(S) = PLAT(S)
 - PRM = PERMANENT REFERENCE MONUMENT
 - LSB = LAND SURVEYING BUSINESS
 - POP = PERMANENT CONTROL POINT
 - PLS = PROFESSIONAL LAND SURVEYOR
 - P.K. = PARKER KALON (BRAND NAME)
 - P.C. = POINT OF CURVATURE
 - P.T. = POINT OF TANGENCY
 - P.R.C. = POINT OF REVERSE CURVATURE
 - R.P. = RADIUS POINT
 - P.I. = POINT OF INTERSECTION
 - R = RADIUS
 - D = DELTA
 - A = ARC LENGTH
 - CH = CHORD LENGTH
 - T = TANGENT LENGTH
 - BRG. = BEARING
 - ESMT. = EASEMENT
 - DRAIN. = DRAINAGE
 - S.F. = SQUARE FEET
 - AC. = ACRES

CURVE TABLE

NO.	RADIUS	DELTA	ARC	TANGENT	CHORD	CHORD BEARING
1	273.00'	34.21°	6.85'	3.42'	6.85'	N.5223.13°E
2	605.00'	01°52'47"	19.85'	9.93'	19.85'	S.69°47'29"W
3	550.00'	03°56'12"	35.53'	17.77'	35.53'	N.5255.94°E
4	443.00'	03°56'12"	27.99'	14.00'	27.99'	S.59°25'46"W
5	25.00'	106°03'22"	42.51'	34.98'	40.68'	S.25°31'08"W
6	4943.00'	00°00'21"	0.50'	0.25'	0.50'	S.34°40'40"W
7	5063.00'	00°00'21"	0.51'	0.25'	0.51'	N.34°40'40"E
8	50.00'	48°38'50"	42.45'	22.60'	41.19'	S.10°21'05"W
9	433.00'	01°58'59"	14.80'	7.40'	14.80'	N.09°00'12"E
10	555.00'	01°58'59"	18.89'	9.44'	18.89'	S.09°00'12"W
11	605.00'	03°46'22"	8.18'	4.08'	8.18'	S.1°45'48"W
12	23.00'	11°11'00"	27.13'	15.08'	25.82'	S.18°36'36"E
13	25.00'	23°34'41"	10.29'	10.22'	10.22'	N.25°45'40"W
14	23.00'	23°34'41"	10.29'	3.22'	10.22'	S.62°10'59"E

CENTERLINE CURVE TABLE

NO.	RADIUS	DELTA	ARC	TANGENT	CHORD	CHORD BEARING
CL1	75.00'	48°38'50"	63.68'	33.90'	61.78'	N.10°21'05"E
CL2	585.00'	18°38'46"	168.62'	85.41'	169.03'	N.10°30'08"E
CL3	1975.00'	04°21'59"	150.51'	75.25'	150.48'	N.26°49'28"E
CL4	585.00'	06°44'54"	88.90'	34.49'	88.86'	N.17°41'11"E
CL5	585.00'	09°51'52"	100.72'	50.48'	100.59'	N.18°42'13"E

NOTICE: THERE MAY BE ADDITIONAL RESTRICTIONS THAT ARE NOT RECORDED ON THIS PLAT THAT MAY BE FOUND IN THE PUBLIC RECORDS OF THIS COUNTY.

PREPARED BY:
ALLEN
 Engineering, Inc.
 ENGINEERS - SURVEYORS
 188 WIDE LAKE, P.O. BOX 261323
 COLUMBIANA, NORTH CAROLINA 28028-1323
 TELEPHONE: (407)793-7443 FAX: (407)793-5862

MAN/AC/22/DWG