

DRAWING NUMBER:
40-90

DRAWING NUMBER

DRAWING NUMBER

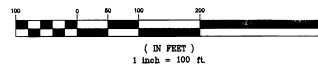
DRAWING NUMBER

SUNSET GROVES UNIT 1

SEE SHEET 1 FOR LEGAL DESCRIPTION, SURVEYORS NOTES AND TRACT DATA.



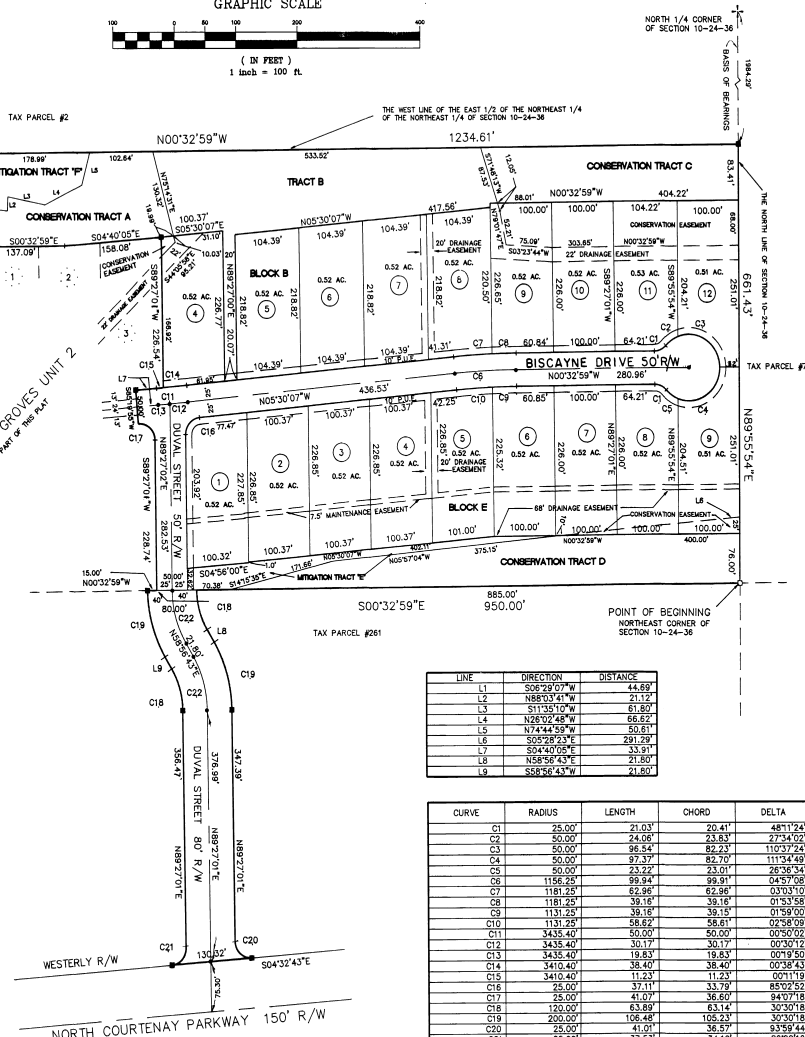
GRAPHIC SCALE



TAX PARCEL #17

TAX PARCEL #16 & #28

PROPOSED SUNSET GROVES UNIT 2
NOT A PART OF THIS PLAT



LINE	DIRECTION	DISTANCE
L1	S02°29'07"W	44.69'
L2	N88°03'41"W	21.12'
L3	S11°34'10"W	61.80'
L4	N28°02'48"W	65.63'
L5	N74°44'59"W	50.61'
L6	S05°28'23"E	291.29'
L7	S04°40'05"E	33.91'
L8	N58°58'43"E	21.80'
L9	S58°58'43"W	21.80'

CURVE	RADIUS	LENGTH	CHORD	DELTA
C1	25.00'	21.03'	20.41'	48°17'24"
C2	50.00'	24.06'	23.63'	27°34'02"
C3	50.00'	96.54'	82.23'	110°37'24"
C4	50.00'	97.37'	82.79'	111°34'48"
C5	50.00'	23.22'	23.01'	26°36'34"
C6	1156.25'	99.94'	99.91'	04°57'06"
C7	1181.25'	62.86'	62.86'	07°03'10"
C8	1181.25'	39.18'	39.18'	01°53'58"
C9	1131.25'	58.16'	58.15'	01°59'00"
C10	1131.25'	58.62'	58.61'	02°38'09"
C11	3435.40'	50.00'	50.00'	00°50'00"
C12	3435.40'	30.17'	30.17'	00°30'12"
C13	3435.40'	19.63'	19.63'	00°19'40"
C14	3410.40'	38.40'	38.40'	00°38'43"
C15	3410.40'	11.23'	11.23'	00°11'19"
C16	25.00'	37.11'	37.79'	83°02'45"
C17	25.00'	41.07'	36.60'	94°07'18"
C18	120.00'	63.89'	63.14'	30°30'18"
C19	200.00'	108.48'	105.23'	30°20'18"
C20	25.00'	41.01'	36.57'	93°59'44"
C21	25.00'	37.53'	34.10'	86°00'18"
C22	160.00'	35.19'	89.18'	30°30'18"

ISLAND SURVEYING & MAPPING CO.

2555 N. COURTENAY PKWY. #314, MERRITT ISLAND, FL 32953
TELEPHONE: (407) 452-1738 FAX: (407) 452-7256

THERE MAY BE ADDITIONAL RESTRICTIONS THAT ARE NOT RECORDED ON THIS PLAT THAT MAY BE FOUND IN THE PUBLIC RECORDS OF BREVARD COUNTY, FLORIDA