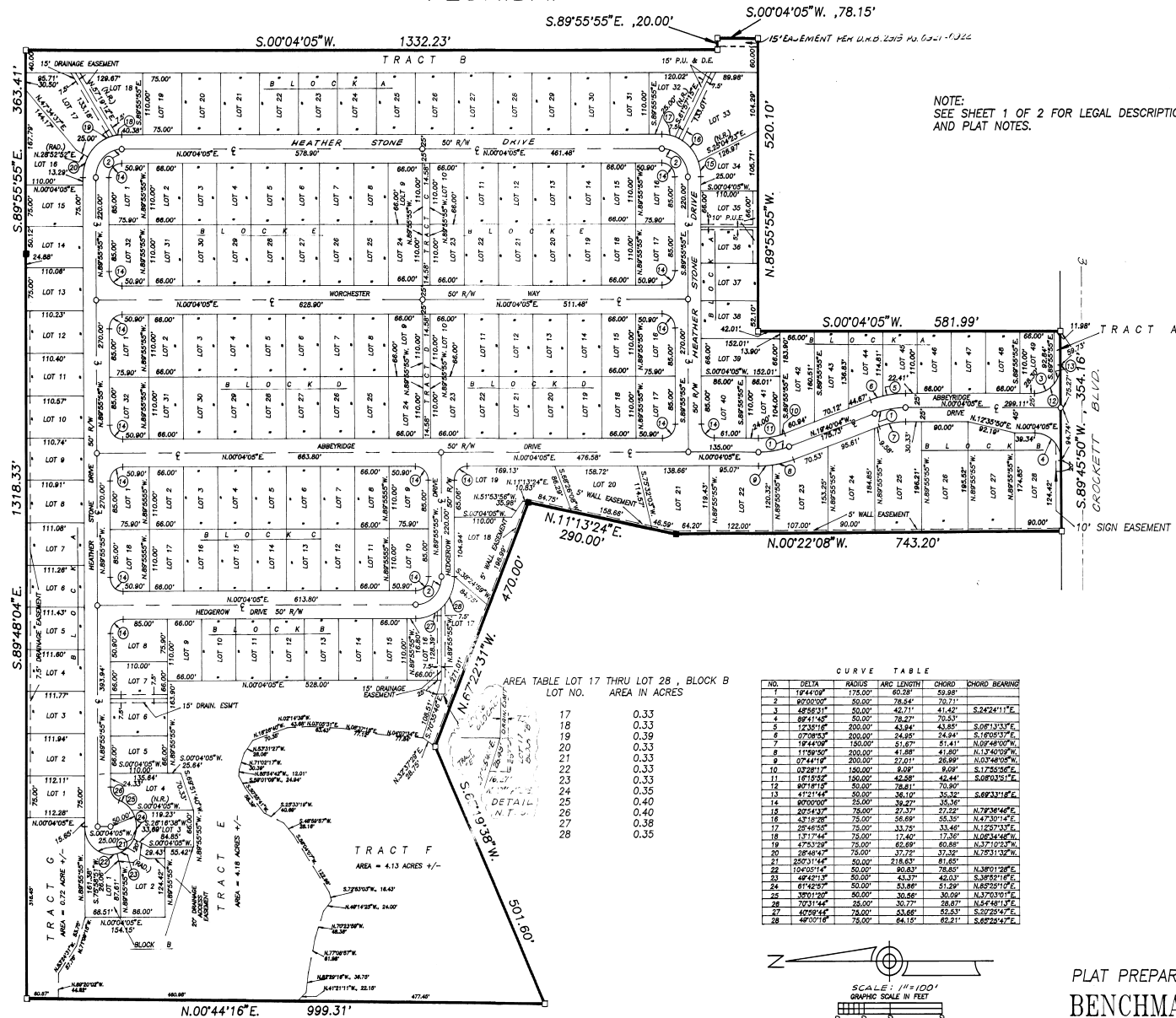


COPPERFIELD

A SUBDIVISION LYING IN SECTIONS 14, 15, 22 & 23,
TOWNSHIP 24 SOUTH, RANGE 36 EAST, BREVARD COUNTY
FLORIDA.



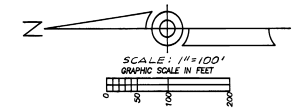
NOTE:
SEE SHEET 1 OF 2 FOR LEGAL DESCRIPTION
AND PLAT NOTES.

CURVE TABLE

NO.	DELTA	RADIUS	ARC LENGTH	CHORD	CHORD BEARING
1	19°44'00"	175.00'	60.28'	59.98'	
2	0°00'00"	50.00'	78.54'	79.71'	
3	48°58'31"	50.00'	42.71'	41.42'	S.24°24'11"E
4	89°11'45"	50.00'	78.47'	70.53'	
5	12°21'19"	200.00'	43.84'	43.85'	S.06°13'33"E
6	0°00'00"	200.00'	24.85'	24.94'	S.16°08'07"E
7	14°45'09"	150.00'	51.67'	51.41'	N.09°48'00"W
8	11°59'50"	200.00'	41.88'	41.80'	N.13°40'50"W
9	0°00'00"	200.00'	27.01'	26.99'	N.00°48'00"W
10	0°00'00"	150.00'	8.08'	8.08'	S.17°28'00"E
11	16°15'52"	180.00'	42.58'	42.44'	S.08°03'51"E
12	90°18'19"	50.00'	78.61'	70.90'	
13	4°12'14"	50.00'	38.10'	35.32'	S.89°33'18"E
14	0°00'00"	50.00'	38.47'	35.36'	
15	20°51'32"	75.00'	27.37'	27.22'	N.79°34'46"E
16	18°17'44"	75.00'	55.69'	55.35'	N.47°30'18"E
17	28°48'55"	75.00'	33.72'	33.46'	N.12°57'33"E
18	1°11'44"	75.00'	17.40'	17.30'	N.08°24'00"W
19	47°31'29"	75.00'	60.69'	60.88'	N.37°10'33"W
20	38°48'47"	75.00'	37.72'	37.32'	N.52°31'02"W
21	22°01'14"	50.00'	21.83'	21.65'	
22	12°00'14"	50.00'	30.83'	28.85'	N.39°01'28"E
23	49°47'33"	50.00'	43.37'	42.03'	S.39°57'18"E
24	61°42'05"	50.00'	53.88'	51.29'	N.65°22'10"E
25	30°11'20"	50.00'	30.58'	30.09'	N.37°03'19"E
26	7°21'44"	25.00'	30.77'	28.87'	N.64°48'13"E
27	4°08'44"	75.00'	53.66'	52.53'	S.07°25'47"E
28	49°00'18"	75.00'	64.18'	62.21'	S.67°22'47"E

AREA TABLE LOT 17 THRU LOT 28, BLOCK B
LOT NO. AREA IN ACRES

17	0.33
18	0.33
19	0.39
20	0.33
21	0.33
22	0.33
23	0.33
24	0.35
25	0.40
26	0.40
27	0.38
28	0.35



PLAT PREPARED BY:
BENCHMARK LAND SURVEYING, INC.
BREVARD COUNTY, FLORIDA