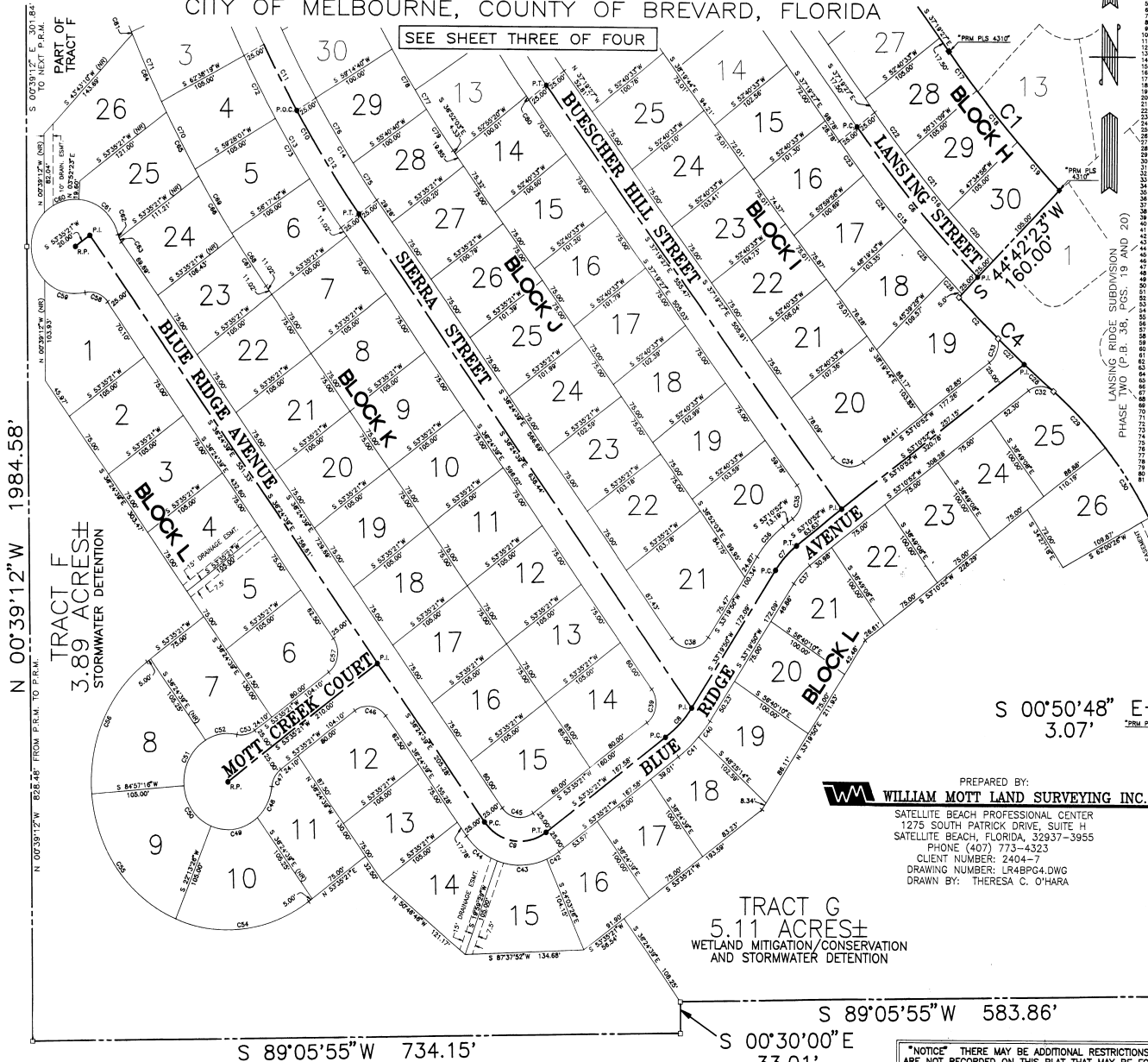
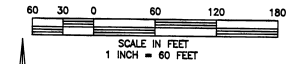


# Lansing Ridge Subdivision Phase Four B

PLATBOOK 40 PAGE 44  
SHEET 4 OF 4  
SECTION 18 TWP. 27 S., RANGE 37 E.

Being a Replat of a Portion of Sunny Pines No. 1, (P.B. 12, P.G. 21) and Other Lands  
SECTIONS 7 AND 18, TOWNSHIP 27 SOUTH, RANGE 37 EAST  
CITY OF MELBOURNE, COUNTY OF BREVARD, FLORIDA



CURVE	DELTA	RADIUS	ARC	CHORD	TANGENT	CHORD BISECTOR	CURVE DATA TABLE	
							CHORD	TANGENT
1	7.0000	1370.00	137.00	136.98	136.98	136.98	136.98	136.98
2	7.0000	1370.00	137.00	136.98	136.98	136.98	136.98	136.98
3	7.0000	1370.00	137.00	136.98	136.98	136.98	136.98	136.98
4	7.0000	1370.00	137.00	136.98	136.98	136.98	136.98	136.98
5	7.0000	1370.00	137.00	136.98	136.98	136.98	136.98	136.98
6	7.0000	1370.00	137.00	136.98	136.98	136.98	136.98	136.98
7	7.0000	1370.00	137.00	136.98	136.98	136.98	136.98	136.98
8	7.0000	1370.00	137.00	136.98	136.98	136.98	136.98	136.98
9	7.0000	1370.00	137.00	136.98	136.98	136.98	136.98	136.98
10	7.0000	1370.00	137.00	136.98	136.98	136.98	136.98	136.98
11	7.0000	1370.00	137.00	136.98	136.98	136.98	136.98	136.98
12	7.0000	1370.00	137.00	136.98	136.98	136.98	136.98	136.98
13	7.0000	1370.00	137.00	136.98	136.98	136.98	136.98	136.98
14	7.0000	1370.00	137.00	136.98	136.98	136.98	136.98	136.98
15	7.0000	1370.00	137.00	136.98	136.98	136.98	136.98	136.98
16	7.0000	1370.00	137.00	136.98	136.98	136.98	136.98	136.98
17	7.0000	1370.00	137.00	136.98	136.98	136.98	136.98	136.98
18	7.0000	1370.00	137.00	136.98	136.98	136.98	136.98	136.98
19	7.0000	1370.00	137.00	136.98	136.98	136.98	136.98	136.98
20	7.0000	1370.00	137.00	136.98	136.98	136.98	136.98	136.98
21	7.0000	1370.00	137.00	136.98	136.98	136.98	136.98	136.98
22	7.0000	1370.00	137.00	136.98	136.98	136.98	136.98	136.98
23	7.0000	1370.00	137.00	136.98	136.98	136.98	136.98	136.98
24	7.0000	1370.00	137.00	136.98	136.98	136.98	136.98	136.98
25	7.0000	1370.00	137.00	136.98	136.98	136.98	136.98	136.98
26	7.0000	1370.00	137.00	136.98	136.98	136.98	136.98	136.98
27	7.0000	1370.00	137.00	136.98	136.98	136.98	136.98	136.98
28	7.0000	1370.00	137.00	136.98	136.98	136.98	136.98	136.98
29	7.0000	1370.00	137.00	136.98	136.98	136.98	136.98	136.98
30	7.0000	1370.00	137.00	136.98	136.98	136.98	136.98	136.98

- LEGEND:
- = PERMANENT CONTROL POINT SET "TOP PLS 5067"
  - = PERMANENT REFERENCE MONUMENT FOUND
  - = PERMANENT REFERENCE MONUMENT SET MARKED "PRM PLS 5067"

PREPARED BY:  
**WILLIAM MOTT LAND SURVEYING INC.**  
SATELLITE BEACH PROFESSIONAL CENTER  
1275 SOUTH PATRICK DRIVE, SUITE H  
SATELLITE BEACH, FLORIDA, 32937-3955  
PHONE (407) 773-4323  
CLIENT NUMBER: 2404-7  
DRAWING NUMBER: LR48P04.DWG  
DRAWN BY: THERESA C. O'HARA

TRACT G  
5.11 ACRES±  
WETLAND MITIGATION/CONSERVATION  
AND STORMWATER DETENTION

NOTE: ALL LOT LINES ARE RADIAL UNLESS SHOWN OTHERWISE BY (NR)

\*NOTICE\* THERE MAY BE ADDITIONAL RESTRICTIONS THAT ARE NOT RECORDED ON THIS PLAT THAT MAY BE FOUND IN THE PUBLIC RECORDS OF THIS COUNTY.