

# Lansing Ridge Subdivision Phase Four B

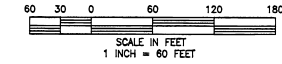
Being a Replat of a Portion of Sunny Pines No. 1, (P.B. 12, P.G. 21) and Other Lands  
SECTIONS 7 AND 18, TOWNSHIP 27 SOUTH, RANGE 37 EAST  
CITY OF MELBOURNE, COUNTY OF BREVARD, FLORIDA

- LEGEND:
- PERMANENT CONTROL POINT SET
  - PCP PLS 5067
  - PERMANENT REFERENCE MONUMENT FOUND
  - PERMANENT REFERENCE MONUMENT SET MARKED \*PRM PLS 5067

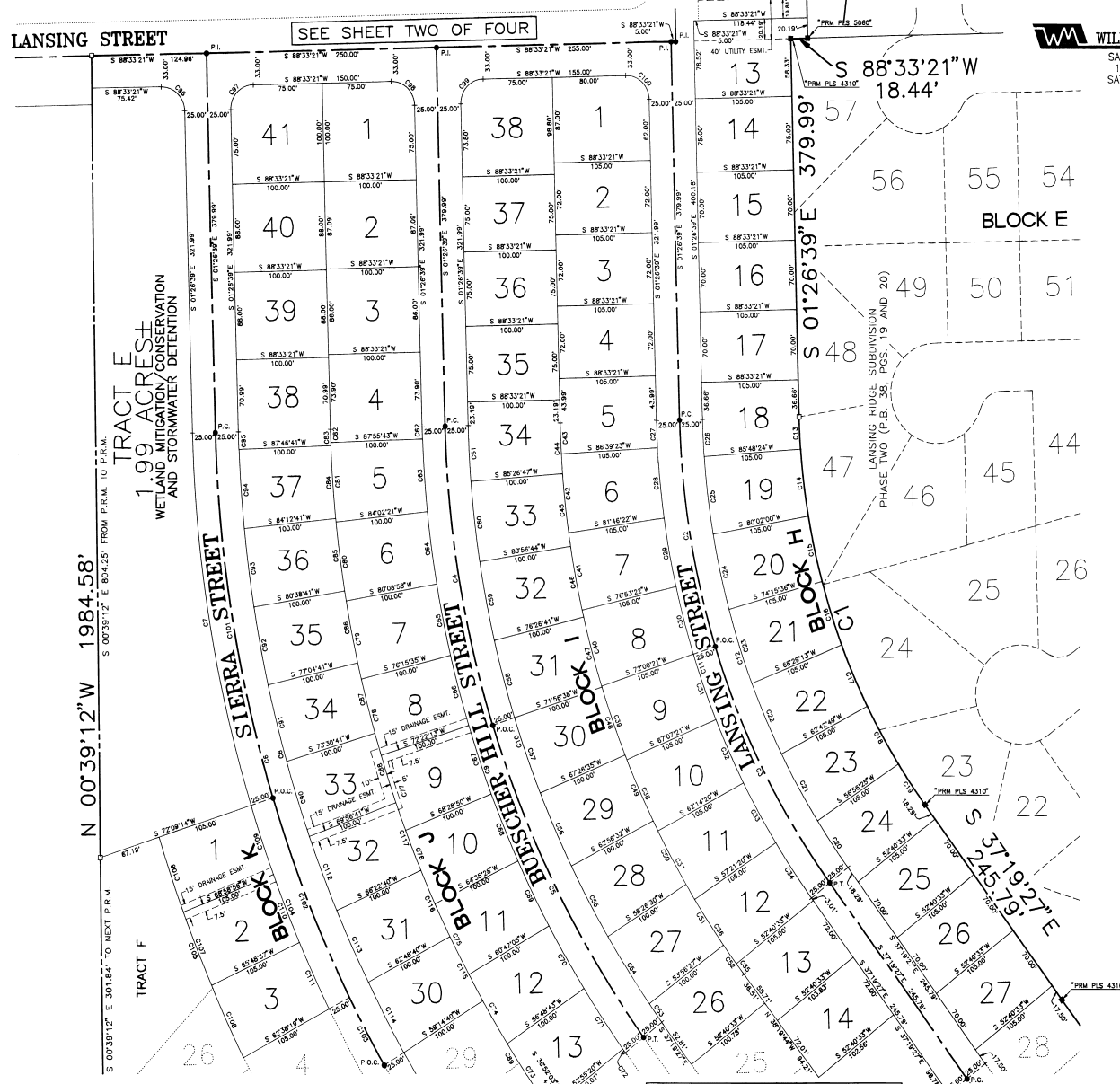


PREPARED BY:  
**WILLIAM MOTT LAND SURVEYING INC.**

SATELLITE BEACH PROFESSIONAL CENTER  
1275 SOUTH PATRICK DRIVE, SUITE H  
SATELLITE BEACH, FLORIDA, 32937-3955  
PHONE (407) 773-4223  
CLIENT NUMBER: 2404-7  
DRAWING NUMBER: LR4BPG3.DWG  
DRAWN BY: THERESA C. O'HARA



"NOTICE" THERE MAY BE ADDITIONAL RESTRICTIONS THAT ARE NOT RECORDED ON THIS PLAT THAT MAY BE FOUND IN THE PUBLIC RECORDS OF THIS COUNTY.



CURVE DATA TABLE

CURVE	DELTA	RADIUS	ARC CHORD	TANGENT	CHORD BISECT
1	3322.04'	875.00	418.27	412.75	216.83
2	1871.46'	800.00	231.08	230.28	116.26
3	1871.46'	800.00	231.08	230.28	116.26
4	1871.46'	800.00	231.08	230.28	116.26
5	1871.46'	800.00	231.08	230.28	116.26
6	1871.46'	800.00	231.08	230.28	116.26
7	1871.46'	800.00	231.08	230.28	116.26
8	1871.46'	800.00	231.08	230.28	116.26
9	1871.46'	800.00	231.08	230.28	116.26
10	1871.46'	800.00	231.08	230.28	116.26
11	3922.46'	825.00	516.63	268.23	267.10
12	3922.46'	825.00	516.63	268.23	267.10
13	744.07'	670.00	32.15	32.15	16.08
14	744.07'	670.00	32.15	32.15	16.08
15	744.07'	670.00	32.15	32.15	16.08
16	744.07'	670.00	32.15	32.15	16.08
17	744.07'	670.00	32.15	32.15	16.08
18	744.07'	670.00	32.15	32.15	16.08
19	744.07'	670.00	32.15	32.15	16.08
20	744.07'	670.00	32.15	32.15	16.08
21	744.07'	670.00	32.15	32.15	16.08
22	744.07'	670.00	32.15	32.15	16.08
23	744.07'	670.00	32.15	32.15	16.08
24	744.07'	670.00	32.15	32.15	16.08
25	744.07'	670.00	32.15	32.15	16.08
26	744.07'	670.00	32.15	32.15	16.08
27	744.07'	670.00	32.15	32.15	16.08
28	744.07'	670.00	32.15	32.15	16.08
29	744.07'	670.00	32.15	32.15	16.08
30	744.07'	670.00	32.15	32.15	16.08
31	744.07'	670.00	32.15	32.15	16.08
32	744.07'	670.00	32.15	32.15	16.08
33	744.07'	670.00	32.15	32.15	16.08
34	744.07'	670.00	32.15	32.15	16.08
35	744.07'	670.00	32.15	32.15	16.08
36	744.07'	670.00	32.15	32.15	16.08
37	744.07'	670.00	32.15	32.15	16.08
38	744.07'	670.00	32.15	32.15	16.08
39	744.07'	670.00	32.15	32.15	16.08
40	744.07'	670.00	32.15	32.15	16.08
41	744.07'	670.00	32.15	32.15	16.08
42	744.07'	670.00	32.15	32.15	16.08
43	744.07'	670.00	32.15	32.15	16.08
44	744.07'	670.00	32.15	32.15	16.08
45	744.07'	670.00	32.15	32.15	16.08
46	744.07'	670.00	32.15	32.15	16.08
47	744.07'	670.00	32.15	32.15	16.08
48	744.07'	670.00	32.15	32.15	16.08
49	744.07'	670.00	32.15	32.15	16.08
50	744.07'	670.00	32.15	32.15	16.08
51	744.07'	670.00	32.15	32.15	16.08
52	744.07'	670.00	32.15	32.15	16.08
53	744.07'	670.00	32.15	32.15	16.08
54	744.07'	670.00	32.15	32.15	16.08
55	744.07'	670.00	32.15	32.15	16.08
56	744.07'	670.00	32.15	32.15	16.08
57	744.07'	670.00	32.15	32.15	16.08
58	744.07'	670.00	32.15	32.15	16.08

SEE SHEET FOUR OF FOUR

NOTE: ALL LOT LINES ARE RADIAL UNLESS SHOWN OTHERWISE BY (NR)