

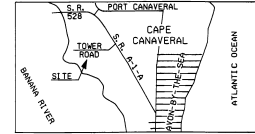
DISCOVERY BAY

SECTION 15, TOWNSHIP 24 SOUTH, RANGE 37 EAST
CITY OF CAPE CANAVERAL, BREVARD COUNTY, FLORIDA

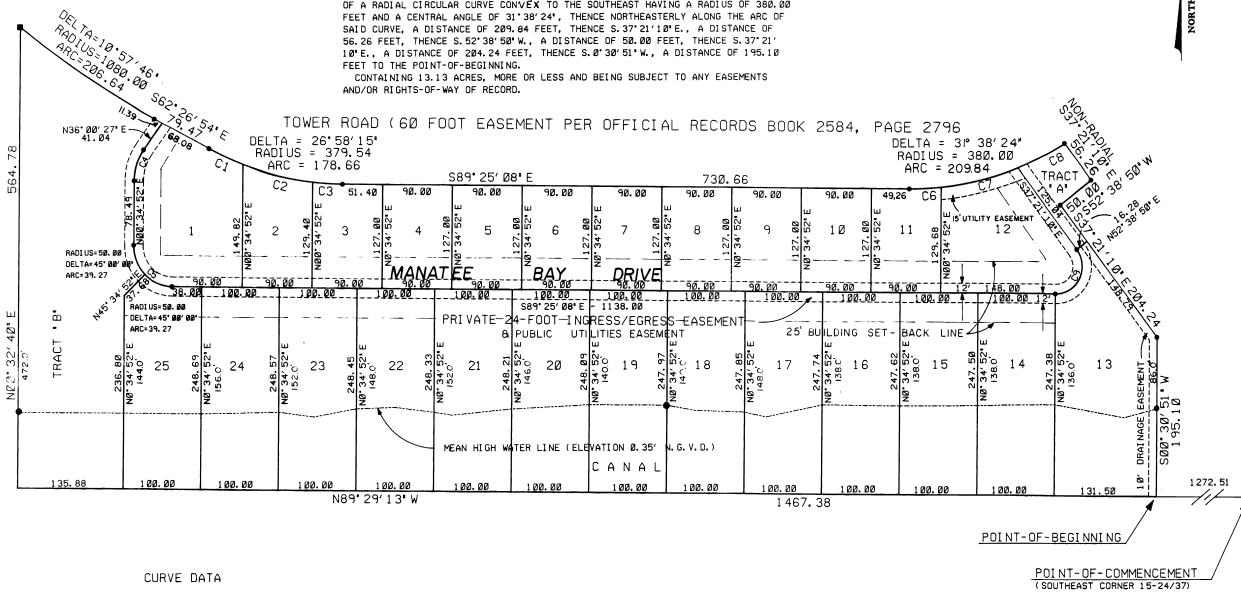
LEGAL DESCRIPTION

A PARCEL OF LAND LYING IN FRACTIONAL SECTION 15, TOWNSHIP 24 SOUTH, RANGE 37 EAST, TALLAHASSEE BASE MERIDIAN, BREVARD COUNTY, FLORIDA AND BEING MORE PARTICULARLY DESCRIBED AS FOLLOWS:

COMMENCE AT THE SOUTHEAST CORNER OF SAID SECTION 15, THENCE N. 89° 29' 13" W., ALONG THE SOUTH LINE OF SECTION 15, A DISTANCE OF 1272.51 FEET TO THE POINT-OF-BEGINNING, THENCE CONTINUE N. 89° 29' 13" W., ALONG SAID LINE, A DISTANCE OF 1467.38 FEET, THENCE W. 0° 32' 40" E., A DISTANCE OF 564.78 FEET TO A POINT ON A RADIAL CIRCULAR CURVE CONVEX TO THE SOUTHWEST HAVING A RADIAL BEARING OF N. 38° 38' 51" E., A RADIUS OF 1080.00 FEET AND A CENTRAL ANGLE OF 10° 57' 46", THENCE SOUTHEASTERLY, ALONG THE ARC OF SAID CURVE, A DISTANCE OF 206.64 FEET TO THE POINT OF TANGENCY, THENCE S. 62° 26' 54" E., A DISTANCE OF 79.47 FEET TO THE POINT OF CURVATURE OF A RADIAL CIRCULAR CURVE CONVEX TO THE SOUTH HAVING A RADIUS OF 379.54 FEET AND A CENTRAL ANGLE OF 26° 58' 15", THENCE SOUTH-EASTERLY, ALONG THE ARC OF SAID CURVE, A DISTANCE OF 178.66 FEET TO THE POINT OF TANGENCY, THENCE S. 89° 25' 08" E., ALONG THE SOUTH LINE OF A 60 FOOT INGRESS AND EGRESS EASEMENT RECORDED IN OFFICIAL RECORDS BOOK 2584, PAGE 2796, PUBLIC RECORDS OF BREVARD COUNTY, A DISTANCE 730.66 FEET TO THE POINT OF CURVATURE OF A RADIAL CIRCULAR CURVE CONVEX TO THE SOUTHEAST HAVING A RADIUS OF 380.00 FEET AND A CENTRAL ANGLE OF 31° 38' 24", THENCE NORTHEASTERLY ALONG THE ARC OF SAID CURVE, A DISTANCE OF 289.84 FEET, THENCE S. 37° 21' 10" E., A DISTANCE OF 56.26 FEET, THENCE S. 52° 38' 50" W., A DISTANCE OF 58.00 FEET, THENCE S. 37° 21' 10" E., A DISTANCE OF 204.24 FEET, THENCE S. 0° 38' 51" W., A DISTANCE OF 195.10 FEET TO THE POINT-OF-BEGINNING.
CONTAINING 13.13 ACRES, MORE OR LESS AND BEING SUBJECT TO ANY EASEMENTS AND/OR RIGHTS-OF-WAY OF RECORD.



VICINITY MAP
(NOT TO SCALE)



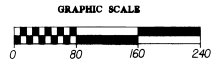
CURVE DATA

CURVE	RADIUS	DELTA	LENGTH	TANGENT	CHORD
C1	379.54	7° 18' 02"	47.48	23.77	47.45
C2	379.54	13° 57' 59"	92.52	46.49	92.29
C3	379.54	5° 58' 14"	38.67	19.35	38.65
C4	65.00	35° 25' 38"	48.19	28.76	39.55
C5	58.00	98° 00' 00"	78.54	58.00	78.71
C6	380.00	6° 10' 06"	40.91	20.47	40.89
C7	380.00	15° 15' 30"	101.64	51.12	101.34
C8	380.00	10° 08' 48"	67.29	33.74	67.21
C9	34.19	127° 58' 02"	76.34	76.00	61.44

SURVEYOR'S NOTES:

- INDICATES PERMANENT REFERENCE MONUMENT.
- BEARINGS DEPICTED HEREON ARE BASED ON OFFICIAL RECORDS BOOK 2584, PAGE 2796, PUBLIC RECORDS, BREVARD COUNTY, FLORIDA.
- THERE MAY BE ADDITIONAL RESTRICTIONS THAT ARE NOT RECORDED ON THE PLAT THAT MAY BE FOUND IN THE PUBLIC RECORDS OF BREVARD COUNTY, FLORIDA, AND SHALL ALSO BE EASEMENTS FOR THE CONSTRUCTION, INSTALLATION, OPERATION AND MAINTENANCE OF CABLE TELEVISION SERVICE.
- INDICATES FOUND REFERENCE MONUMENT.
- ⊙ INDICATES SECTION CORNER.
- TRACTS "A" & "B" ARE RESERVED FOR HOMEOWNERS ASSOCIATION.

FOR RESTRICTIONS SEE OFFICIAL RECORDS BOOK 3278 PAGE 0911



1 INCH = 80 FEET

TRACTS "A" AND "B" ARE RESERVED FOR HOME OWNERS ASSOCIATION

DEDICATION

KNOW ALL MEN BY THESE PRESENTS, That the Corporation named below, being the owner in fee simple of the lands described in DISCOVERY BAY hereby dedicates said lands and plat for the uses and purposes therein expressed and dedicates all roads, streets, alleys, thoroughfares, parks, canals, drainage easements, utility easements, lakes, pathways, open spaces and other rights of way, easements shown hereon to the perpetual use of the public, and IN WITNESS WHEREOF, has caused these presents to be signed and attested to by the officers named below and its corporate seal to be affixed hereto on
By: *A. J. Tezel*, President
DISCOVERY BAY DEVELOPMENT, INC. President
Attest: *Ali O. Tezel*

Signed and sealed in the presence of *William E. Morgan*
William M. Jolley

STATE of Florida COUNTY of Brevard
THIS IS TO CERTIFY, that on February 10, 1994 before me, an officer duly authorized to take acknowledgments in the State and County aforesaid, personally appeared *Ali O. Tezel* and *William E. Morgan* and *William M. Jolley* respectively, Considered and of the above named corporation incorporated under the laws of the State of Florida, to me known to be the individuals and officers described in and who executed the foregoing Dedication and severally acknowledged the execution thereof to be their free act and deed as such officers thereunto duly authorized; that the official seal of said corporation is duly affixed thereto; and that the said Dedication is the act and deed of said corporation.

IN WITNESS WHEREOF, I have hereunto set my hand and seal on the above date.
Susan L. Nelson
NOTARY PUBLIC
My Commission Expires
OFFICIAL NOTARY SEAL
SUSAN L. NELSON
COMMISSION NUMBER
CC267833
MY COMMISSION EXPIRES
MAY 25 1997

CERTIFICATE OF SURVEYOR
KNOW ALL MEN BY THESE PRESENTS, That the undersigned, being a licensed and registered land surveyor, does hereby certify that on 2-10-94 of the lands as shown in the foregoing plat, that said plat is a correct representation of the lands therein described and platted; that permanent reference monuments have been placed as shown thereon as required by Chapters 177 & 178 Florida Statutes; and that said land is located in Brevard County, Florida. Dated 2-10-94
William E. Morgan
Registration No. 3807

CERTIFICATE OF APPROVAL BY MUNICIPALITY
THIS IS TO CERTIFY, that on March 7, 1994 the City Council of the City of Cape Canaveral approved the foregoing plat.
Joey Salamone Mayor
Keith G. Miller City Clerk

CERTIFICATE OF ACCEPTANCE OF DEDICATION BY BOARD OF COUNTY COMMISSIONERS
THIS IS TO CERTIFY That the Board of County Commissioners hereby accepts all roads, streets, alleys, thoroughfares, parks, canals, drainage easements, utility easements, lakes, pathways, open spaces and other rights of way, easements and areas dedicated for public use on this plat.
Chairman of the Board
ATTEST: Clerk of the Board

CERTIFICATE OF APPROVAL BY BOARD OF COUNTY COMMISSIONERS
THIS IS TO CERTIFY, that on the foregoing plat was approved by the Board of County Commissioners of Brevard County, Florida.
Chairman of the Board
Clerk of the Board
Approved County Engineer

CERTIFICATE OF APPROVAL BY PLANNING AND ZONING COMMISSION
THIS IS TO CERTIFY, that on the foregoing plat was approved by the Planning and Zoning Director.
PLANNING AND ZONING COMMISSION
I HEREBY CERTIFY, That I have examined the foregoing plat and find that it complies in form with all the requirements of Chapter 177, Florida Statutes, and was filed to record on March 23, 1994 at 11:12 AM, File No. 578776
Standy Crawford
Clerk of the Circuit Court in and for Brevard County, Fla.