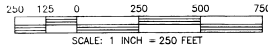
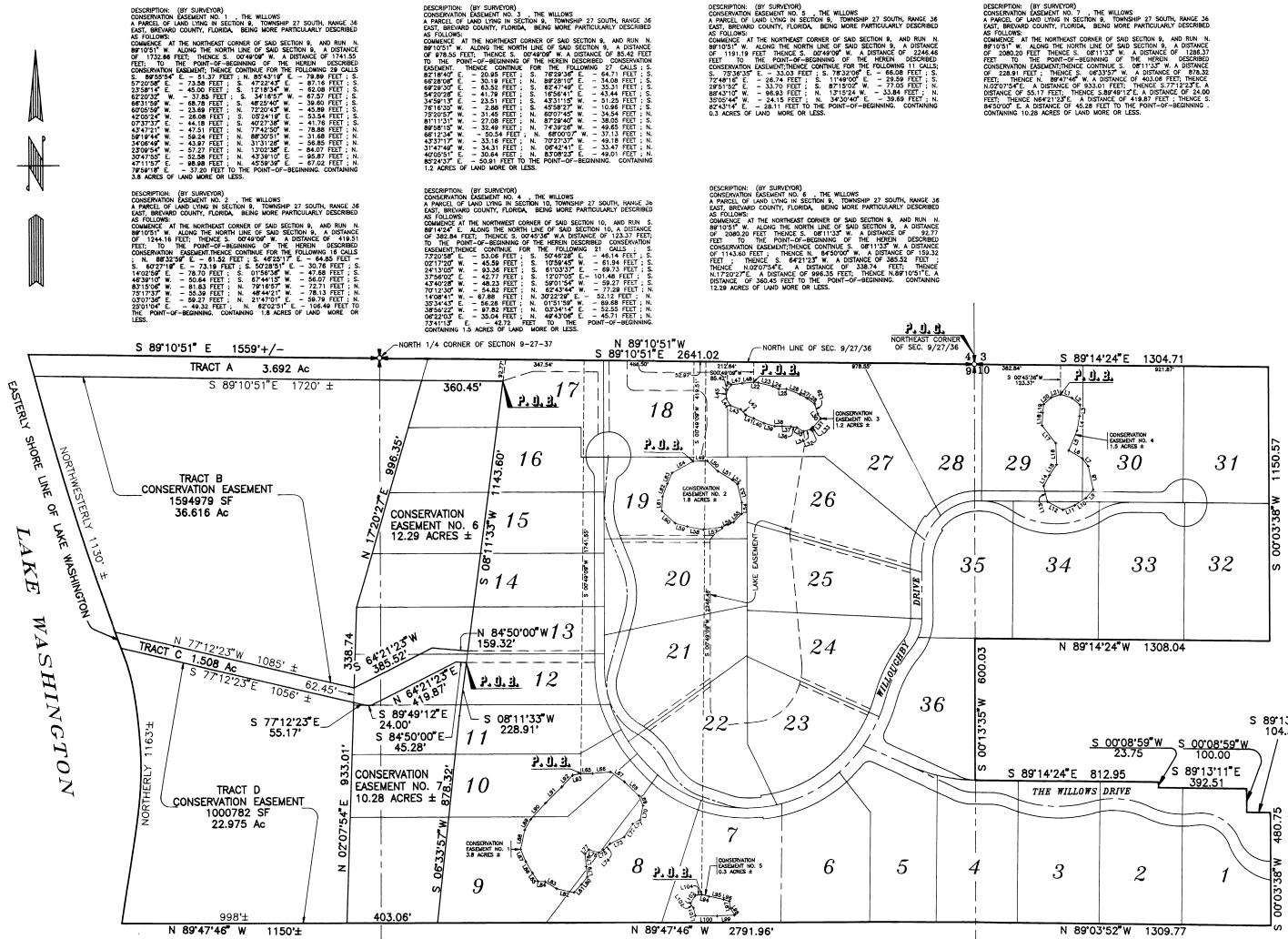


# THE WILLOWS

## A SUBDIVISION LYING IN SECTION 9 AND 10, TOWNSHIP 27 SOUTH, RANGE 36 EAST, BREVARD COUNTY, FLORIDA



"NOTICE" THERE MAY BE ADDITIONAL RESTRICTIONS THAT ARE NOT RECORDED ON THIS PLAT THAT MAY BE FOUND IN THE PUBLIC RECORDS OF THIS COUNTY



DESCRIPTION: (BY SURVEYOR)  
CONSERVATION EASEMENT NO. 1, THE WILLOWS  
A PARCEL OF LAND LYING IN SECTION 9, TOWNSHIP 27 SOUTH, RANGE 36  
EAST, BREVARD COUNTY, FLORIDA, BEING MORE PARTICULARLY DESCRIBED  
AS FOLLOWS:  
COMMENCE AT THE NORTHEAST CORNER OF SAID SECTION 9, AND RUN N.  
89°10'51" W. ALONG THE NORTH LINE OF SAID SECTION 9, A DISTANCE OF  
1744.50 FEET; THENCE S. 02°49'40" W. A DISTANCE OF 1744.50  
FEET TO THE POINT-OF-BEGINNING OF THE HEREIN DESCRIBED  
CONSERVATION EASEMENT; THENCE CONTINUE FOR THE FOLLOWING 19 CALLS  
S. 89°09'54" E. - 51.37 FEET; N. 82°45'11" E. - 79.89 FEET; S.  
57°59'11" E. - 73.58 FEET; S. 47°22'43" E. - 87.16 FEET; S.  
82°50'11" E. - 45.00 FEET; S. 12°18'54" E. - 42.00 FEET; S.  
27°59'11" E. - 88.19 FEET; S. 48°20'41" E. - 67.57 FEET; S.  
86°15'00" E. - 33.89 FEET; N. 72°20'45" W. - 45.89 FEET; S.  
60°26'54" W. - 26.88 FEET; S. 10°24'10" E. - 53.54 FEET; S.  
07°37'31" E. - 44.18 FEET; S. 40°27'30" W. - 41.76 FEET; S.  
42°52'51" W. - 47.51 FEET; N. 77°42'00" E. - 78.88 FEET; N.  
59°14'41" W. - 36.24 FEET; N. 88°30'51" W. - 31.88 FEET; N.  
56°04'00" W. - 43.07 FEET; N. 31°01'00" E. - 54.85 FEET; N.  
33°04'54" E. - 87.27 FEET; N. 13°02'30" E. - 84.07 FEET; N.  
30°47'02" E. - 52.58 FEET; N. 42°39'10" E. - 95.87 FEET; N.  
47°11'52" E. - 88.88 FEET; N. 42°39'10" E. - 87.02 FEET; N.  
78°48'18" E. - 37.20 FEET TO THE POINT-OF-BEGINNING, CONTAINING  
3.8 ACRES OF LAND MORE OR LESS.

DESCRIPTION: (BY SURVEYOR)  
CONSERVATION EASEMENT NO. 2, THE WILLOWS  
A PARCEL OF LAND LYING IN SECTION 9, TOWNSHIP 27 SOUTH, RANGE 36  
EAST, BREVARD COUNTY, FLORIDA, BEING MORE PARTICULARLY DESCRIBED  
AS FOLLOWS:  
COMMENCE AT THE NORTHEAST CORNER OF SAID SECTION 9, AND RUN N.  
89°10'51" W. ALONG THE NORTH LINE OF SAID SECTION 9, A DISTANCE  
OF 1244.18 FEET; THENCE S. 02°49'40" W. A DISTANCE OF 419.51  
FEET TO THE POINT-OF-BEGINNING OF THE HEREIN DESCRIBED  
CONSERVATION EASEMENT; THENCE CONTINUE FOR THE FOLLOWING 18 CALLS  
S. 89°23'04" E. - 81.50 FEET; S. 40°20'11" E. - 46.48 FEET; S.  
S. 40°27'11" E. - 73.19 FEET; S. 50°28'51" E. - 30.76 FEET; S.  
24°50'51" E. - 78.10 FEET; S. 07°18'00" W. - 47.08 FEET; S.  
48°39'11" W. - 50.84 FEET; S. 87°44'15" W. - 56.07 FEET; S.  
87°15'00" W. - 81.83 FEET; N. 78°18'57" E. - 72.71 FEET; N.  
75°17'37" W. - 55.29 FEET; N. 48°44'11" E. - 78.13 FEET; N.  
03°07'11" E. - 89.27 FEET; N. 2°47'51" E. - 106.78 FEET; N.  
25°01'00" E. - 40.32 FEET; N. 82°50'11" E. - 106.44 FEET; N.  
TO THE POINT-OF-BEGINNING, CONTAINING 1.8 ACRES OF LAND MORE  
OR LESS.

DESCRIPTION: (BY SURVEYOR)  
CONSERVATION EASEMENT NO. 3, THE WILLOWS  
A PARCEL OF LAND LYING IN SECTION 9, TOWNSHIP 27 SOUTH, RANGE 36  
EAST, BREVARD COUNTY, FLORIDA, BEING MORE PARTICULARLY DESCRIBED  
AS FOLLOWS:  
COMMENCE AT THE NORTHEAST CORNER OF SAID SECTION 9, AND RUN N.  
89°10'51" W. ALONG THE NORTH LINE OF SAID SECTION 9, A DISTANCE OF  
878.55 FEET; THENCE S. 02°49'40" W. A DISTANCE OF 1244.48  
FEET TO THE POINT-OF-BEGINNING OF THE HEREIN DESCRIBED  
CONSERVATION EASEMENT; THENCE CONTINUE FOR THE FOLLOWING 27 CALLS  
S. 89°23'04" E. - 81.50 FEET; S. 40°20'11" E. - 46.48 FEET; S.  
S. 40°27'11" E. - 73.19 FEET; S. 50°28'51" E. - 30.76 FEET; S.  
24°50'51" E. - 78.10 FEET; S. 07°18'00" W. - 47.08 FEET; S.  
48°39'11" W. - 50.84 FEET; S. 87°44'15" W. - 56.07 FEET; S.  
87°15'00" W. - 81.83 FEET; N. 78°18'57" E. - 72.71 FEET; N.  
75°17'37" W. - 55.29 FEET; N. 48°44'11" E. - 78.13 FEET; N.  
03°07'11" E. - 89.27 FEET; N. 2°47'51" E. - 106.78 FEET; N.  
25°01'00" E. - 40.32 FEET; N. 82°50'11" E. - 106.44 FEET; N.  
TO THE POINT-OF-BEGINNING, CONTAINING 1.0 ACRES OF LAND MORE OR LESS.

DESCRIPTION: (BY SURVEYOR)  
CONSERVATION EASEMENT NO. 4, THE WILLOWS  
A PARCEL OF LAND LYING IN SECTION 10, TOWNSHIP 27 SOUTH, RANGE 36  
EAST, BREVARD COUNTY, FLORIDA, BEING MORE PARTICULARLY DESCRIBED  
AS FOLLOWS:  
COMMENCE AT THE NORTHEAST CORNER OF SAID SECTION 10, AND RUN S.  
89°10'51" W. ALONG THE NORTH LINE OF SAID SECTION 10, A DISTANCE  
OF 362.84 FEET; THENCE S. 02°49'40" W. A DISTANCE OF 1233.37 FEET  
TO THE POINT-OF-BEGINNING OF THE HEREIN DESCRIBED  
CONSERVATION EASEMENT; THENCE CONTINUE FOR THE FOLLOWING 11 CALLS  
S. 89°23'04" E. - 81.50 FEET; S. 40°20'11" E. - 46.48 FEET; S.  
S. 40°27'11" E. - 73.19 FEET; S. 50°28'51" E. - 30.76 FEET; S.  
24°50'51" E. - 78.10 FEET; S. 07°18'00" W. - 47.08 FEET; S.  
48°39'11" W. - 50.84 FEET; S. 87°44'15" W. - 56.07 FEET; S.  
87°15'00" W. - 81.83 FEET; N. 78°18'57" E. - 72.71 FEET; N.  
75°17'37" W. - 55.29 FEET; N. 48°44'11" E. - 78.13 FEET; N.  
03°07'11" E. - 89.27 FEET; N. 2°47'51" E. - 106.78 FEET; N.  
25°01'00" E. - 40.32 FEET; N. 82°50'11" E. - 106.44 FEET; N.  
TO THE POINT-OF-BEGINNING, CONTAINING 1.0 ACRES OF LAND MORE OR LESS.

DESCRIPTION: (BY SURVEYOR)  
CONSERVATION EASEMENT NO. 5, THE WILLOWS  
A PARCEL OF LAND LYING IN SECTION 9, TOWNSHIP 27 SOUTH, RANGE 36  
EAST, BREVARD COUNTY, FLORIDA, BEING MORE PARTICULARLY DESCRIBED  
AS FOLLOWS:  
COMMENCE AT THE NORTHEAST CORNER OF SAID SECTION 9, AND RUN N.  
89°10'51" W. ALONG THE NORTH LINE OF SAID SECTION 9, A DISTANCE  
OF 1181.19 FEET; THENCE S. 02°49'40" W. A DISTANCE OF 1244.48  
FEET TO THE POINT-OF-BEGINNING OF THE HEREIN DESCRIBED  
CONSERVATION EASEMENT; THENCE CONTINUE FOR THE FOLLOWING 11 CALLS  
S. 89°23'04" E. - 81.50 FEET; S. 40°20'11" E. - 46.48 FEET; S.  
S. 40°27'11" E. - 73.19 FEET; S. 50°28'51" E. - 30.76 FEET; S.  
24°50'51" E. - 78.10 FEET; S. 07°18'00" W. - 47.08 FEET; S.  
48°39'11" W. - 50.84 FEET; S. 87°44'15" W. - 56.07 FEET; S.  
87°15'00" W. - 81.83 FEET; N. 78°18'57" E. - 72.71 FEET; N.  
75°17'37" W. - 55.29 FEET; N. 48°44'11" E. - 78.13 FEET; N.  
03°07'11" E. - 89.27 FEET; N. 2°47'51" E. - 106.78 FEET; N.  
25°01'00" E. - 40.32 FEET; N. 82°50'11" E. - 106.44 FEET; N.  
TO THE POINT-OF-BEGINNING, CONTAINING 0.3 ACRES OF LAND MORE OR LESS.

DESCRIPTION: (BY SURVEYOR)  
CONSERVATION EASEMENT NO. 6, THE WILLOWS  
A PARCEL OF LAND LYING IN SECTION 9, TOWNSHIP 27 SOUTH, RANGE 36  
EAST, BREVARD COUNTY, FLORIDA, BEING MORE PARTICULARLY DESCRIBED  
AS FOLLOWS:  
COMMENCE AT THE NORTHEAST CORNER OF SAID SECTION 9, AND RUN N.  
89°10'51" W. ALONG THE NORTH LINE OF SAID SECTION 9, A DISTANCE  
OF 1096.17 FEET; THENCE S. 02°49'40" W. A DISTANCE OF 1244.48  
FEET TO THE POINT-OF-BEGINNING OF THE HEREIN DESCRIBED  
CONSERVATION EASEMENT; THENCE CONTINUE FOR THE FOLLOWING 11 CALLS  
S. 89°23'04" E. - 81.50 FEET; S. 40°20'11" E. - 46.48 FEET; S.  
S. 40°27'11" E. - 73.19 FEET; S. 50°28'51" E. - 30.76 FEET; S.  
24°50'51" E. - 78.10 FEET; S. 07°18'00" W. - 47.08 FEET; S.  
48°39'11" W. - 50.84 FEET; S. 87°44'15" W. - 56.07 FEET; S.  
87°15'00" W. - 81.83 FEET; N. 78°18'57" E. - 72.71 FEET; N.  
75°17'37" W. - 55.29 FEET; N. 48°44'11" E. - 78.13 FEET; N.  
03°07'11" E. - 89.27 FEET; N. 2°47'51" E. - 106.78 FEET; N.  
25°01'00" E. - 40.32 FEET; N. 82°50'11" E. - 106.44 FEET; N.  
TO THE POINT-OF-BEGINNING, CONTAINING 12.8 ACRES OF LAND MORE OR LESS.

DESCRIPTION: (BY SURVEYOR)  
CONSERVATION EASEMENT NO. 7, THE WILLOWS  
A PARCEL OF LAND LYING IN SECTION 9, TOWNSHIP 27 SOUTH, RANGE 36  
EAST, BREVARD COUNTY, FLORIDA, BEING MORE PARTICULARLY DESCRIBED  
AS FOLLOWS:  
COMMENCE AT THE NORTHEAST CORNER OF SAID SECTION 9, AND RUN N.  
89°10'51" W. ALONG THE NORTH LINE OF SAID SECTION 9, A DISTANCE  
OF 3082.20 FEET; THENCE S. 02°11'23" E. A DISTANCE OF 1286.37  
FEET TO THE POINT-OF-BEGINNING OF THE HEREIN DESCRIBED  
CONSERVATION EASEMENT; THENCE CONTINUE FOR THE FOLLOWING 11 CALLS  
S. 89°23'04" E. - 81.50 FEET; S. 40°20'11" E. - 46.48 FEET; S.  
S. 40°27'11" E. - 73.19 FEET; S. 50°28'51" E. - 30.76 FEET; S.  
24°50'51" E. - 78.10 FEET; S. 07°18'00" W. - 47.08 FEET; S.  
48°39'11" W. - 50.84 FEET; S. 87°44'15" W. - 56.07 FEET; S.  
87°15'00" W. - 81.83 FEET; N. 78°18'57" E. - 72.71 FEET; N.  
75°17'37" W. - 55.29 FEET; N. 48°44'11" E. - 78.13 FEET; N.  
03°07'11" E. - 89.27 FEET; N. 2°47'51" E. - 106.78 FEET; N.  
25°01'00" E. - 40.32 FEET; N. 82°50'11" E. - 106.44 FEET; N.  
TO THE POINT-OF-BEGINNING, CONTAINING 10.8 ACRES OF LAND MORE OR LESS.

DESCRIPTION: (BY SURVEYOR)  
CONSERVATION EASEMENT NO. 8, THE WILLOWS  
A PARCEL OF LAND LYING IN SECTION 9, TOWNSHIP 27 SOUTH, RANGE 36  
EAST, BREVARD COUNTY, FLORIDA, BEING MORE PARTICULARLY DESCRIBED  
AS FOLLOWS:  
COMMENCE AT THE NORTHEAST CORNER OF SAID SECTION 9, AND RUN N.  
89°10'51" W. ALONG THE NORTH LINE OF SAID SECTION 9, A DISTANCE  
OF 1181.19 FEET; THENCE S. 02°49'40" W. A DISTANCE OF 1244.48  
FEET TO THE POINT-OF-BEGINNING OF THE HEREIN DESCRIBED  
CONSERVATION EASEMENT; THENCE CONTINUE FOR THE FOLLOWING 11 CALLS  
S. 89°23'04" E. - 81.50 FEET; S. 40°20'11" E. - 46.48 FEET; S.  
S. 40°27'11" E. - 73.19 FEET; S. 50°28'51" E. - 30.76 FEET; S.  
24°50'51" E. - 78.10 FEET; S. 07°18'00" W. - 47.08 FEET; S.  
48°39'11" W. - 50.84 FEET; S. 87°44'15" W. - 56.07 FEET; S.  
87°15'00" W. - 81.83 FEET; N. 78°18'57" E. - 72.71 FEET; N.  
75°17'37" W. - 55.29 FEET; N. 48°44'11" E. - 78.13 FEET; N.  
03°07'11" E. - 89.27 FEET; N. 2°47'51" E. - 106.78 FEET; N.  
25°01'00" E. - 40.32 FEET; N. 82°50'11" E. - 106.44 FEET; N.  
TO THE POINT-OF-BEGINNING, CONTAINING 10.8 ACRES OF LAND MORE OR LESS.

LINE	BEARING	DISTANCE
1	S 73°00'00" E	53.00'
2	S 29°46'30" E	46.14'
3	S 02°17'30" W	45.59'
4	S 10°29'45" W	61.84'
5	S 24°13'00" W	63.26'
6	S 01°03'37" E	69.75'
7	S 37°58'02" E	42.71'
8	S 12°07'02" E	101.46'
9	S 43°40'00" W	48.23'
10	S 59°15'40" W	59.27'
11	S 70°12'00" W	54.89'
12	N 82°43'44" W	77.29'
13	N 14°08'14" W	67.88'
14	N 30°22'32" E	50.12'
15	N 33°54'42" E	56.28'
16	N 01°51'50" W	89.68'
17	N 38°55'21" W	66.55'
18	N 03°34'14" E	52.25'
19	N 09°22'31" E	45.71'
20	N 49°43'02" E	45.71'
21	N 72°41'13" E	42.71'
22	N 82°18'42" E	30.82'
23	N 78°29'32" E	64.71'
24	S 66°28'02" E	63.62'
25	N 89°28'10" E	24.08'
26	S 69°29'02" E	53.11'
27	S 82°47'48" E	35.31'
28	S 34°59'15" E	23.51'
29	S 16°26'41" E	43.44'
30	S 07°16'15" E	2.88'
31	S 43°12'10" W	51.25'
32	S 75°03'00" W	31.64'
33	S 45°58'27" W	10.96'
34	S 75°20'30" W	34.61'
35	N 60°07'45" W	34.54'
36	N 81°11'11" W	27.08'
37	S 82°29'40" W	38.05'
38	S 89°58'10" W	32.49'
39	S 74°39'20" W	49.65'
40	N 66°12'54" W	50.54'
41	N 68°00'07" W	37.37'
42	N 43°37'17" W	33.16'
43	N 70°27'37" W	41.18'
44	N 31°47'49" W	24.31'
45	N 08°42'41" E	30.64'
46	N 40°05'51" E	30.64'
47	N 83°08'30" E	49.11'
48	N 82°24'17" E	55.91'
49	S 07°20'00" E	61.50'
50	S 48°25'17" E	64.82'
51	S 07°20'00" E	61.50'
52	S 07°26'51" E	50.76'
53	S 14°02'00" E	78.70'
54	S 07°20'00" E	49.88'
55	S 46°39'10" E	50.64'
56	S 67°44'15" E	56.07'
57	S 87°15'00" E	81.83'
58	N 78°18'57" E	72.71'
59	N 75°17'37" W	55.29'
60	N 68°44'11" E	59.78'
61	N 07°07'30" E	59.27'
62	N 07°18'00" W	47.08'
63	N 28°10'41" E	49.32'
64	N 66°02'51" E	49.88'
65	S 05°55'41" E	51.37'
66	N 85°43'19" E	79.89'
67	S 07°20'00" E	61.50'
68	S 47°22'43" E	87.16'
69	S 22°58'14" E	65.00'
70	S 12°18'44" W	62.08'
71	S 62°00'30" W	37.85'
72	S 34°16'57" W	67.57'
73	S 60°31'50" W	68.78'
74	S 48°29'40" W	39.60'
75	S 60°05'50" W	45.89'
76	N 72°29'45" W	46.98'
77	N 05°24'19" E	44.18'
78	N 05°24'19" E	53.54'
79	S 07°37'31" E	46.18'
80	S 40°27'30" W	41.76'
81	S 40°27'11" E	73.19'
82	N 74°25'00" W	78.98'
83	N 59°19'44" W	59.24'
84	N 88°00'51" W	31.08'
85	N 34°06'49" W	43.97'
86	N 21°47'01" W	56.82'
87	N 23°09'55" W	57.27'
88	N 30°47'55" E	52.58'
89	N 30°47'55" E	52.58'
90	N 47°11'57" E	95.98'
91	N 47°11'57" E	67.02'
92	N 79°59'18" E	37.20'
93	N 79°59'18" E	33.03'
94	S 78°32'08" E	66.08'
95	N 78°32'08" E	66.08'
96	N 11°49'00" W	29.59'
97	N 11°49'00" W	29.59'
98	S 29°51'52" E	33.03'
99	N 07°15'00" W	77.03'
100	N 88°43'10" W	86.93'
101	N 13°15'24" W	33.84'
102	N 33°05'44" W	24.15'
103	N 34°30'40" W	39.69'
104	N 82°43'14" E	28.11'