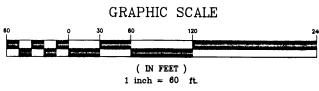
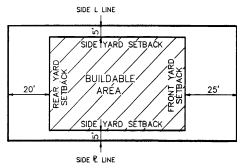


VIERA SOUTH P.U.D. - TRACTS "MM" AND "QQ" PHASES FOUR - FIVE - SIX SECTION 10 - TOWNSHIP 26 SOUTH - RANGE 36 EAST BREVARD COUNTY, FLORIDA



NOT PLATTED

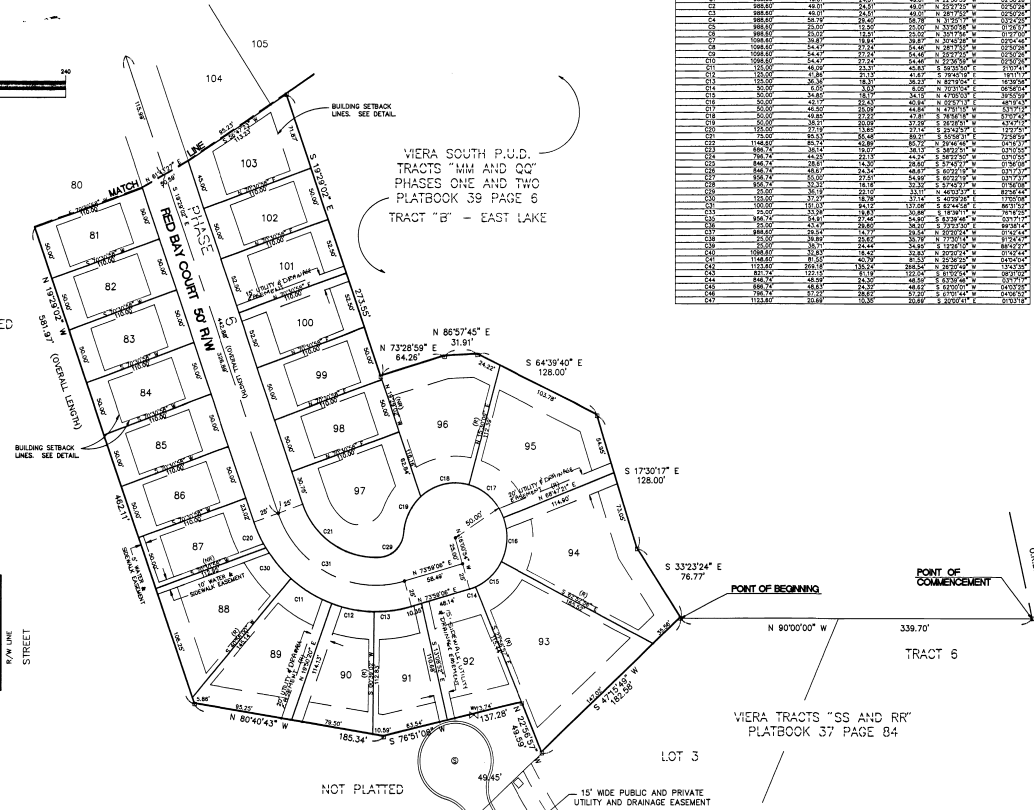


THE EXCEPTION TO THE ABOVE DETAIL IS THE SIDEYARD UTILITY AND/OR SIDEWALK EASEMENTS, AS SHOWN ON LOTS 86 & 87, 81 & 82 AND 100 & 101. THE MINIMUM SIDEYARD SETBACK OF 7.5 FEET ON THE EASEMENT SIDE OF THE LOT. LOTS 88 & 89 AND 94 & 95 WILL HAVE A MINIMUM SIDEYARD SETBACK OF 10 FEET ON THE EASEMENT SIDE OF THE LOT.

GENERAL NOTES:

- 1. DRAINAGE AND UTILITY EASEMENTS, UNLESS OTHERWISE NOTED, FOR EACH LOT SHOWN HEREON ARE AS FOLLOWS: REAR LOT LINE: 5.00 FT.; SIDE LOT LINE: 5.00 FT., AND A 10 FT. FRONT UTILITY EASEMENT ALONG ALL PUBLIC ROAD RIGHT-OF-WAYS.
2. THE UTILITY EASEMENTS AS SHOWN OR DESCRIBED HEREON MAY ALSO BE UTILIZED FOR THE CONSTRUCTION, INSTALLATION, MAINTENANCE, AND OPERATION OF CABLE SERVICES AS PROVIDED BY SECTION 177.001, SUBSECTION (20), FLORIDA STATUTES.
3. FOR DECLARATION OF COVENANTS AND RESTRICTIONS SEE OFFICIAL RECORDS BOOK 3889 PAGES 2453 THRU 2623 OF THE PUBLIC RECORDS OF BREVARD COUNTY, FLORIDA FOR COMMUNITY DECLARATION OF COVENANTS AND RESTRICTIONS SEE OFFICIAL RECORDS BOOK 3889 PAGES 2624 THRU 2625 OF THE PUBLIC RECORDS OF BREVARD COUNTY, FLORIDA.
4. O INDICATES PERMANENT CONTROL POINT SET STAMPED "P.C.P. - P.L.S. 3818"
5. I INDICATES PERMANENT REFERENCE MONUMENT SET STAMPED "P.R.M. - P.L.S. 3818"
6. N INDICATES PERMANENT REFERENCE MONUMENT FOUND STRIPED L.B. 4444
7. N INDICATES "N" SHOWS THE BEARING ALONG THE NORTHWEST PLATTED LINE AS DERIVED ON THE PLAT OF VIERA TRACT "SS" & "TT", PER PLAT BOOK 37, PAGE 84 OF THE PUBLIC RECORDS OF BREVARD COUNTY, FLORIDA. ALL OTHER BEARINGS SHOWN RELATE TO THE BEARING STRUCTURE NOTE ABOVE.
8. NOTICE: THE TERM "PUBLIC UTILITIES" INCLUDES FLORIDA POWER & LIGHT, SOUTHERN BELL AND CABLE TELEVISION SERVICES.
9. LOTS ABUTTING TRACT "R", RECORDED IN PLATBOOK 38 PAGE 6, PUBLIC RECORDS OF BREVARD COUNTY, FL., SHALL NOT HAVE REPARIAN RIGHTS WITH RESPECT TO TRACT "R". THESE RIGHTS SHALL BE MAINTAINED BY THE VIERA COMPANY, AND THE SUCCESSORS AND/OR ASSIGNS (WHICH MAY INCLUDE AN OWNERS ASSOCIATION OR THE VIERA EAST COMMUNITY DEVELOPMENT DISTRICT).
ABBREVIATIONS:
Δ = CENTRAL ANGLE OF CURVE (DELTA) R = RADIUS OF CURVE L = TANGENT LENGTH OF CURVE I = ARC LENGTH OF CURVE (I) = RADIAL LINE (H) = NON RADIAL LINE (RB) = RADIAL BEARINGS N.C.S. = NATIONAL GEODETIC SURVEY N.A.D. = NORTH AMERICAN DATUM FT. = FEET OR FOOT

NOTE: THERE MAY BE ADDITIONAL RESTRICTIONS THAT ARE NOT RECORDED ON THIS PLAT THAT MAY BE FOUND IN THE PUBLIC RECORDS OF THIS COUNTY.



VIERA SOUTH P.U.D. TRACTS "MM AND QQ" PHASES ONE AND TWO PLATBOOK 39 PAGE 6 TRACT "B" - EAST LAKE

VIERA TRACTS "SS AND RR" PLATBOOK 37 PAGE 84

Table with columns: CURVE, BEARING, LENGTH, ANGLE, GROUP, BEARING, DELTA. Contains curve data for various lots.

THIS PLAT WAS PREPARED BY: MASTELLER, MOLER AND REED INC. PROFESSIONAL LAND SURVEYORS 1623 NORTH U.S. HIGHWAY NO. 1, SEBASTIAN FLORIDA 32958 (407) 589-4810

DEDICATION KNOW ALL MEN BY THESE PRESENTS that the Corporation named below, being the owner in fee simple of the lands described in VIERA SOUTH P.U.D. - TRACTS "MM" AND "QQ" PHASES FOUR, FIVE - SIX, hereby dedicates said lands and plat for the uses and purposes therein expressed and dedicates all roads, streets, alleys, thoroughfares, parks, canals, drainage easements, utility easements, lakes, pathways, open spaces and other rights of way, easements shown hereon to the perpetual use of the public, and IN WITNESS WHEREOF, has caused these presents to be signed and attested to by the officers named below and its corporate seal to be affixed hereon. By THE VIERA COMPANY, Betty A. DeSelle, VICE President, Attest: Dawn, ASSISTANT SECRETARY, Signed and sealed in the presence of Betty A. DeSelle, May Ellen McHobbs

STATE OF FLORIDA COUNTY OF BREVARD THIS IS TO CERTIFY that on DECEMBER 9, 1993 before me, an officer duly qualified to take acknowledgments in the State and County aforesaid, personally appeared PERRY S. READER and KATHLEEN LEAKE respectively, VICE President and ASSISTANT SECRETARY of the above named corporation incorporated under the laws of the State of FLORIDA, to me known to be the individuals and officers described in and who executed the foregoing Dedication and severally acknowledged the execution thereof to be their free act and deed as such officers thereunto duly authorized that the official seal of said corporation is duly affixed thereto; and that the said Dedication is the act and deed of said corporation. IN WITNESS WHEREOF, I have hereto set my hand and seal on the above date. Betty A. DeSelle, NOTARY PUBLIC, My Commission Expires...

CERTIFICATE OF SURVEYOR KNOW ALL MEN BY THESE PRESENTS, that the undersigned, being a licensed and registered land surveyor, does hereby certify that on NOVEMBER 23, 1993 he completed the survey of the lands as shown in the foregoing plat; that said plat is a correct representation of the lands therein described and platted; that permanent reference monuments have been placed as shown, inasmuch as required by Chapters 177 & 472 Florida Statutes; and that said land is located in Brevard County, Florida. Dated: 12-9-93 Registration No. 4996

CERTIFICATE OF APPROVAL BY MUNICIPALITY THIS IS TO CERTIFY, That on... the... approved the foregoing plat. ATTEST: MAYOR, CITY CLERK.

CERTIFICATE OF ACCEPTANCE OF DEDICATION BY BOARD OF COUNTY COMMISSIONERS THIS IS TO CERTIFY That the Board of County Commissioners hereby accept all roads, streets, alleys, thoroughfares, parks, canals, drainage easements, utility easements, lakes, pathways, open spaces and other rights-of-way, easements and areas dedicated for public use on this plat. ATTEST: Chairman of the Board, Clerk of the Board.

CERTIFICATE OF APPROVAL BY BOARD OF COUNTY COMMISSIONERS THIS IS TO CERTIFY, That on 12-7-93 the foregoing plat was approved by the Board of County Commissioners of Brevard County, Florida. ATTEST: Chairman of the Board, Clerk of the Board, Approved, County Engineer.

CERTIFICATE OF APPROVAL BY PLANNING AND ZONING COMMISSION THIS IS TO CERTIFY, That on 12-6-93 the Zoning Commission of the above County approved the foregoing plat. ATTEST: Planning and Zoning Director.

CERTIFICATE OF CLERK I HEREBY CERTIFY that I have examined the foregoing plat and find that it complies in form with all the requirements of Chapter 177, Florida Statutes, and was filed for record on... File No. Clerk of the Circuit Court in and for Brevard County, Fla.